

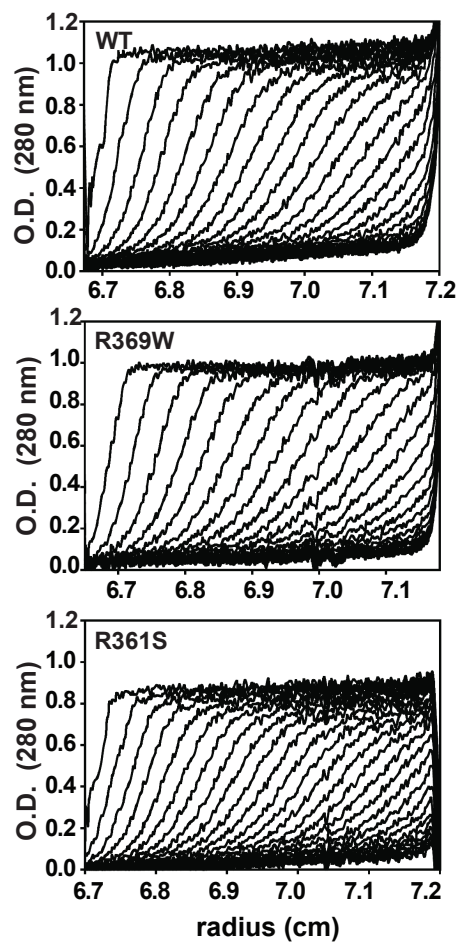
## SUPPLEMENTAL FIGURE LEGENDS

**Figure S1:** Sedimentation velocity analysis of the wild-type dynamin 2 and the R369W and R361S mutants. Dynamins (18  $\mu\text{M}$ ) were centrifuged at 35,000 rpm in a Beckman XL-A analytical ultracentrifuge. The panels show scores (Abs 280 nm) taken at 4 min intervals. Samples were in buffer containing 200 mM NaCl.

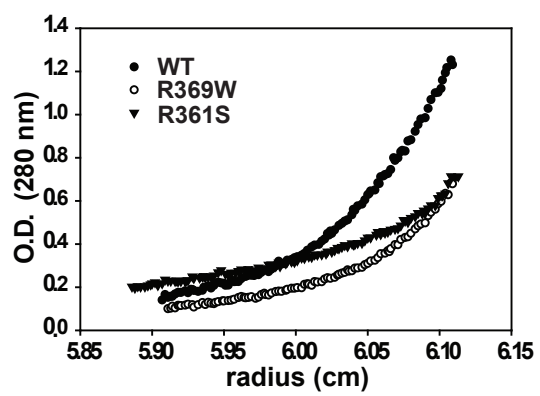
**Figure S2:** Sedimentation equilibrium analysis of wild-type dynamin 2 and the R369W and R361S mutants. Dynamin wild-type (7.5  $\mu\text{M}$ ), R369W (5  $\mu\text{M}$ ) and R361S (5  $\mu\text{M}$ ) were centrifuged at 7,000 rpm in a Beckman XL-A analytical ultracentrifuge until equilibrium was achieved. Samples were in buffer containing 200 mM NaCl.

**Figure S3:** GTPase activities of WT and CNM-associated dynamin 2 mutants assayed at 0.05 and 0.5  $\mu\text{M}$  dynamin concentrations. Data represent multiple measurements of three preparations of WT, R369W, R465W, and two preparations of A618T and E368K. Significance relative to WT at corresponding concentration: \*,  $p < 0.05$ , \*\*,  $p < 0.01$ , \*\*\*,  $p < 0.001$ . ns, not significant.

### Supplemental Figure S1



Supplemental Figure S2



Supplemental Figure S3

