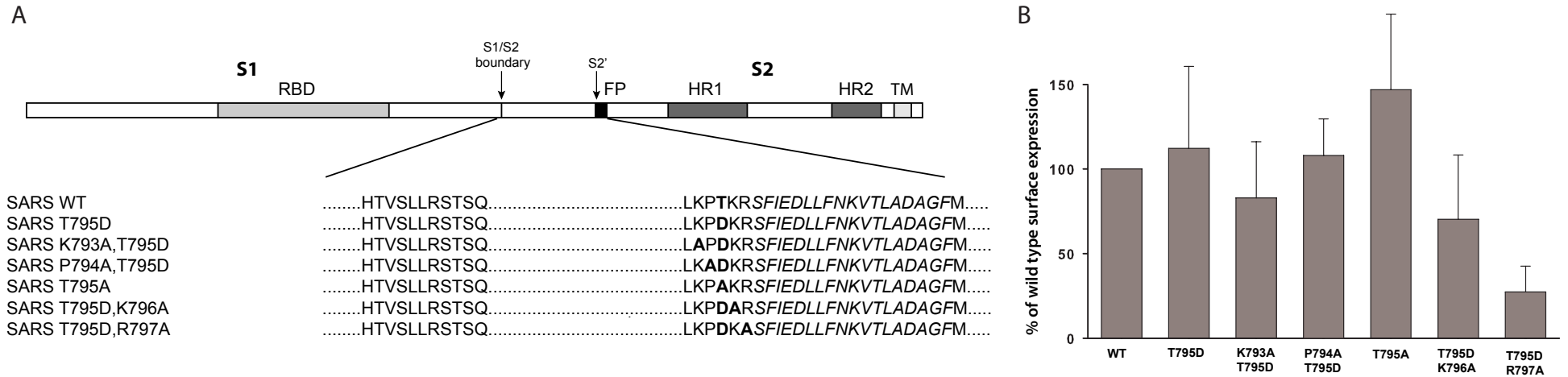


Supplemental Figure 2



Effect of mutation on spike protein surface expression with a cartoon of spike and mutant map. A) Cartoon representation of the SARS-CoV spike showing the receptor-binding domain (RBD) in S1, the fusion peptide (FP), heptad repeats 1 and 2 (HR1 and HR2) and the transmembrane domain (TM) in S2. As indicated in the mutant map, different mutations were made around S2' region. B) HEK293T cells were transfected with plasmids encoding wild type SARS-CoV S or mutants and ACE2. The cells were labeled with sulfo-NHS-SS-biotin and lysed. Lysates were affinity purified with NeutraAvidin beads and resolved by SDS-PAGE and Western blot using anti S monoclonal antibody directed against a C9 tag. The biotinylation assay was repeated three times and the results from the Western blots were quantified using IP lab software and plotted in Sigma Plot 9.0. Error bars represent standard deviation of the mean.