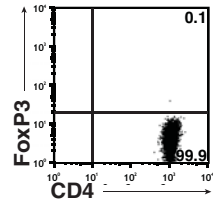


Supplemental Figure 1: Foxp3 expression of naïve cells prior to transfer in vivo. Naïve CD4⁺ T cells from DO11.10 Yeti mice (CD4⁺CD25⁻KJ126⁺YFP⁻) were sorted and stained to show Foxp3 expression prior to transfer into sOVARag^{-/-} recipient mice.

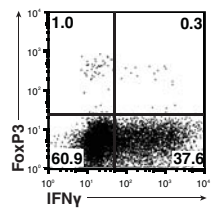
Supplemental Figure 2: Foxp3 and IFN γ expression in DO11.10 cells at day 10 post transfer. Lymph nodes of sOVARag^{-/-} mice were harvested at day 10 post transfer of naïve DO11.10 T cells. Cells were re-stimulated overnight and stained for Foxp3 and IFN γ expression.

Supplemental Figure 3: Foxp3 expression of WT and IFN γ ^{-/-} cells prior to transfer in vivo. Naïve CD4⁺ T cells from WT or IFN γ ^{-/-} DO11.10 mice (CD4⁺CD25⁻KJ126⁺) and in vitro activated WT or IFN γ ^{-/-} CD4⁺ T cells (CD4⁺CD25⁺KJ126⁺) were sorted and stained to show Foxp3 expression prior to transfer into sOVARag^{-/-} recipient mice.

Supplemental Fig 1.



Supplimental Fig 2



Supplemental Fig 3

