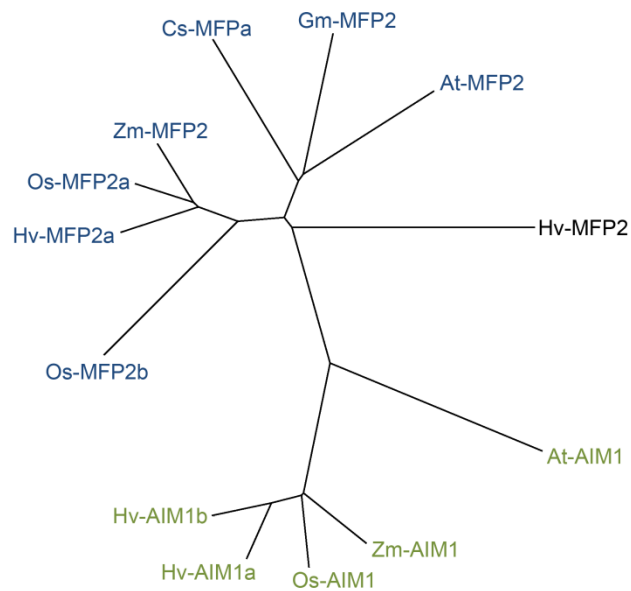


Sequence identities between plant MFPs identified in GenBank												
	ZmMFP2	GmMFP2	OsMFP2b	AtMFP2	CsMFPa	HvMFP2a	OsMFP2a	AtAIM1	ZmAIM1	OsAIM1	HvAIM1a	HvAIM1b
HvMFP2b	68%	66%	64%	64%	64%	67%	68%	54%	54%	54%	53%	53%
ZmMFP2		75%	77%	72%	72%	88%	90%	55%	58%	59%	57%	56%
GmMFP2			66%	77%	74%	73%	75%	56%	57%	57%	55%	55%
OsMFP2b				66%	66%	76%	78%	54%	55%	55%	53%	54%
AtMFP2					75%	73%	74%	57%	56%	56%	55%	55%
CsMFPa						71%	72%	56%	57%	58%	57%	57%
HvMFP2a							89%	56%	57%	58%	56%	56%
OsMFP2a								55%	57%	59%	56%	56%
AtAIM1									67%	66%	65%	66%
ZmAIM1										88%	87%	86%
OsAIM1											88%	86%
HvAIM1a												90%



Supplemental Figure S2. MFP subfamilies among peroxisomal plant proteins.

A, Sequences identities among plant MFPs identified in GenBank. The included sequences are: *AtMFP2* (GenBank GI:145338207), *AtAIM1* (GI:75315624), *CsMFPa* (*Cucumis sativa*, GI:34922495), *HvMFP2b* (*Hordeum vulgare*, GI:151418576), *HvMFP2a* (GI:151419725), *HvAIM1a* (GI:151420676), *HvAIM1b* (GI:151418867), *OsMFP2a* (*Oryza sativa*, GenBank GI:115436429), *OsMFP2b* (GI:115436429), *OsAIM1* (GI:115445512), *ZmMFP2* (*Zea mays*, GI:195654912), *ZmAIM1* (GI:195654913). B. Phylogenetic tree including the *AtAIM1*- and *AtMFP2*-like proteins from the table.