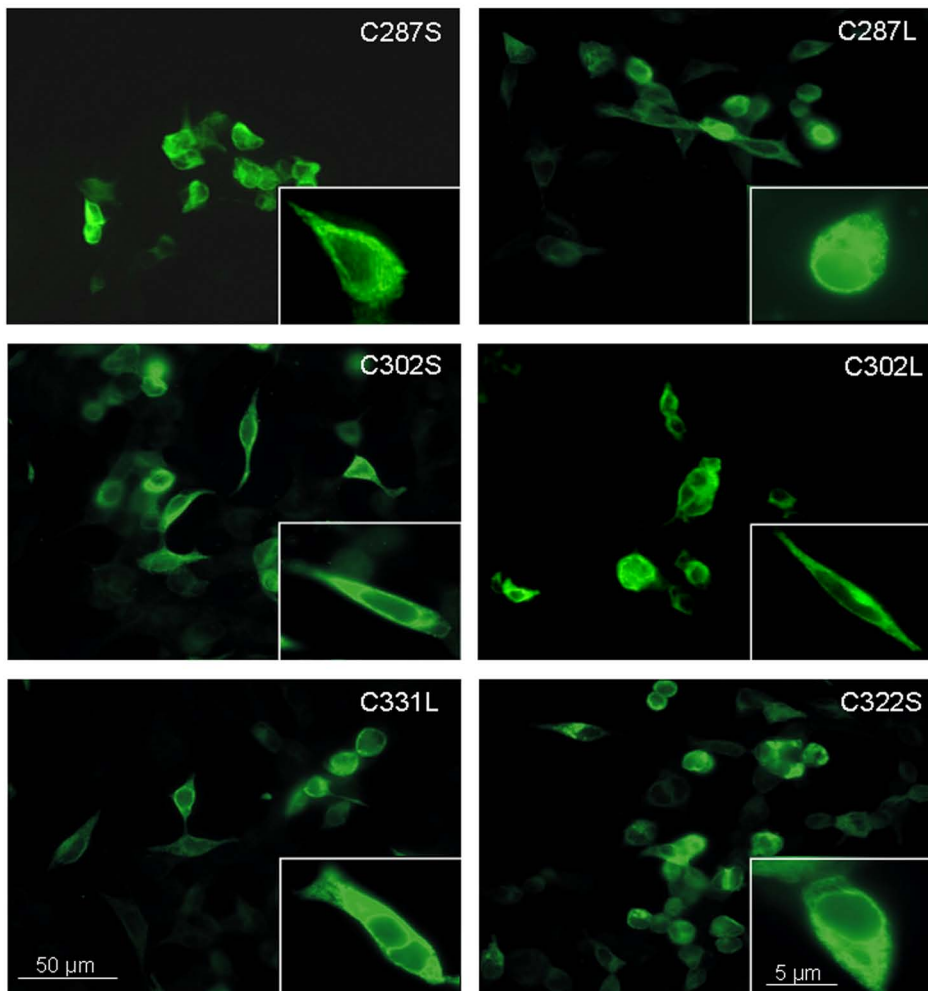


Suppl. Figure 1



Suppl. Fig. 1 Cysteine single mutations in the large extracellular loop of KCC2 are expressed in HEK-293 cells. HEK-293 cells were transfected with single cysteine mutants of the extracellular loop of KCC2. Immunocytochemical labeling revealed that all mutants are detected at the plasma membrane and the perinuclear region in pattern, indistinguishable from KCC2wt.