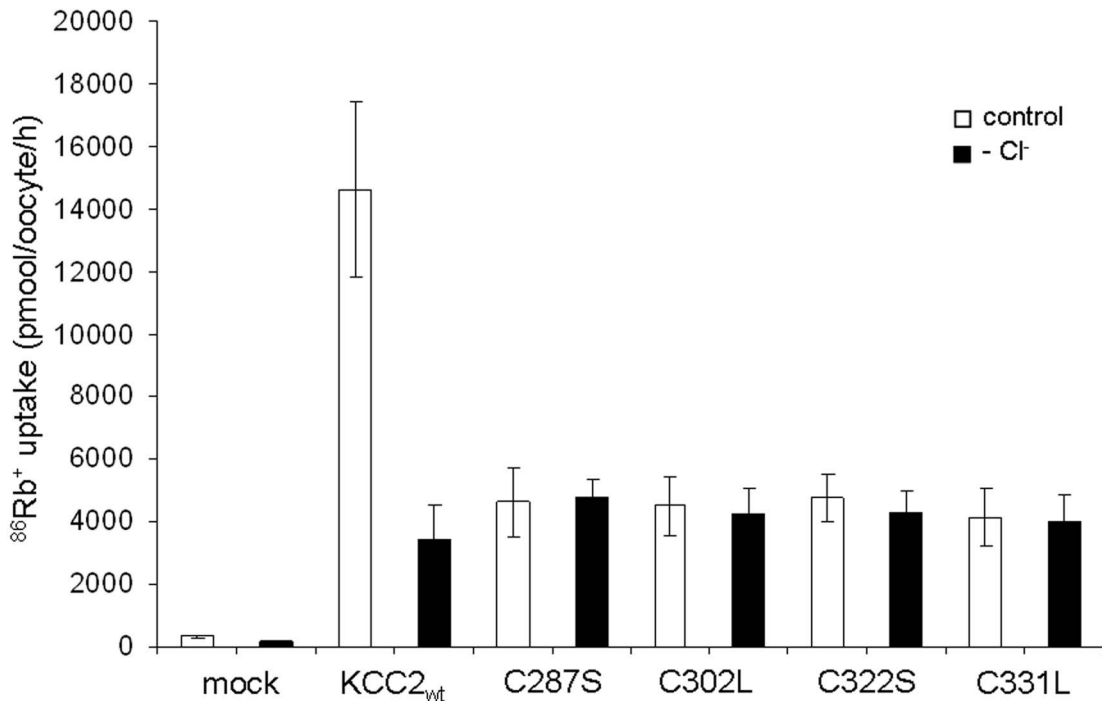


Suppl. Figure 3



Suppl. Fig. 3 Single cysteine mutations in KCC2 are transport inactive in *Xenopus laevis* oocytes.  $^{86}\text{Rb}^+$  uptake was determined for KCC2<sub>wt</sub> or single cysteine mutants in *Xenopus laevis* oocytes 48-72 h after injection. Expression of KCC2<sub>wt</sub> resulted in 25 times higher activity compared to mock transfected cells. None of the single cysteine mutants revealed Cl<sup>-</sup>-dependent  $^{86}\text{Rb}^+$  uptake. Plot depicts mean of three experiments  $\pm$  S.E.M.