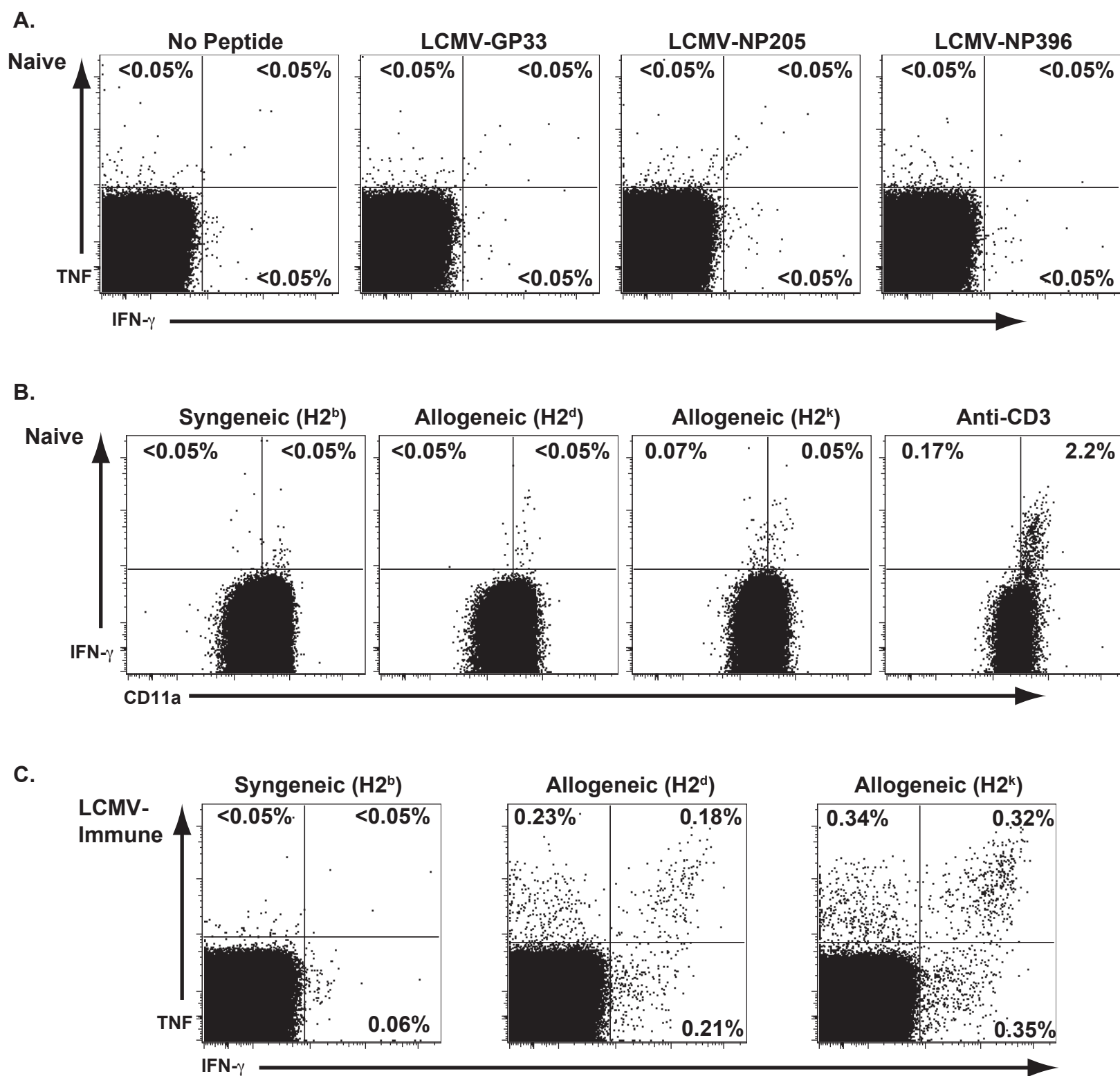


Supplemental Figure 1. Cytokine profiles of CD8 T cells from Naive and LCMV-immune Mice



Splenocytes from naïve B6 mice (A and B) or LCMV-immune B6 mice (C) or naïve B6 mice (C) were stimulated with peptides or with splenocytes (allogeneic, irradiated LPS-treated cells) that were either syngeneic ($H2^b$) or allogeneic (BALB/c, $H2^d$ or CBA, $H2^k$), as described in Materials and Methods. After culture, splenocytes were stained for cell surface markers and for intracellular IFN- γ and TNF. For analysis, samples were gated on CD8⁺ cells, and the values shown represent the percentage of CD8 T cells staining positive for either cytokine.