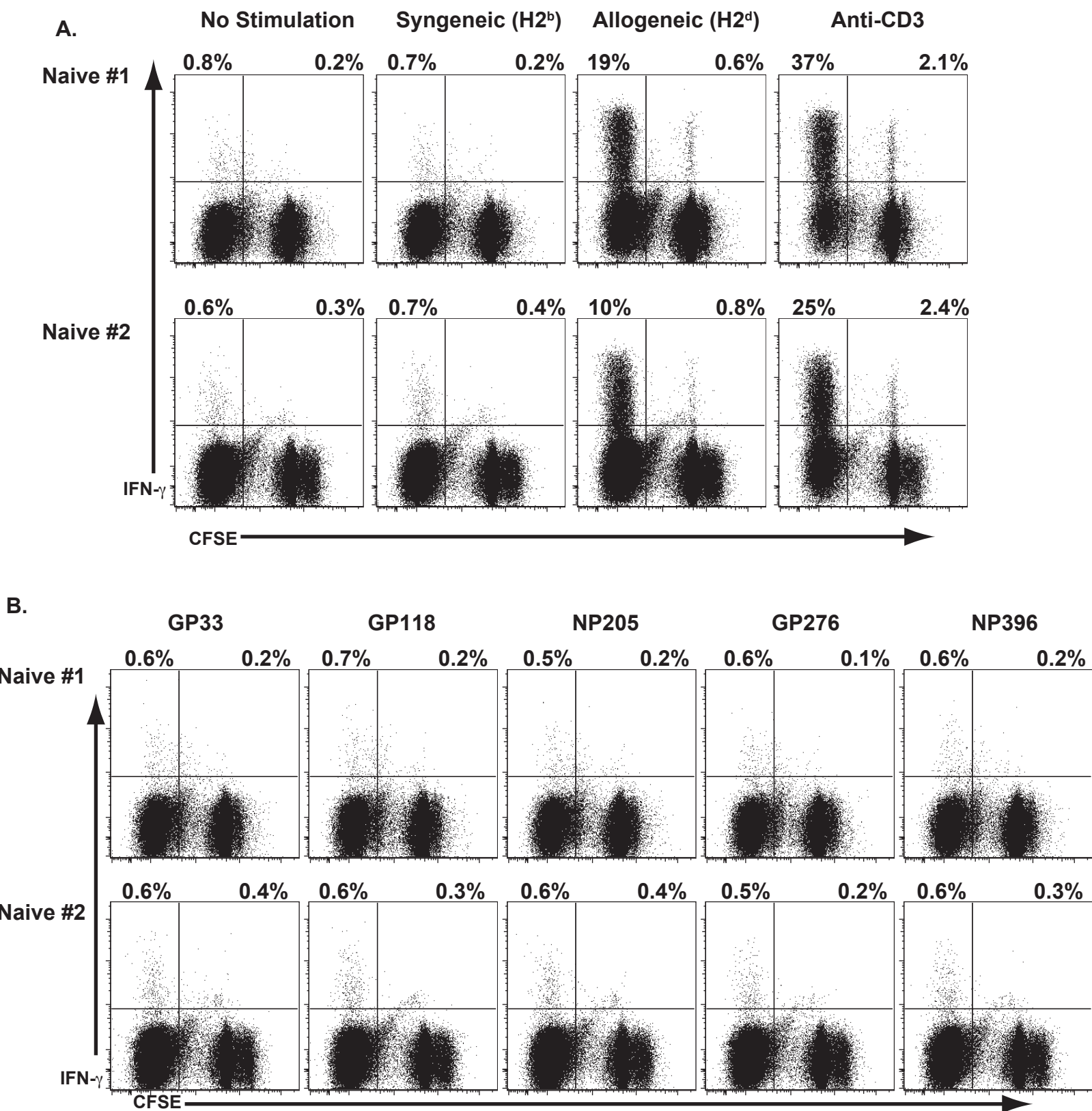


Supplemental Figure 2. CD8 T cells from Naive Mice Proliferate in Response to Alloantigens



CFSE-labeled splenocytes from naive B6 mice were cultured in vitro for 6 days with P815 cells ($H2^d$) as described in Materials and Methods. (A) Cultured cells were incubated with either syngeneic ($H2^b$) or allogeneic ($H2^d$) splenocytes or with a mAb specific for CD3 for 5 hr and then evaluated for the production of IFN- γ . (B) Alternatively, cultured cells were incubated with the indicated peptides for 5 hr and then evaluated for the production of IFN- γ . For the intracellular cytokine assays, samples were gated on CD8⁺ cells, and the values shown represent the percentage of either CFSE^{lo} or CFSE^{hi} CD8 T cells staining positive for IFN- γ .