

Suppl. Figure 1: Wild-type or *arf1-11* cells expressing Dhh1-GFP were shifted to 37°C for 1 h. While multiple foci were observed in *arf1-11*, only 0-2 PBs/cell were induced in wild-type cells.

Suppl. Figure 2: (A) *arf1-11* cells expressing Dcp2-GFP and deleted for *PUB1* were shifted to 37°C for 1 h. Multiple foci are still observed in this strain. (B) Wild-type cells expressing the SG marker eIF3B-GFP were shifted to 37°C for 1 h or to 46°C for 10 min. There was a marked induction of eIF3B-GFP containing granules after high heat shock. When cells were stressed by incubation in H₂O, rich medium containing 0.5 M NaCl, or medium lacking a carbon source (-D) for 15 min, no SG formation was observed with this marker.

Suppl. Figure 3: Calmodulin is lost from the small bud tip in *arf1-11* and after Ca²⁺ treatment. Wild-type or *arf1-11* cells expressing Cmd1-GFP were shifted to 37°C for 1 h or treated with 200 mM CaCl₂ for 15 min at 23°C. White arrowheads point towards small bud tips. The white bar represents 5 µm.

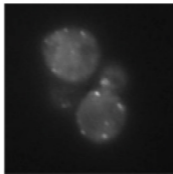
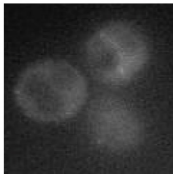
Suppl. Figure 4: The immuno-gold labeling is specific. Wild-type cells were prepared for thin section electron microscopy. Thin sections were labeled with myc-antibody and secondary antibodies coupled to gold. A few gold particles were observed scattered throughout the cell. The arrowheads point to individual gold particles. No gold clusters as in Figure 7C were observed. The bar in the images represent 500 nm.

Supplemental Figure 1, Kilchert et al.

Dhh1-GFP, 37°C

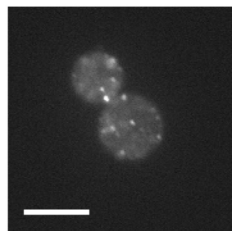
ARF1

arf1-11



A

arf1-11 Δpub1 Dcp2-GFP, 37°C



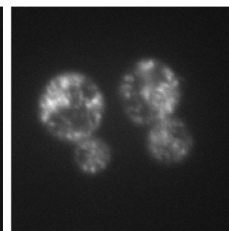
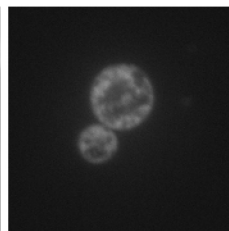
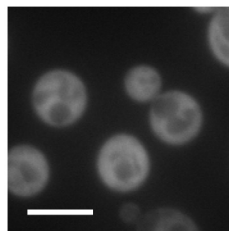
B

ARF1 eIF3B-GFP

23°C

37°C

46°C

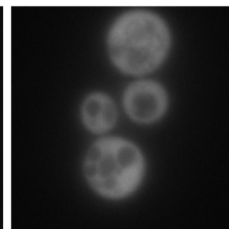
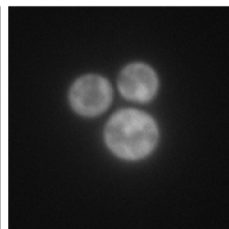
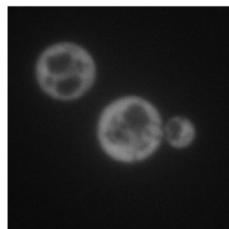


ARF1 eIF3B-GFP, 23°C

dH₂O

NaCl

-D



Supplemental Figure 3, Kilchert et al.

