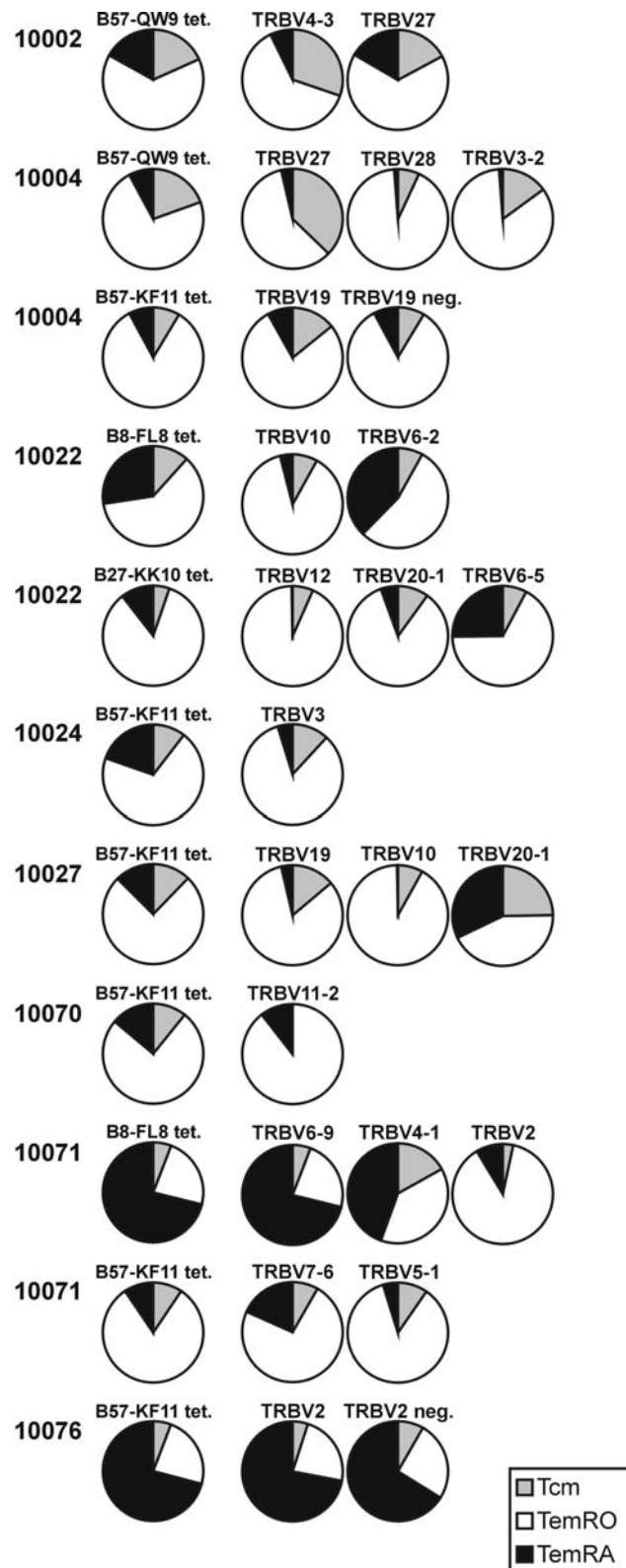
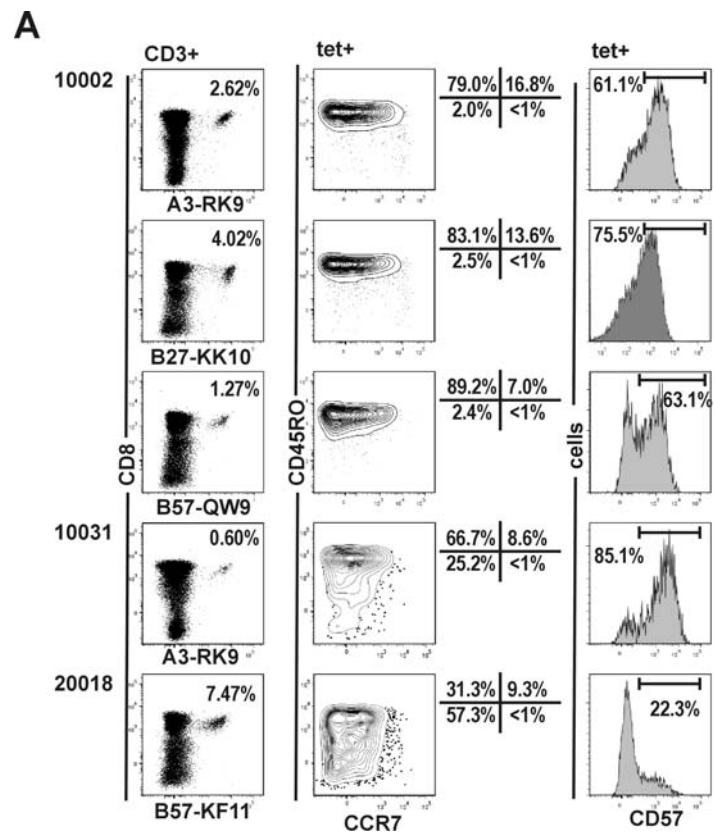


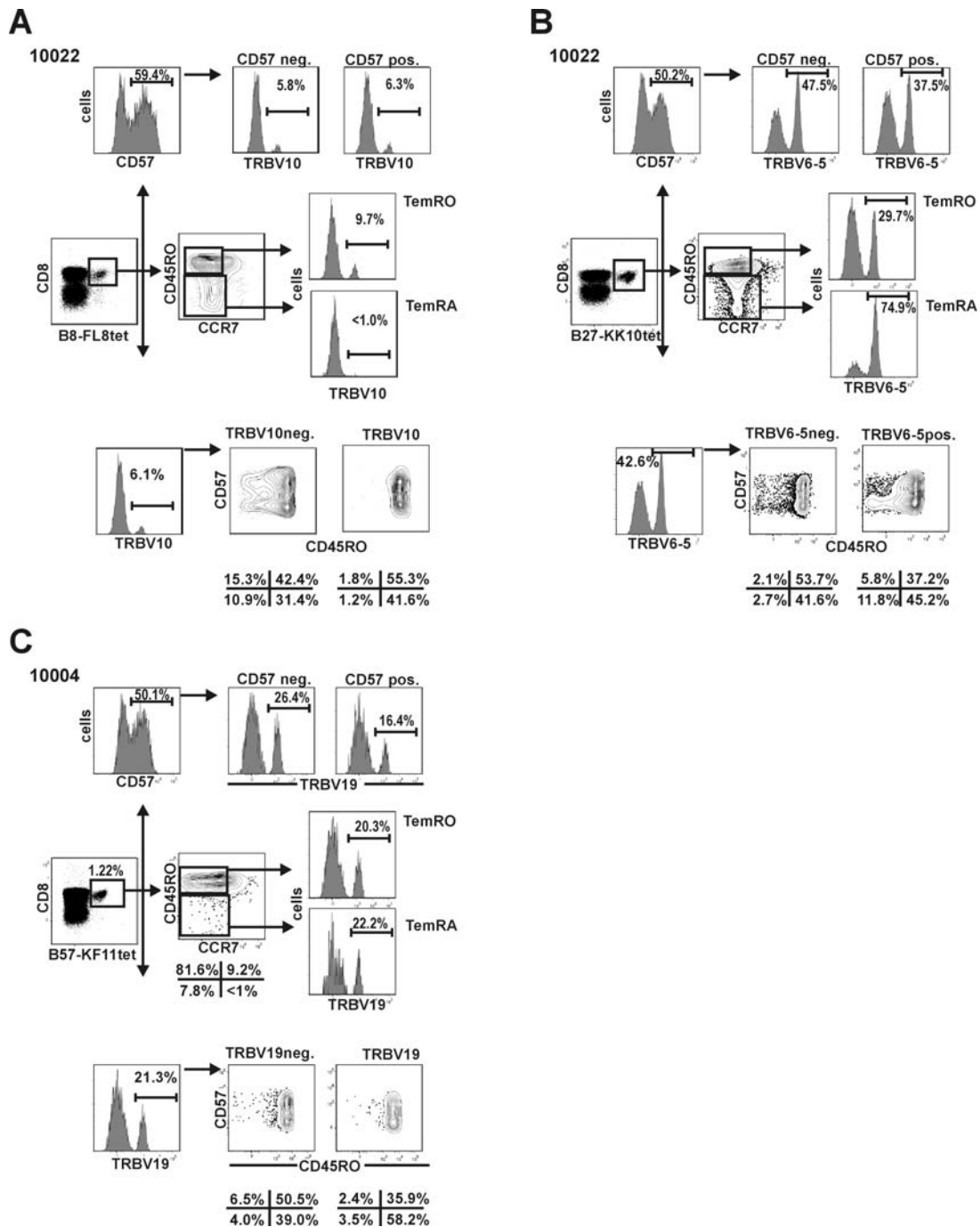
Supplemental figure 1: **A)** Analysis of the TRBV populations representing distinct clonotypes of B8-FL8 tetramer+ cells by flow cytometry in subject 10071. **B)** Co-staining of CD45RO and CD45RA on tetramer and TRBV-populations in subject 10071. **C&D)** Analysis of the frequency of TRBV-populations in CD45RO^{high}, CD45RO^{intermediate} and CD45RO^{neg} populations in subject 10071 (**C**) and 10022 (**D**).



Supplemental figure 2: Variability of the effector memory phenotype at the clonotype level within HIV-epitope-specific responses in different subjects. Pie charts indicate the frequency of TemRO- (white) and TemRA-(black) phenotype cells within total HIV-tetramer positive cells in different subject (first column) and the effector memory composition on different clonotype within the respective HIV-epitope response (following columns).



Supplemental figure 3: Comparison of memory phenotypes on HIV-1 specific CD8+ T cell populations and corresponding CD57 expression.



Supplemental figure 4: Differential CD57 expression independent from TemRO/TemRA-phenotype on HIV-specific CD8+ T cells. **A-C:** Distribution of CD57 on different memory subsets on TRBV+ and negative HIV-specific CD8+ T cells in subjects 10022 (**A** and **B**) and 10004 (**C**).