

Supporting Information for

**Direct Assay of  $\delta$ -Aminolevulinic Acid Dehydratase in Heme Biosynthesis for the Detection of Porphyrrias by Tandem Mass Spectrometry.**

John R. Choiniere<sup>1</sup>, C. Ronald Scott<sup>2</sup>, Michael H. Gelb<sup>1,3\*</sup>, František Tureček<sup>1\*</sup>

<sup>1</sup>Department of Chemistry, <sup>2</sup>Pediatrics, and <sup>3</sup>Biochemistry, University of Washington, Seattle, WA, 98195-1700, USA

Manuscript submitted to Analytical Chemistry, April 2010

Figures S1-S3.

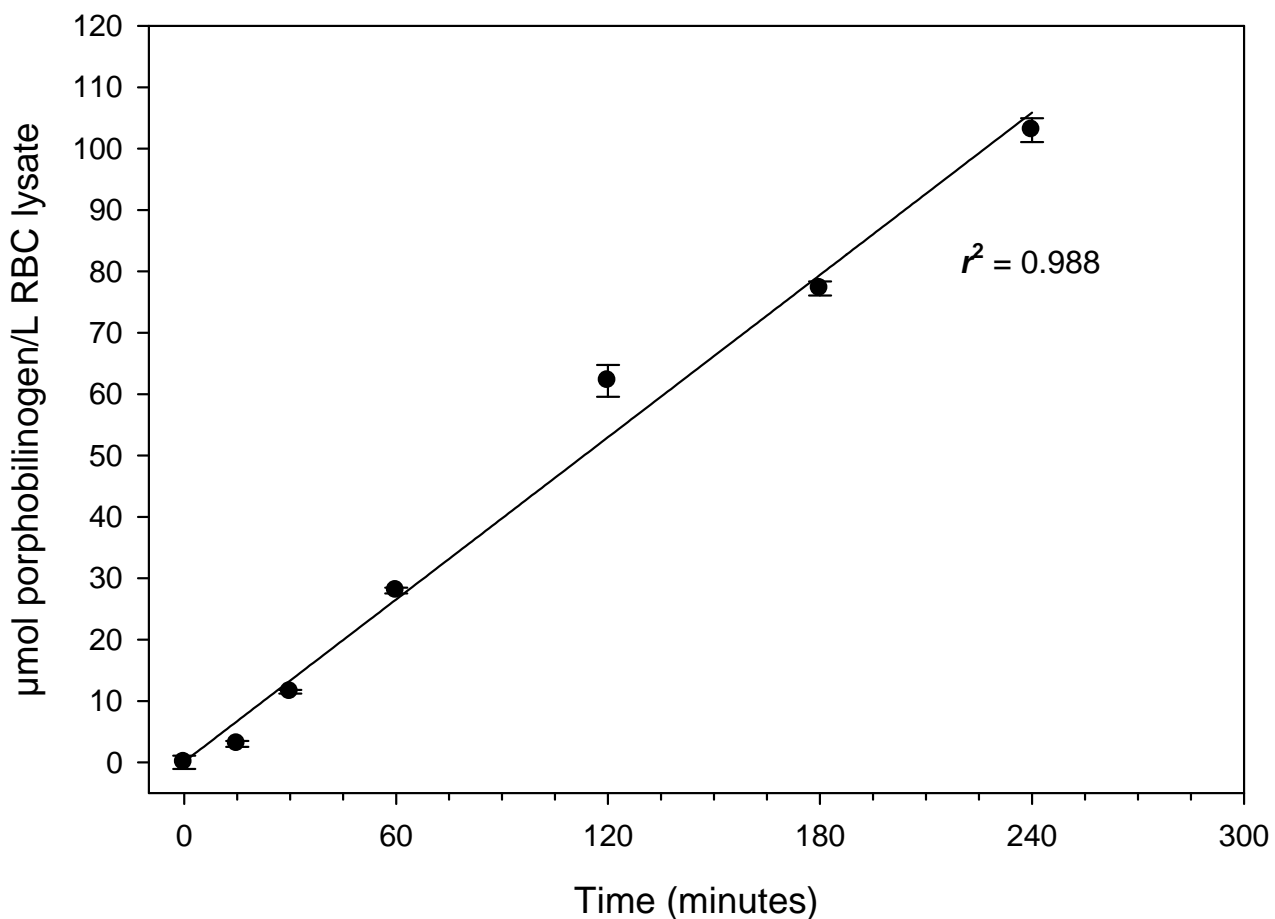


Figure S1. Plot of porphobilinogen product formation against incubation time (after 15-minute preincubation), showing linear dependence,  $r^2 = 0.988$ . The data error bars are one standard deviation of triplicate measurements.

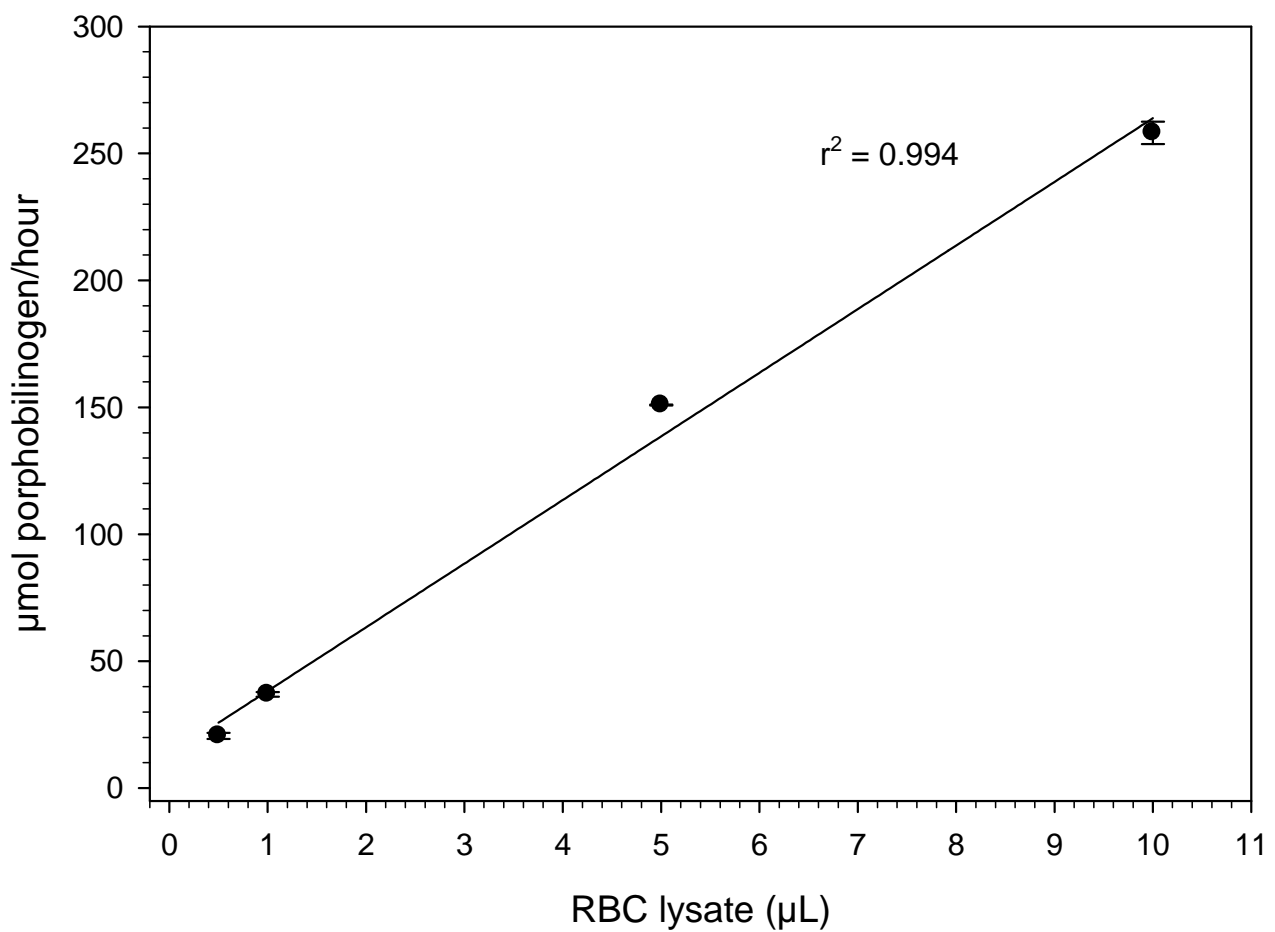


Figure S2. Graph of enzyme activity against amount of erythrocyte lysate, showing linear dependence,  $r^2 = 0.994$ . The data error bars are one standard deviation of triplicate measurements.

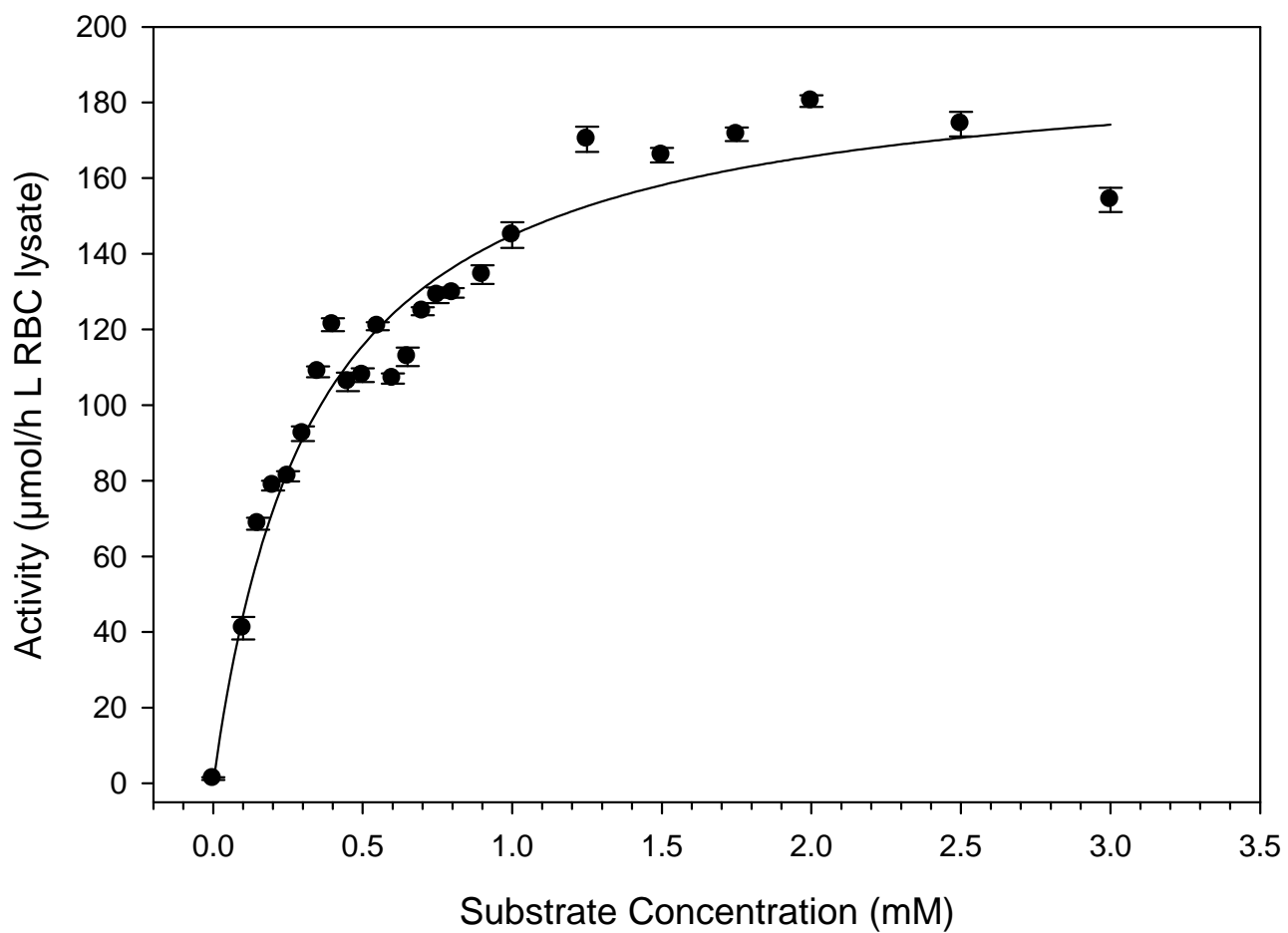


Figure S3. Enzyme activity as a function of substrate concentration. The data error bars are one standard deviation of triplicate measurements.