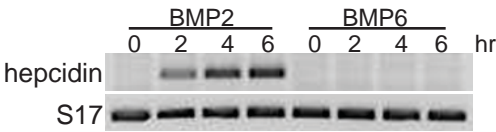
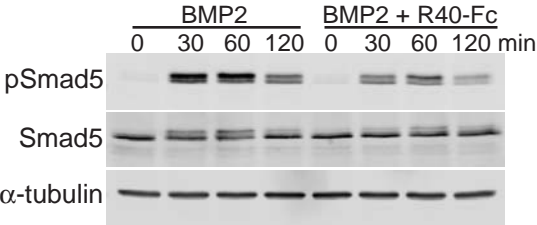


**Supplemental Table 1. Genes induced  $\geq 2.0$ -fold by BMP2 or BMP6 in Hep3B cells**

Gene	Accession No.	Gene Name	Fold Change	
			BMP2	BMP6
ID1	NM_181353	Inhibitor of DNA binding 1	13.2	11.2
ID3	NM_002167	Inhibitor of DNA binding 3	11.1	9.7
SLC6A19	NM_001003841	Solute carrier family 6, member 19	7.2	6.3
SMAD6	NM_005585	SMAD family member 6	6.7	6.2
SMAD7	NM_005904	SMAD family member 7	4.3	4.5
GHR	NM_000163	Growth hormone receptor	4.1	4.0
BAMBI	NM_012342	BMP and activin membrane-bound inhibitor homolog	4.1	3.8
	NR_015379	urothelial cancer associated 1	4.1	3.3
HEY1	NM_012258	Hairy/enhancer-of-split related with YRPW motif 1	4.0	3.9
RASSF5	NM_182663	Ras association (RalGDS/AF-6) domain family member 5	3.9	3.5
SLC29A3	NM_018344	Solute carrier family 29, member 3	3.8	3.6
DSE	NM_013352	Dermatan sulfate epimerase	3.7	3.7
SMAD9	NM_001127217	SMAD family member 9	3.7	3.5
PFKFB3	NM_004566	6-phosphofructo-2-kinase/fructose-2,6-biphosphatase 3	3.6	3.3
GPD1L	NM_015141	Glycerol-3-phosphate dehydrogenase 1-like	3.5	3.4
ATOX8	NM_032827	Atonal homolog 8	3.4	3.9
ID4	NM_001546	Inhibitor of DNA binding 4	3.4	2.8
GATA2	NM_032638	GATA binding protein 2	3.2	3.1
GATA3	NM_001002295	GATA binding protein 3	3.1	3.1
SLCO2A1	NM_005630	Solute carrier organic anion transporter family, member 2A1	3.1	2.9
PAQR8	NM_133367	Progesterin and adipoQ receptor family member VIII	2.9	2.9
DUSP1	NM_004417	Dual specificity phosphatase 1	2.9	2.2
SAMD11	NM_152486	Sterile alpha motif domain containing 11	2.8	2.5
SNAI1	NM_005985	Snail homolog 1 (Drosophila)	2.8	2.7
MCC	NM_001085377	Mutated in colorectal cancers	2.7	2.9
TBX3	NM_016569	T-box 3	2.6	2.8
SPRY4	NM_030964	Sprouty homolog 4 (Drosophila)	2.6	2.4
SCNN1A	NM_001038	Sodium channel, nonvoltage-gated 1 alpha	2.6	2.5
SSTR2	NM_001050	Somatostatin receptor 2	2.5	2.6
SNAI2	NM_003068	Snail homolog 1 (Drosophila)	2.5	2.5
RAB31	NM_006868	RAB31, member RAS oncogene family	2.5	2.3
PRICKLE1	NM_153026	Prickle homolog 1 (Drosophila)	2.4	2.6
PITPNC1	NM_181671	Phosphatidylinositol transfer protein, cytoplasmic 1	2.4	2.0
ANKRD1	NM_014391	Ankyrin repeat domain 1 (cardiac muscle)	2.3	2.0
FZD7	NM_003507	Frizzled homolog 7 (Drosophila)	2.2	2.4
MTERFD2	NM_182501	MTERF domain containing 2	2.1	2.0
FAM169A	NM_015566	Family with sequence similarity 169, member A	2.1	2.4
ETS2	NM_005239	V-ets erythroblastosis virus E26 oncogene homolog 2	2.1	2.1
GRK5	NM_005308	G protein-coupled receptor kinase 5	2.0	2.1
SPAG1	NM_003114	Sperm associated antigen 1	2.0	2.0
DNAJC22	NM_024902	DnaJ (Hsp40) homolog, subfamily C, member 22	2.0	2.2
DLL4	NM_019074	Delta-like 4 (Drosophila)	2.0	2.0
ZMIZ1	NM_020338	Zinc finger, MIZ-type containing 1	2.0	2.1



**Supplemental Figure 1.** Induction of hepcidin gene expression in AML12 cells. Time course of accumulation of hepcidin and S17 mRNAs by RT-PCR after incubation of AML12 cells with BMP2 or BMP6 (200 ng/mL) in serum-free medium for 0 – 6 hr.



**Supplemental Figure 2.** Time course of RGMc40 inhibition of BMP2-mediated signaling. BMP2 (100 ng/ml) was pre-incubated for 3 hr at 20°C alone (left) or with 20-fold molar excess of RGMc40-Fc (R40-Fc, right). After addition to Hep3B cells for indicated times, pSmad5, Smad5, and α-tubulin were detected by immunoblotting.