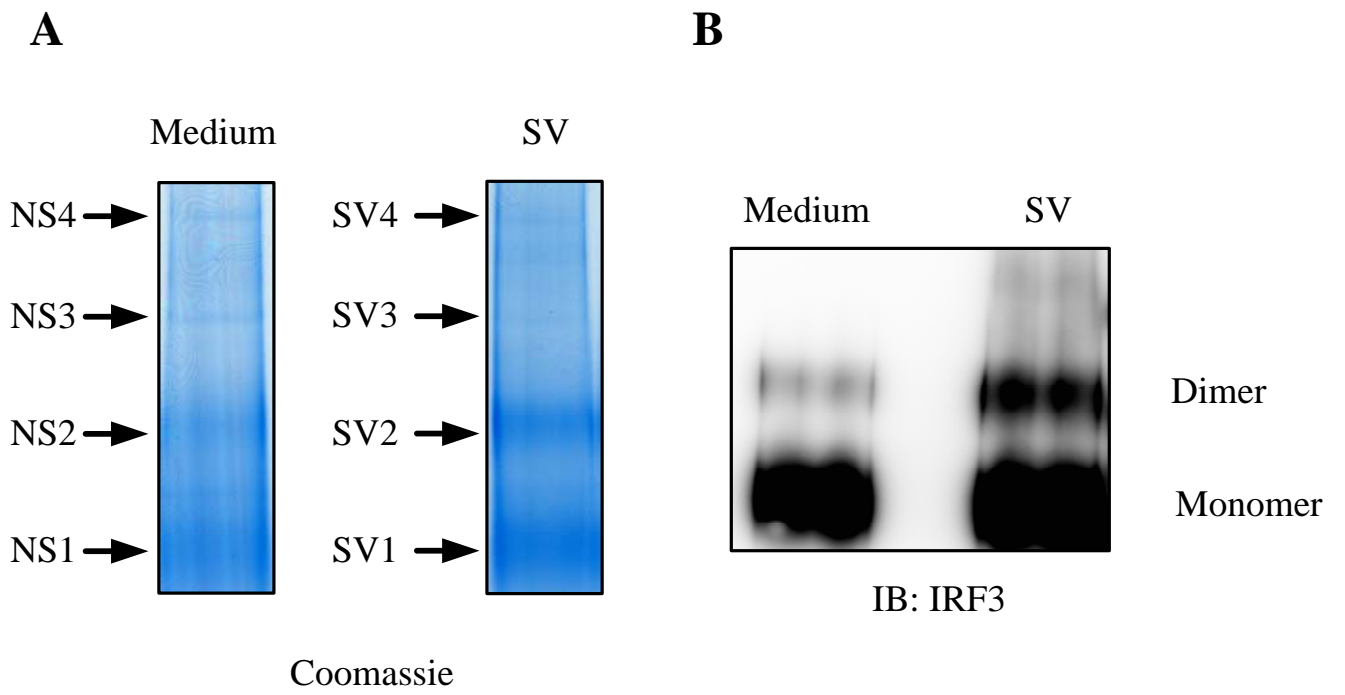


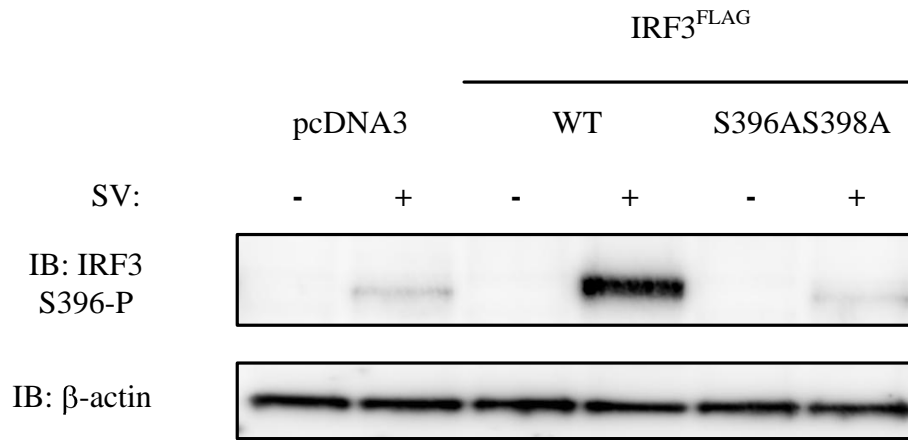
SUPPLEMENTAL DATA

Supplementary Fig. 1. Blue Native PAGE resolution of IRF3. HEK293 cells were transiently transfected with IRF3^{FLAG}. 24 hours post-transfection cells were infected or not with SV (12 hours). Lysates were immunoprecipitated with anti-FLAG-Sepharose and proteins were separated by BN-PAGE and stained with Coomassie-based SimplyBlue Safestain (A) or separated by BN-PAGE followed by immunoblotting with anti-IRF3 (B). Bands excised and analysed by MS are indicated in A. NS: non-stimulated, SV: SV-stimulated cells. NS1 and SV1 correspond to IRF3 monomers. NS2-4 and SV2-4 represent IRF3-containing complexes of higher molecular weights.

Supplementary Fig. 2. HEK293 cells were transfected with FLAG-tagged IRF3, IRF3^{S396AS398A} or the empty vector and infected with SV for 12 hours. Lysates were prepared and separated by denaturing gel electrophoresis. Phosphorylation of Ser³⁹⁶ was examined by immunoblotting with an antibody recognizing phosphorylated Ser³⁹⁶. Membranes were reprobed with anti-β-actin.



Supplementary Figure 1.



Supplementary Figure 2.