

A

BD:CR1

AD:CR1

BD:empty

AD:CR1Δ(69-82)

BD:CR1

AD:CR1Δ(69-82)

BD:CR1Δ(69-82) AD:empty

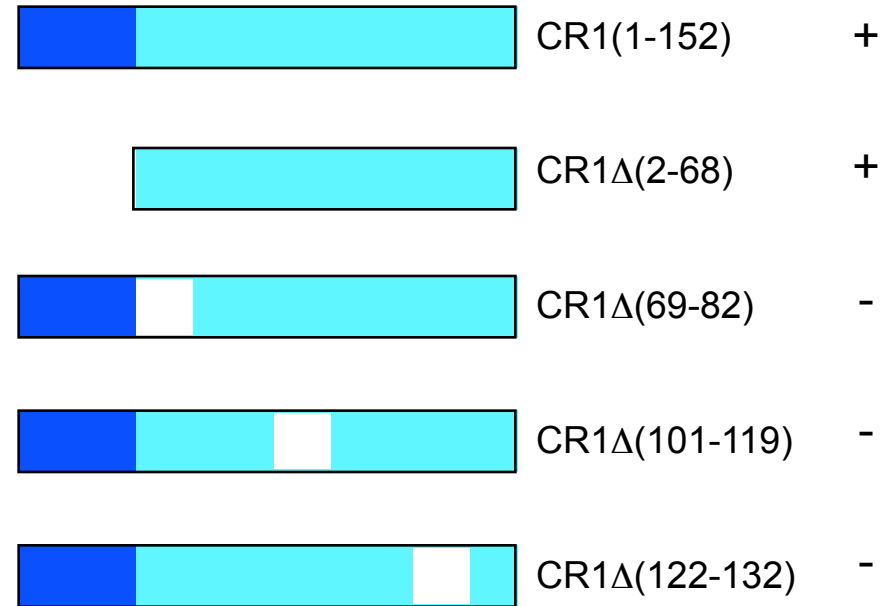
BD:CR1Δ(69-82) AD:CR1

B

worm-only

conserved

interacts with CR1



Supplemental Figure S4. Deletions within CR1 block PAR-3 self-association in yeast two-hybrid assays. A. Portion of a yeast growth plate showing growth when both Gal4 binding domain and activation domain fused to PAR-3 CR1 domain are co-expressed, but little or no growth when amino acids 69-82 are deleted from either of the fusion proteins. B. Summary of yeast two-hybrid results with other deletions of CR1.