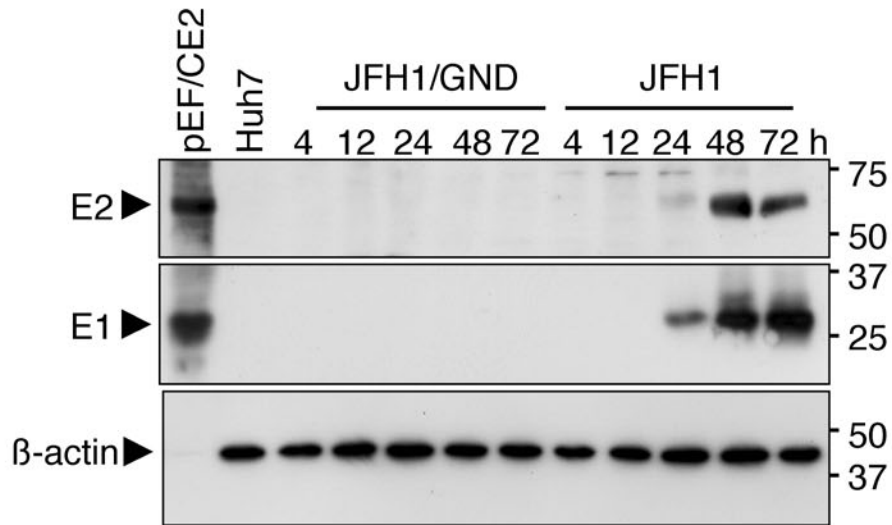


## Supplementary Figure 1



**Supplementary Fig. 1:** Efficient replication of JFH1 HCV RNA in transiently transfected Huh7 cells as determined by Western blot analysis for HCV proteins E2 and E1 (upper and middle panel, respectively). Time points of cell harvests are specified above the lanes. Positive controls were obtained from DNA-transfected Huh7 cells (pEF/CE2); untransfected Huh7 cells served as negative controls (Huh7). Expression plasmids pEF/CE2 contained the Core-to-E2 region under control of an elongation factor promoter. E2- and E1-specific polyclonal antibodies or core-specific monoclonal antibody were used for detection. Beta-actin was used to control for equal protein load in each lane. The  $\beta$ -actin signal in pEF/CE2 lane is faint because due to high expression only low amounts of protein were loaded. Specific proteins are marked with arrowheads. Both E1 and E2 proteins were expressed with similar kinetics compared to other viral proteins shown in Fig. 1c.