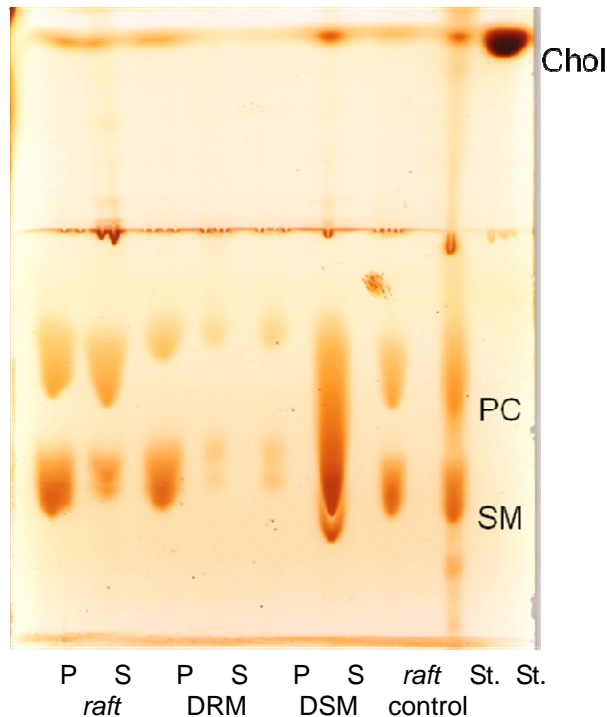


## Supplemental Data



TLC of insoluble (P) and soluble (S) membrane fractions obtained after Triton X-100 treatment of three reconstituted lipid systems: *raft*-containing membrane, lipid bilayer that are reported to contain domains with the detergent insolubility properties of *rafts* isolated from plasma membranes (PC:SM:Chol, 1:1:1); DRM-like model, lipid bilayer composed of only the lipid classes and proportions reported to form detergent-insoluble domains (PC:SM:Chol, 0.35:1:0.87), and DSM-like model, lipid bilayer composed of only the lipid classes and proportions that display high detergent solubility (PC:SM:Chol 9:1:2.125). Also shown are the complete lipid extract of the *raft*-containing membrane without detergent treatment (*raft* control) and standards of PC, SM and Chol. In order to separate PC, SM and Chol, chloroform-methanol-acetic acid-0.15 M NaCl (20:10:3.2:1, per vol.) was used as the first developing solvent, and ether as the second one. The spots were revealed after exposing the plate to iodine vapors.