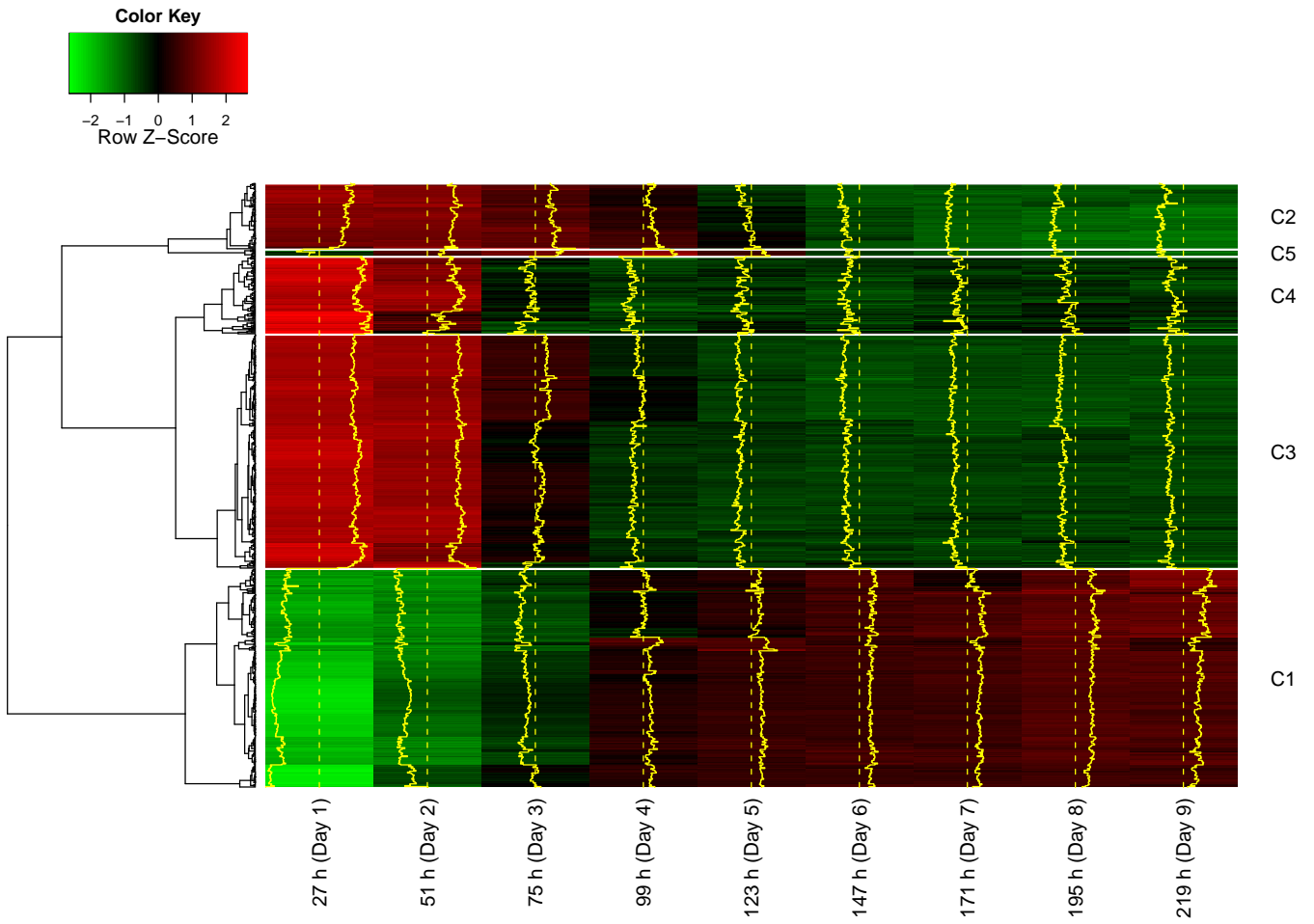
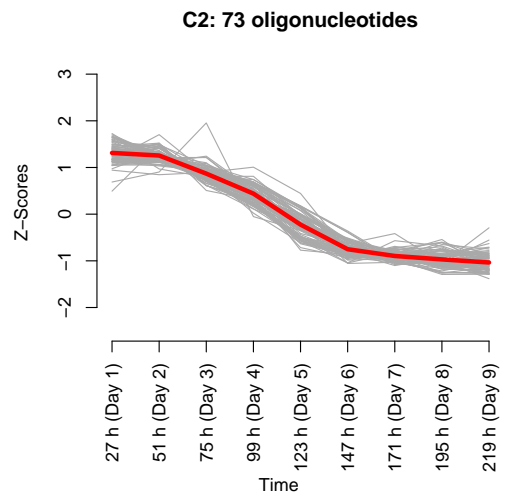
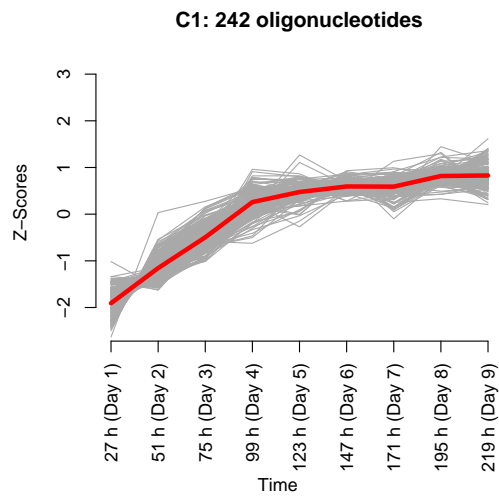


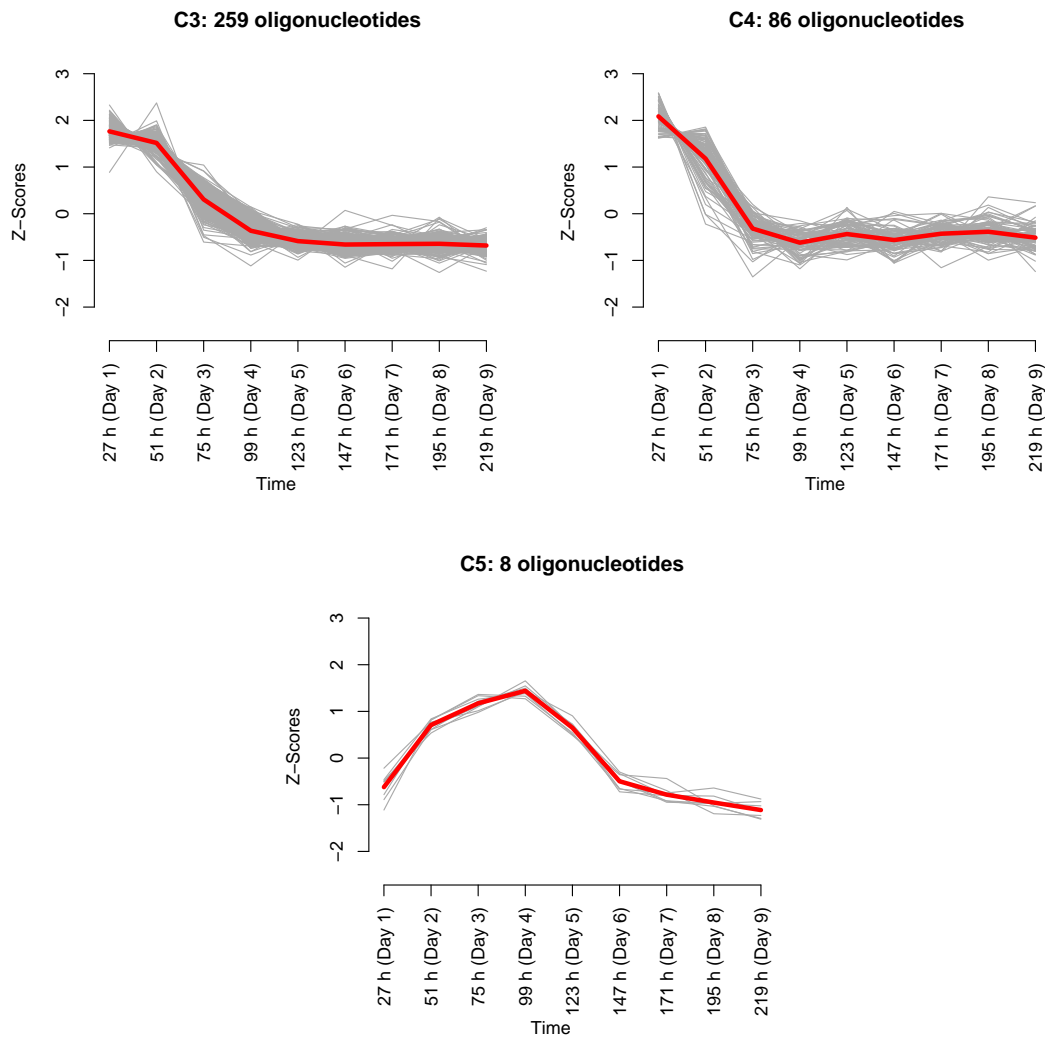
# Wheat fermentation D13W

## A



## B

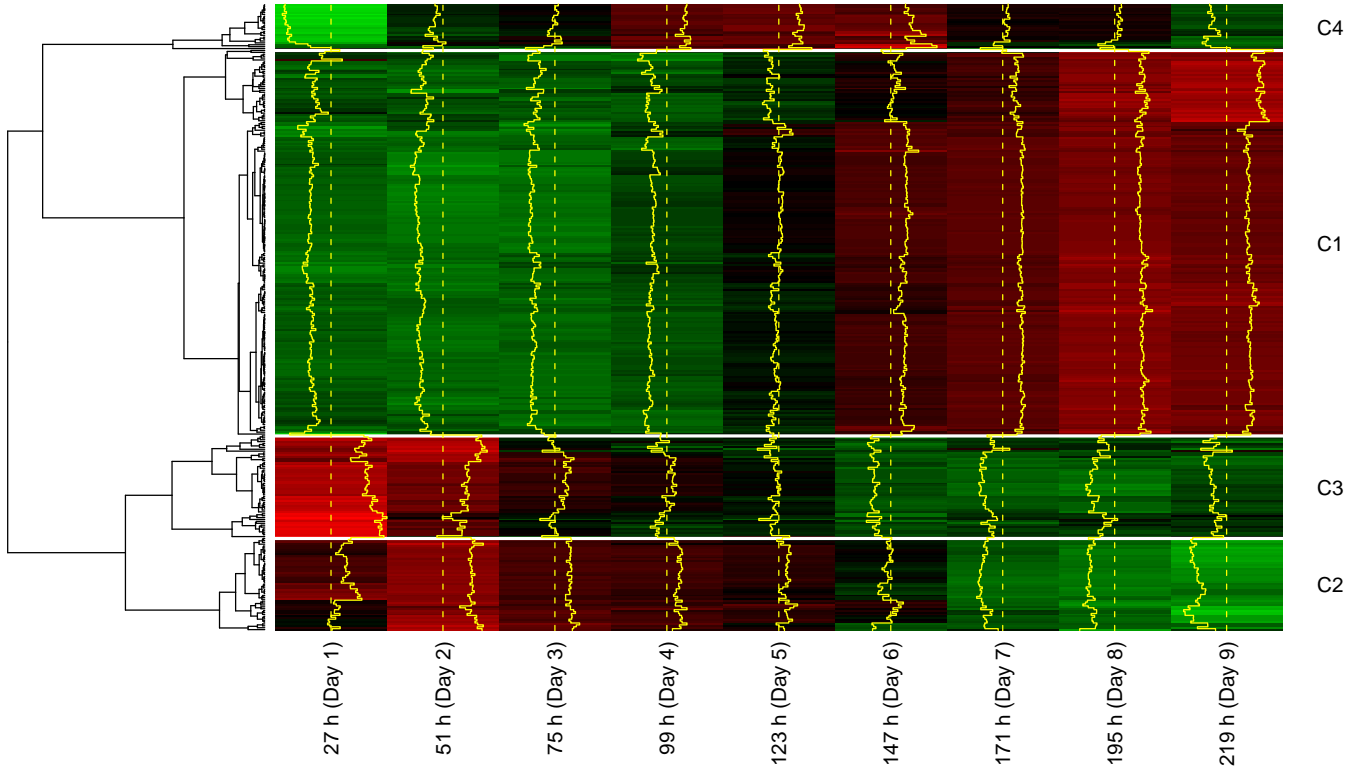
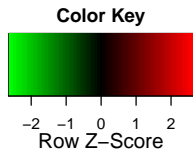




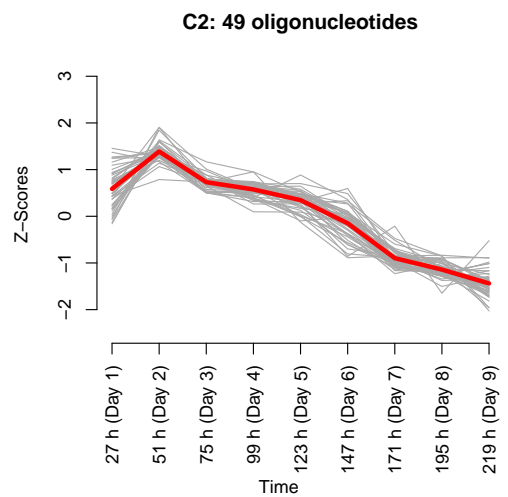
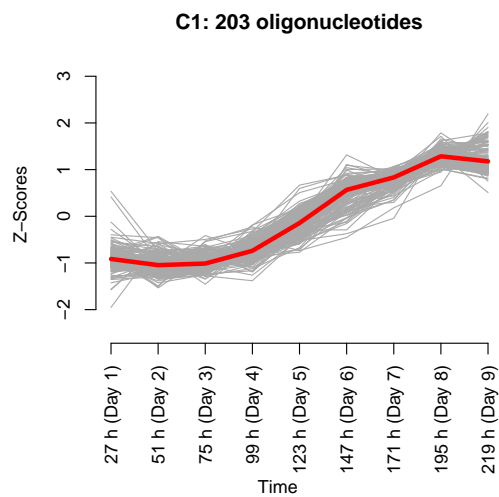
**Figure Sup1:** Intensity profiles obtained through hybridization of metatranscriptome samples of wheat fermentation D13W. [A] For a total of 672 out of 2,269 oligonucleotides, the intensity was above background level for at least one time point of the 10-day back-slopped sourdough fermentation process. The 672 oligonucleotides whose intensities were above background level could be clustered into five groups (C1 to C5) according to their  $Z$ -score profiles. The  $Z$ -scores varied from green (-2), *i.e.*, below the average response of that oligonucleotide, to red (+2), *i.e.*, above the average response of that oligonucleotide. [B] Representation of the hybridization intensity profiles of the four clusters of oligonucleotides.  $X$ -axis: sampling time,  $Y$ -axis:  $Z$ -score of the different oligonucleotides.

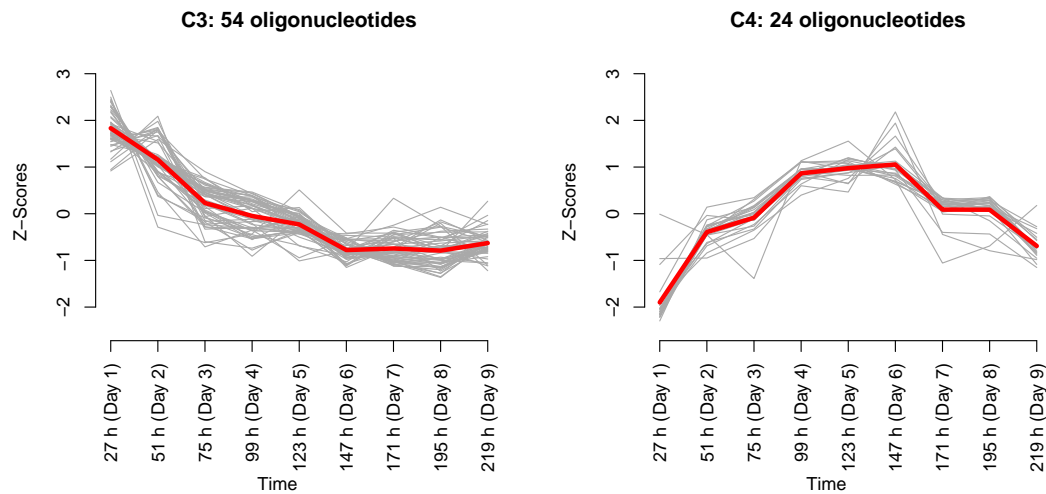
# Spelt fermentation D12S

## A



## B

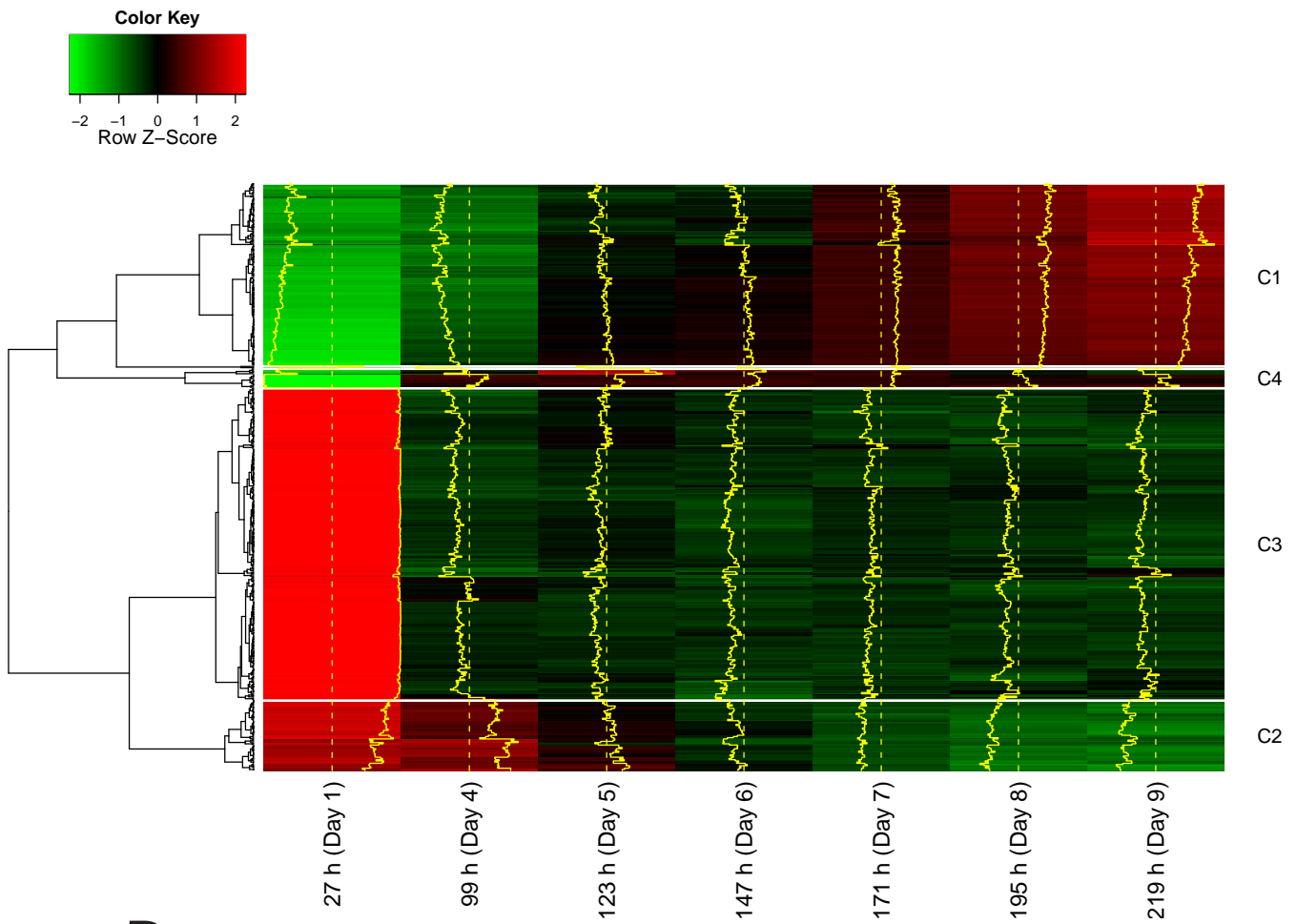




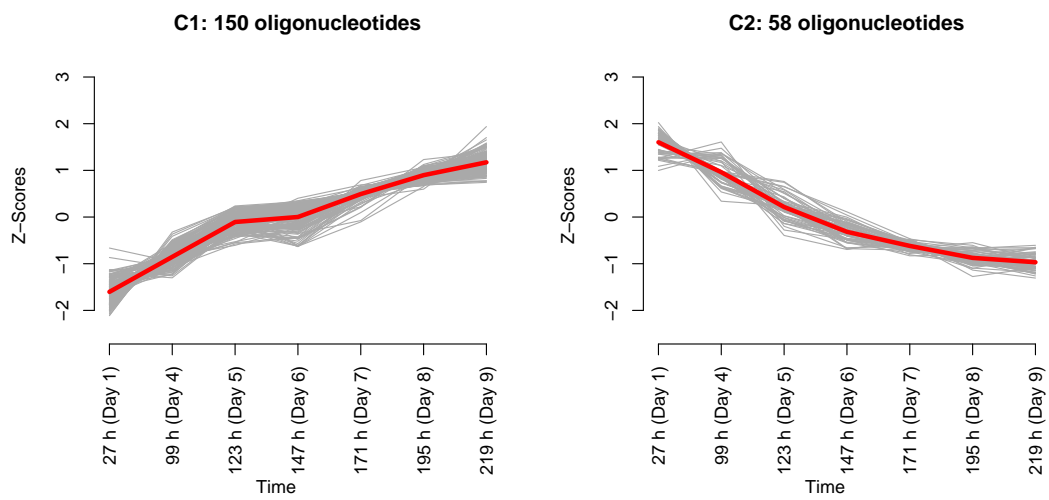
**Figure Sup2:** Intensity profiles obtained through hybridization of metatranscriptome samples of spelt fermentation D12S. [A] For a total of 330 out of 2,269 oligonucleotides, the intensity was above background level for at least one time point of the 10-day back-slopped sourdough fermentation process. The 330 oligonucleotides whose intensities were above background level could be clustered into four groups (C1 to C4) according to their  $Z$ -score profiles. The  $Z$ -scores varied from green (-2), *i.e.*, below the average response of that oligonucleotide, to red (+2), *i.e.*, above the average response of that oligonucleotide. [B] Representation of the hybridization intensity profiles of the four clusters of oligonucleotides.  $X$ -axis: sampling time,  $Y$ -axis:  $Z$ -score of the different oligonucleotides.

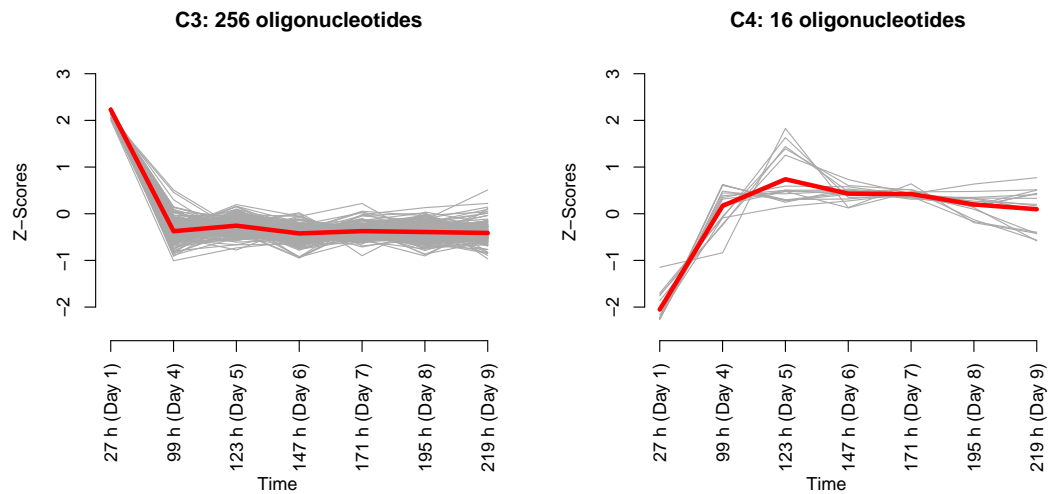
# Spelt fermentation D13S

## A



## B





**Figure Sup3:** Intensity profiles obtained through hybridization of metatranscriptome samples of spelt fermentation D13S. [A] For a total of 482 out of 2,269 oligonucleotides, the intensity was above background level for at least one time point of the 10-day back-slopped sourdough fermentation process. The 482 oligonucleotides whose intensities were above background level could be clustered into four groups (C1 to C4) according to their  $Z$ -score profiles. The  $Z$ -scores varied from green (-2), *i.e.*, below the average response of that oligonucleotide, to red (+2), *i.e.*, above the average response of that oligonucleotide. [B] Representation of the hybridization intensity profiles of the four clusters of oligonucleotides.  $X$ -axis: sampling time,  $Y$ -axis:  $Z$ -score of the different oligonucleotides.