

Supporting Information

Matsuura et al. 10.1073/pnas.1004675107

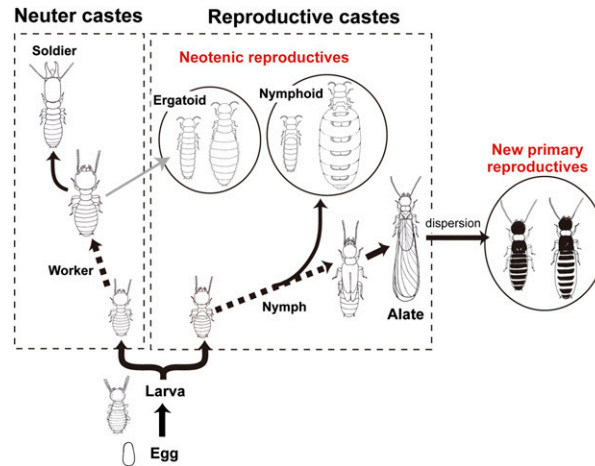


Fig. S1. Differentiation pathways of primary and secondary (neotenic) reproductives in *Reticulitermes* termites. Primary reproductives (queen and king) derive from alates and found new colonies. Nymphoid, neotenic reproductives differentiated from nymphs. Ergatoid, neotenic reproductives differentiated from workers.

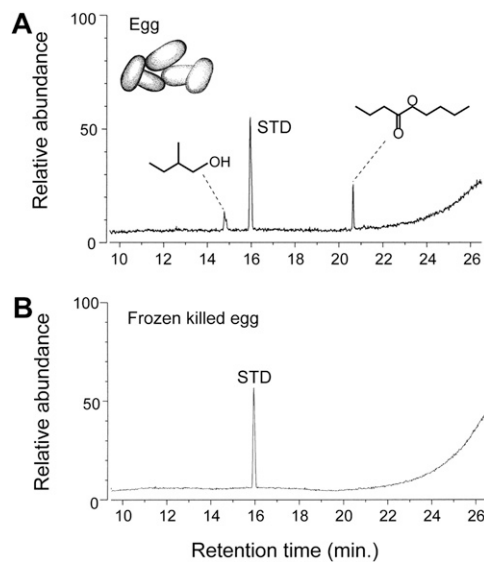


Fig. S2. (A) Chromatograms of headspace-collected volatiles of termite eggs. Egg volatiles consisted of n-butyl-n-butyrate and 2-methyl-1-butanol. STD, toluene as an internal standard. (B) Frozen-killed eggs showed no volatile emission.

Table S1. List of royal composition of mature field colonies from which reproductives were successfully collected

Colony code	King				Queen			
	Primary	Secondary		Total	Primary	Secondary		Total
		Nym.	Erg.			Nym.	Erg.	
TA980526	1	0	0	1	0	13	0	13
TA980604	1	0	0	1	0	22	0	22
TA980809	1	0	0	1	0	21	0	21
TB991016A	1	0	0	1	0	18	0	18
TA000619	1	0	0	1	0	74	0	74
KB000904A	1	0	0	1	0	25	0	25
KB000907	1	0	0	1	0	31	0	31
KB010703	1	0	0	1	0	67	0	67
KB010725	1	0	0	1	0	109	0	109
KB010728	0	0	0	0*	0	15	0	15
IW010730	1	0	0	1	0	15	0	15
U060712	1	0	0	1	1	128	0	129
U060719	0	0	0	0*	0	45	0	45
Y060730A	0	0	0	0*	0	37	0	37
Y060730B	0	0	0	0*	0	25	0	25
Y060731	1	0	0	1	0	29	0	29
Y060802A	1	0	0	1	0	37	0	37
Y060802B	1	0	0	1	0	38	0	38
T0608007	0	0	0	0*	0	10	0	10
Y060810B	1	0	0	1	0	80	0	80
U060814	0	0	0	0*	0	4	0	4
Y060815	0	0	0	0*	0	13	0	13
Y060816	0	0	0	0*	0	365	0	365
Y060901B	1	0	0	1	0	131	0	131
T060905B	1	0	0	1	0	15	0	15
U060912	1	0	0	1	0	70	0	70
Y060930	1	0	0	1	0	49	0	49
T070515	0	0	0	0*	0	68	0	68
T070528A	0	1	0	1	0	28	0	28
T080520A	0	1	0	1	0	78	0	78
TA090501A	1	0	0	1	0	21	0	21
OA090504A	1	0	0	1	0	15	0	15
OA090610H	1	0	0	1	0	25	0	25
KO090614B	1	0	0	1	0	10	0	10
OU090619A	1	0	0	1	0	61	0	61
TA090620B	1	0	0	1	0	5	0	5
TA090620A	1	0	0	1	0	656	0	656
TA090623B	1	0	0	1	0	73	0	73
TK090624A	1	0	0	1	0	208	0	208
TK090624B	1	0	0	1	0	36	0	36
HA090626A	1	0	0	1	0	40	0	40
SU090707A	1	0	0	1	0	14	0	14
SU090710C	1	0	0	1	0	10	0	10
NI090722A	1	0	0	1	0	39	0	39
SU090727B	1	0	0	1	0	16	0	16
U.K.090730A	1	0	0	1	0	15	0	15
GI090730B	1	0	0	1	0	103	0	103
Total	36	2	0	38	1	3,007	0	3,008
Mean (SE)	0.76 (0.11)	0.04 (0.01)	0 (0)	0.81 (0.12)	0.02 (0.00)	63.98 (9.33)	0 (0)	64 (3.34)

Nym., nymphoid; Erg., ergatoid. The colonies TK090624A and GI090730B were used for the chemical analysis.
*King was not collected, most likely because of collection error.