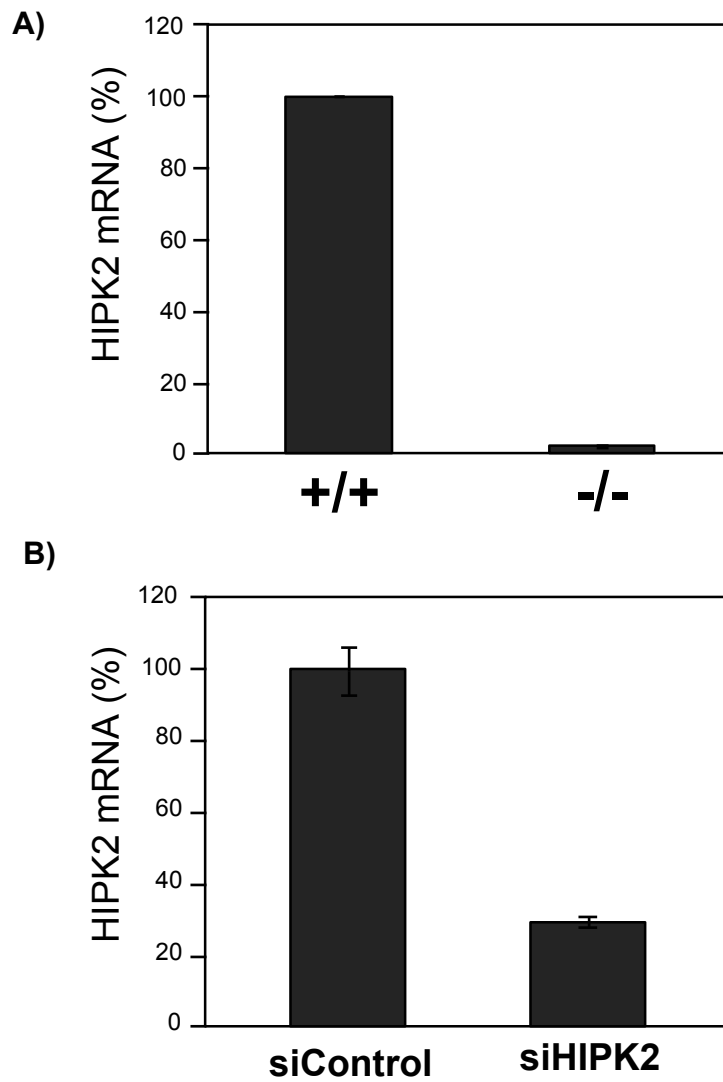


Supplemental Figure S1

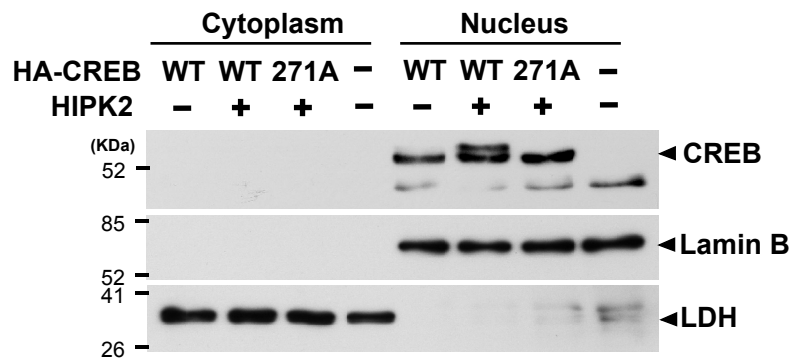
293 cells were transfected with wt-CREB or CREB 271A along with HIPK2. 1 ug of Nuclear extracts were incubated with a ³²P-labeled CRE oligonucleotide (Promega E3281, 5'-AGAGATTGCCTGACGTCAGAGAGCTAG-3') followed by polyacrylamide gel electrophoresis and autoradiograph. The same nuclear extracts were used to analyze the expression of HA-CREB and Lamin B by Western blotting.



Supplemental Figure S2

A) HIPK2 mRNA levels in HIPK2 $+/+$ and $-/-$ MEF cells were analyzed by RT-PCR.

B) HIPK2 mRNA levels in SH-SY5Y cells transfected with siControl or siHIPK2 RNA were analyzed by RT-PCR.



Supplemental Figure 3

SH-SY5Y cells were transfected with HIPK2 together with CREB wt or CREB 271A. Cytoplasmic and nuclear fractions were subjected to SDS-PAGE and Western blotting with anti-CREB, Lamin B, or LDH antibodies. The expression of LDH and Lamin B were shown as a marker of the cytoplasmic and nuclear fractions, respectively.