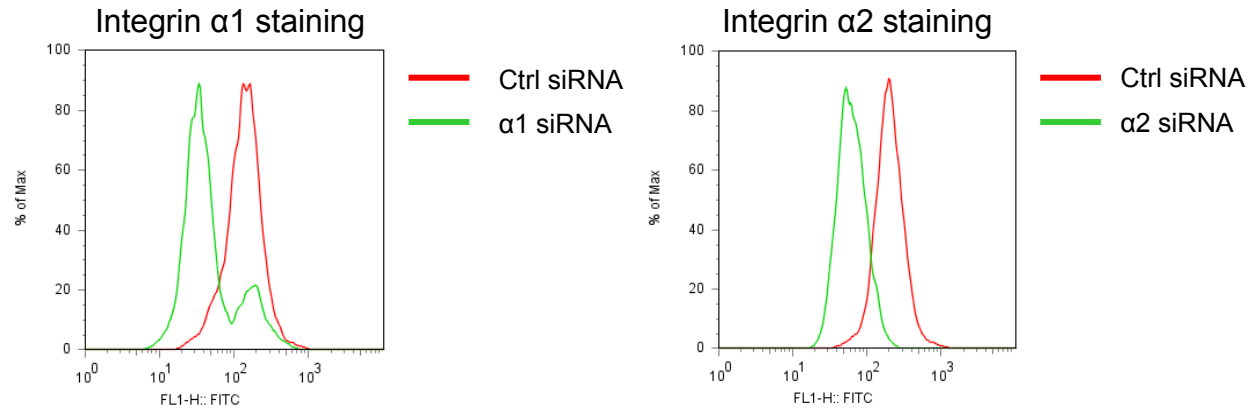


Supplemental Figure Legends

Supplemental Figure 1. Integrin $\alpha 1$ and $\alpha 2$ knockdown does not alter PLX4720-induced apoptosis in 3-D collagen. *A*, WM793 cells were transfected with control non-targeting, $\alpha 1$ integrin (Dharmacon D-008516-01) or $\alpha 2$ integrin (Dharmacon D-004566-02) siRNAs for 72 hours. Knockdown cells were washed in PBS, blocked in PBS/0.5% BSA for 15 min and incubated with anti-integrin $\alpha 1$ (FB12) antibody or anti-integrin $\alpha 2$ (P1E6) antibody for 1 hour at 4°C. Washed cells were then incubated with Alexa Fluor488-conjugated goat anti mouse antibody (Molecular Probes) for 30 min at 4°C. Finally, cells were washed and resuspended in blocking solution with 20% formaldehyde for flow cytometry analysis on the FACSCalibur (Becton Dickinson). *B*, Knockdown cells were analyzed by annexin V-APC staining and flow cytometry analysis, as in the main text.

Supplemental Figure 2. Expression of constitutively active Akt3 does not reactivate the ERK1/2 pathway in B-RAF knockdown cells. WM793, WM793 HA-Akt3 or WM793 Myr-HA-Akt3 cells were transfected with either control or B-RAF siRNAs for 72 h. Cells were lysed and analyzed by Western blotting with phosphoS473 Akt, B-RAF, phospho ERK1/2 and actin antibodies.

A



B

