

Supporting Information

Vasan et al. 10.1073/pnas.1009419107

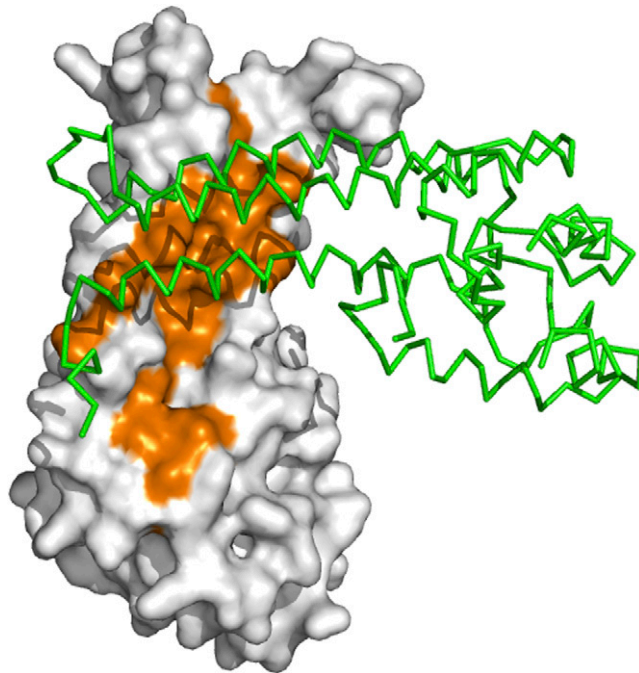


Fig. S1. In the crystal lattice, the hydrophobic region (orange) is buried in the interface with another, symmetry-related molecule. This interaction is not maintained in solution, where the C-terminal fragment of Vps53 behaves as a monomer.

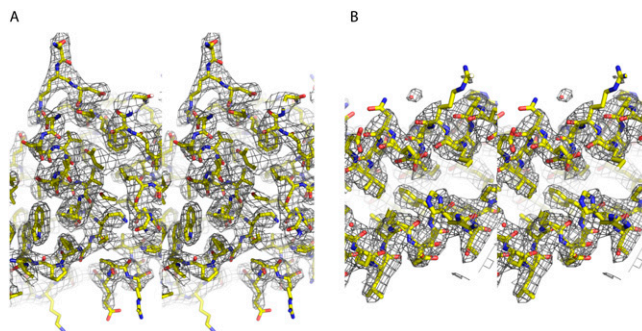


Fig. S2. Experimental electron density map contoured at 1.0σ and shown in stereo. The final, refined model is also shown. (A) A portion of the more C-terminal helical bundle. (B) A portion of the "stem."