

Supporting Information for

**“LC-MS/MS Coupled with Stable Isotope Dilution Method for
the Quantification of 6-Thioguanine and S⁶-Methylthioguanine
in Genomic DNA of Human Cancer Cells Treated with 6-
Thioguanine”**

by

Hongxia Wang and Yinsheng Wang

Department of Chemistry, University of California, Riverside, California 92521-0403

Anal. Chem., 2010

Figure S1. Positive ESI-MS of [U-¹⁵N₅]-^SdG (a), and the MS/MS of the [M+H]⁺ ion of *m/z* 289.0 (b), and shown in (c) is the MS/MS/MS of the ion of *m/z* 173.1 found in (b).

Figure S2. Positive ESI-MS of D₃-^SmdG (a), and the MS/MS of the [M+H]⁺ ion of *m/z* 301.0 (b).

Figure S3. Calibration curves for the quantification of ^SdG (a) and ^SmdG (b). The amounts of [U-¹⁵N₅]-^SdG (a) and D₃-^SmdG (b) added were 100 fmol. Error bars represent standard deviations resulting from three independent measurements.

Figure S4. Positive-ion ESI-MS/MS (a) and MS/MS/MS (b) spectra of 8-oxo-2'-deoxyguanosine.

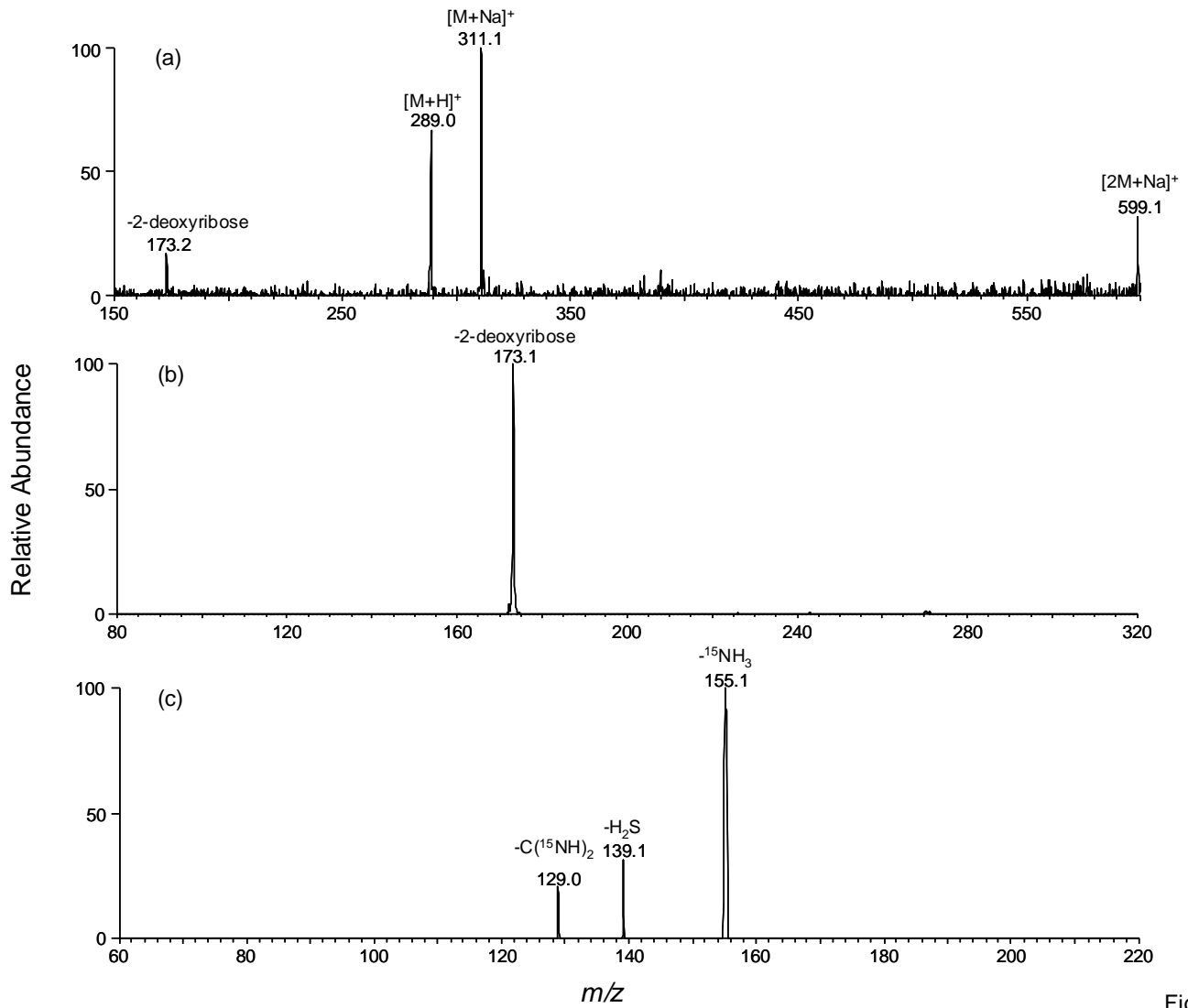


Figure S1

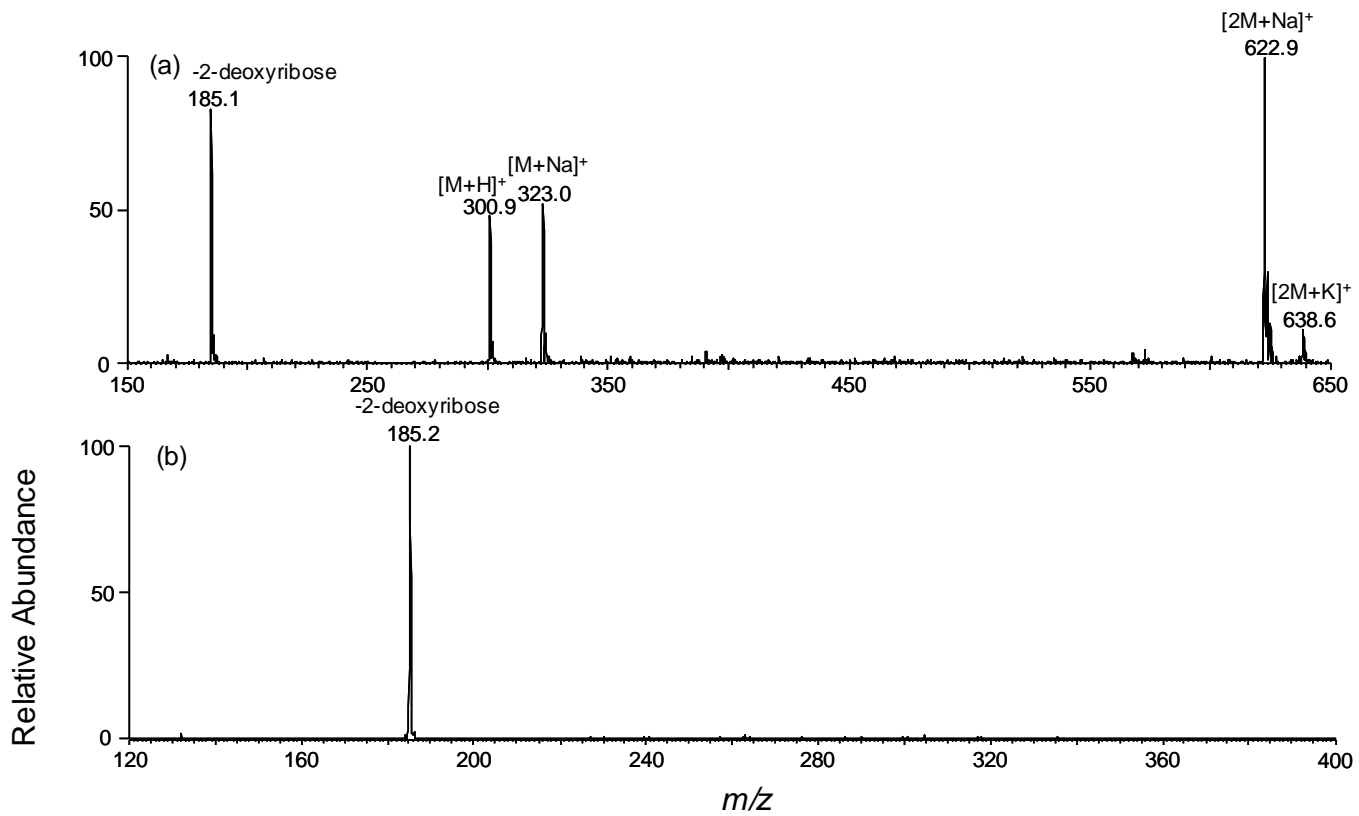


Figure S2

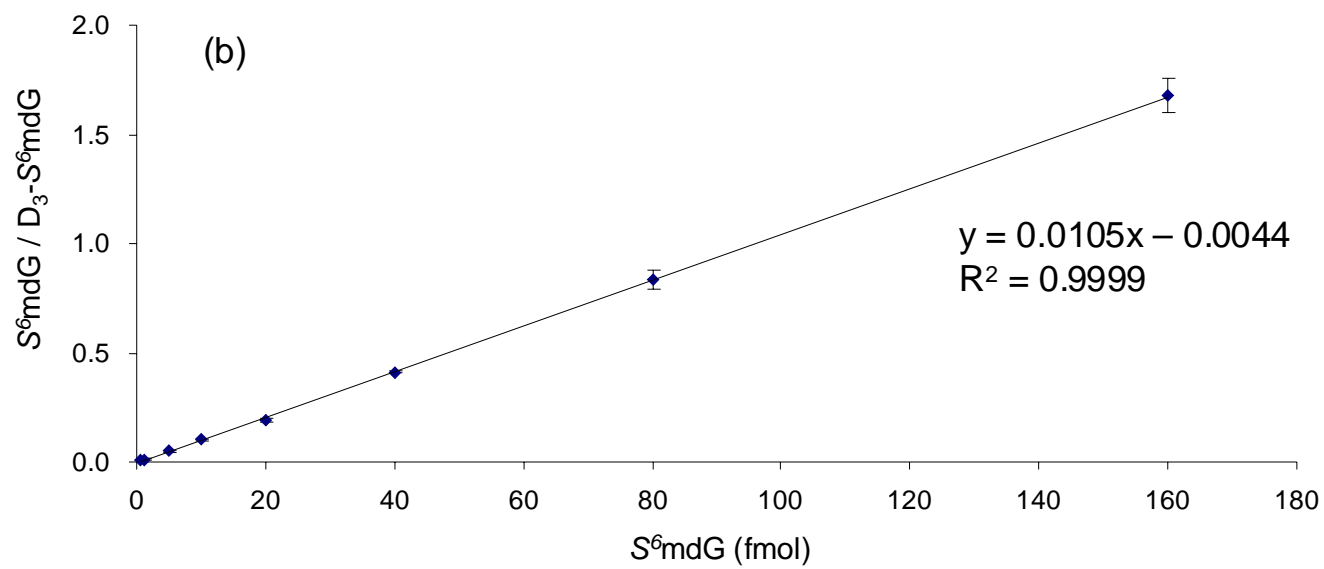
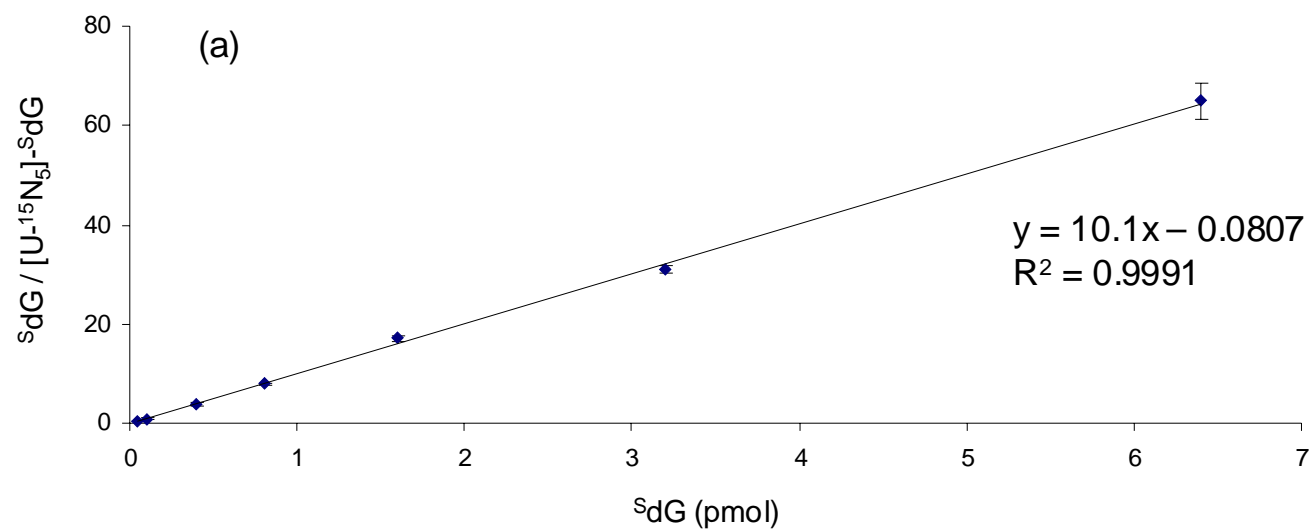


Figure S3

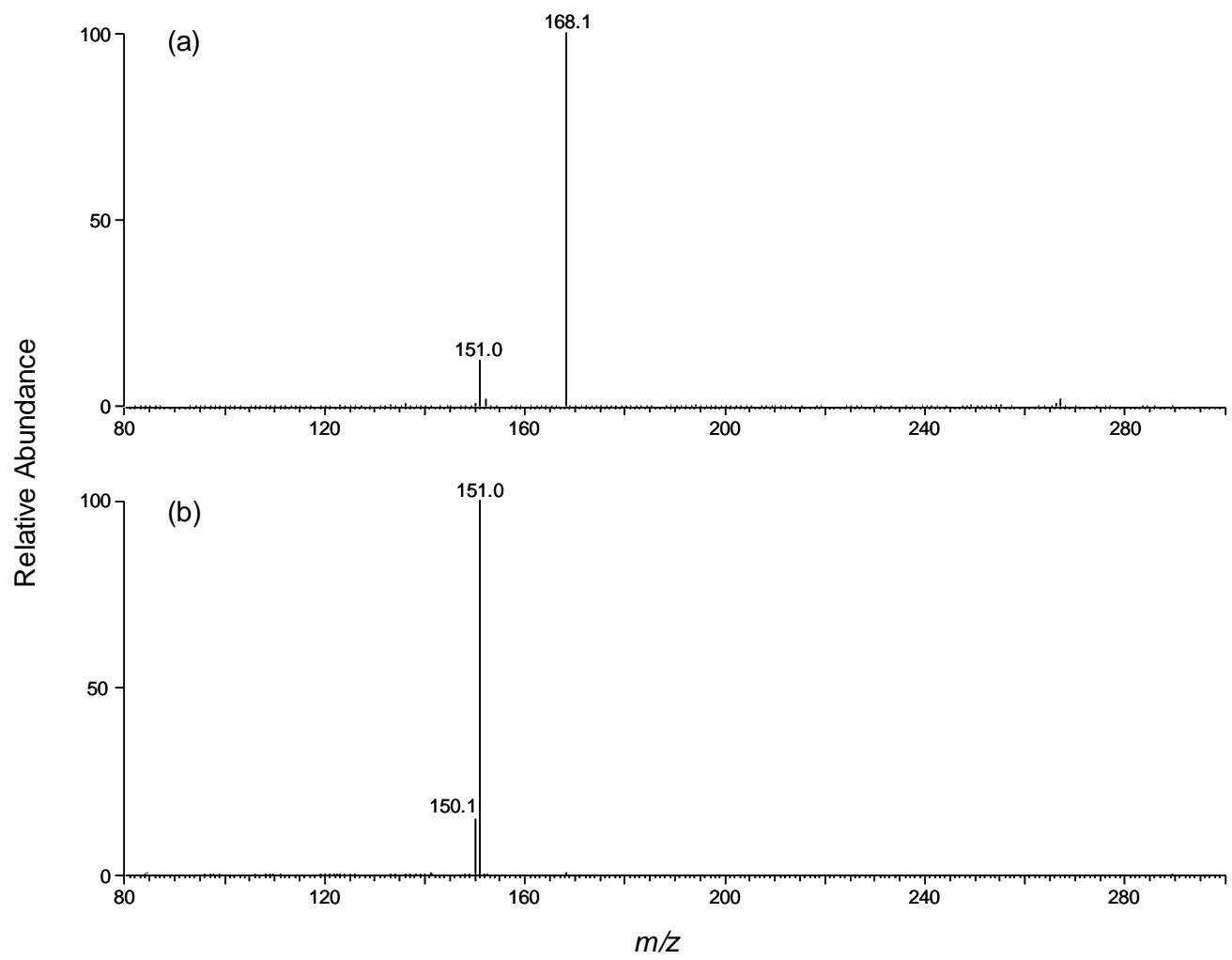


Figure S4