

Figure S1

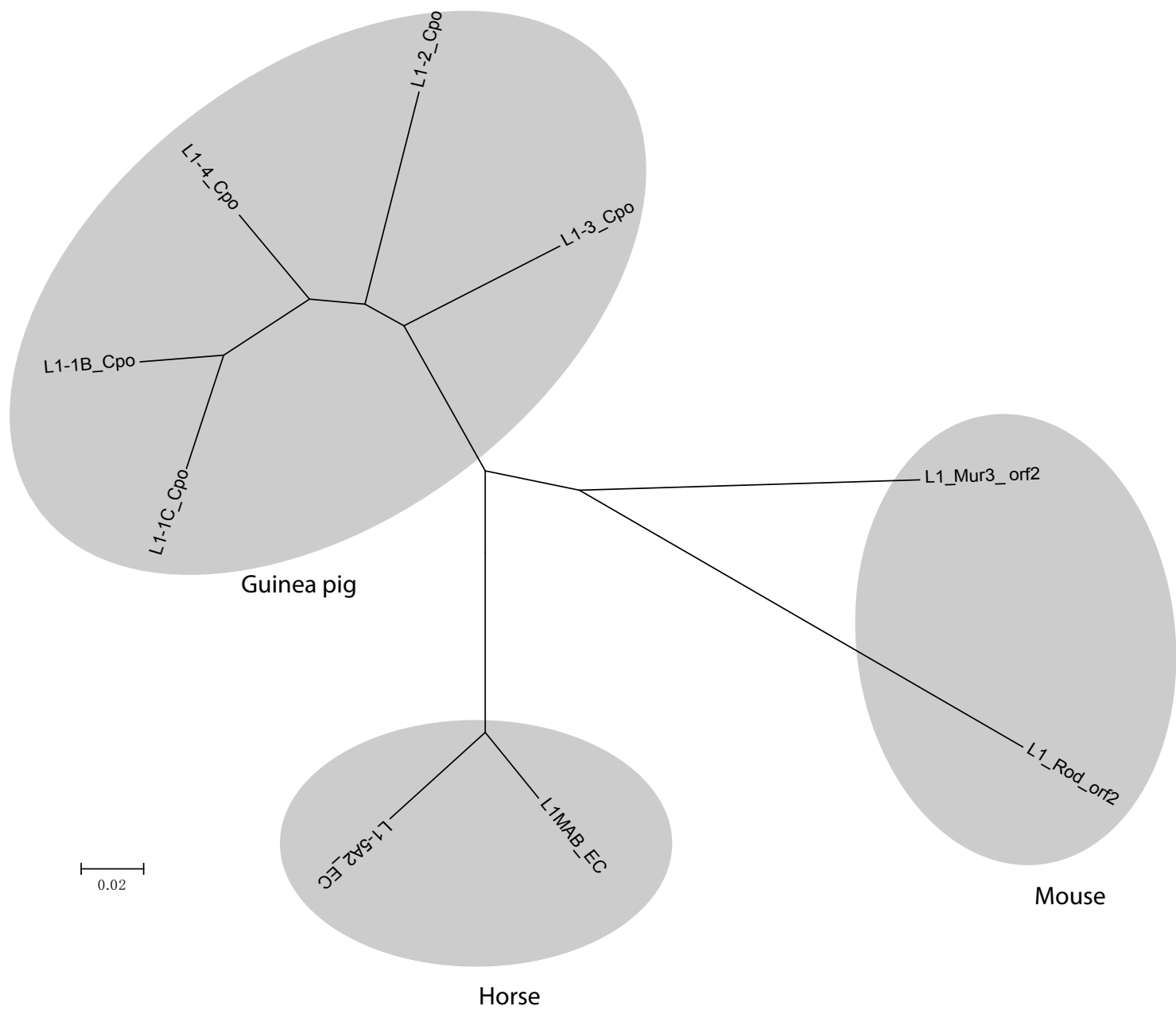


Figure S1: Phylogenetic tree of the L1 ORF2 sequences. The tree indicates that L1-3_Cpo is the oldest L1 in guinea pig (*Cavia porcellus*). The phylogenetic tree is based on ~950 bp sequences (Supplementary File S3), corresponding to the 514-829 amino acid position of human L1 ORF2p (AAD38785), covering most part of the reverse transcriptase domain. These sequences are from Rebase database.