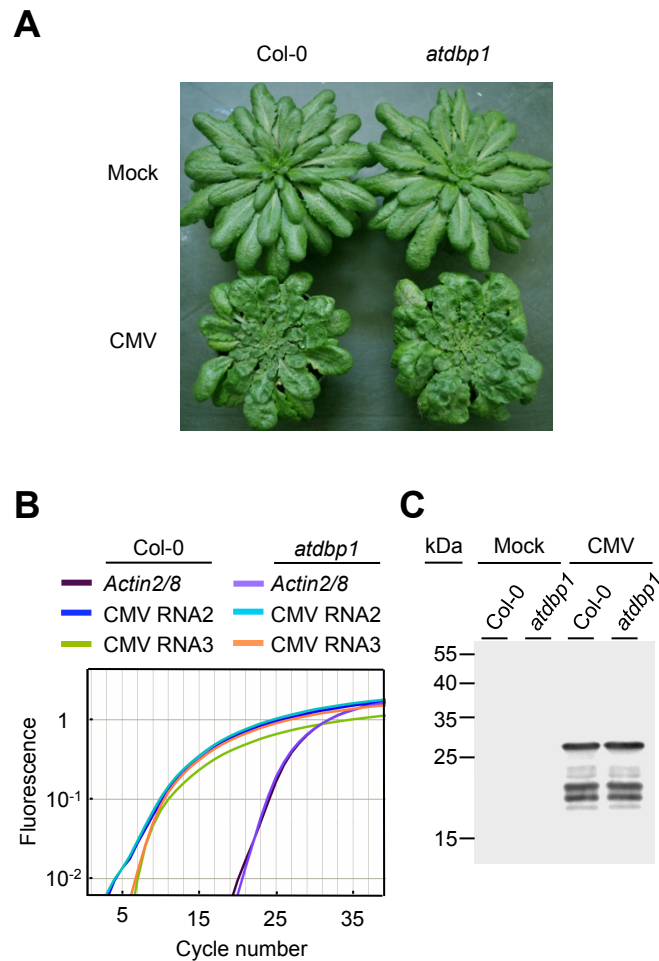


## SUPPLEMENTAL FIGURE S1



**Supplemental figure S1.** Loss of AtDBP1 function does not impair CMV infection.

**A.** Symptoms developed by Col-0 and *atdbp1* mutant plants 21 days after CMV inoculation. **B.** Accumulation of RNA 2 and RNA 3 from CMV 14 days after inoculation as measured by qRT-PCR. Accumulation of *ACT2/8* mRNA in Col-0 and *atdbp1* plant is used as control. **C.** Western-blot showing CMV protein accumulation 14 days after inoculation. An anti-CMV polyclonal antiserum (Loewe Biochemica GmbH, Germany) was used to immunodecorate the nitrocellulose membrane.