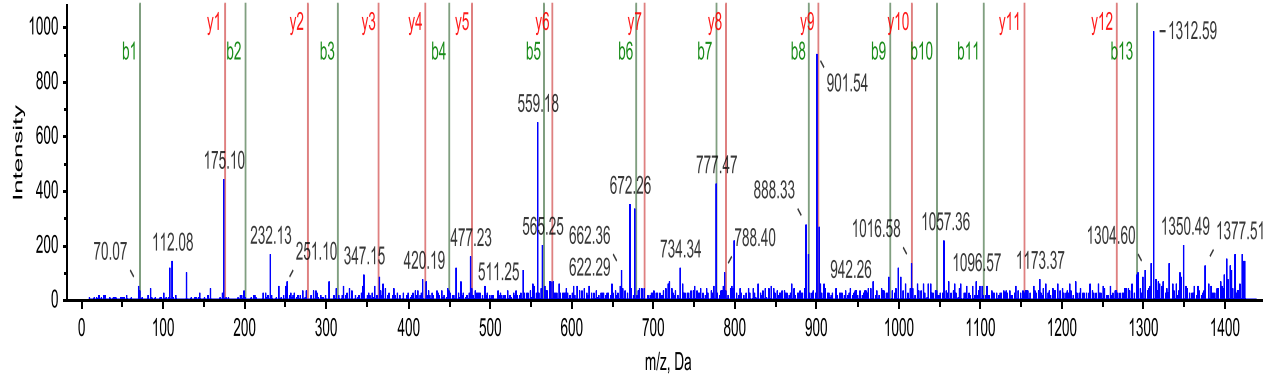


A, Colon

Prec. MW: 1464.7982 / Δ Mass: -0.0001

RCL2

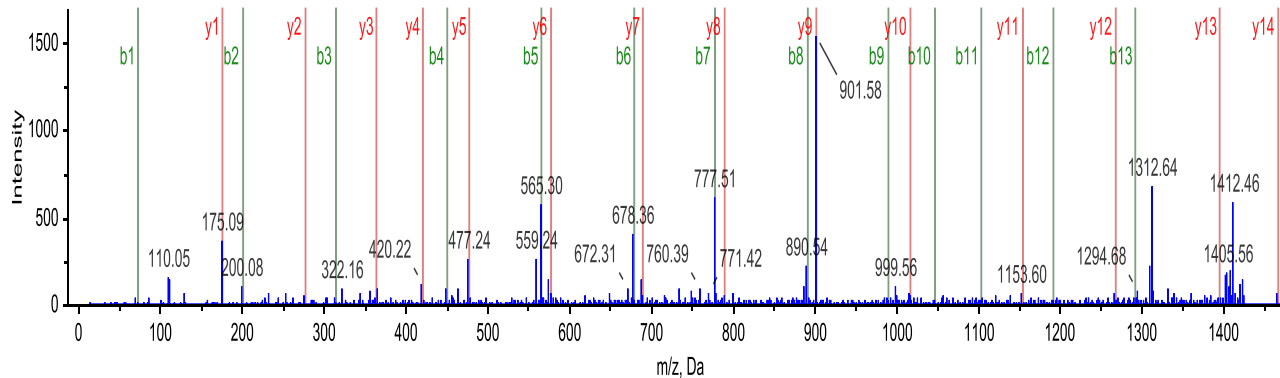


Residue	b	y
A	72.0444	1465.8122
Q	200.103	1394.775
I	313.187	1266.7165
H	450.2459	1153.6324
D	565.2729	1016.5735
L	678.357	901.5465
V	777.4254	788.4625
L	890.5094	689.3941
V	989.5778	576.31
G	1046.5993	477.2416
G	1103.6208	420.2201
S	1190.6528	363.1987
T	1291.7005	276.1666
R	1447.8016	175.119

AQIHDLVLVGGSTR

Prec. MW: 1464.8026 / Δ Mass: -0.0022

Frozen

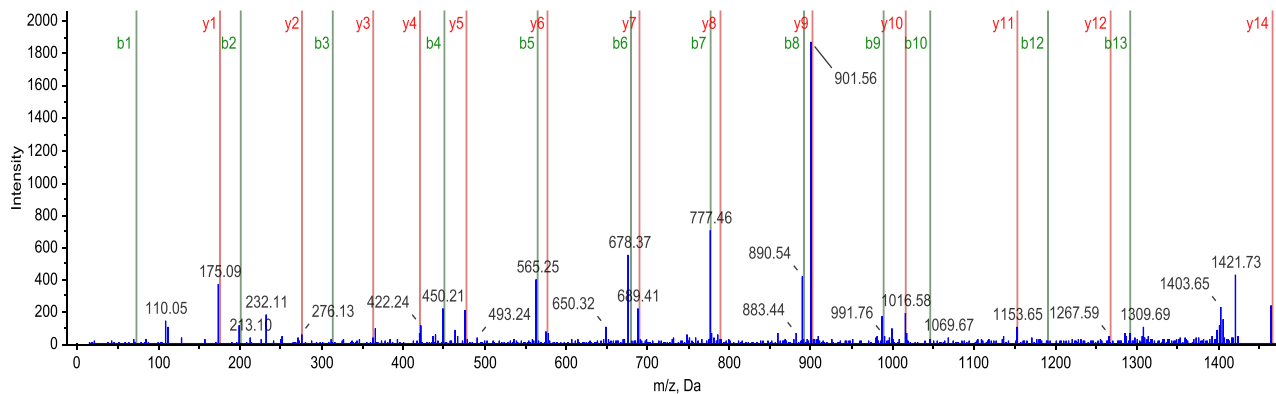


Residue	b	y
A	72.0444	1465.8122
Q	200.103	1394.775
I	313.187	1266.7165
H	450.2459	1153.6324
D	565.2729	1016.5735
L	678.357	901.5465
V	777.4254	788.4625
L	890.5094	689.3941
V	989.5778	576.31
G	1046.5993	477.2416
G	1103.6208	420.2201
S	1190.6528	363.1987
T	1291.7005	276.1666
R	1447.8016	175.119

B, Prostate

Prec. MW: 1464.7973 / Δ Mass: -0.0076

RCL2

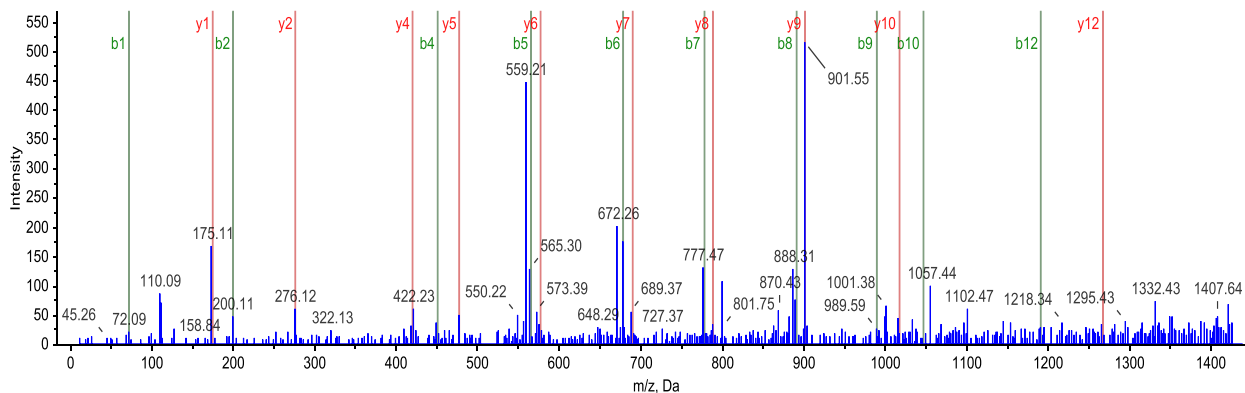


Residue	b	y
A	72.0444	1465.8122
Q	200.103	1394.775
I	313.187	1266.7165
H	450.2459	1153.6324
D	565.2729	1016.5735
L	678.357	901.5465
V	777.4254	788.4625
L	890.5094	689.3941
V	989.5778	576.31
G	1046.5993	477.2416
G	1103.6208	420.2201
S	1190.6528	363.1987
T	1291.7005	276.1666
R	1447.8016	175.119

AQIHDLVLVGGSTR

Prec. MW: 1464.8143 / Δ Mass: 0.0094

Frozen

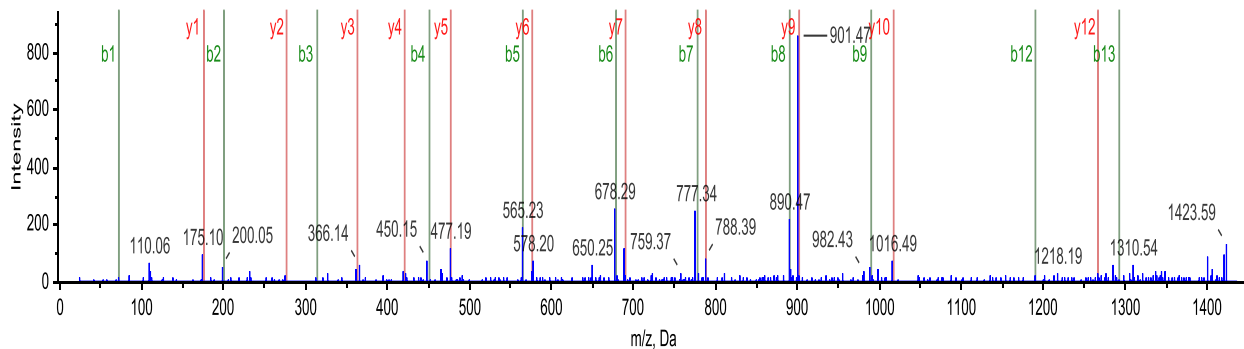


Residue	b	y
A	72.0444	1465.8122
Q	200.103	1394.775
I	313.187	1266.7165
H	450.2459	1153.6324
D	565.2729	1016.5735
L	678.357	901.5465
V	777.4254	788.4625
L	890.5094	689.3941
V	989.5778	576.31
G	1046.5993	477.2416
G	1103.6208	420.2201
S	1190.6528	363.1987
T	1291.7005	276.1666
R	1447.8016	175.119

C, Breast

Prec. MW: 1464.8087 / Δ Mass: 0.0039

RCL2

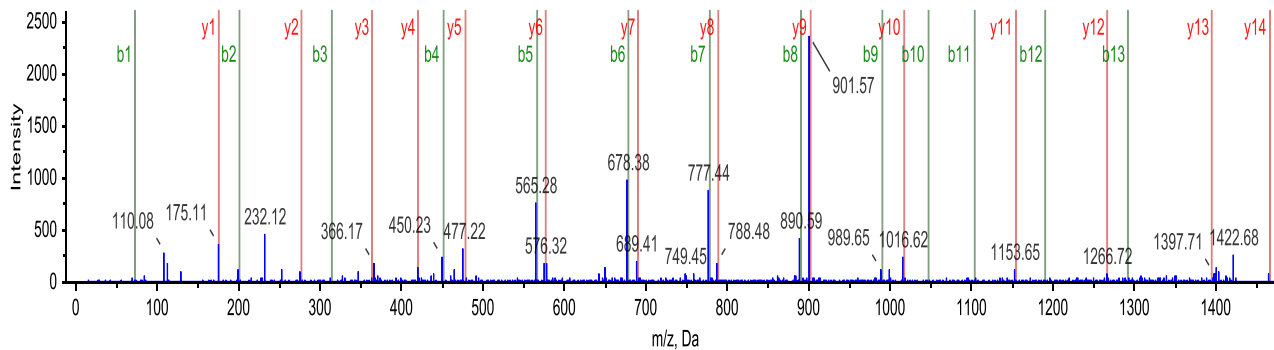


Residue	b	y
A	72.0444	1465.8122
Q	200.103	1394.775
I	313.187	1266.7165
H	450.2459	1153.6324
D	565.2729	1016.5735
L	678.357	901.5465
V	777.4254	788.4625
L	890.5094	689.3941
V	989.5778	576.31
G	1046.5993	477.2416
G	1103.6208	420.2201
S	1190.6528	363.1987
T	1291.7005	276.1666
R	1447.8016	175.119

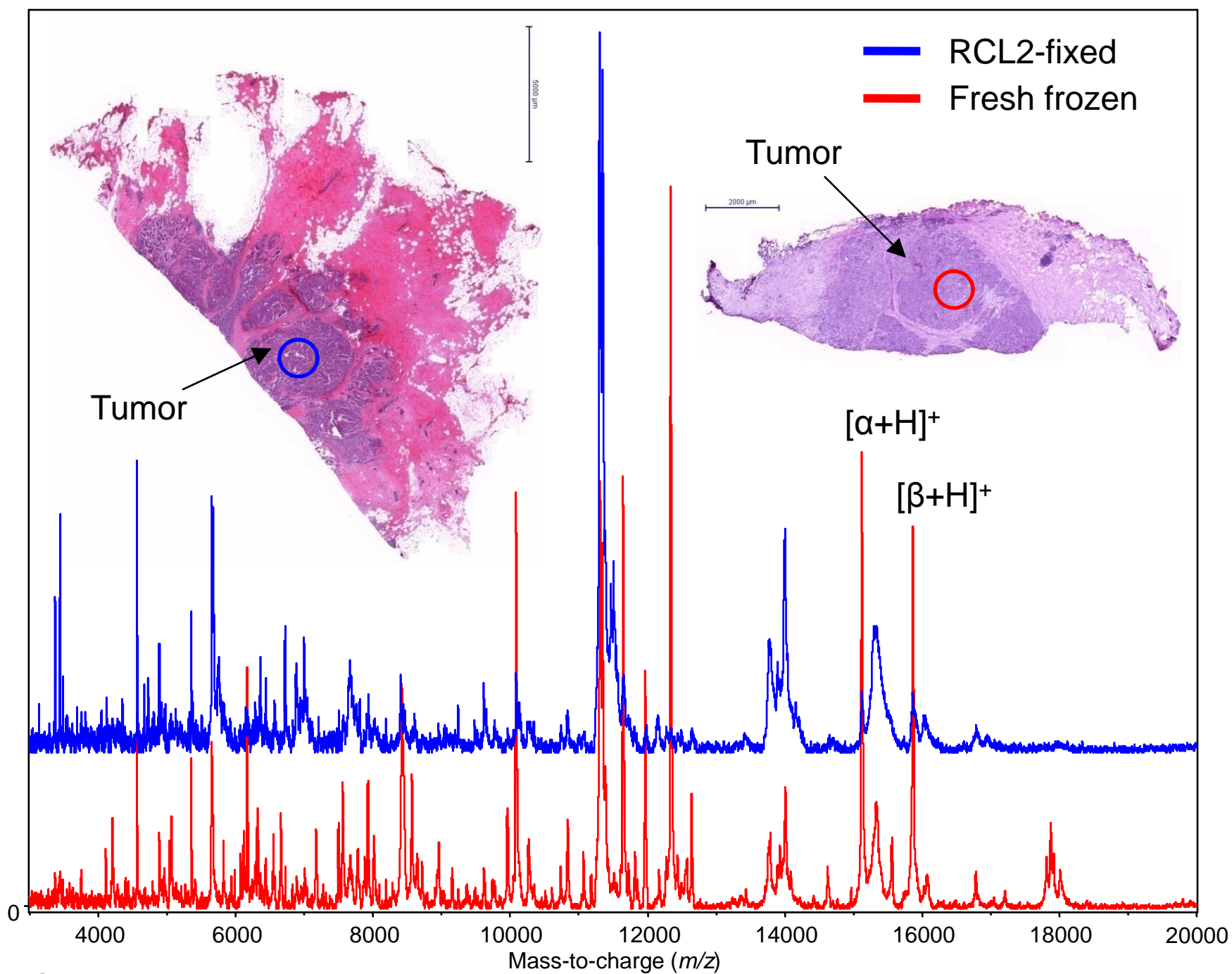
AQIHDLVLVGGSTR

Prec. MW: 1464.8053 / Δ Mass: 0.0005

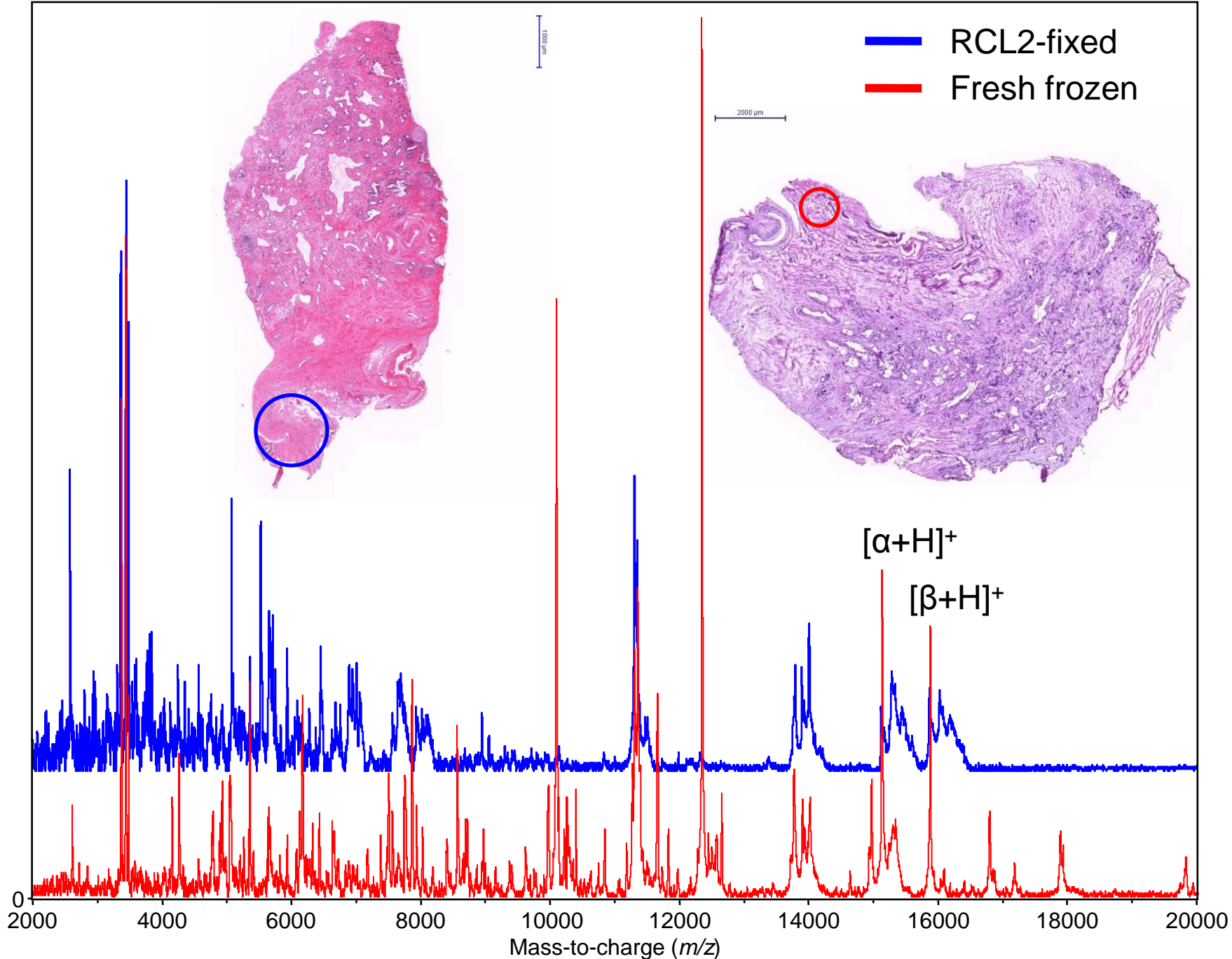
Frozen



Residue	b	y
A	72.0444	1465.8122
Q	200.103	1394.775
I	313.187	1266.7165
H	450.2459	1153.6324
D	565.2729	1016.5735
L	678.357	901.5465
V	777.4254	788.4625
L	890.5094	689.3941
V	989.5778	576.31
G	1046.5993	477.2416
G	1103.6208	420.2201
S	1190.6528	363.1987
T	1291.7005	276.1666
R	1447.8016	175.119



Supplemental Figure 2A



Supplemental Figure 2B