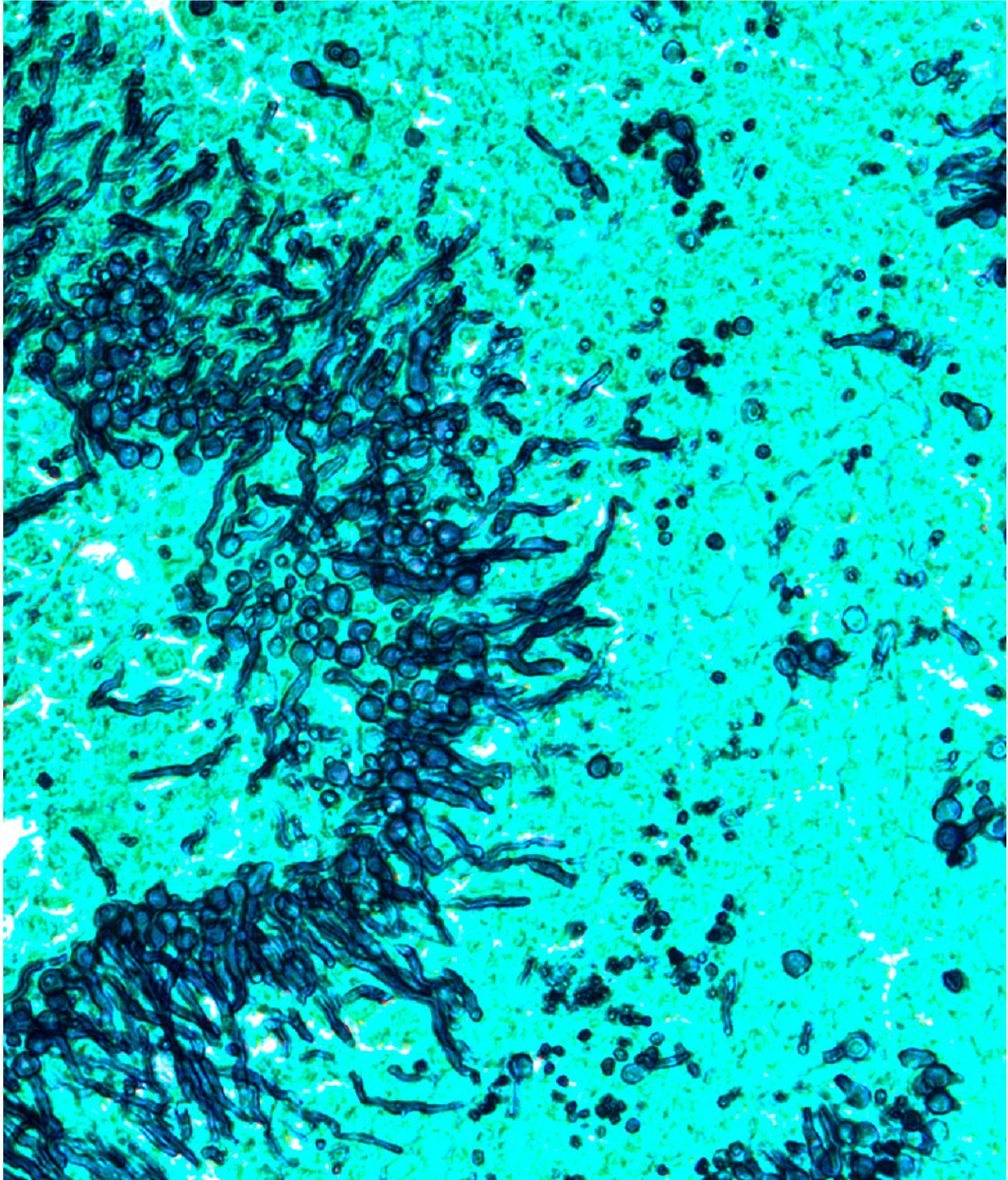


**Figure S1. Lung section from cyclophosphamide/cortisone acetate treated mouse 24 hours after inoculation with *Af293* conidia**  
Conidial germination with invasion of lung parenchyma are seen (Grocott-Gomori methenamine silver; top,  $\times 400$ ; bottom,  $\times 200$ ).





**Figure S2.** Thigh tissue from a cyclophosphamide treated mouse 5 days after subcutaneous injection of *ΔlaeA* conidia, showing conidial germination and extensive invasion of thigh tissue by elongated hyphae (Grocott-Gomori methenamine silver, × 200)