

Supplemental Figure Legends

Supplemental Figure 1. Treg number does not differ between B6, B6/*Ipr*, IL-23R^{-/-}B6 and IL-23R^{-/-}B6/*Ipr*. The different mouse strains were sacrificed and the splenocytes were extracted and stained for CD4, CD25, and Foxp3 (E-Biosciences Treg staining kit). Here we show one representative out of four independent experiments.

Supplemental Figure 2. Lymphocyte subsets do not differ between B6 and IL-23R^{-/-}B6 mice. B6 and IL-23R^{-/-}B6 (n=4 for each group) mice were sacrificed and the lymph node cells were extracted and stained for CD3, CD4, CD8. One representative experiment is shown here.

Supplemental Figure 3. Lymphocyte subtypes do not differ between B6 and IL-23R^{-/-}B6 mice. B6 and IL-23R^{-/-}B6 (n=4 for each group) mice were sacrificed and the lymph node cells were extracted and stained for CD3, CD4, CD8 and IL-17A (left panel) or IFN- γ (right panel). One out of the four representative experiments is depicted here.

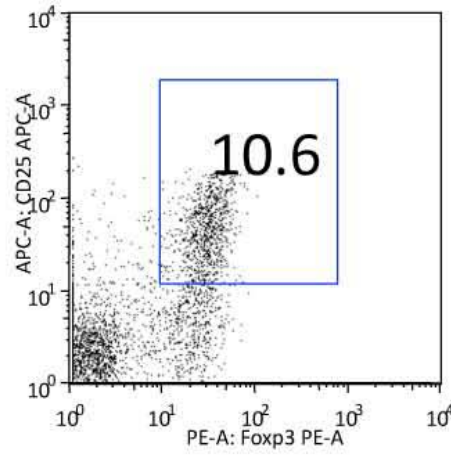
Supplemental Figure 4. Anti-IL-23 antibody treatment decreases the expression of IL-17A. 12-week old MRL/*Ipr* mice were injected with 20 μ gr of anti-IL-23R non-activating antibody (generous gift from BD biosciences) or control IgG intraperitoneally, three times a week for four weeks. At the end of the treatment the mice were sacrificed and the lymph node cells were extracted and stained for CD3, CD4, CD8 and IL-17A following the protocol for intracellular staining (Materials and Methods). The expression levels of IL-17A in T cells from 3 different mice per group are depicted here.

Supplemental Fig. 1

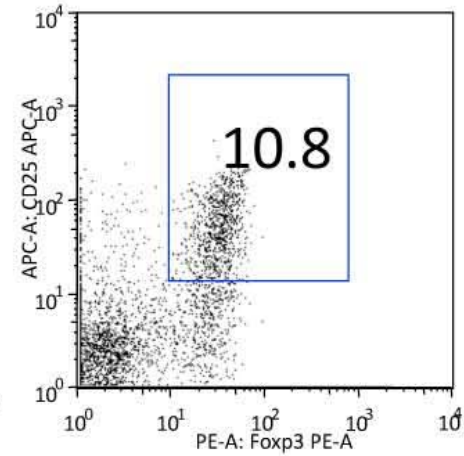
Gate on CD4+

CD25 ↑
FoXP3 →

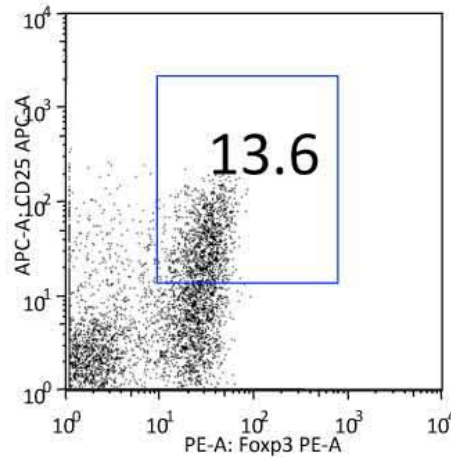
B6



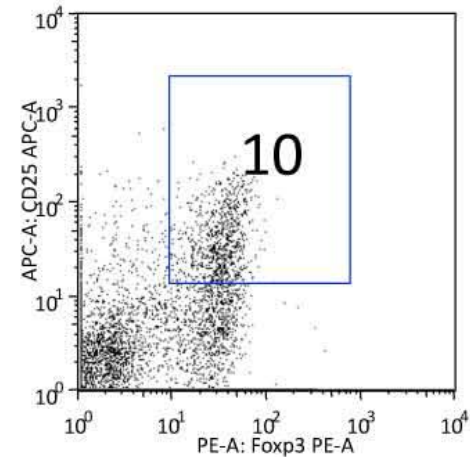
IL-23R-/- B6



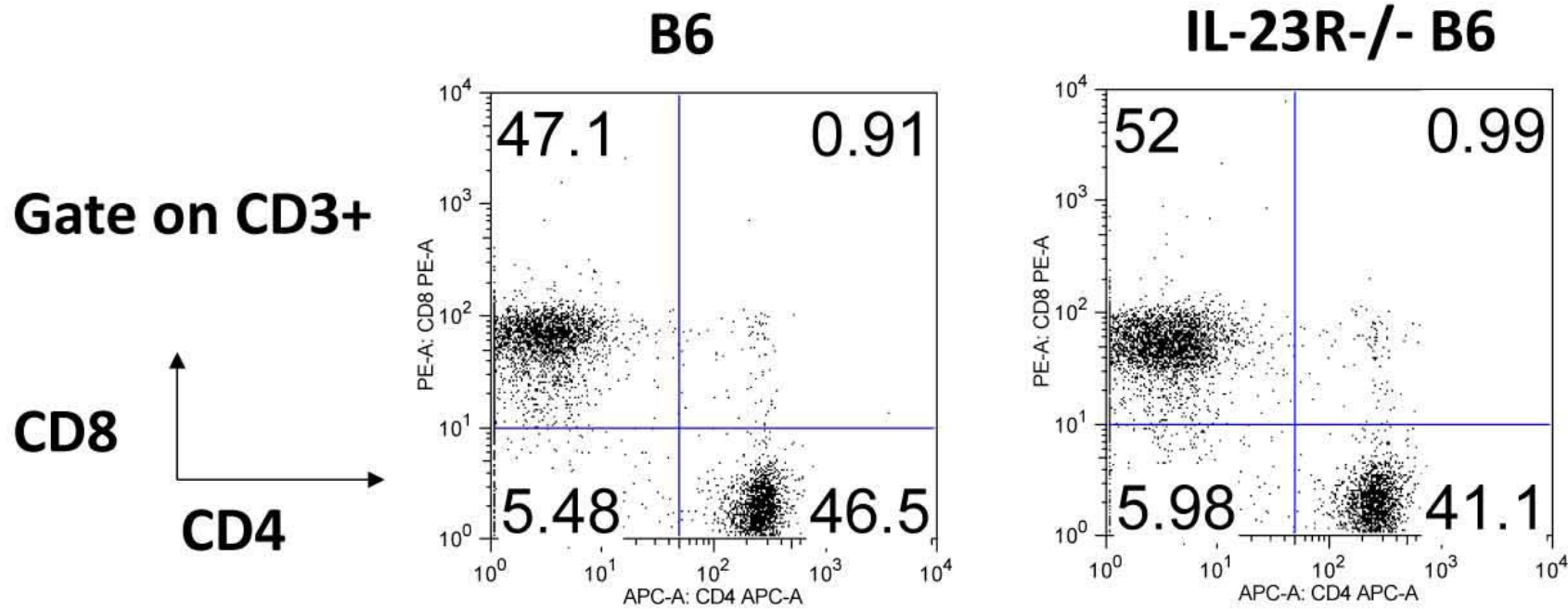
B6/*lpr*



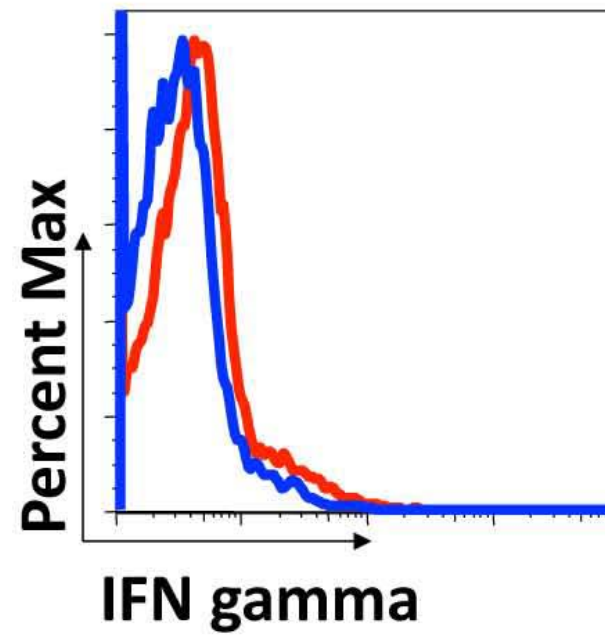
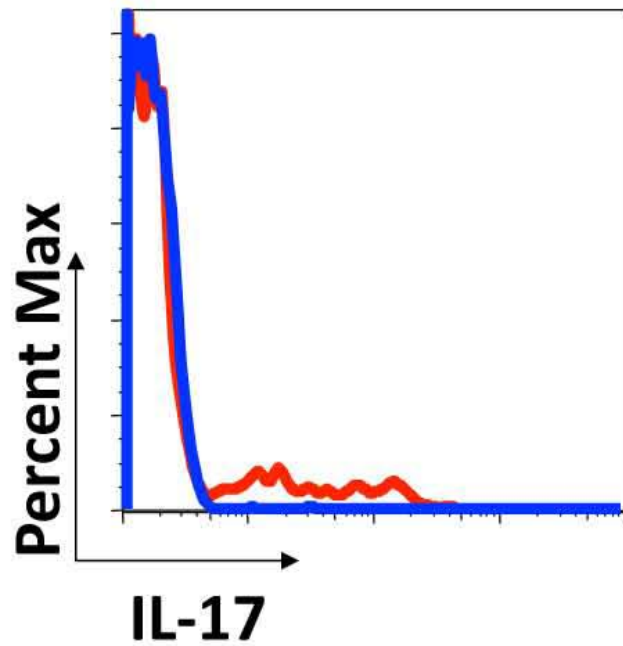
IL-23R-/- B6/*lpr*



Supplemental
Fig. 2



Supplemental
Fig. 3



Gate on CD3+CD4-CD8-

— B6
— IL-23R-/- B6

Control IgG

Anti-IL-23

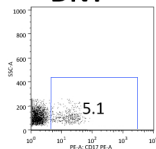
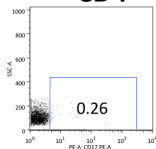
CD4

DNT

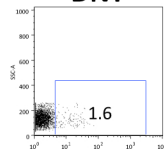
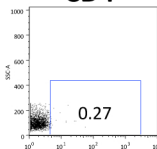
CD4

DNT

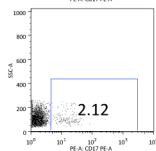
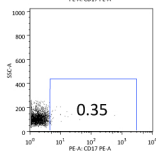
Mouse 1



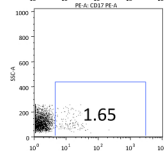
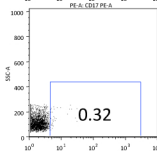
Mouse 4



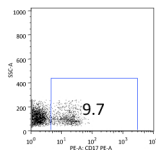
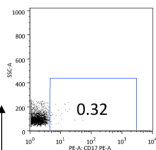
Mouse 2



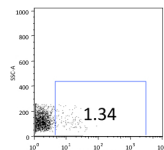
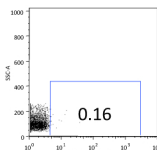
Mouse 5



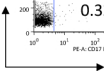
Mouse 3



Mouse 6



SSC



IL17