

# Supporting Information

An Efficient System For the Pd-Catalyzed Cross-Coupling of Amides and Aryl Chlorides

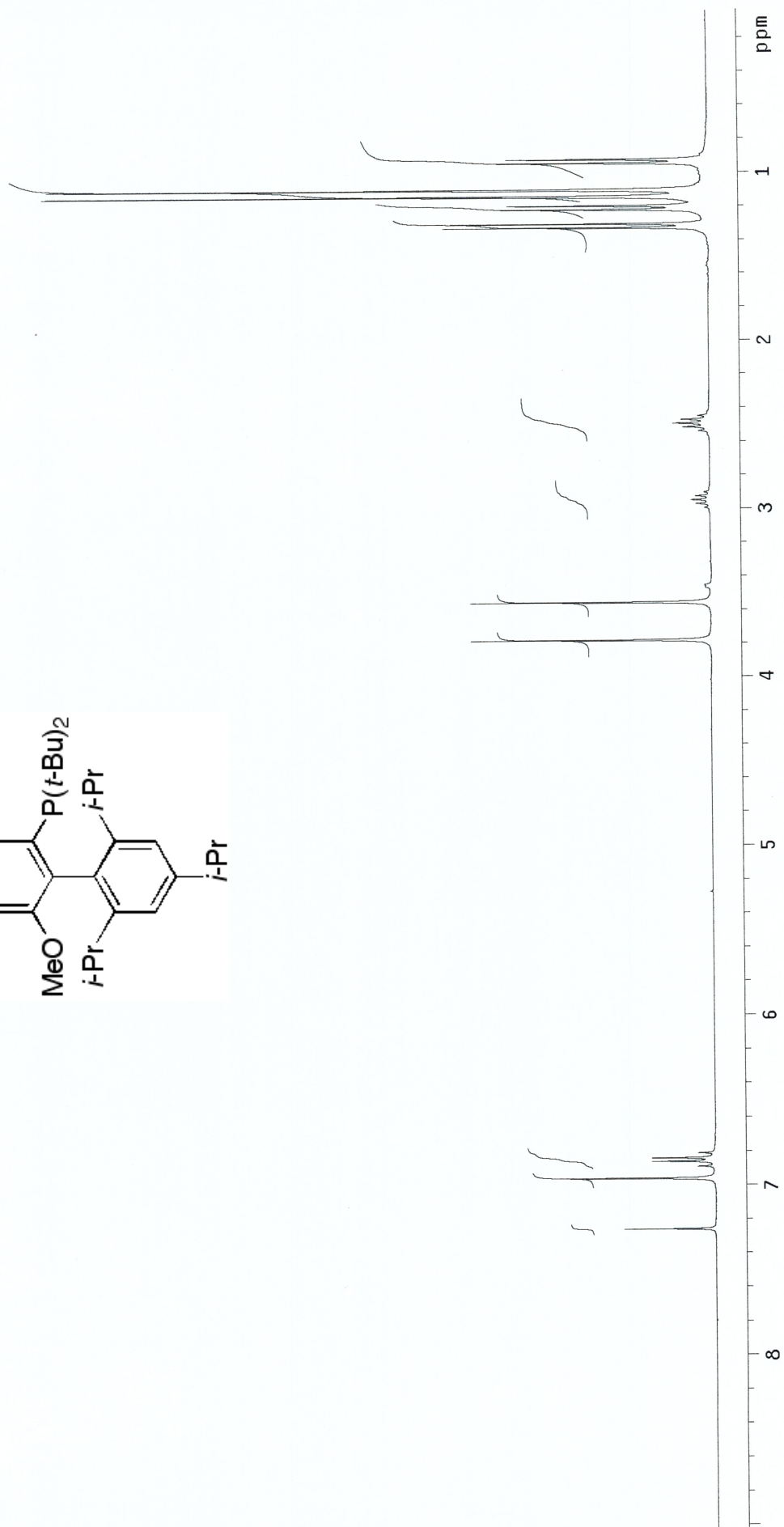
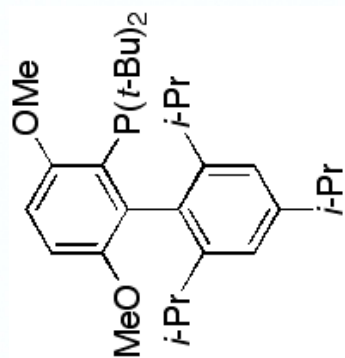
Brett P. Fors, Karin Dooleweerd, Qingle Zeng, and Stephen L. Buchwald\*

*Department of Chemistry, Massachusetts Institute of Technology  
Cambridge, Massachusetts 02139*

\*Corresponding author. Email: [sbuchwal@mit.edu](mailto:sbuchwal@mit.edu) (S.L. Buchwald).

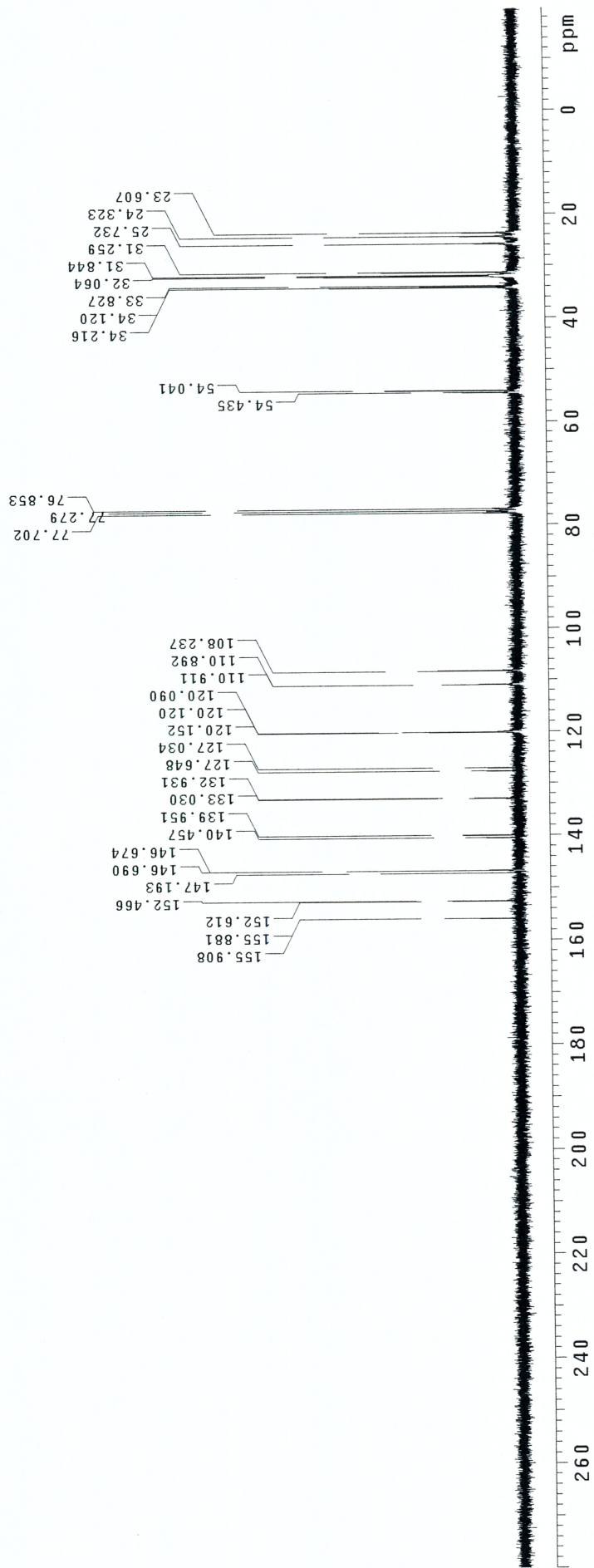
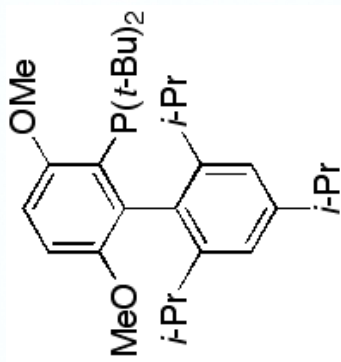
BF-VI-tbuBrettPhos

Pulse Sequence: s2bu1



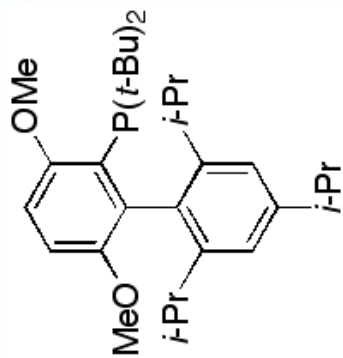
BF-VI-tbuBrettPhos-13C

Pulse Sequence: s2pu1



BF-VI-tbuBrettPhos-31P

Pulse Sequence: s2bu1



34.781

ppm

-60

-40

-20

0

20

40

60

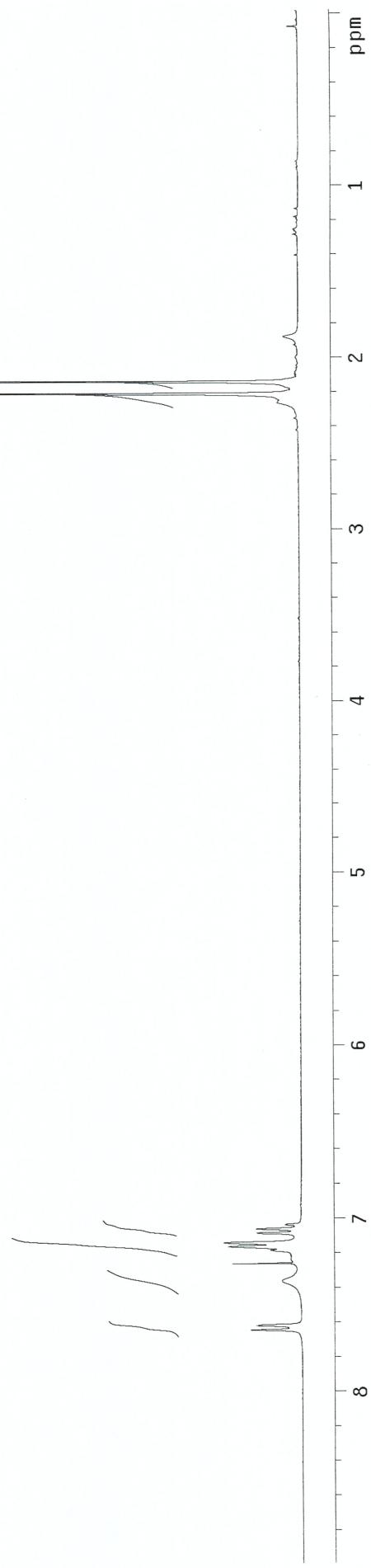
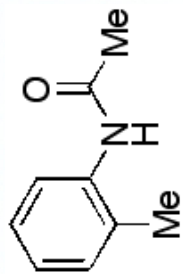
80

100



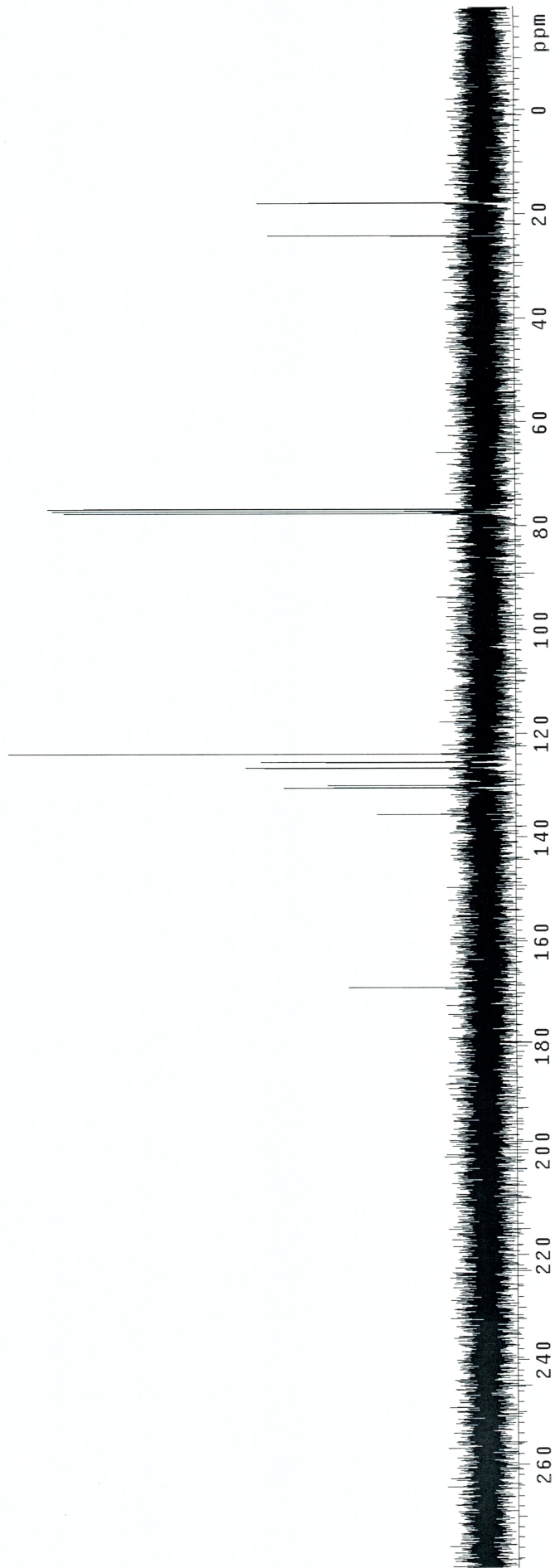
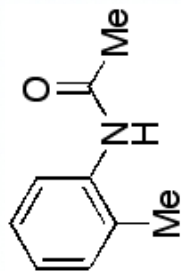
KD77

Pulse Sequence: s2pu1



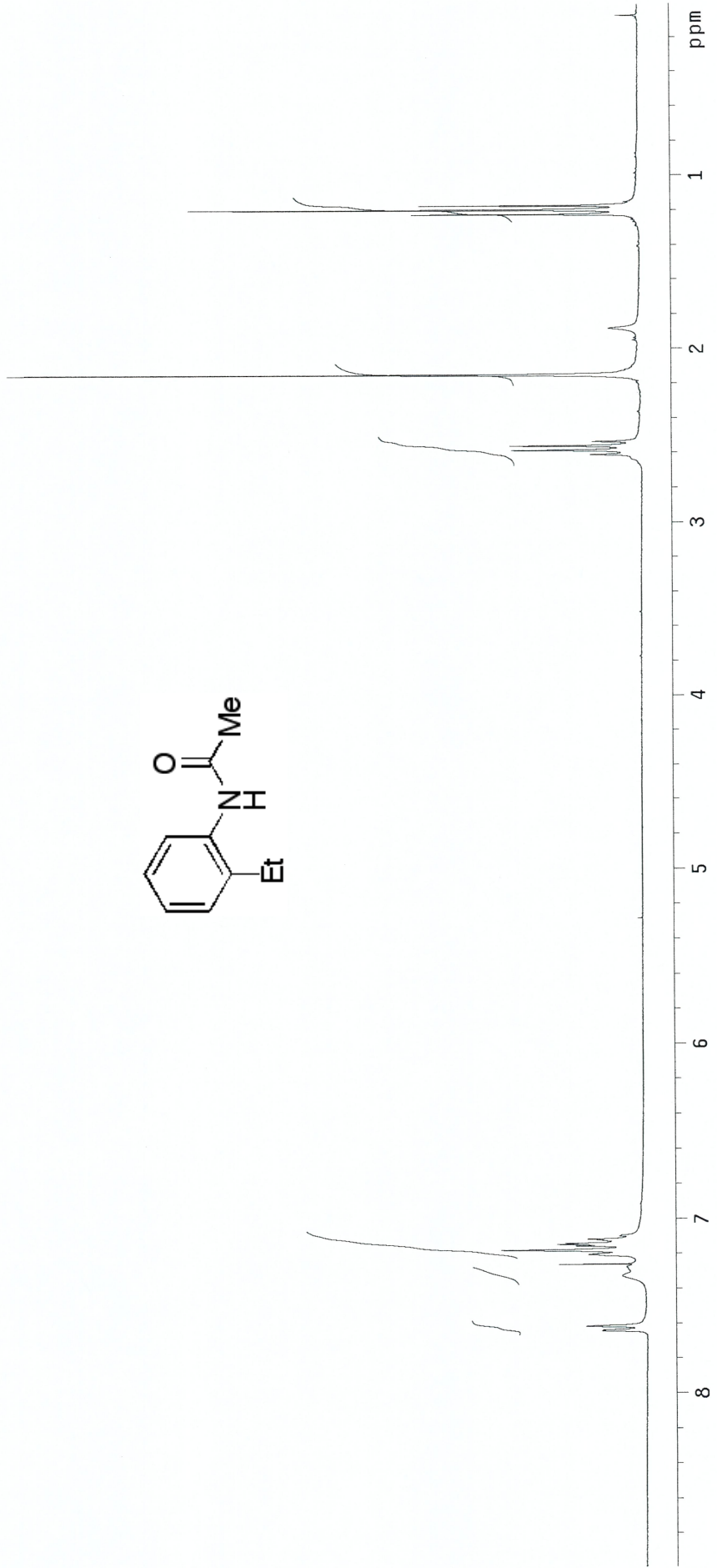
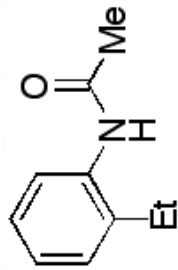
KD77

Pulse Sequence: s2pu1



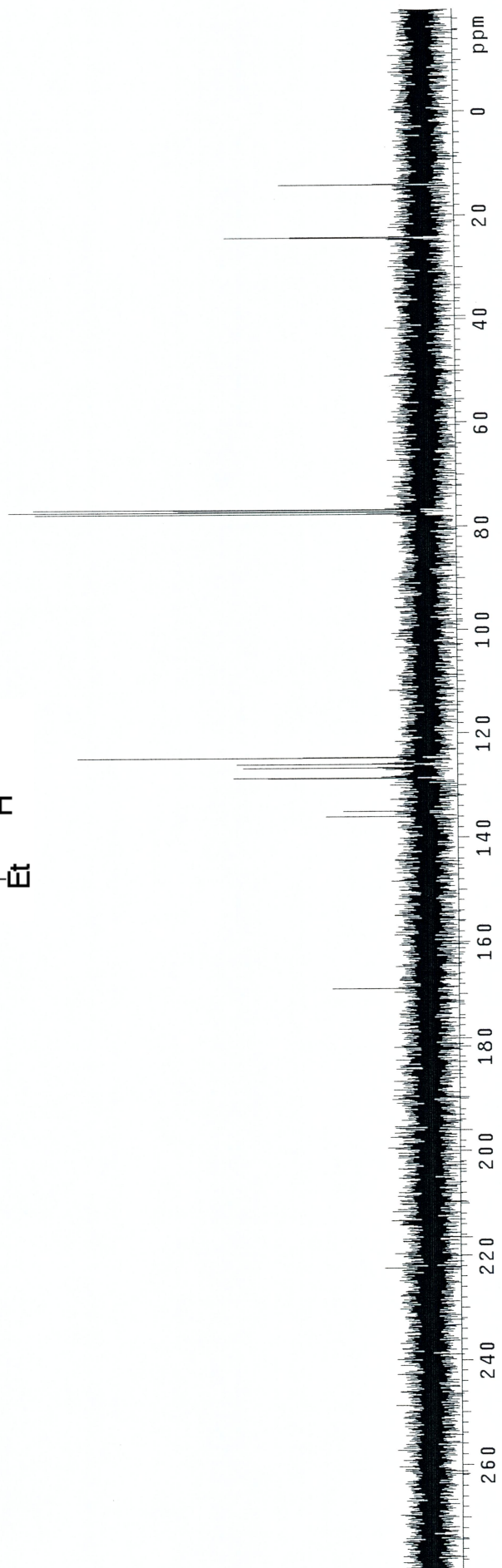
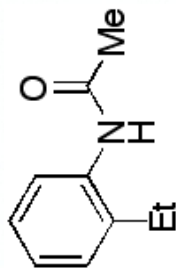
KD110

Pulse Sequence: s2pu1



KD110

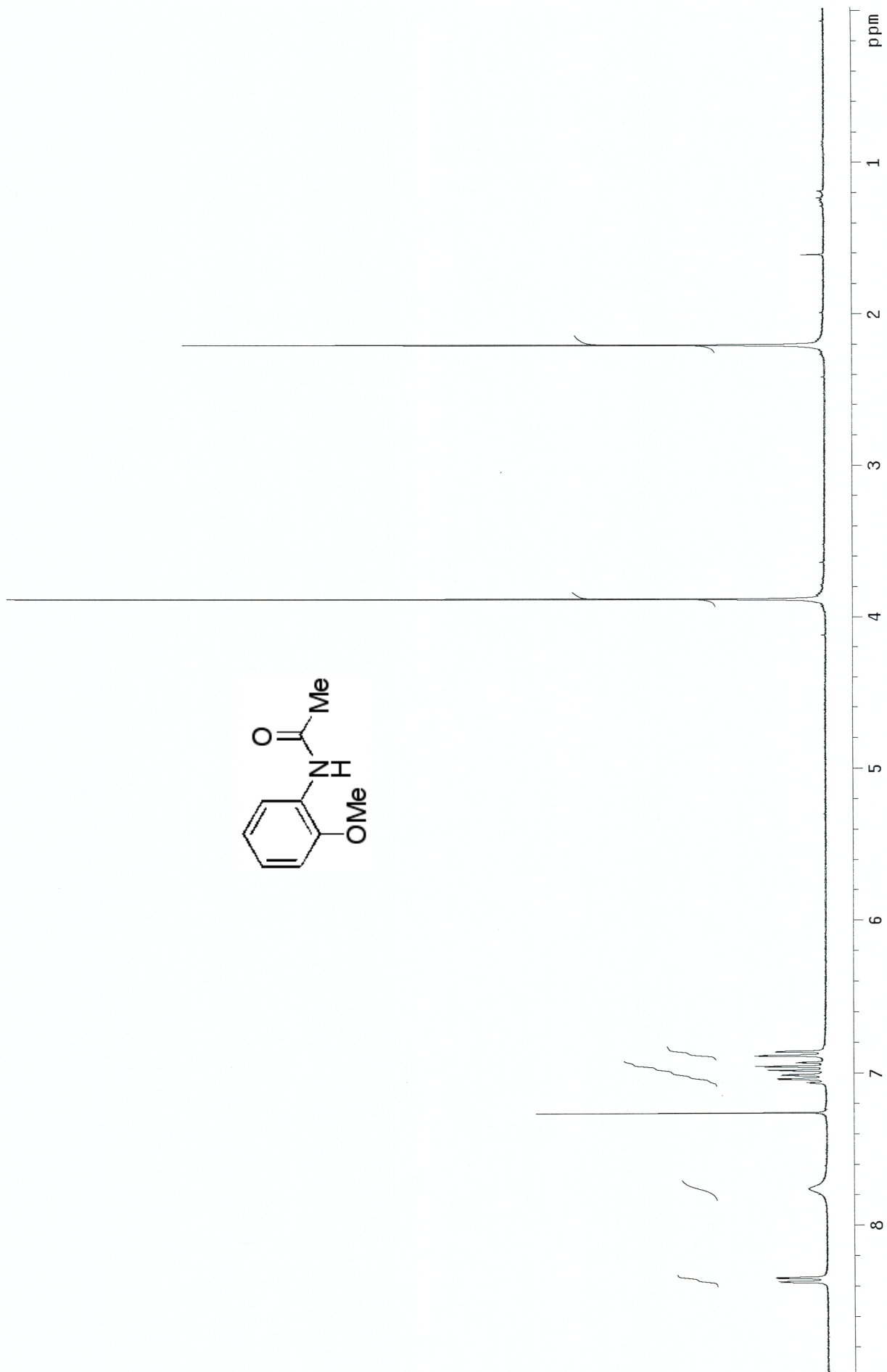
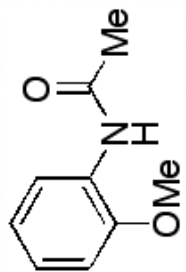
Pulse Sequence: s2pu1





KD107B

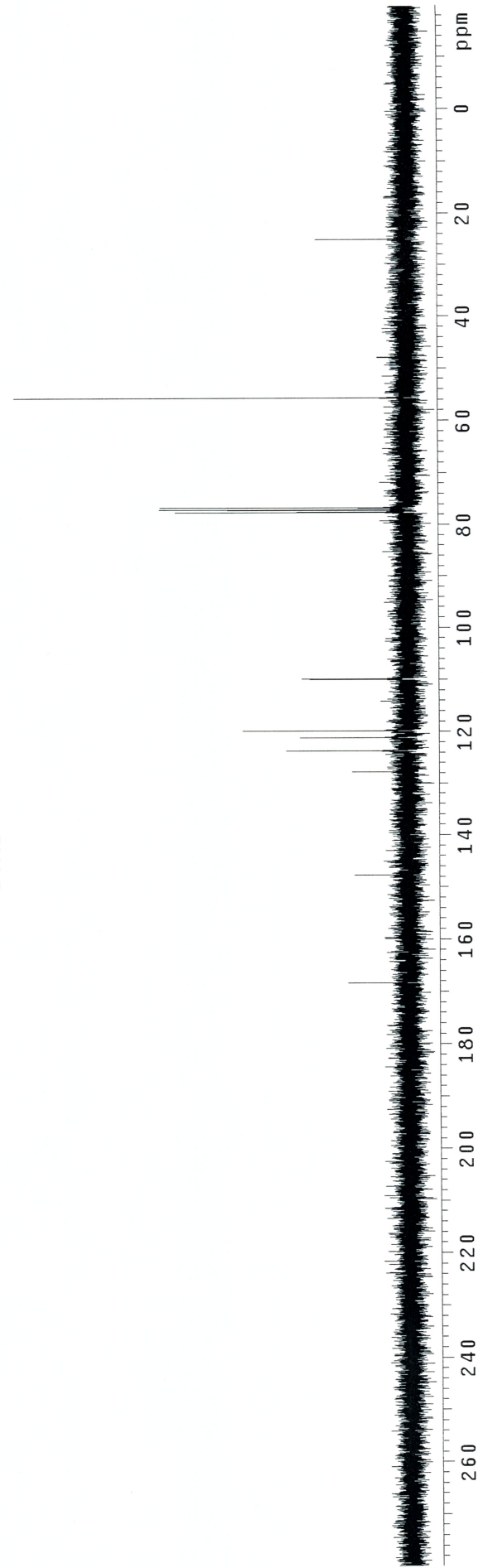
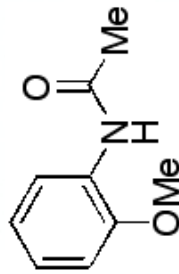
Pulse Sequence: s2pu1





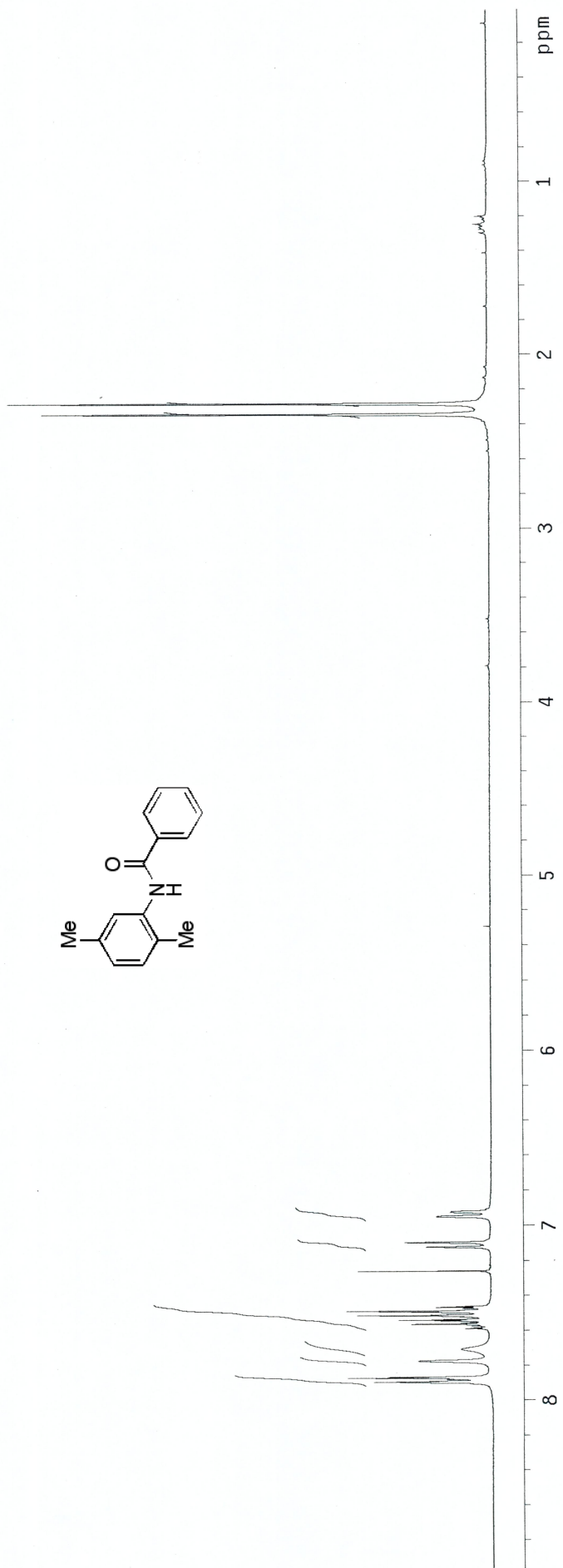
KD103

Pulse Sequence: s2pu1



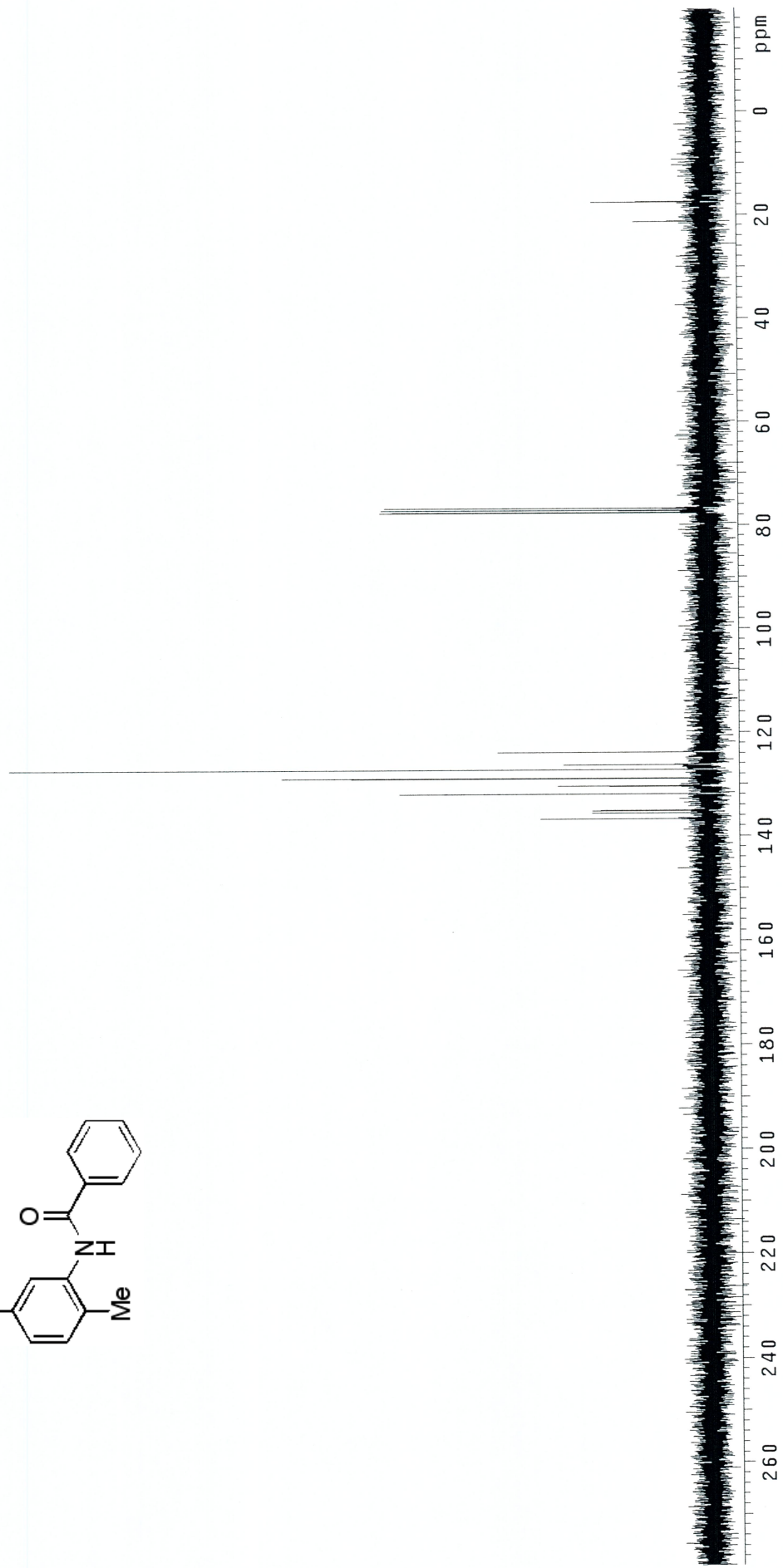
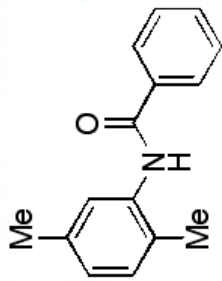
KD75

Pulse Sequence: s2pu1



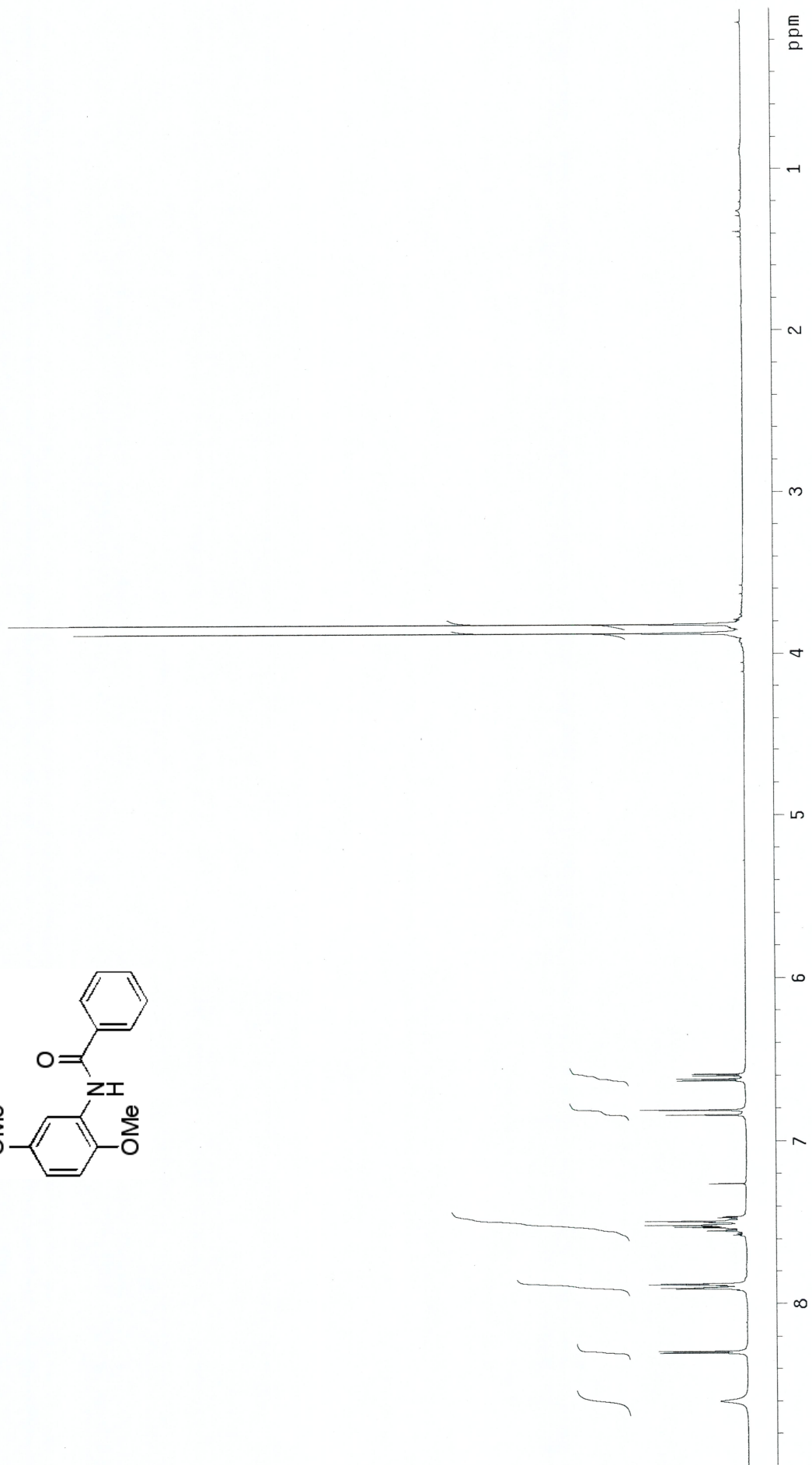
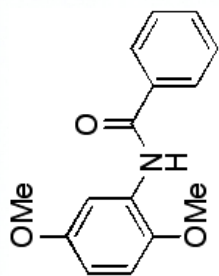
KD75

Pulse Sequence: s2pu1



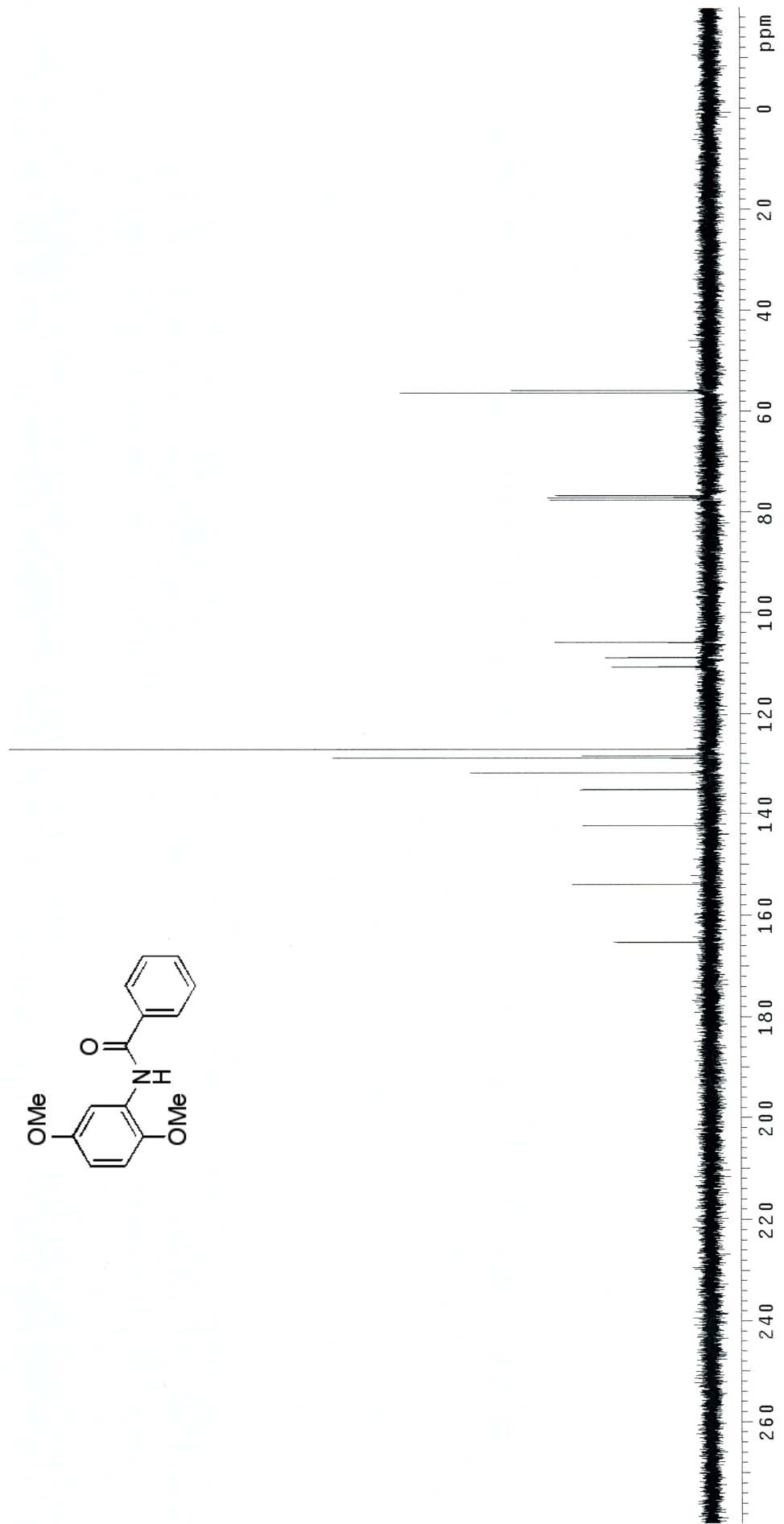
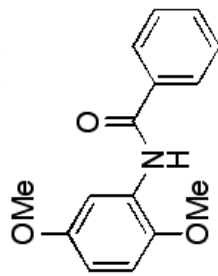
KD97A

Pulse Sequence: s2pu1



KD97A

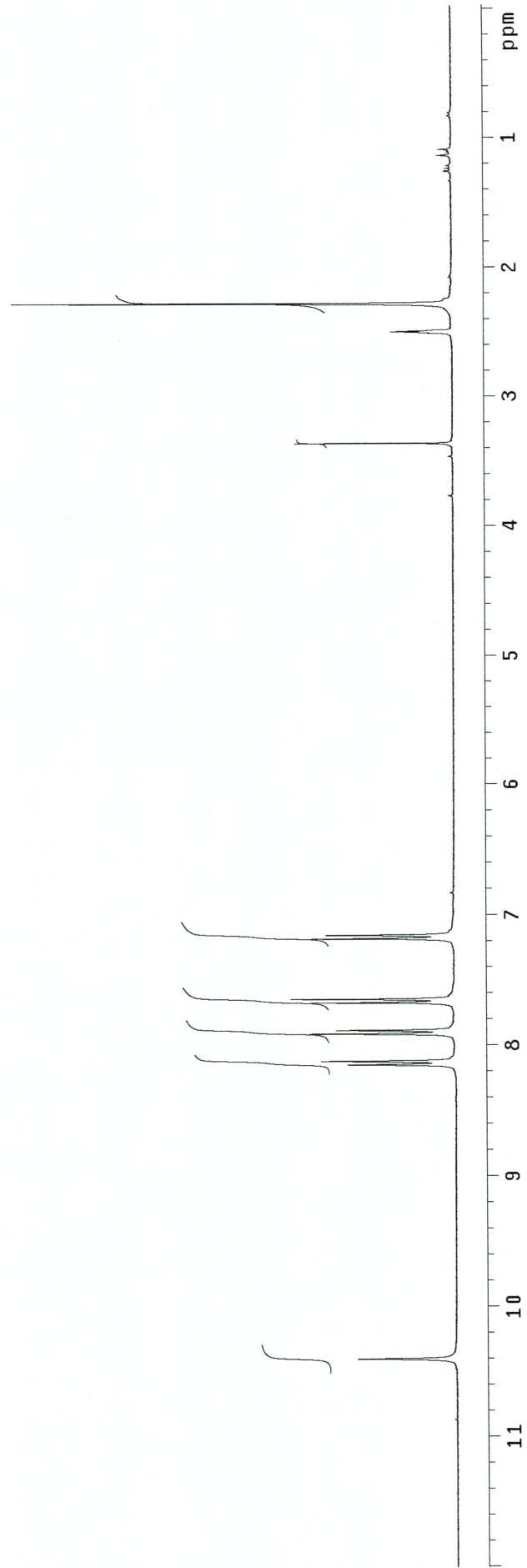
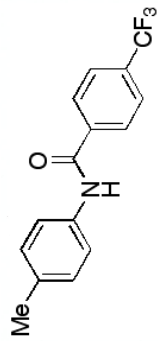
Pu1se Sequence: s2pu1





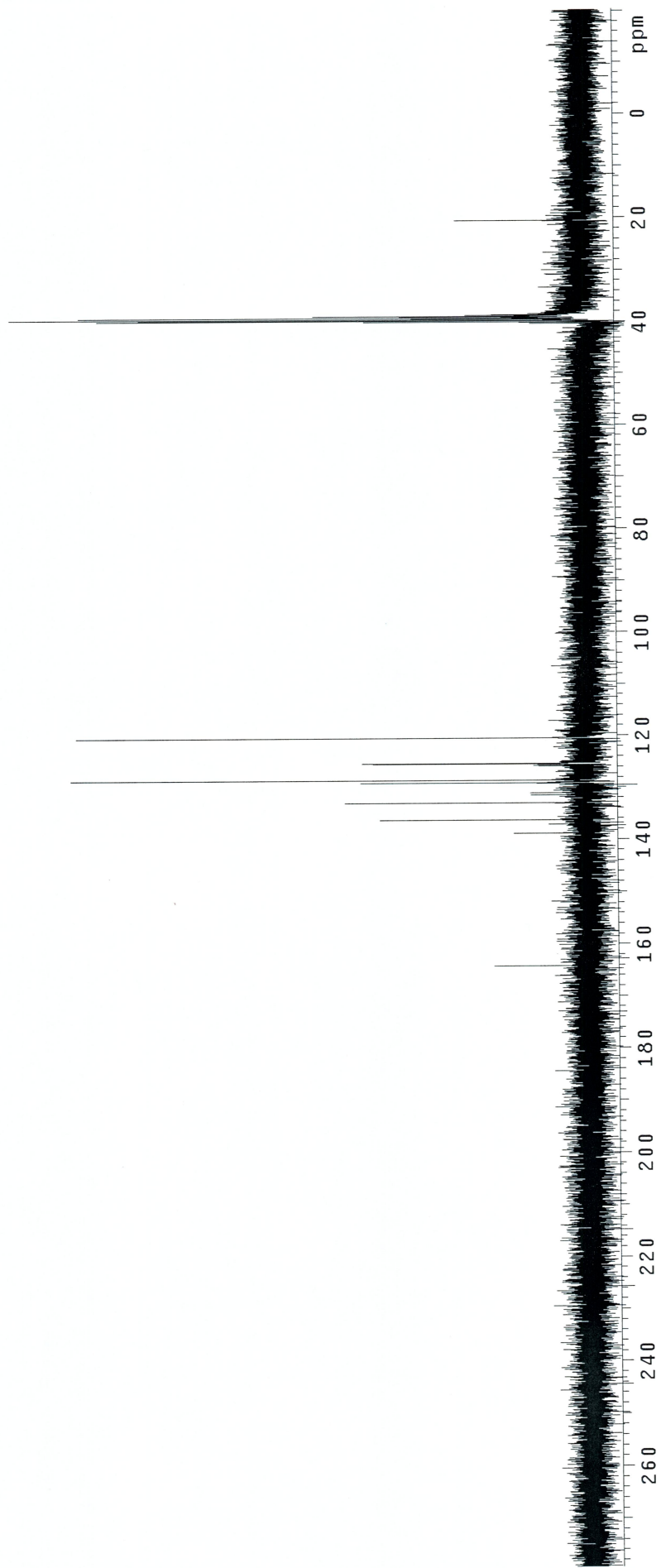
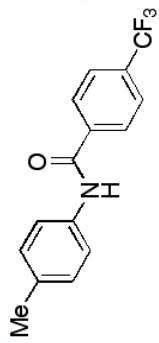
K0129

Pulse Sequence: s2pu1



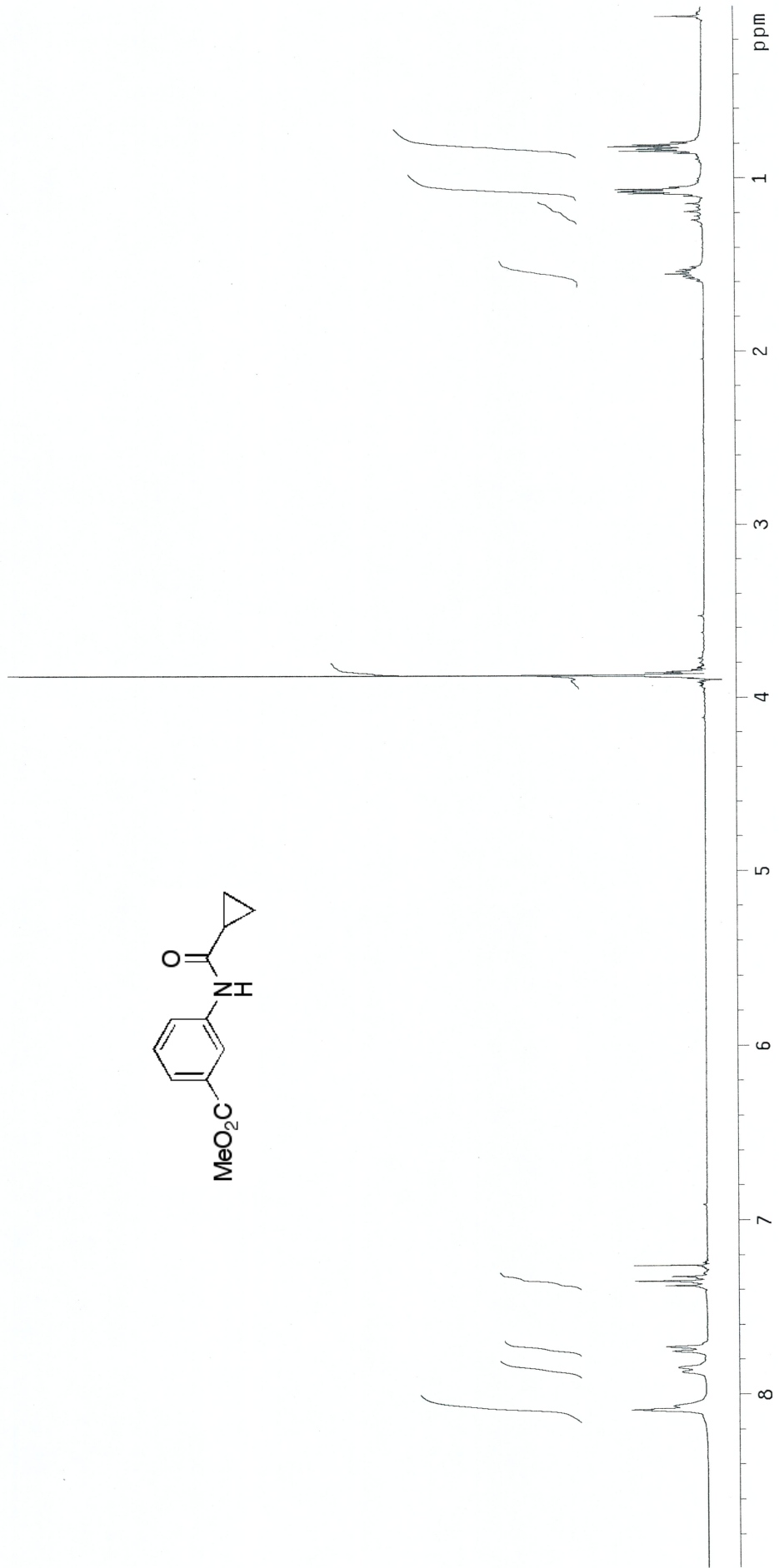
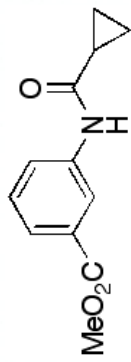
KD129

Pulse Sequence: s2pu1



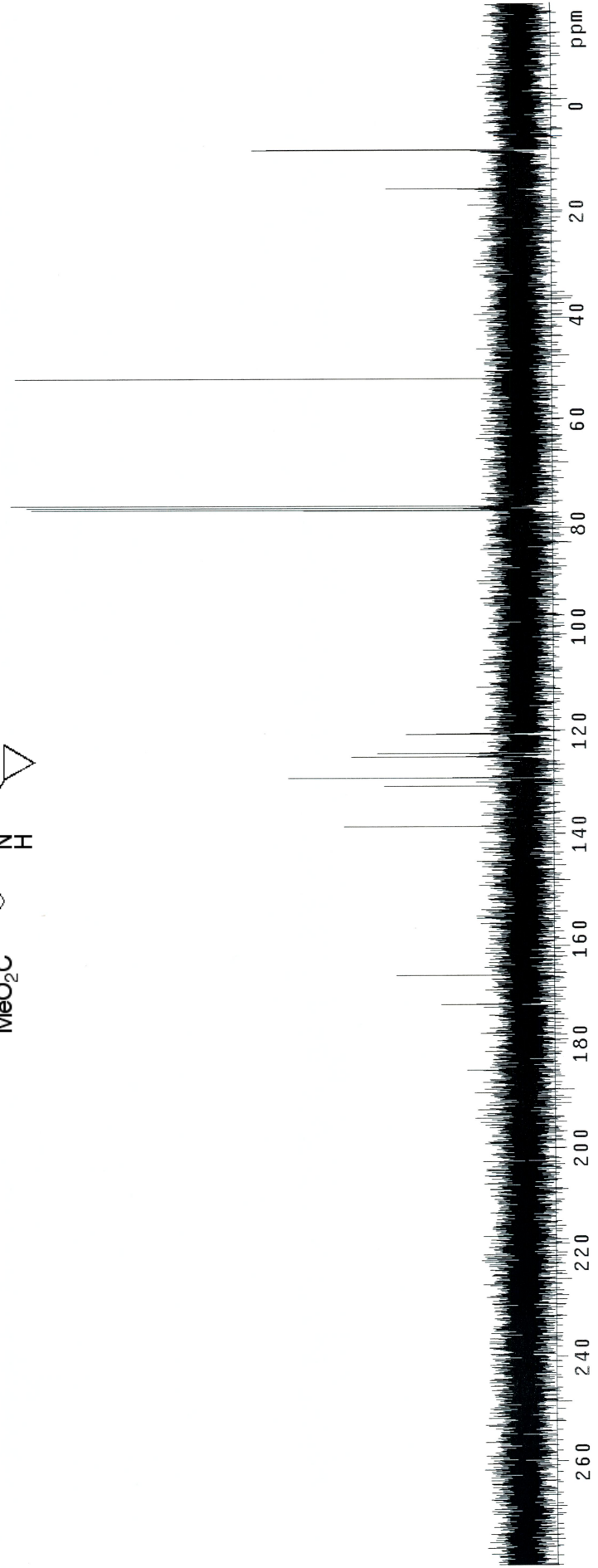
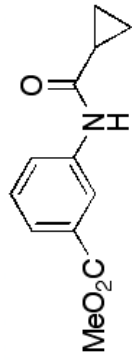
KD95

Pulse Sequence: s2pu1



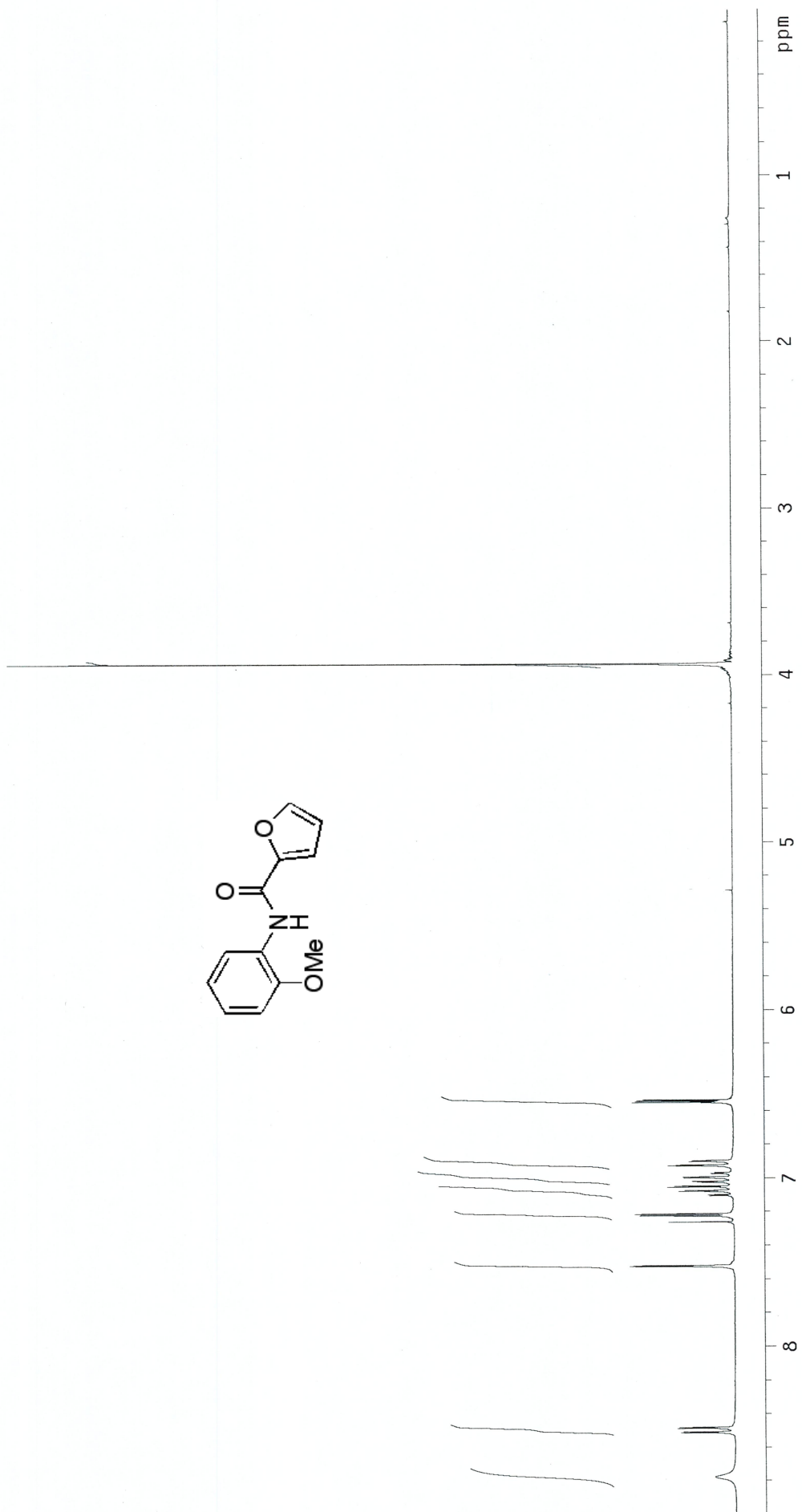
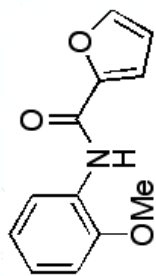
K095

Pulse Sequence: s2pu1



KD106

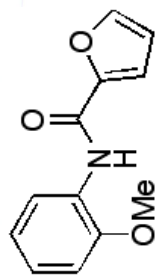
Pulse Sequence: s2pu1



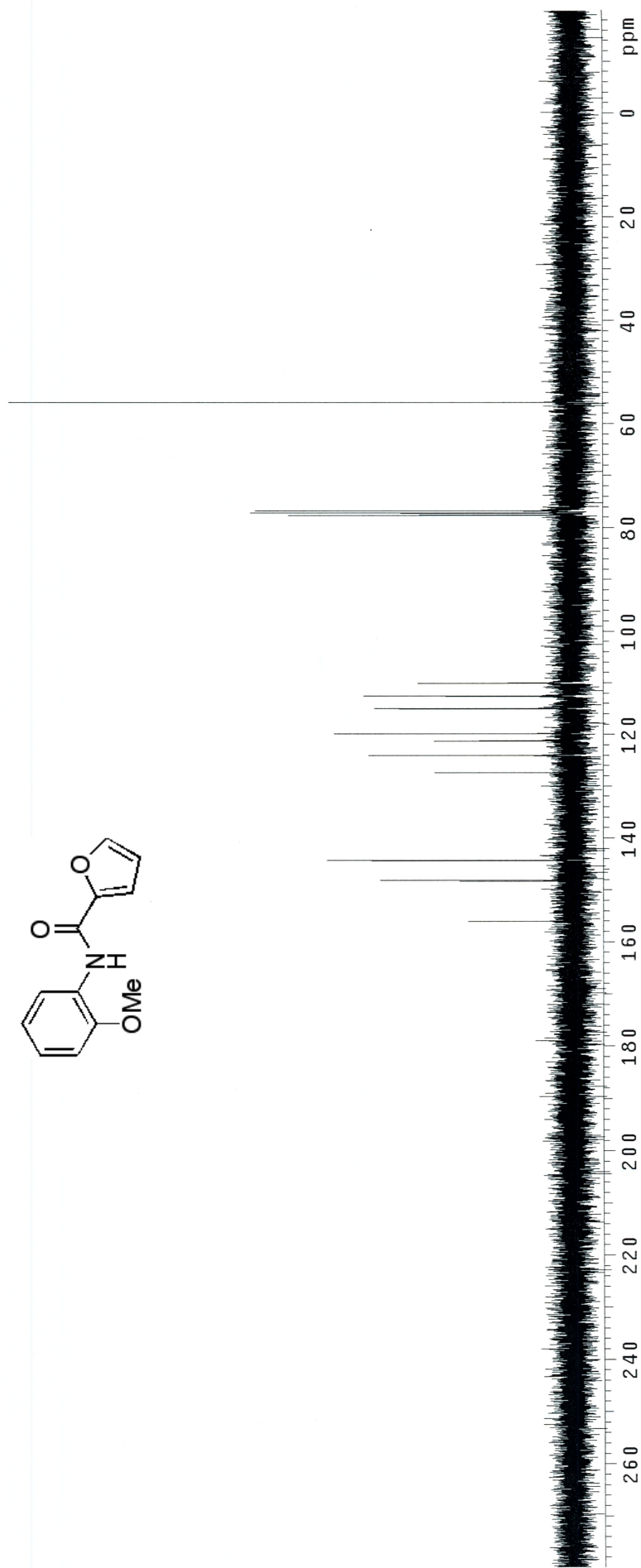


KD106

Pulse Sequence: s2pu1

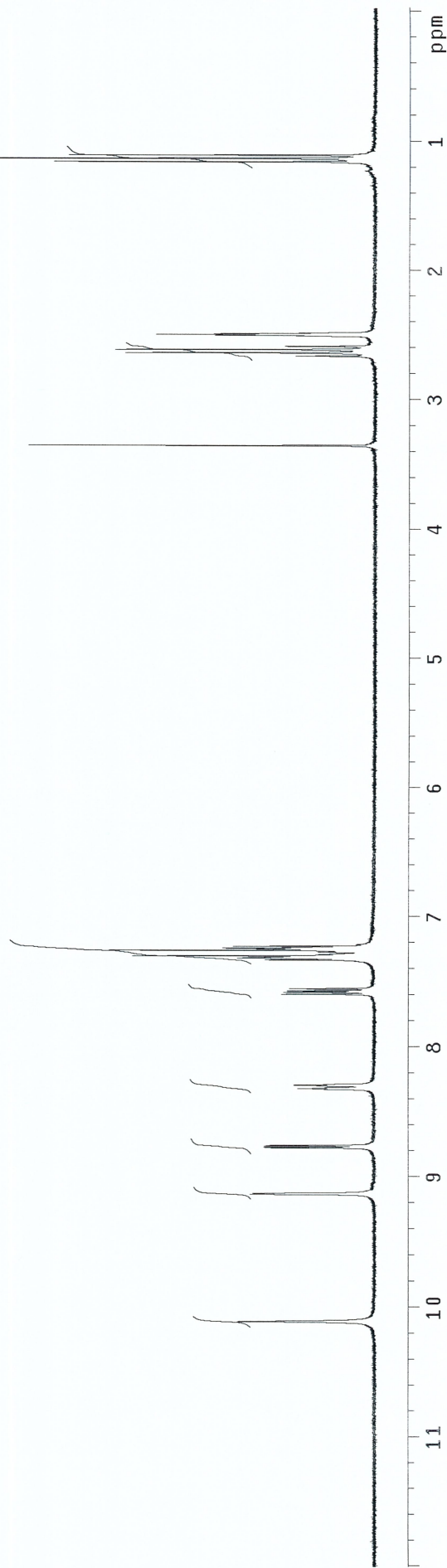
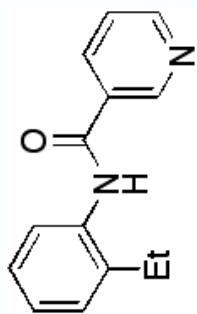


SI 20



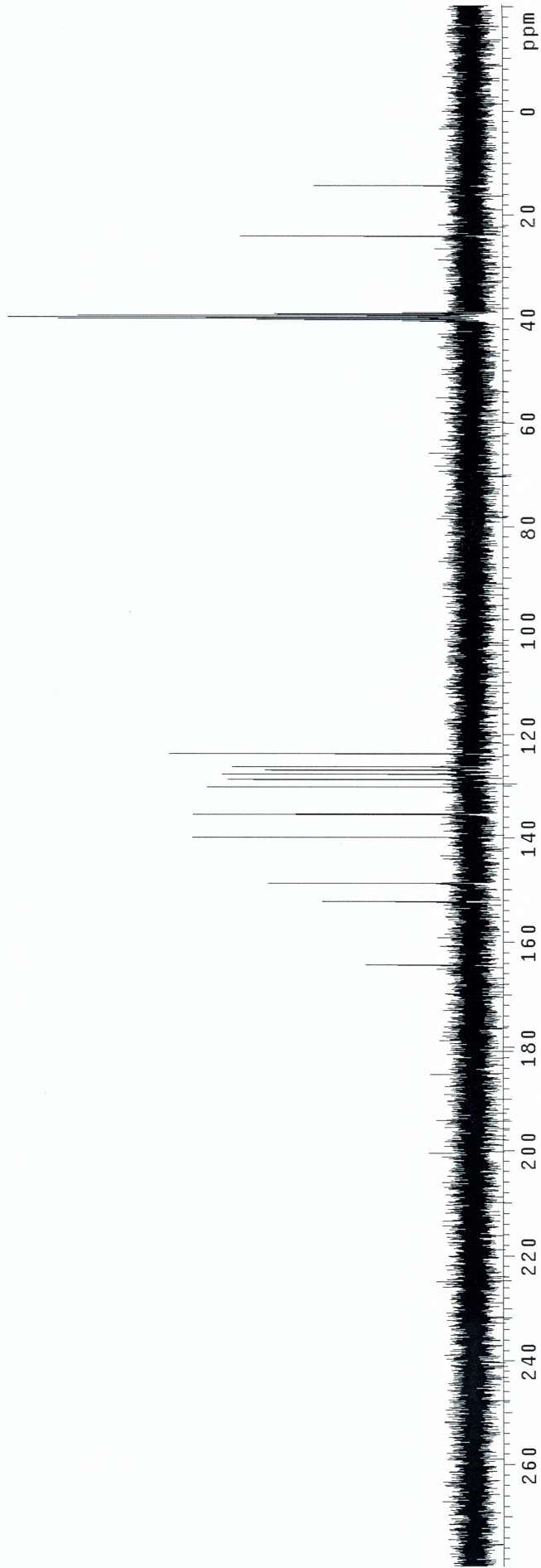
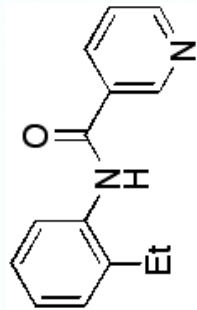
KD125B

PuTse Sequence: s2pu1

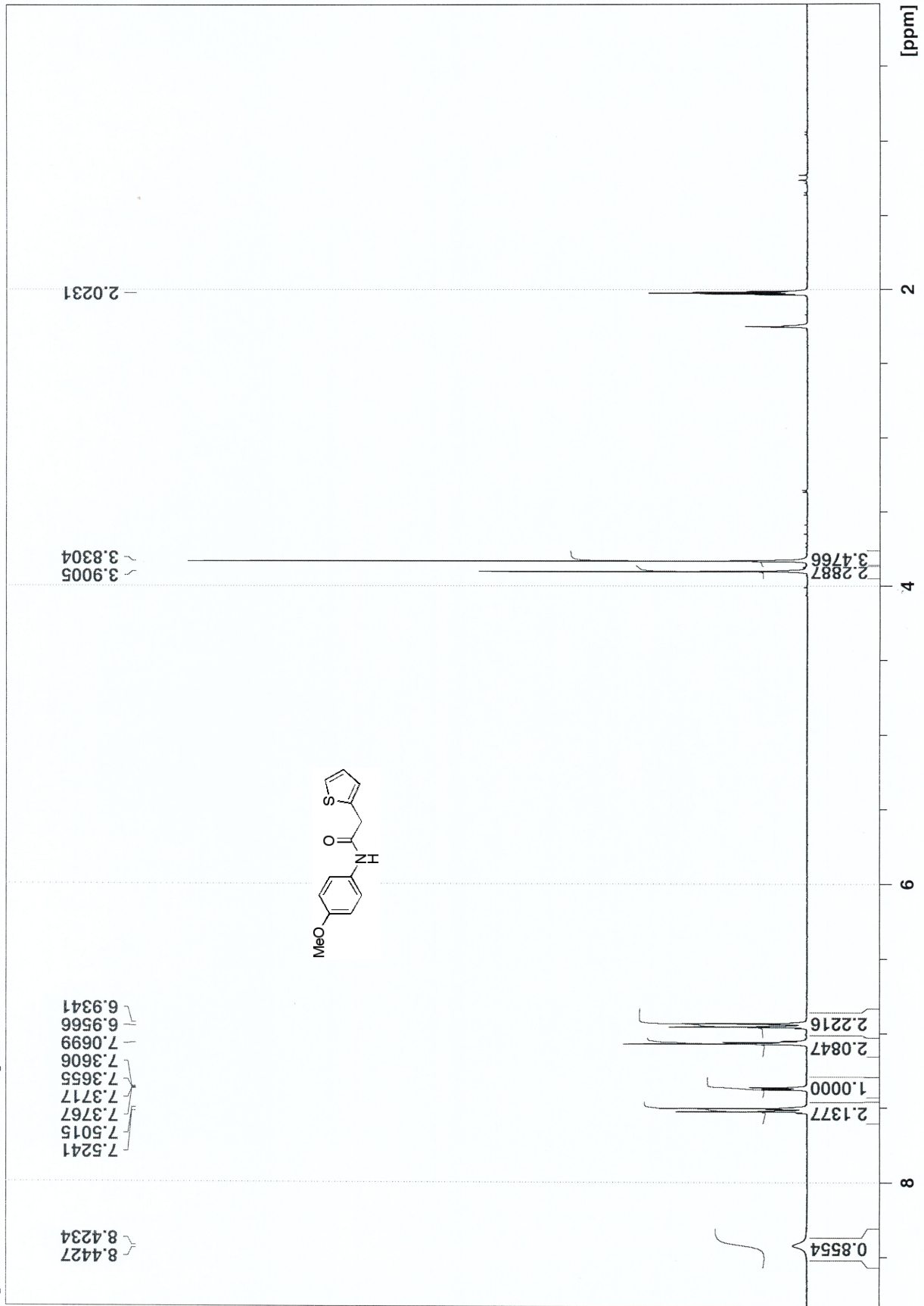


KD130

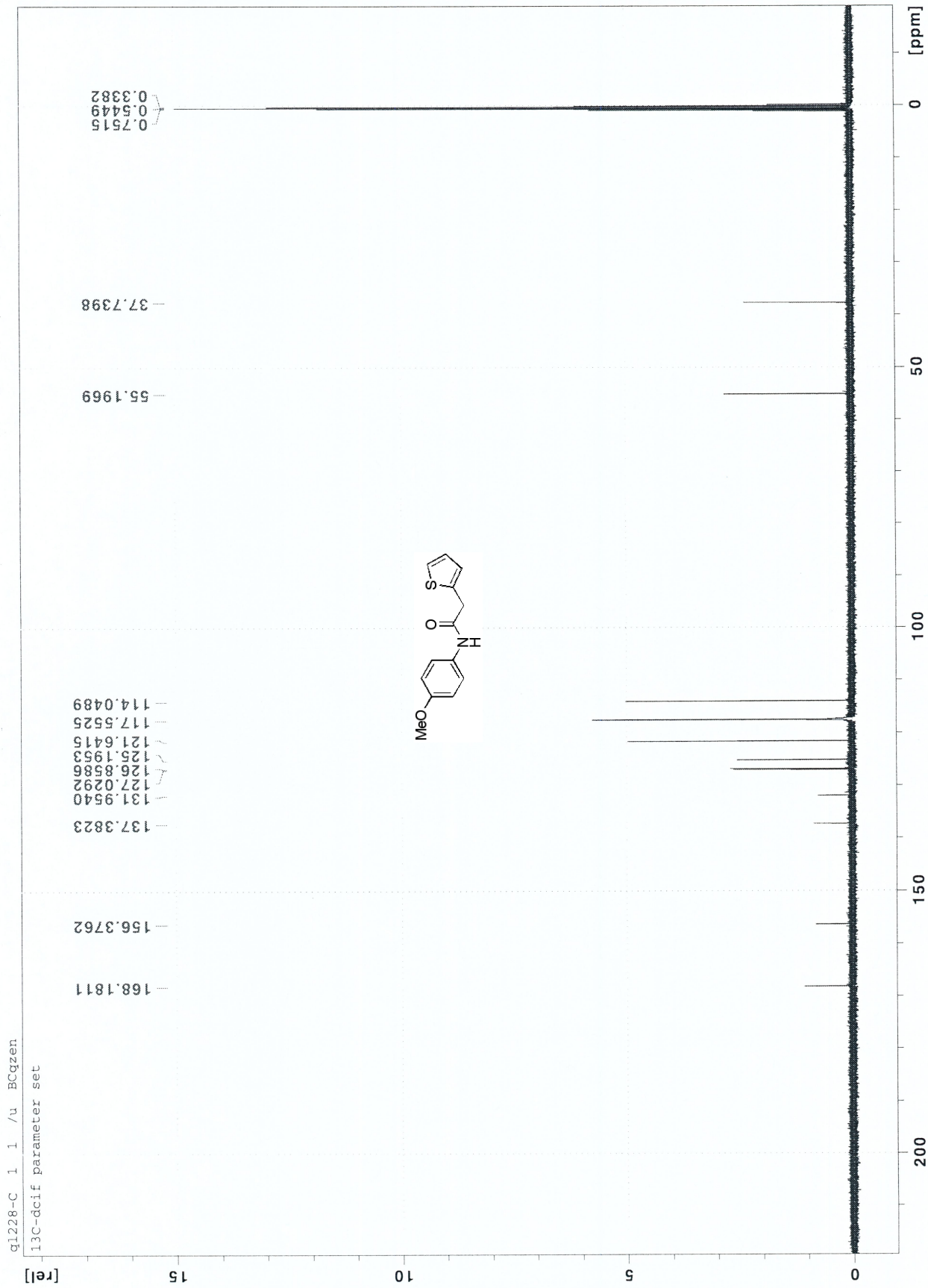
Pulse Sequence: s2pu1



q1228-H-2 1 1 Z: BCqzen



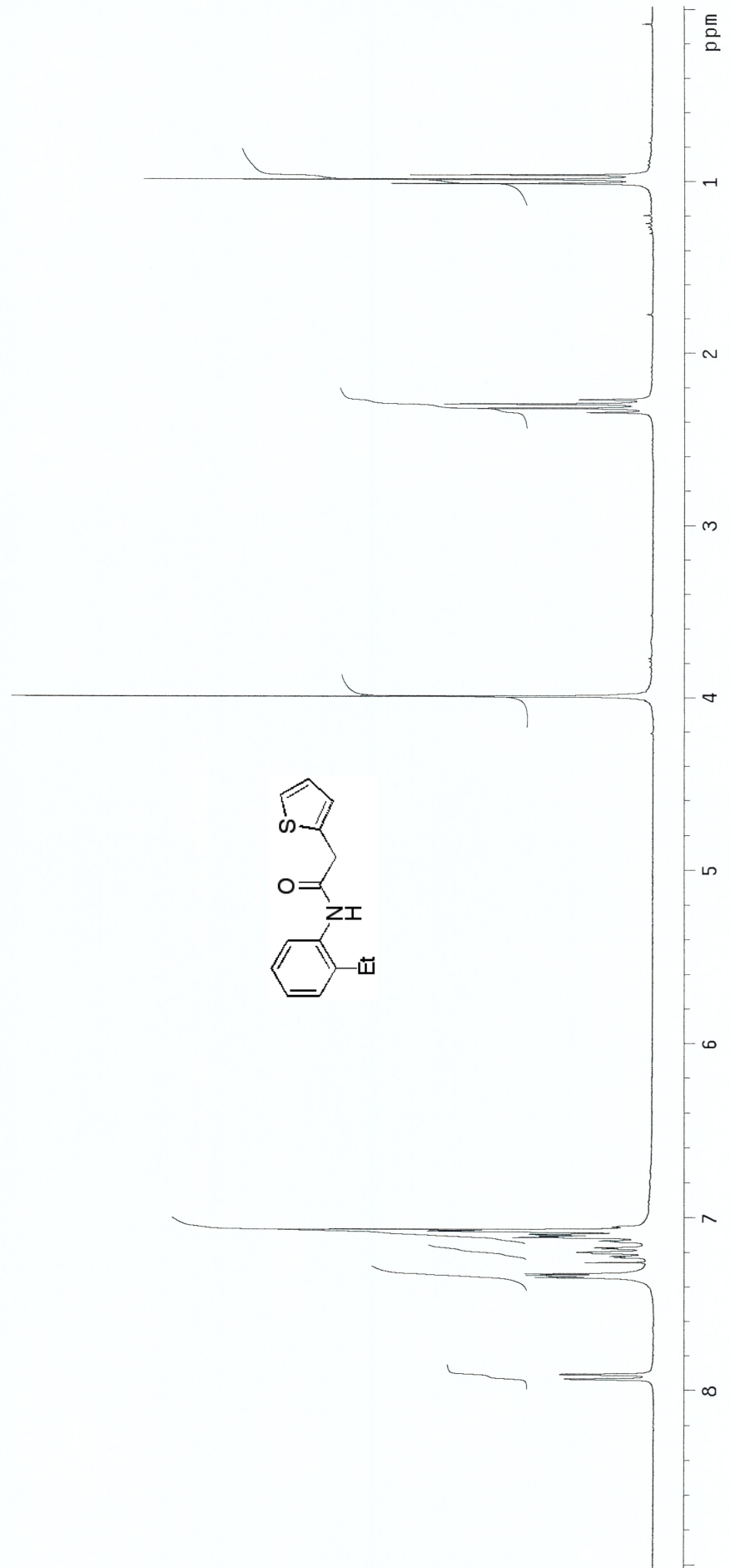






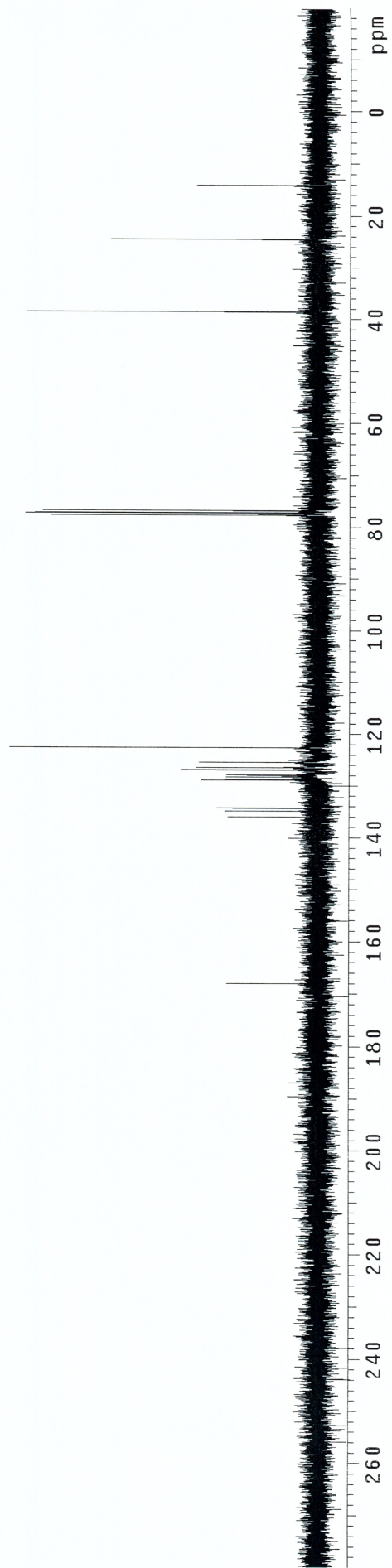
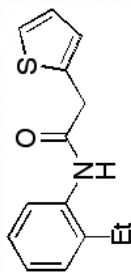
KD126A

Pulse Sequence: s2pu1



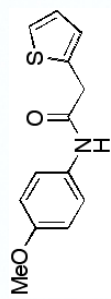
KD126A

Pulse Sequence: s2pu1



KD123

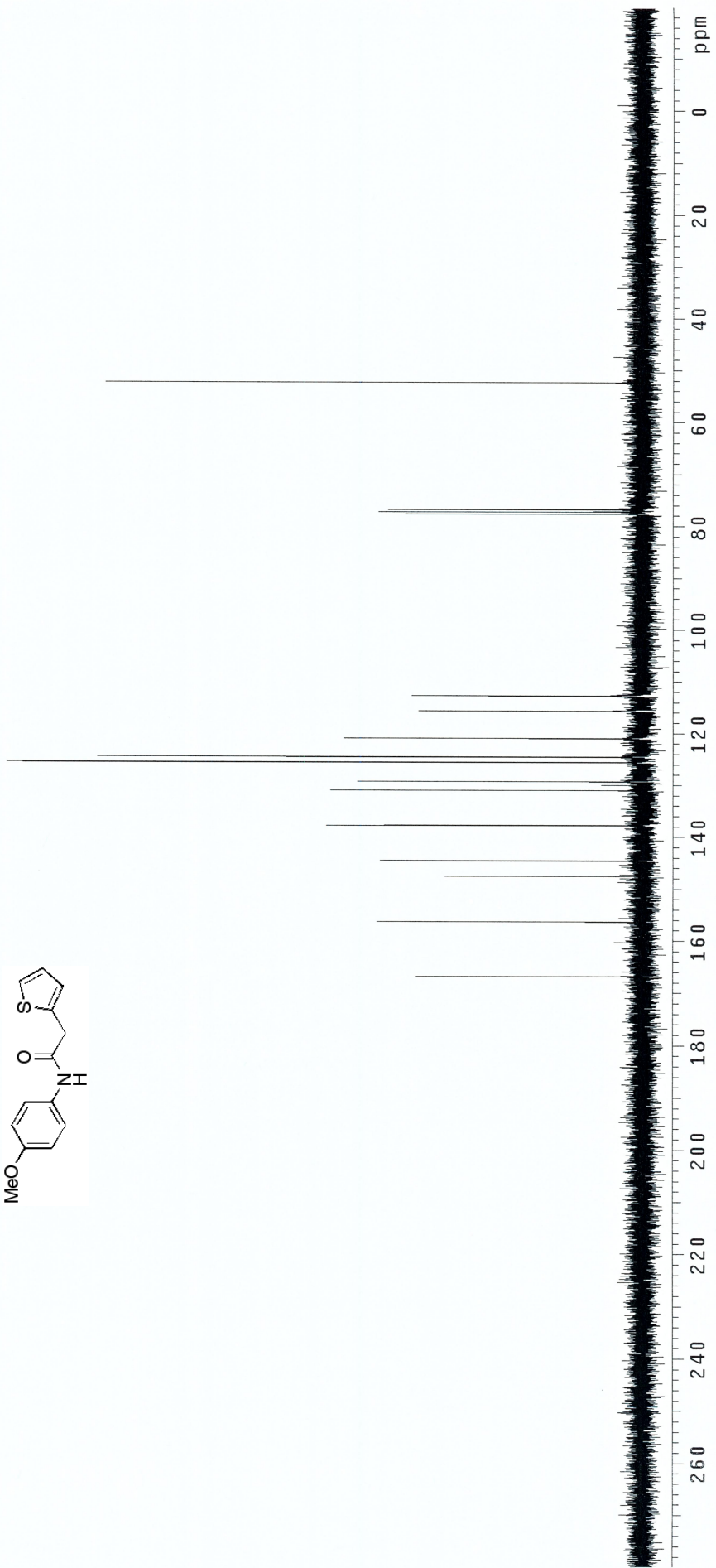
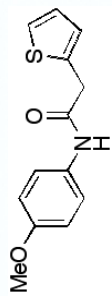
Pulse Sequence: s2pu1





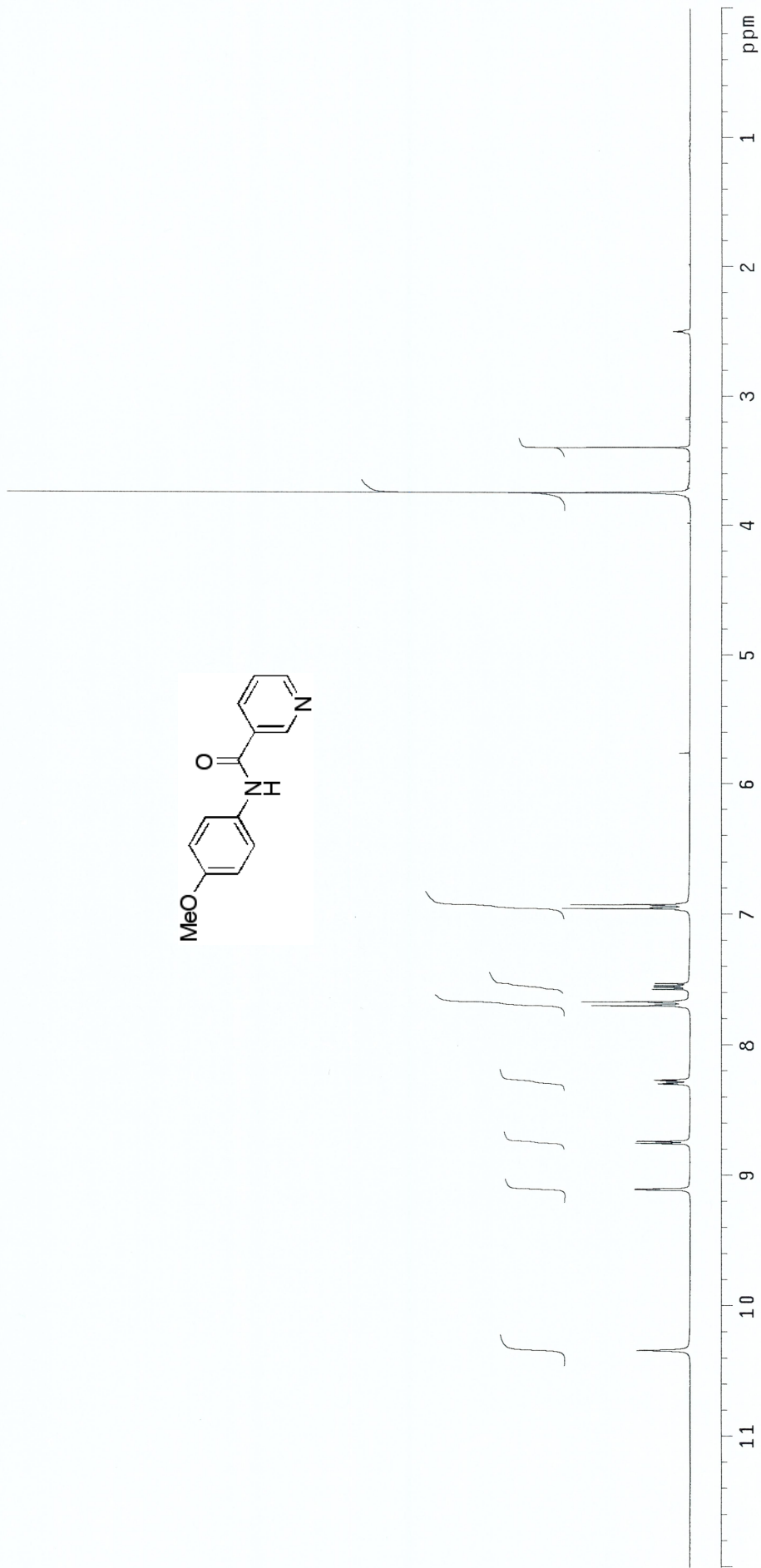
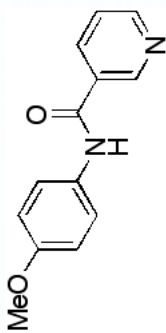
KD113

Pulse Sequence: s2pu1



KD81

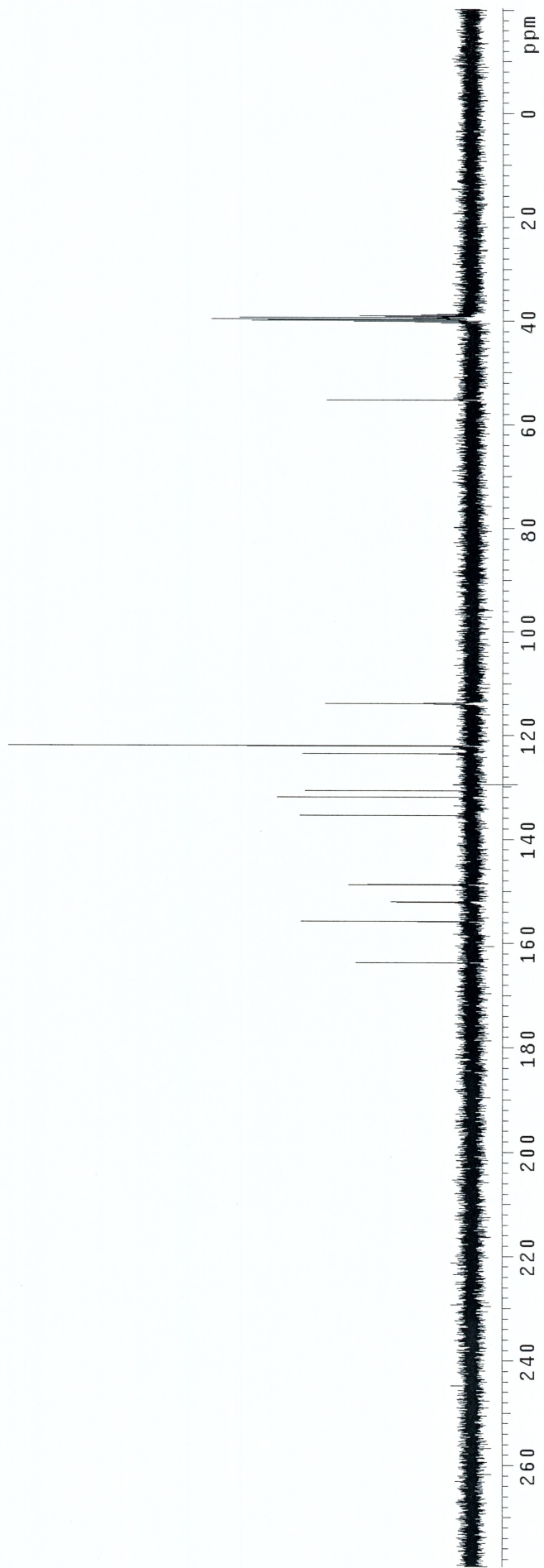
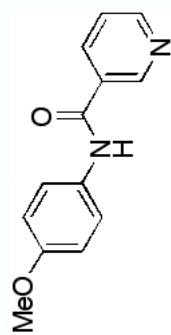
Pulse Sequence: s2pu1

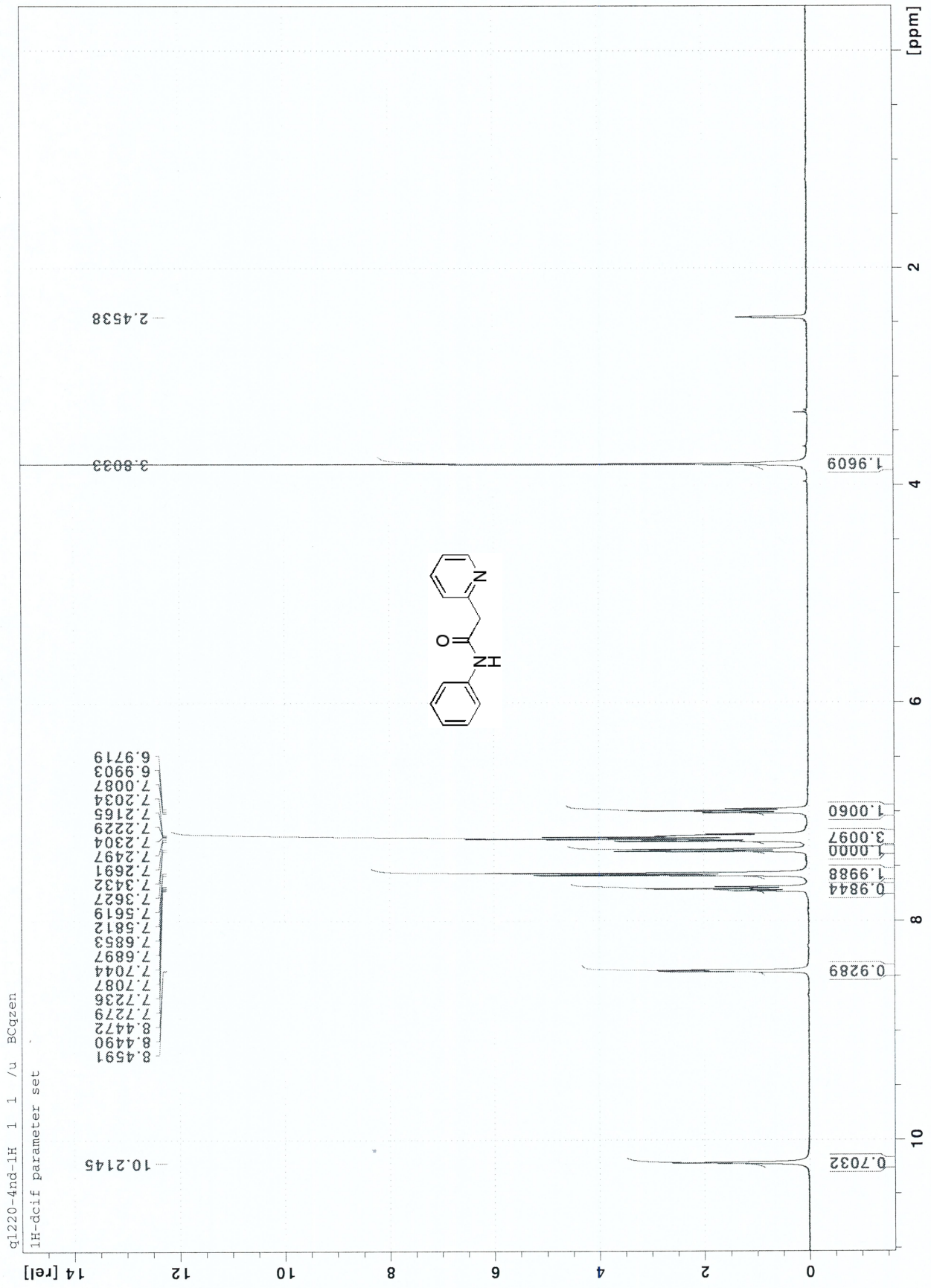




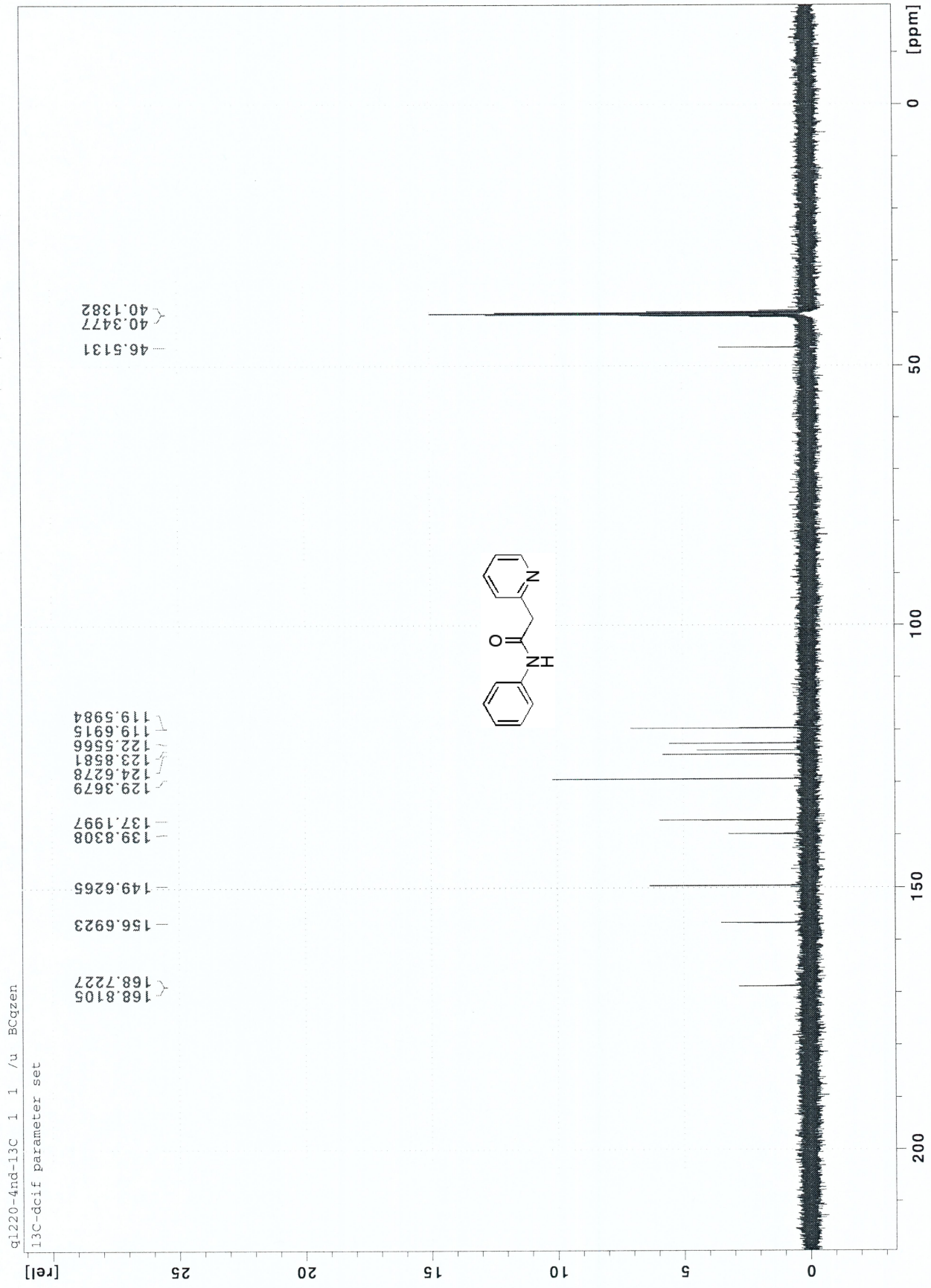
KD81

Pulse Sequence: s2pu1





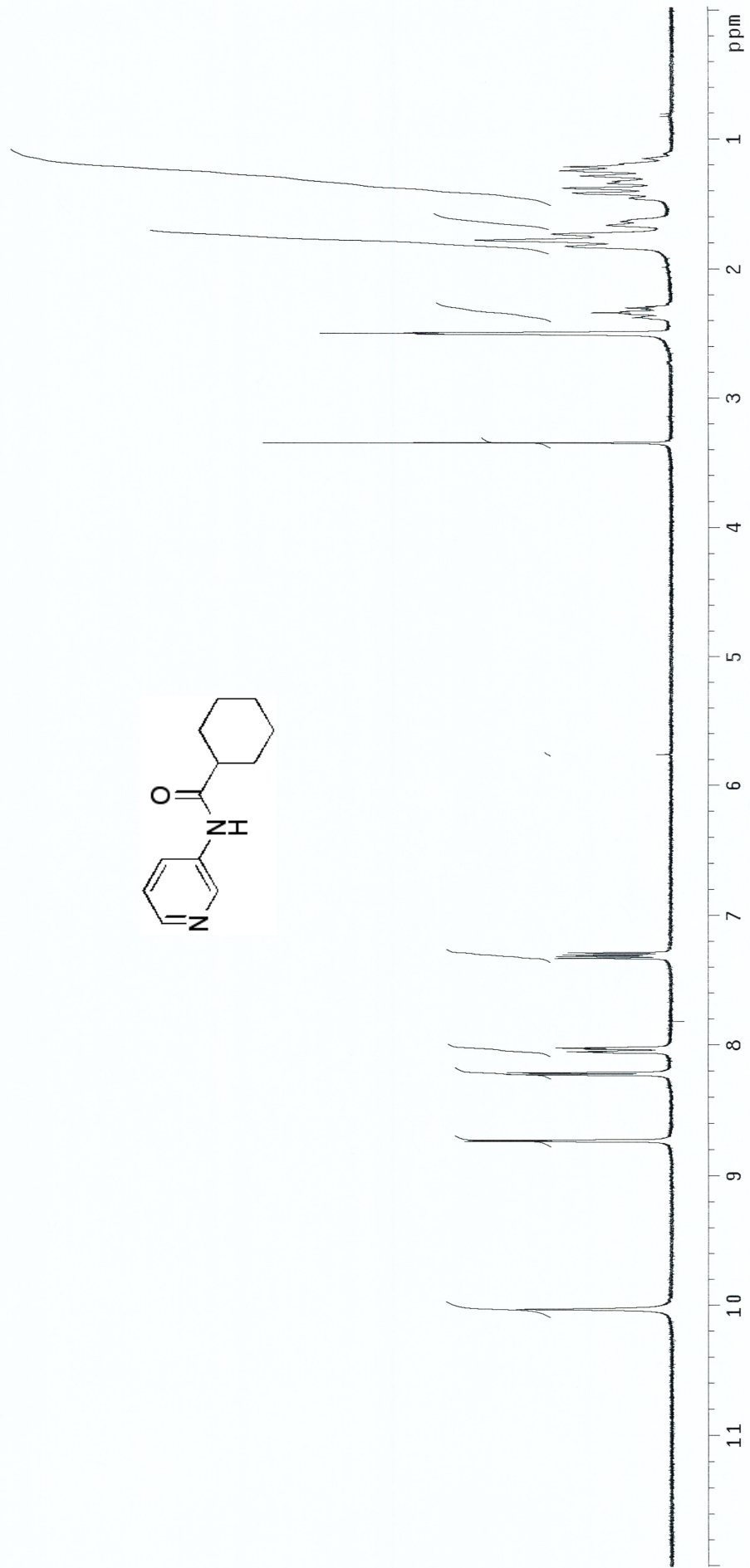
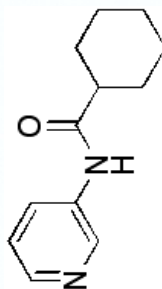
q1220-4nd-1h 1 1 /u BCqzen  
1h-dcif parameter set





KD128B

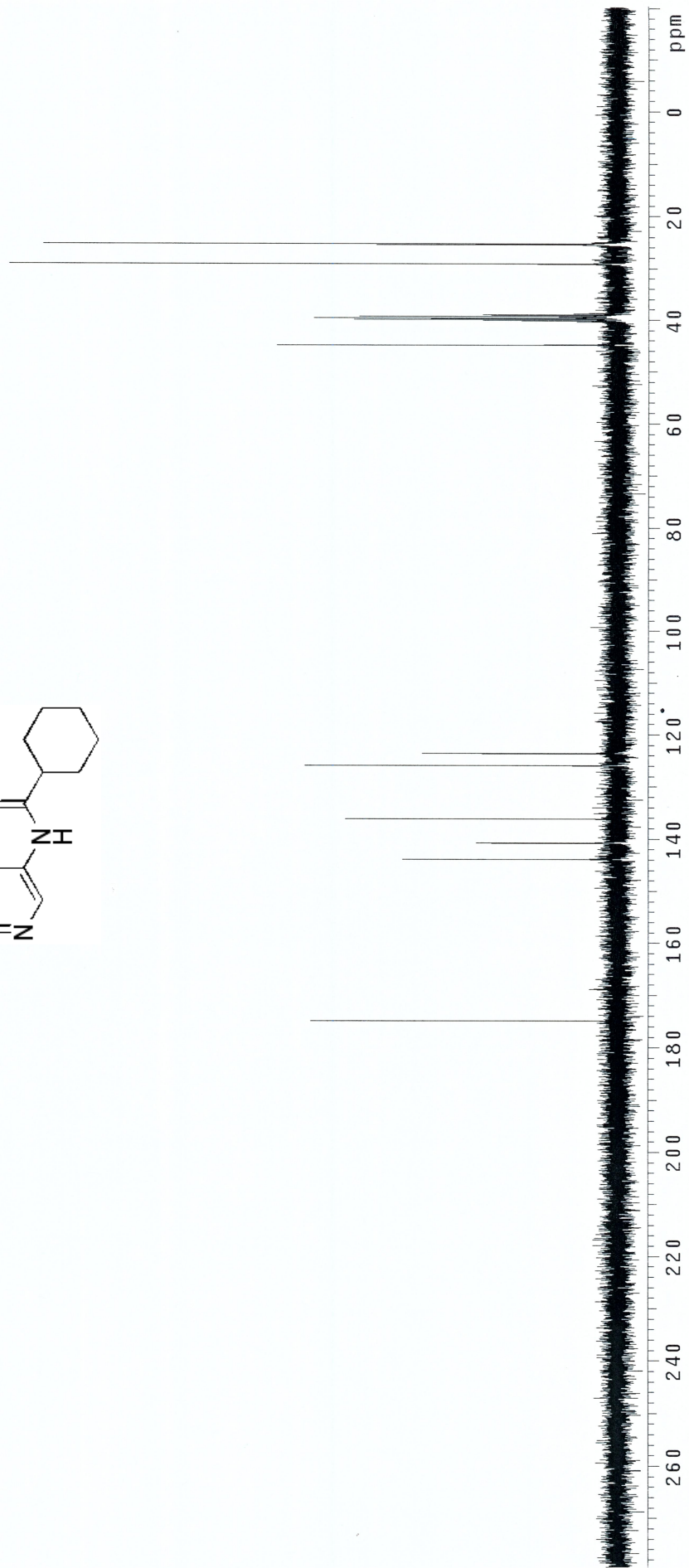
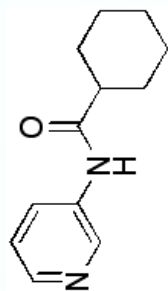
Pulse Sequence: s2pu1





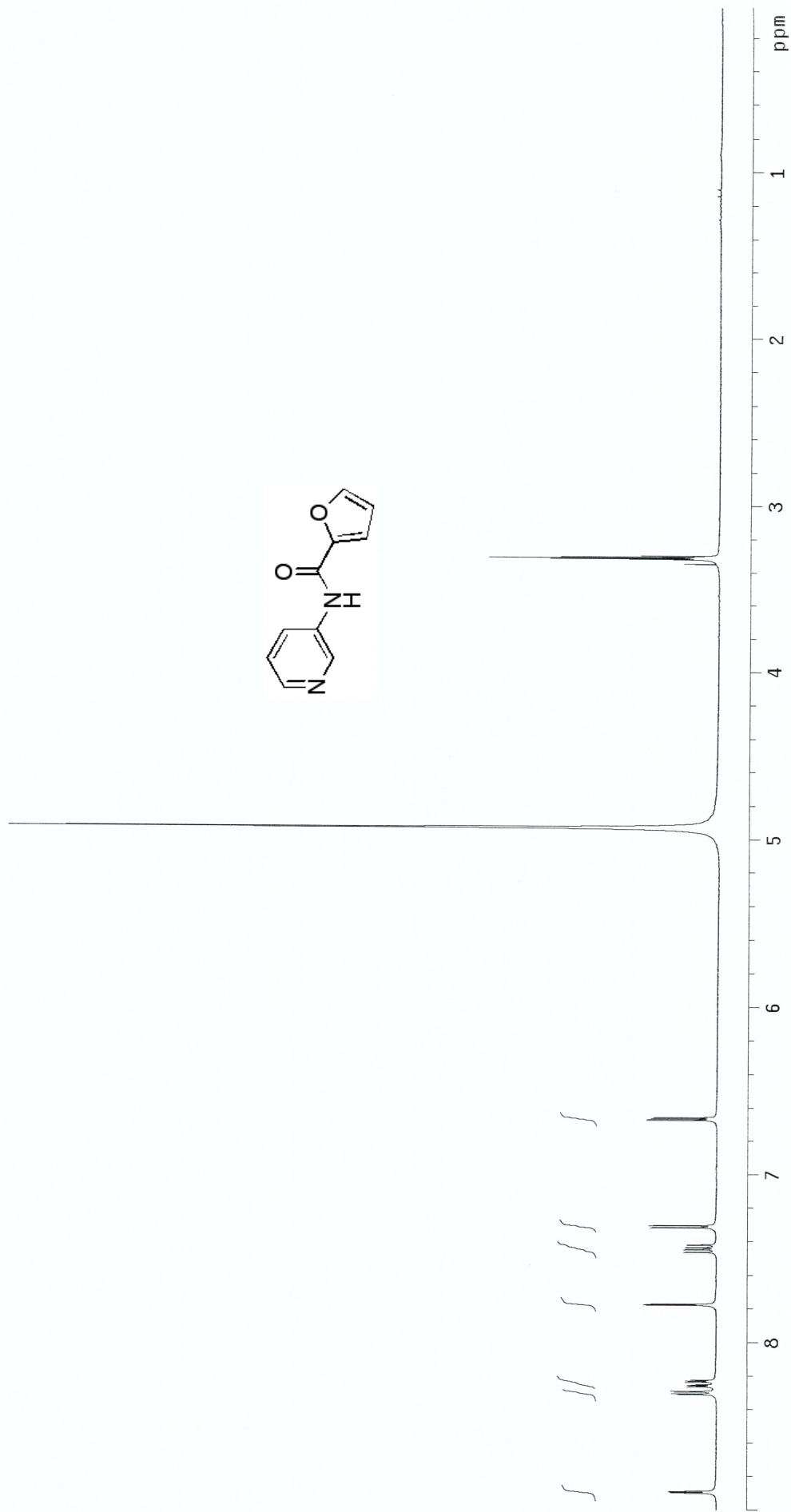
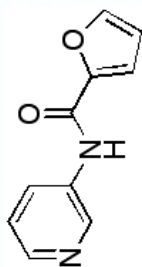
KD128A

Pulse Sequence: s2pu1



KD124

Pulse Sequence: s2pu1



SI 35

KD120  
Pulse Sequence: s2pul1

