

## Supplemental

Figure S1. Extracted ion chromatograms of the  $[M + H]^+$  ions of 2 ng injections of T obtained under A) APPI conditions and B) ESI conditions; and of DHT obtained under C) APPI conditions and D) ESI conditions.

Figure S2. APPI spectra of A)  $5\alpha$ -cholestan-3-one and B)  $5\beta$ -cholestan-3-one. Both species form the  $[M + CH_3]^+$  parent ion but the less stable  $\beta$  species fragments to  $[M + CH_3 - H_3COH]^+$  in source.

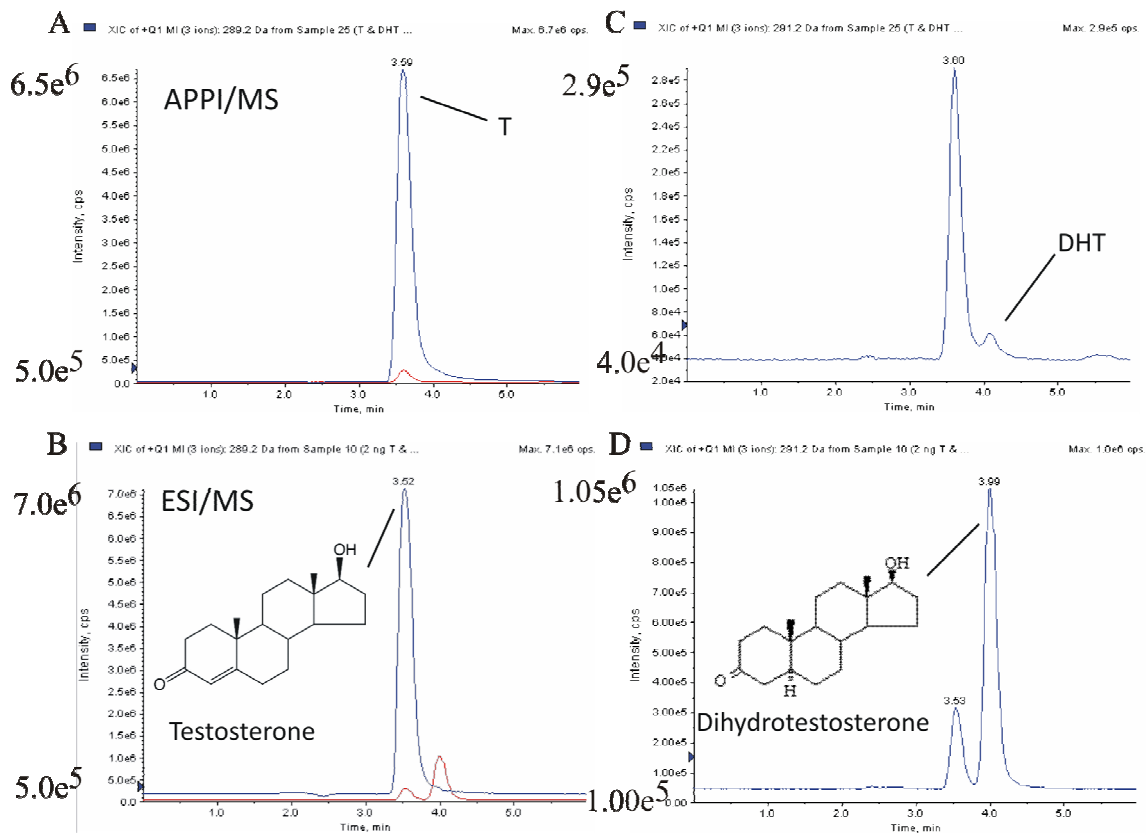


Figure S1

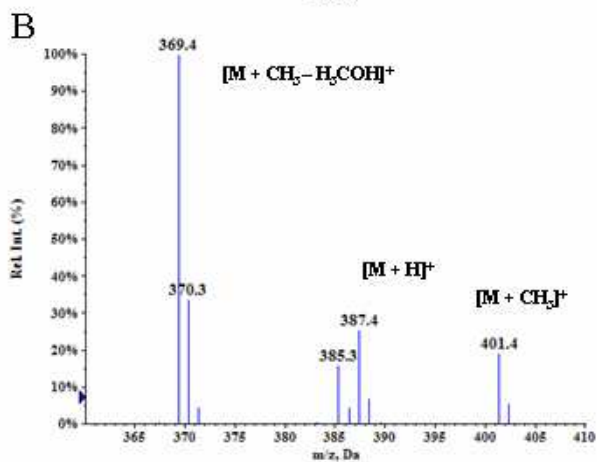
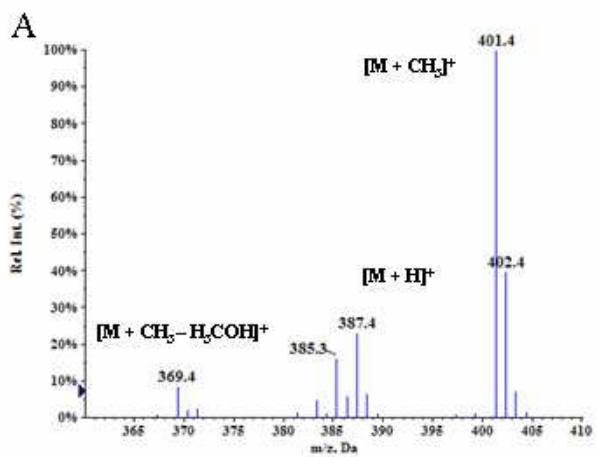


Figure S2

1  
2  
3  
4  
5  
6  
7  
8  
9  
10  
11  
12  
13  
14  
15  
16  
17  
18  
19  
20  
21  
22  
23  
24  
25  
26  
27  
28  
29  
30  
31  
32  
33  
34  
35  
36  
37  
38  
39  
40  
41  
42  
43  
44  
45  
46  
47  
48  
49  
50  
51  
52  
53  
54  
55  
56  
57  
58  
59  
60