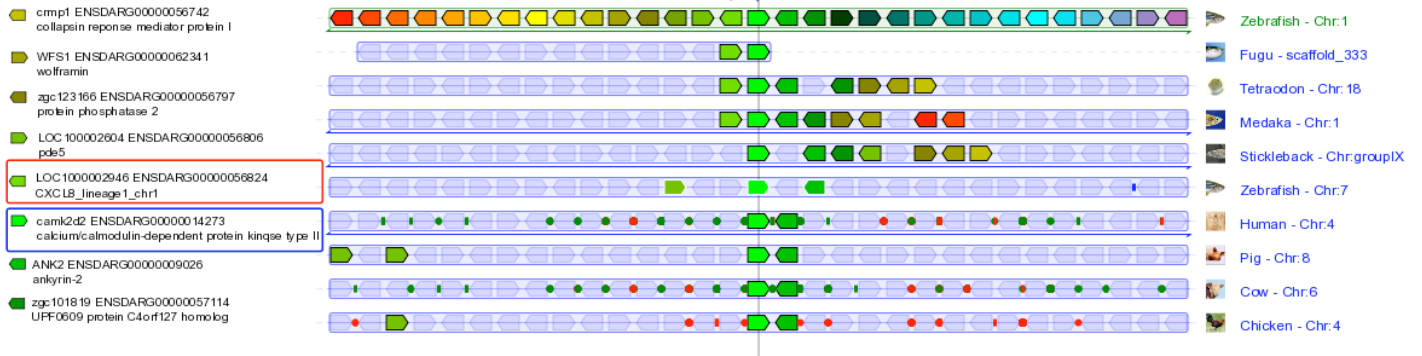
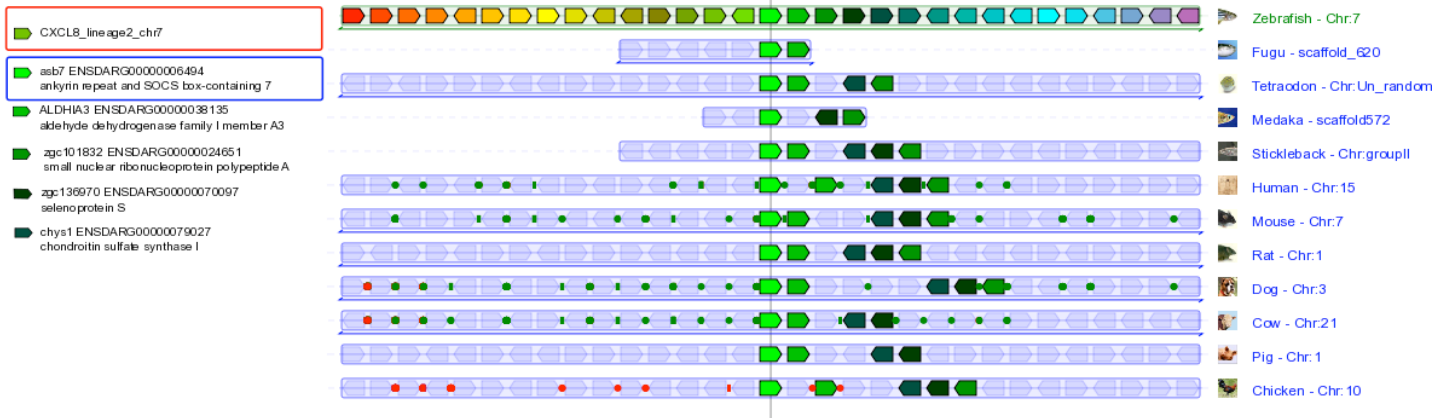


A



B



C

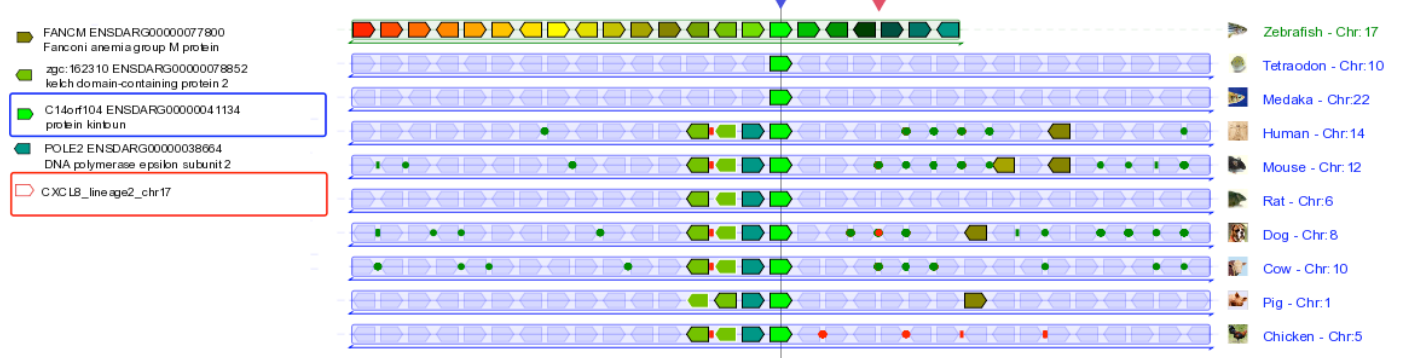


Figure S2 Syntenic organization of zebrafish CXCL8 genes.

Zebrafish *CXCL8_L1_chr1* (A), *CXCL8_L2_chr7* (B) and *CXCL8_L2_chr17* (C). Each reference gene is indicated by a blue arrow and boxed in blue, CXCL8 genes are indicated by a red arrow and boxed in red. Genes that are in synteny are indicated at the left side of the alignment with zebrafish as reference species.