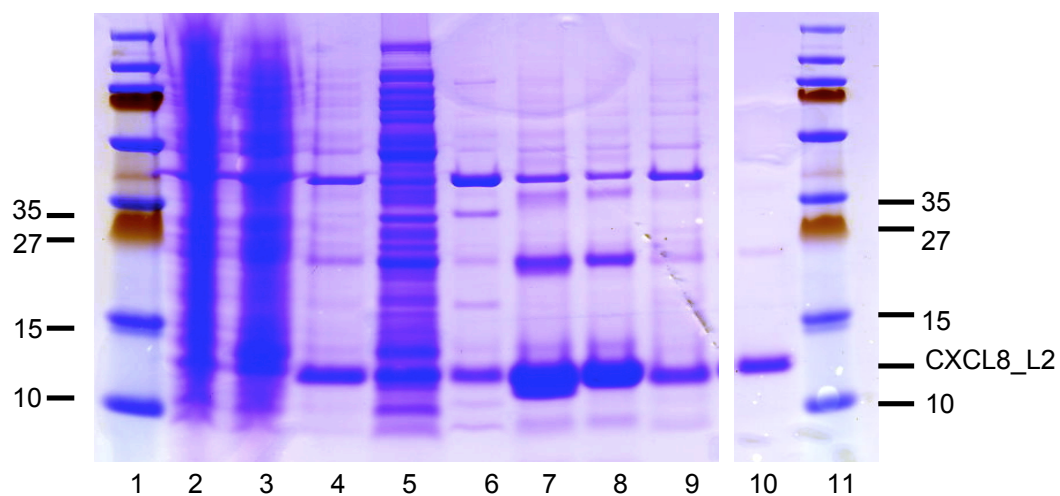
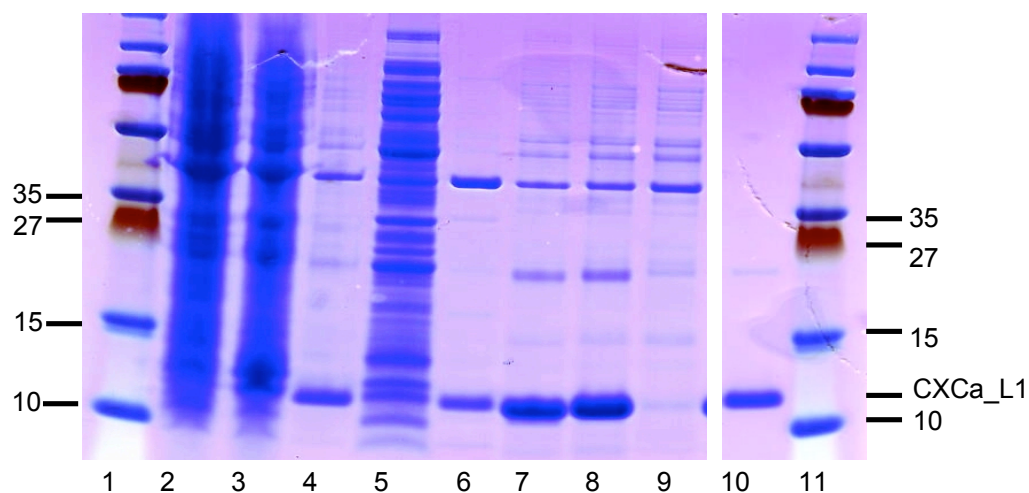


Recombinant carp CXCL8_L2



Recombinant carp CXCa_L1



1 = Dual color protein marker
2 = total bacterial lysate non-induced
3 = total bacterial lysate IPTG-induced
4 = non-soluble fraction
5 = soluble fraction
6 = non-resuspended inclusion bodies

7 = inclusion bodies resuspended in urea (total)
8 = inclusion bodies resuspended in urea
(supernatant, used on column)
9 = flow-through
10 = eluted protein after dialysis and filtration
11 = dual protein marker

Figure S3 Production of recombinant carp CXCa_L1 and carp CXCL8_L2 in *E. coli*. Samples were collected at several steps during the preparation and analyzed on polyacrylamide gel.