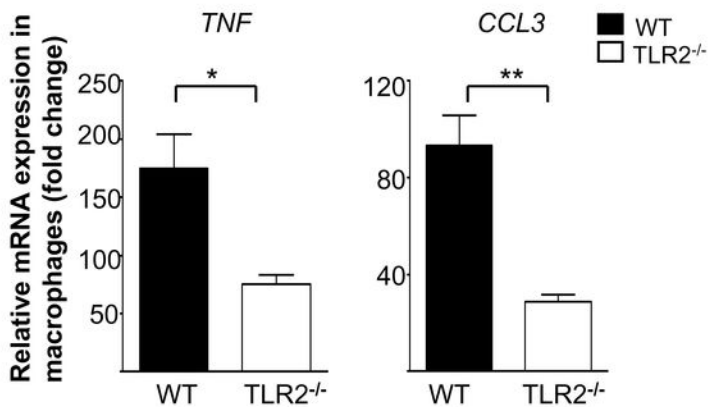


## SUPPLEMENTARY FIGURE LEGENDS

**FIGURE 1.** Impaired expression of *CCL3* and *TNF* was observed in macrophages from  $TLR2^{-/-}$  mice. *TNF* and *CCL3* mRNA was assessed by qPCR in  $TLR2^{-/-}$  macrophages (open bars) and WT (closed bars) mice after 6 h exposure to *NTHi*. Data depict the mean  $\pm$  SEM of three experiments, each performed in triplicate.

**FIGURE 2.** The time course of bacterial recovery in macrophages from  $TNF^{-/-}$  and WT mice, exposed continuously to  $5 \times 10^8$  *NTHi* for 15 min to 3 h with or without rCCL3 treatment. Macrophages from WT animals exhibited more rapid phagocytosis and were more effective in killing than were macrophages from  $TNF^{-/-}$  mice across time ( $p < .01$ , ANOVA). In addition, rCCL3 enhanced phagocytosis and intracellular killing significantly ( $p < .05$ ) in both WT and  $TNF^{-/-}$  macrophages. Data are mean CFUs  $\pm$  SEM, after treatment with gentamicin for 1 h and cell lysis to recover intracellular bacteria.

# Figure 1



# Figure 2

