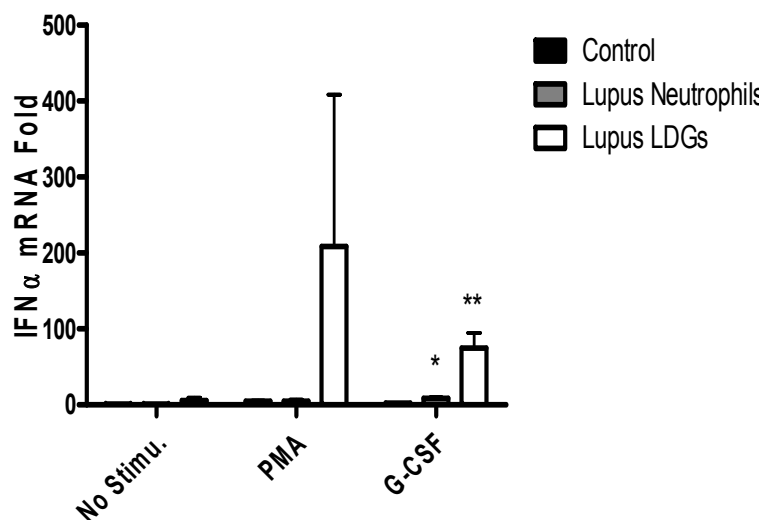
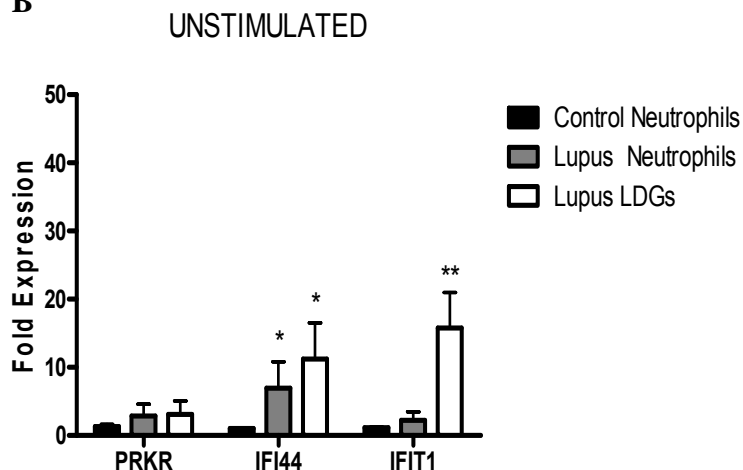


Figure 1 supplement

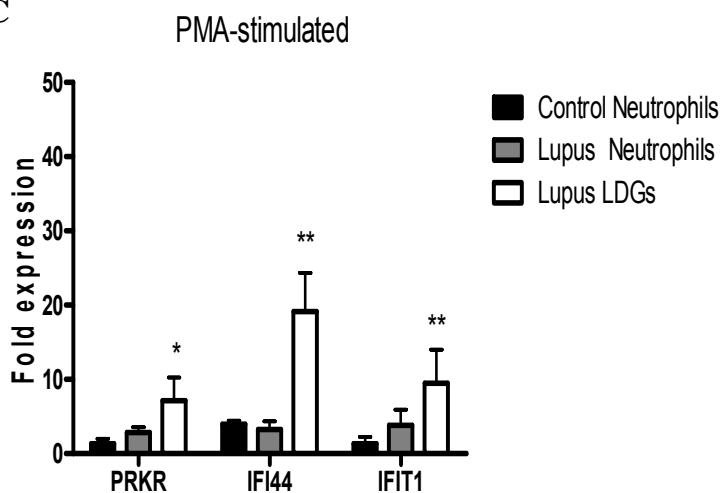
A



B



C



D

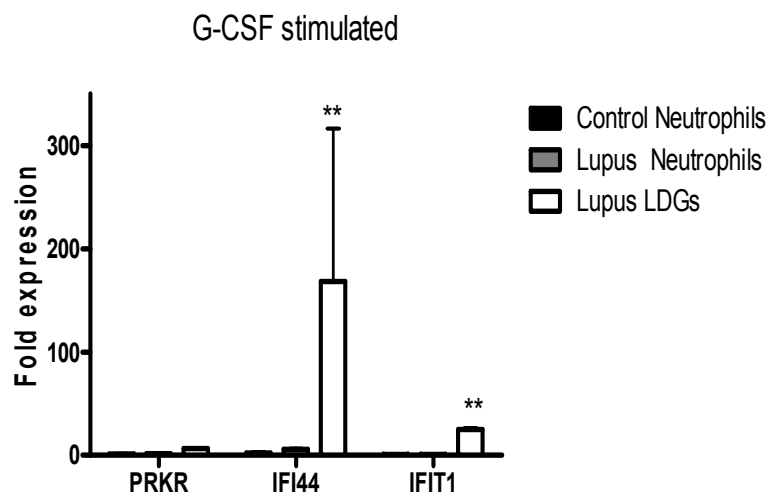


Figure 1 supplement. Lupus LDGs express increased levels of IFN-α mRNA and their supernatants induce enhanced levels of type I IFN-inducible genes. **A.** Results represent mean±SEM of IFN-α mRNA expression, after adjusting for housekeeping gene (*HPRT1*). Results are from 4 controls and 5 SLE patients. **B-D.** Results represent fold induction of IFN-inducible genes (mRNA) on epithelial cell lines by neutrophil supernatants and are presented as mean ± SEM fold-induction by supernatants from control neutrophils (n=5), SLE neutrophils or autologous lupus LDGs (n=8 each). Data are normalized to *HPRT-1*, *p<0.05 when comparing to control neutrophils and **p<0.05 when comparing LDGs to both control and lupus neutrophils. Neutrophils and LDGs were isolated by negative selection after gradient centrifugation.