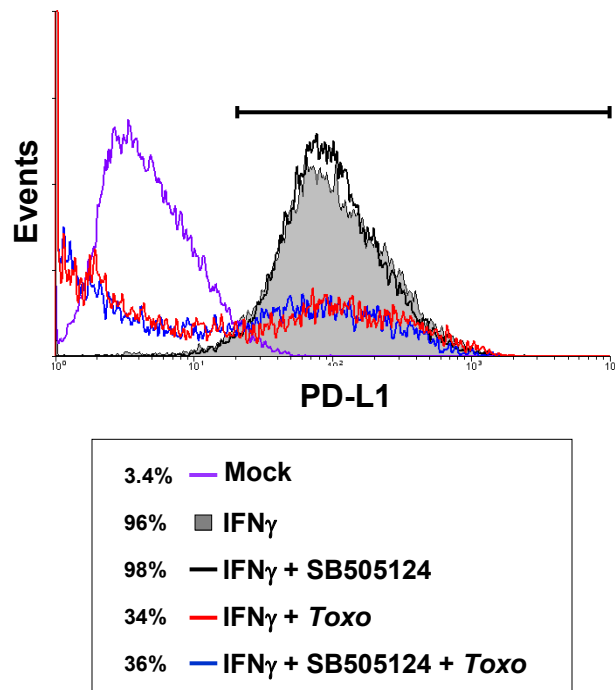
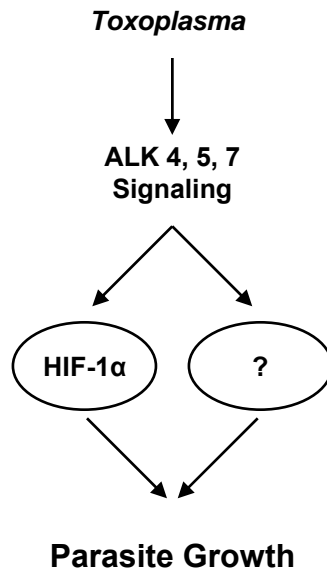


Supplemental Figure S1: *Toxoplasma* Has No Effect on FKBP38 Protein Levels. Lysates from mock or parasite-infected HFFs were Western blotted to detect FKBP38 or actin. Shown is a representative blot from three independent experiments.

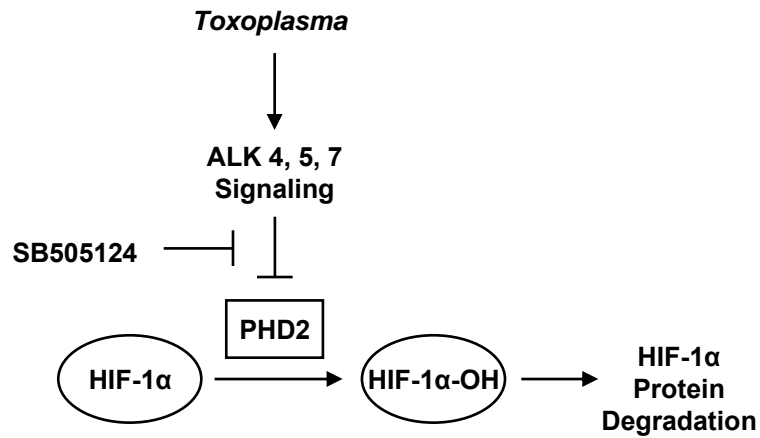


Supplemental Figure S2: Inhibition of ALK4,5,7 Signaling Does Not Effect *Toxoplasma* Signaling to Host Cell. Vehicle- or SB505124-inhibited cells were infected with GFP⁺ parasites and 6 hours later exposed to IFN γ . After 24 hours, cells were harvested and stained to detect surface-exposed PD-L1. Histogram represents PD-L1 expression on parasite-infected (GFP⁺) cells. Percentages shown represent the number of events within the gate, which determined by isotype staining controls (not shown).

A.



B.



Supplemental Figure S3: Model for ALK4,5,7 Signaling in *Toxoplasma* Infections. A). ALK4,5,7 downstream signaling is important for *Toxoplasma* growth by regulating HIF-1 α and potentially other pathways. B). *Toxoplasma* activates HIF-1 α by ALK4,5,7-dependent decreases in PHD2 protein levels.