

Supplemental Figure 1.

A) Analyses of lymphocyte gated peritoneal B1a (IgM+ CD5+) and B2 (IgM+ CD5-) cells. B) Analyses of lymphocyte gated bone marrow B cells at various stages of differentiation.

Expression of surface activation markers on CD19⁺ gated cells from spleens and lymph nodes. Shaded histogram indicates *Tnfaip3*^{+/+} cells, blue line is *Tnfaip3*^{fl/+} and red line is *Tnfaip3*^{fl/fl} B cells.

Supplemental Figure 2.

Normal antigen specific B cell responses in *Tnfaip3*^{fl/fl} *CD19-Cre* mice.

ELISA analyses of serum Ig levels. (A) Ig isotypes levels in 5 to 7 week-old *Tnfaip3*^{fl/fl} *CD19-Cre*, *Tnfaip3*^{fl/+} *CD19-Cre* and *Tnfaip3*^{fl/+} *CD19-Cre* mice (n=6) plotted as means ± SEM. * indicates p < 0.05 by one-way ANOVA. (B) T-cell dependent, antigen specific B cell responses to NP-KLH. NP-specific antibody levels before and after immunization at the indicated time points, plotted as the geometric mean ± SEM of 5 mice. Serum dilutions of 1:200 for IgM and 1:100 for IgG1 and IgG2b are shown. * indicates p < 0.05 by two-way ANOVA.

Figure S 1

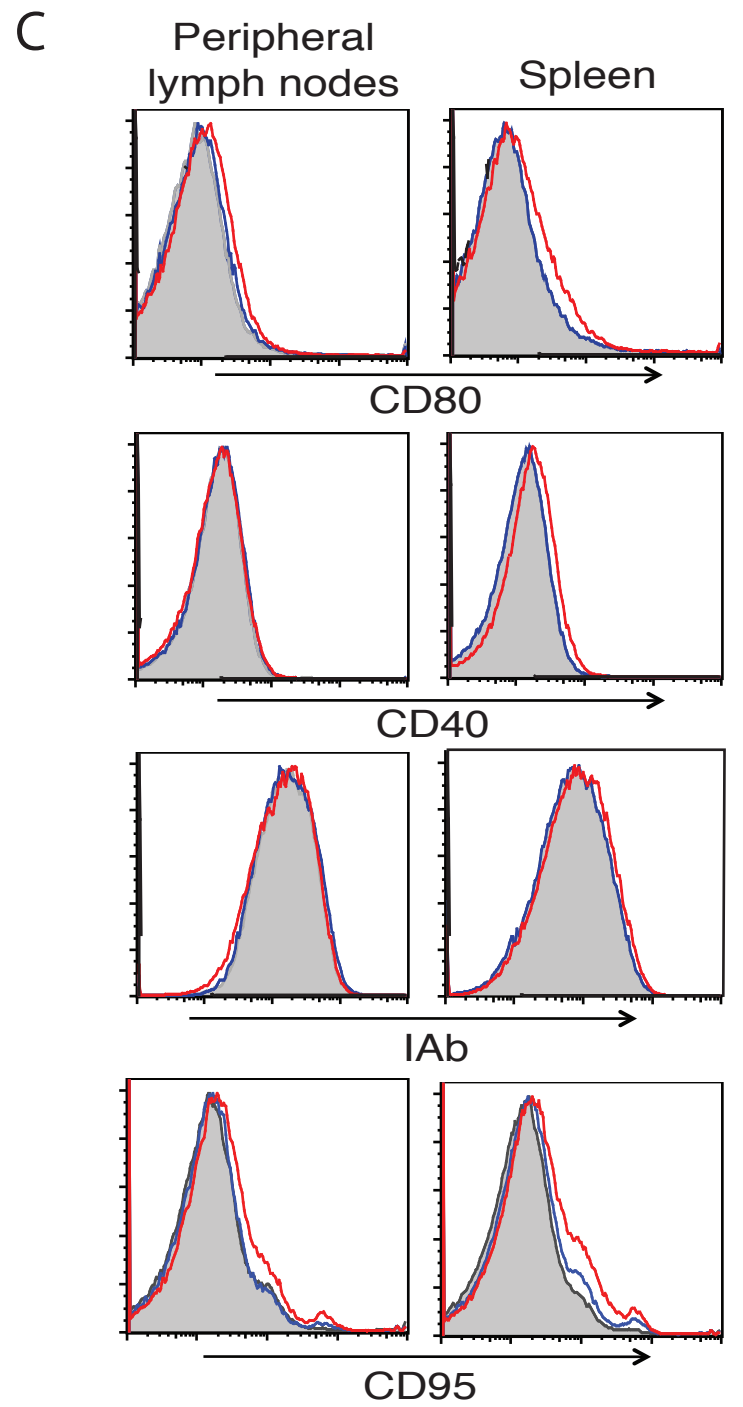
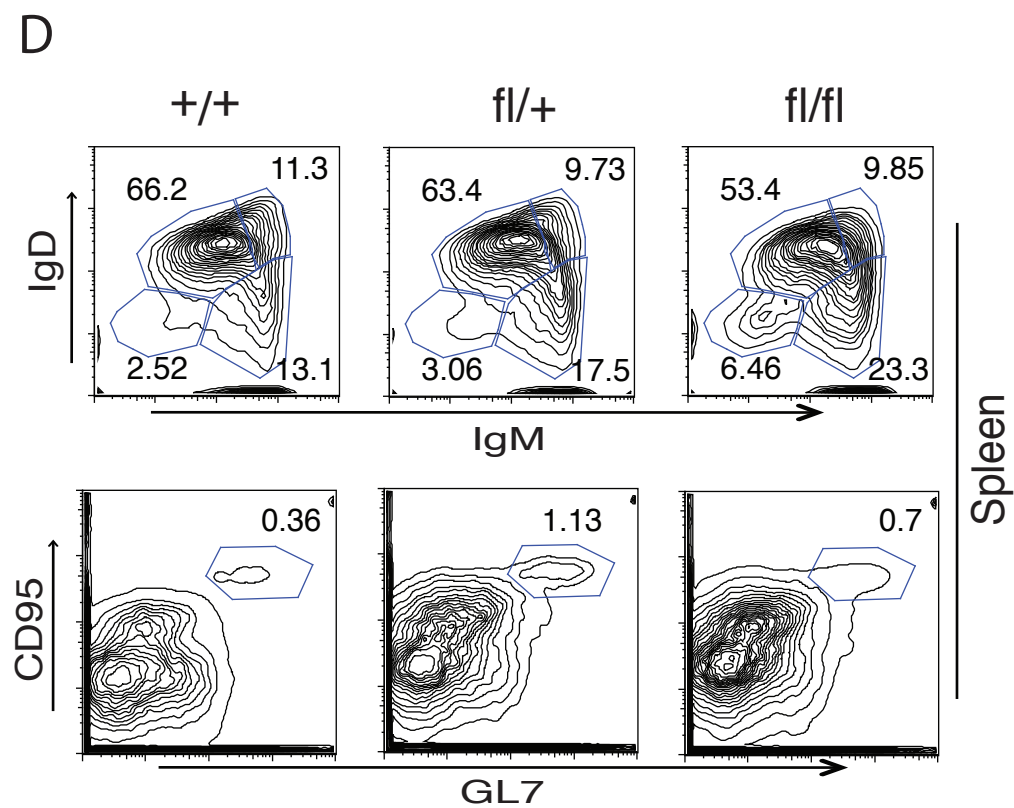
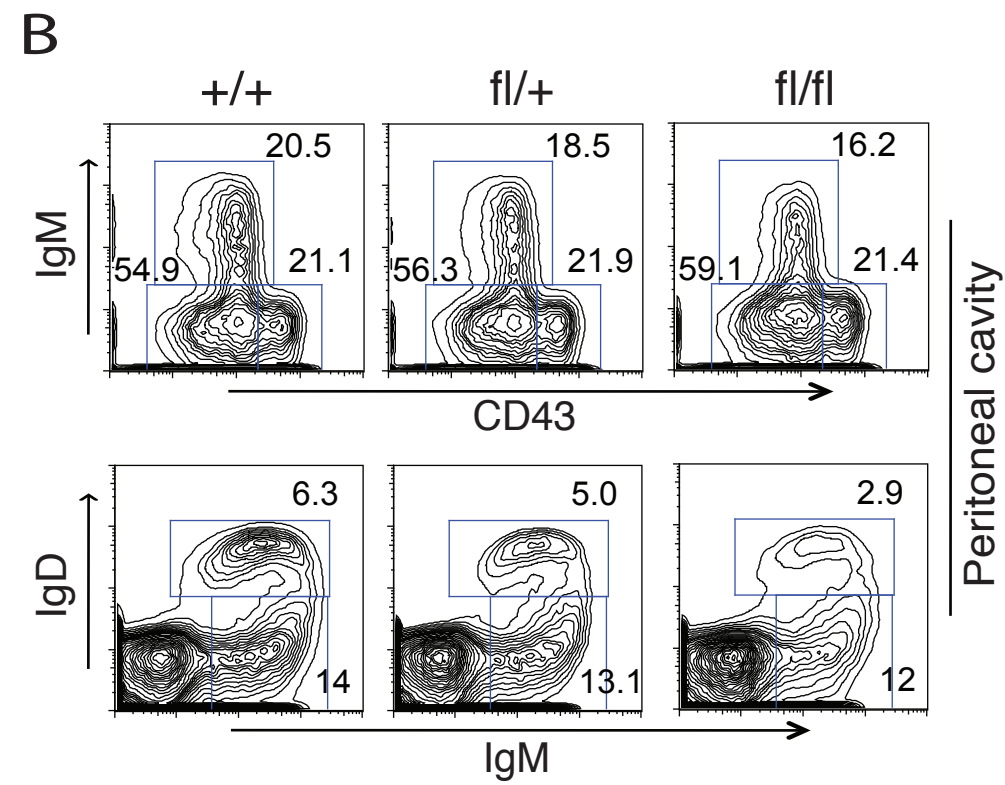
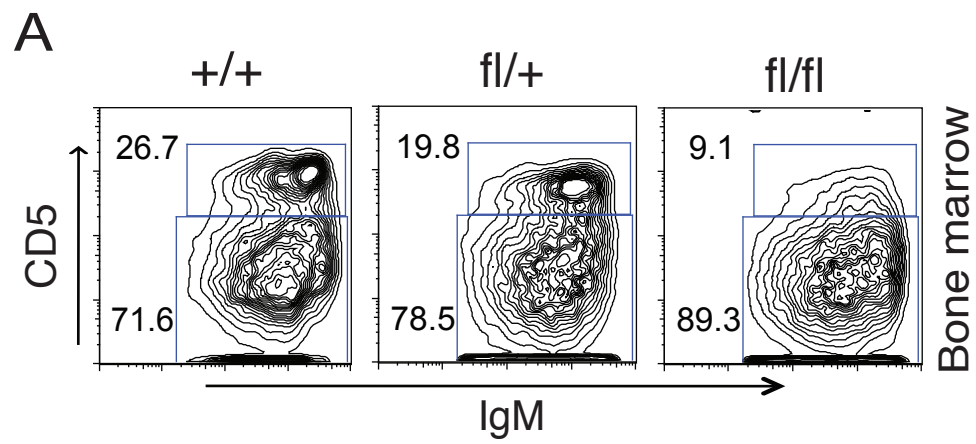
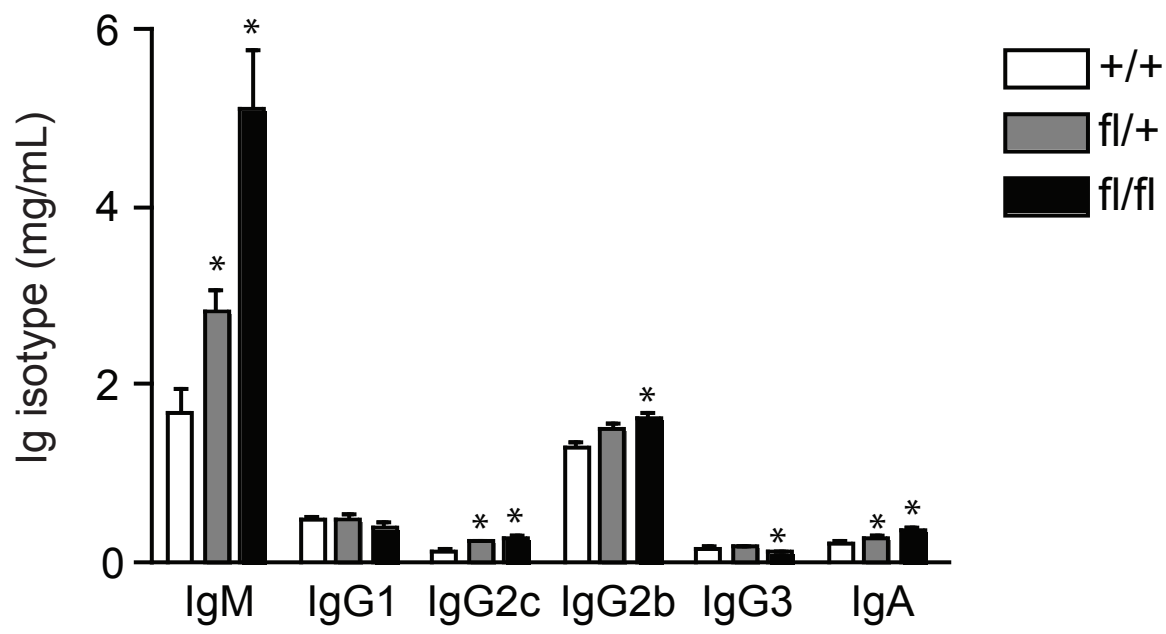


Figure S 2

A



B

