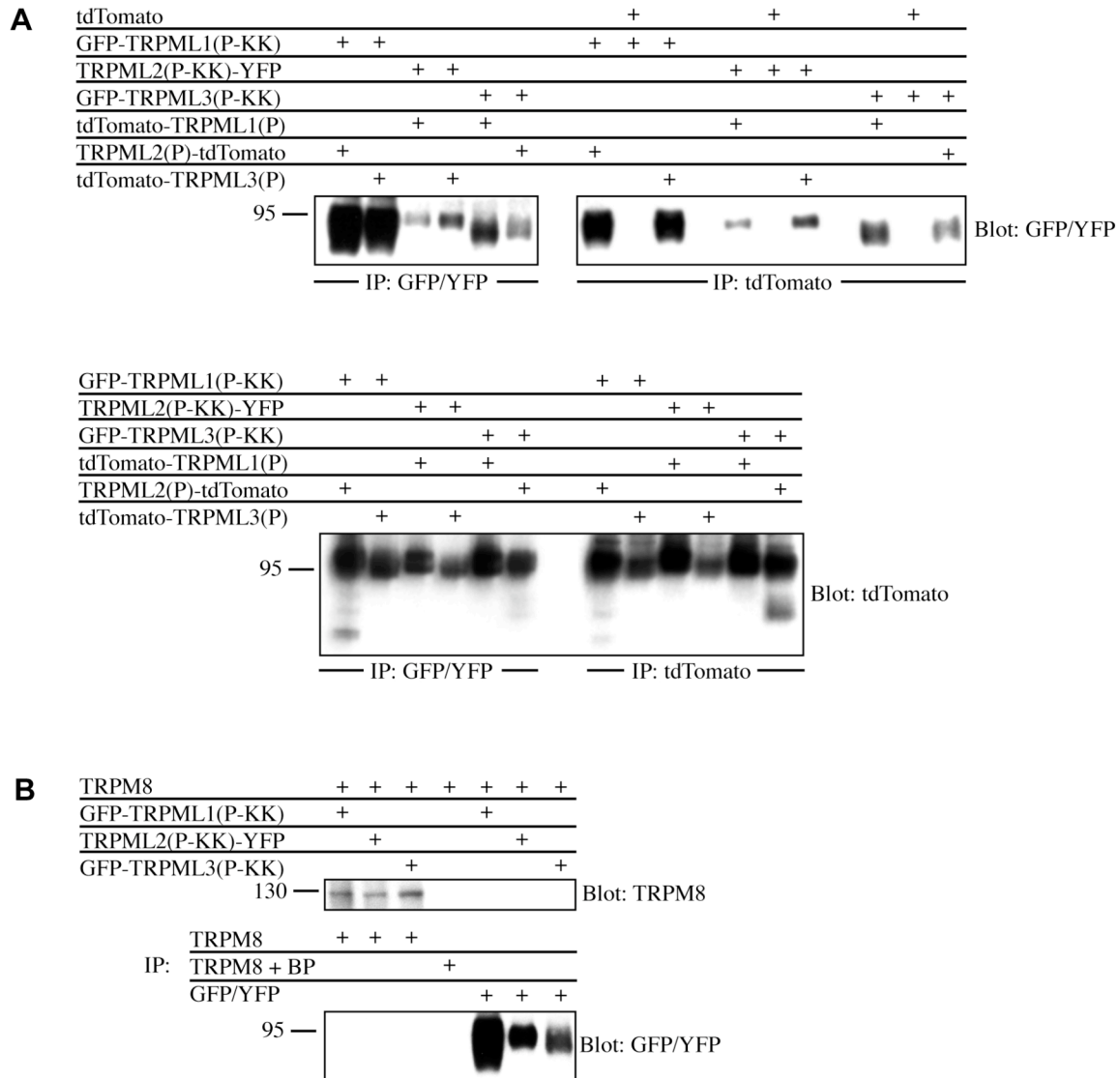


## Figure S2



**Fig. S2.** Pore region mutations do not interfere with TRPML subfamily physical interactions involving proteins of differing TRPML origin. **(A)** HEK cells were co-transfected with the indicated expression constructs (above top and bottom panels) and GFP/YFP- or tdTomato-tagged constructs were then immunoprecipitated (as indicated below panels). Immunoprecipitates were separated on gels followed by immunoblotting against the indicated targets (to the right of panels). Top right panel and left side of bottom panel, tdTomato-tagged TRPML(P)s co-IP with GFP/YFP-tagged TRPML(P-KK)s of differing TRPML origin. Top left panel and right side of bottom panel, positive controls. **(B)** TRPM8 does not co-IP with TRPML(P-KK) channels. HEK cells, co-transfected with the indicated constructs (above panels), were subject to immunoprecipitation with polyclonal anti-GFP (IP: GFP/YFP), polyclonal anti-TRPM8 (IP: TRPM8), and polyclonal anti-TRPM8 pre-incubated with a TRPM8 blocking peptide (IP: TRPM8 + BP; control for specificity of the anti-TRPM8 antibody), as indicated (between top and bottom panels). Immunoprecipitates were separated on gels followed by immunoblotting against the indicated targets (to the right of each panel).