

Figure S4

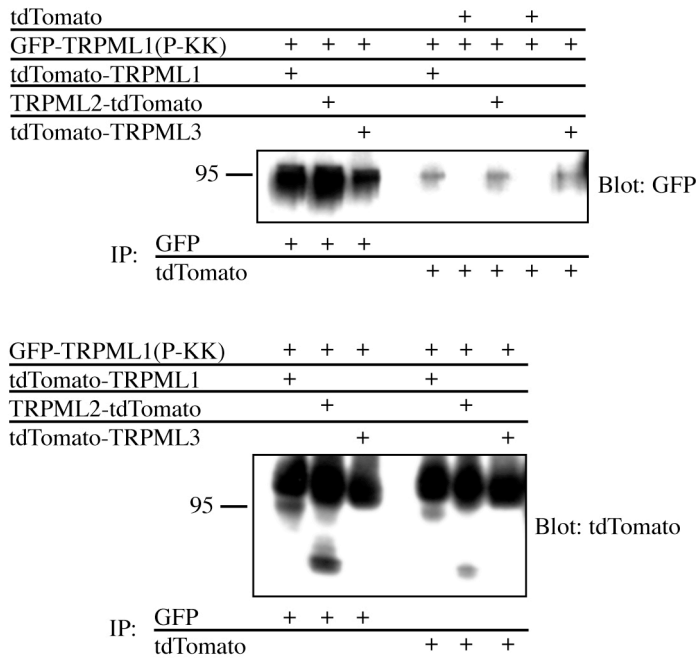


Fig. S4. GFP-TRPML1(P-KK) co-IPs with WT-TRPML channels. HEK cells were co-transfected with the indicated expression constructs (above top and bottom panels) and GFP- or tdTomato-tagged constructs were then immunoprecipitated (as indicated below panels). Immunoprecipitates were separated on gels followed by immunoblotting against the indicated targets (to the right of panels). Right side of top panel and left side of bottom panel, tdTomato-tagged WT-TRPMLs co-IP with GFP-TRPML1(P-KK). Left side of top panel and right side of bottom panel, positive controls.