

Supplementary Table S1. Primers for the analysis of *Dhcr24* expression and quantitative real-time PCR.

Gene	GeneBank ID	No.	Primer	Sequence 5'→3'
<i>Dhcr24</i> EXPRESSION				
<i>Dhcr24</i>	NM_053272.1	1 2 3 4 5 6 7 8	ED24RSEN ED24RANT 24RRSEN ED24RANT 2.1 ED24RANT3.1 ED24RANT4.1 ED24RANT5.1 ED24RANT7.1	CATCCCTTTTCGGCAACAACCC GGAGTGTGCACGGGTTCCAAAT CTGCCGCTCTCGTTATCTTCG CTTGGTGTCCACCTCCAGGA TCATCAAGCTCAGGCAACAC CCAGGATCAGCTCGTAGGCAG AAGTGGTTCTCCAGCCGCTG CGTGGTGCTGCTCGTACAGC
<i>Gapdh</i>	NM_008084	9 10	GAPDHSEN GAPDHANT	CTCTGGAAAGCTGTGGCGTGAT AGTCAAGGCCGAGAATGGGAAG
QUANTITATIVE REAL-TIME PCR				
<i>Hmgcr</i>	NM_008255	11 12	hmgRED Fw hmgRED Rev	CTTGTGGAATGCCTTGTGATTG AGCCGAAGCAGCACATGAT
<i>Ldlr</i>	NM_010700	13 14	LDLR Fw LDLR Rev	AGGCTGTGGGCTCCATAGG TGCGGTCCAGGGTCATCT
<i>Insig1</i>	NM_153526.2	15 16	Insig1 Fw Insig1 Rev	TCACAGTGACTGAGCTTCAGCA TCATCTTCATCACACCCAGGAC
<i>Srebf1c</i>	NM_011480	17 18	SREBP-1c Fw SREBP-1c Rev	GGAGCCATGGATTGCACATT GGCCCGGGAAGTCACTGT
<i>Srebf2</i>	NM_033218	19 20	SREBP-2 Fw SREBP-2 Rev	GCGTTCTGGAGACCATGGA ACAAAGTTGCTCTGAAAACAAATCA
<i>Abca1</i>	NM_013454	21 22	ABCA1 Fw ABCA1 Rev	CGTTTCCGGGAAGTGTCTTA GCTAGAGATGACAAGGAGGATGGA
<i>Fas</i>	NM_007988	23 24	FAS Fw FAS Rev	GCTGCGGAACTTCAGGAAAT AGAGACGTGTCACTCCTGGACTT
<i>Scd1</i>	NM_009127	25 26	SCD-1 Fw SCD-1 Rev	CCGGAGACCCCTTAGATCGA TAGCCTGTAAAAGATTCTGCAAACC
<i>Cypb</i>	NM_011149	27 28	CYCLO Fw CYCLO Rev	TGGAGAGCACCAAGACAGACA TGCCGGAGTCGACAATGAT

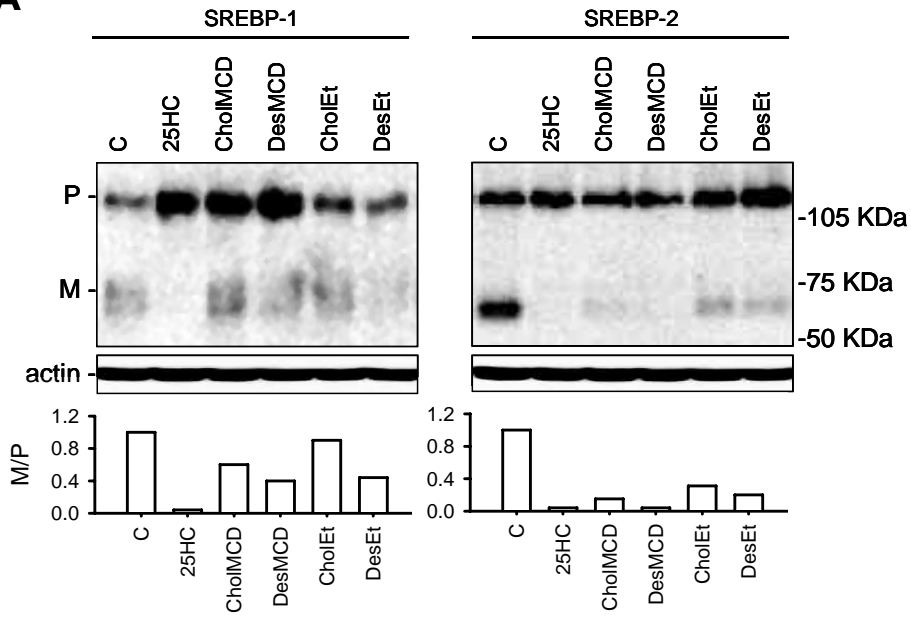
SUPPLEMENTARY FIGURE LEGENDS

Supplementary Figure S1. Effect of 25HC, cholesterol and desmosterol on the SREBP pathway in sterol deprived parental J774 cells. Cells were incubated in 2.5% LPDS supplemented with 1% HPCD, 2.5 μ M lovastatin and 0.1 mM mevalonate for 1 h. Then, cells were switched to the same medium but without HPCD. The rest of conditions were as those described in Figure 4. **(A)** Western blot analysis of SREBP-1 and SREBP-2 processing. **(B)** *Hmgcr*, *Ldlr* and *Insig1* mRNA levels. **(C)** Western blot analysis of HMG-CoA reductase and LDLR protein levels.

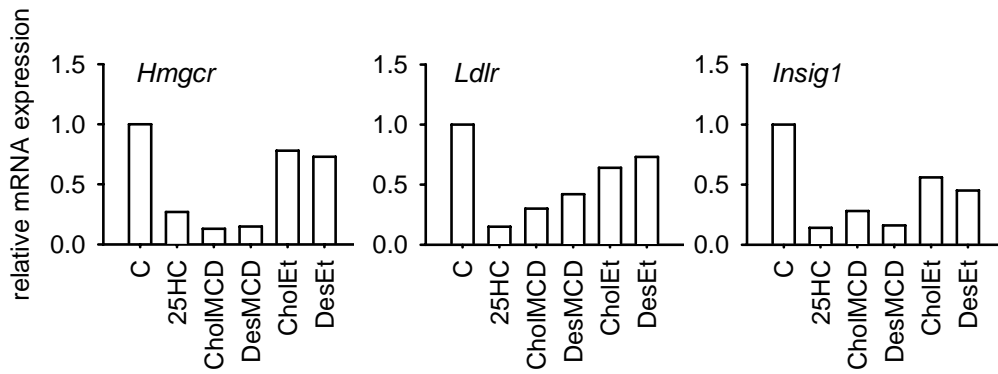
Supplementary Figure S2. Effect of 25HC, cholesterol and desmosterol on the SREBP pathway in sterol deprived L cells. L-cell mouse fibroblasts (ATCC CRL-2648) were maintained in low glucose (1 μ g/mL) DMEM (PAA) supplemented with 10% LPDS. For the experiments, cells were treated as indicated in Supplementary Figure 1. **(A)** Western blot analysis of SREBP-1 and SREBP-2 processing. **(B)** *Hmgcr*, *Ldlr* and *Insig1* mRNA levels. **(C)** Western blot analysis of HMG-CoA reductase and LDLR protein levels.

Supplementary Figure S1

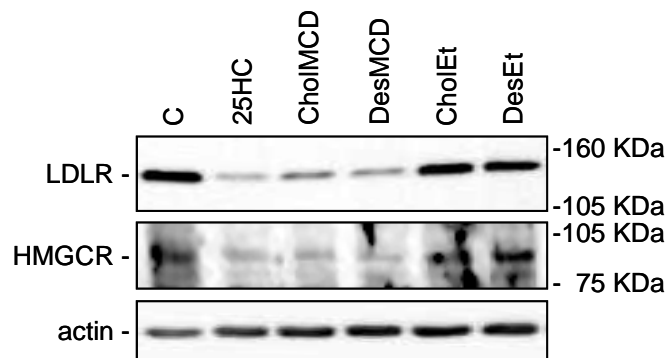
A



B



C



Supplementary Figure S2

