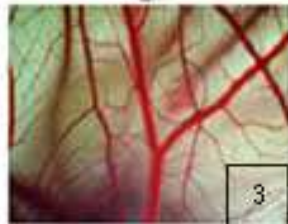
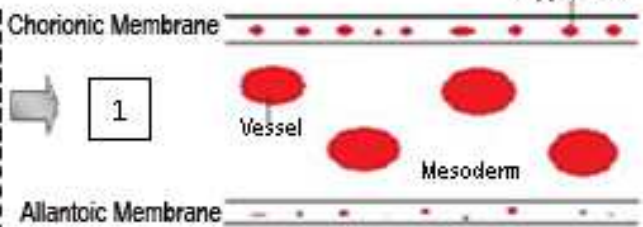


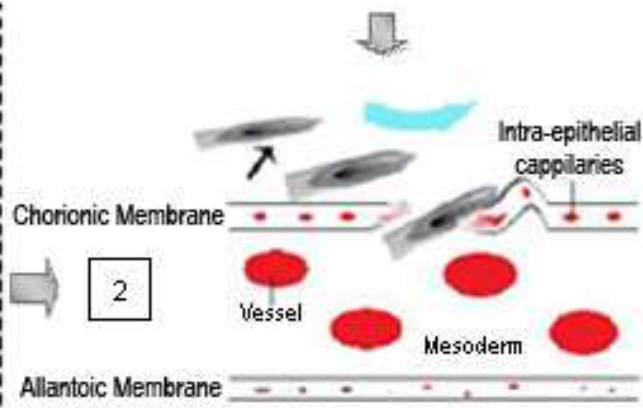
**ESM\_4** Illustration of the tumor implantation technique: 1. implantation location; 2. scratching of epithelium; 3. blood smear; 4. cleaning the severed area; 5. placement of the tumor spheroid onto the implantation site; 7. engulfment of the tumor spheroid (1mm spheroid)



**1.** Choose implantation site adjacent to a large vessel on the CAM.



**2.** With a 30G hypodermic needle attached to a 1cc syringe, scratch away surface of CAM with the needle's bevel.

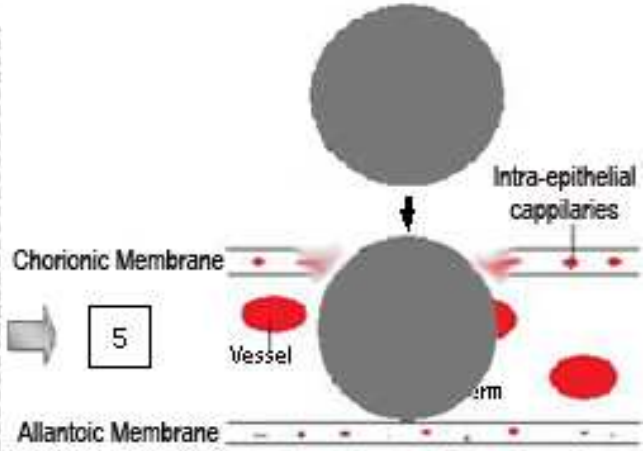


**3.** A blood smear develops  
**4.** Clean the area by sucking the blood and debris.

**2**



**5.** Using a spatula, drop the tumor spheroid into the severed area.



**6.** Cover the dish with a breathable sheet, and return embryo to the incubator.

**5**



**7.** After 24 hrs of incubation, tumor spheroid rests inside the CAM mesoderm, and the severed epithelium has healed over the spheroid.

