

Figure S1 - LaBarge et al

The CD49f+/CD29hi subset of the D920 cell line are bipotent human mammary progenitors that form TDLU and self-renew.

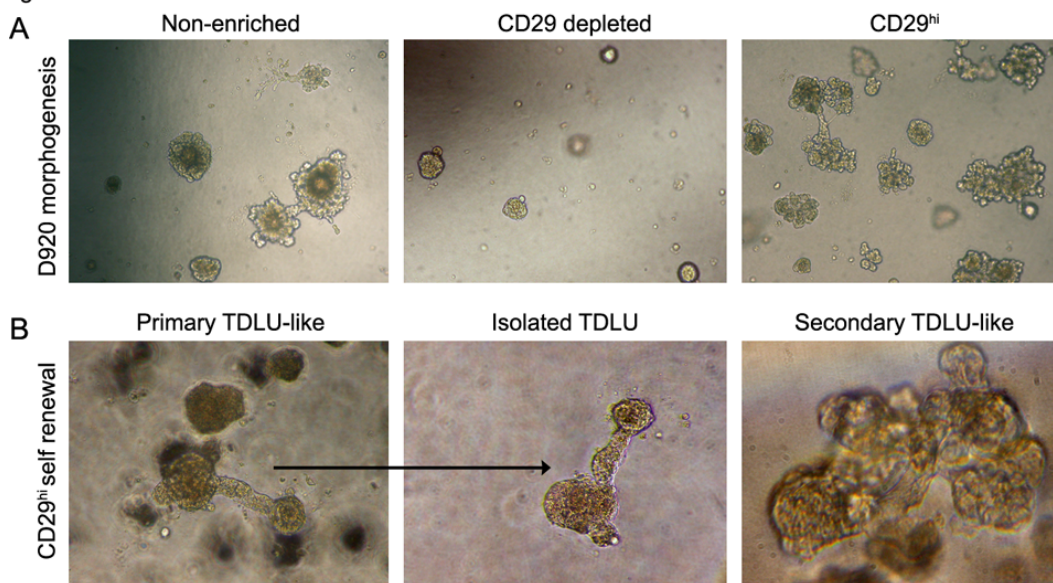


Figure S2 - LaBarge et al

Laminin1, Jagged1, and P-cadherin are important effectors of mammary progenitor cell functions.

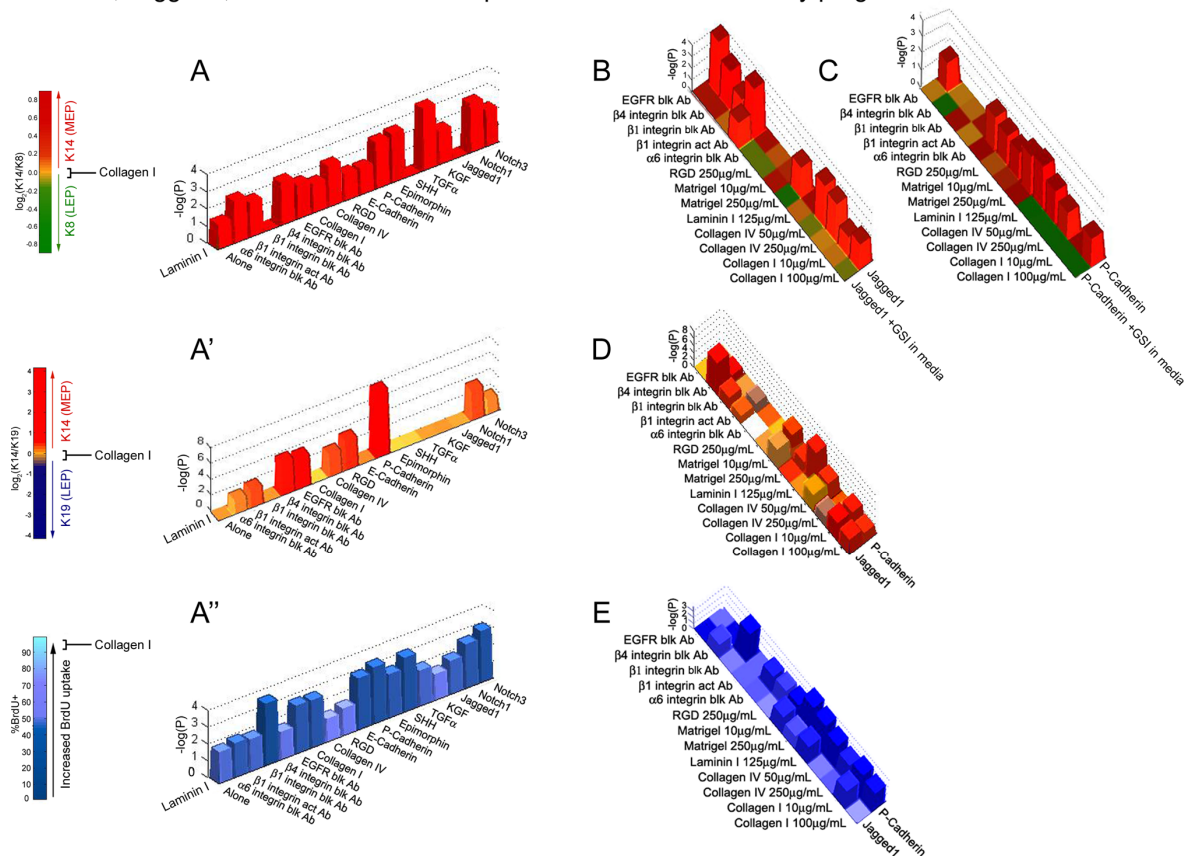


Figure S3 - LaBarge et al

Recombinant Jagged1 and P-cadherin impose cell phenotypes in a dose-dependent manner

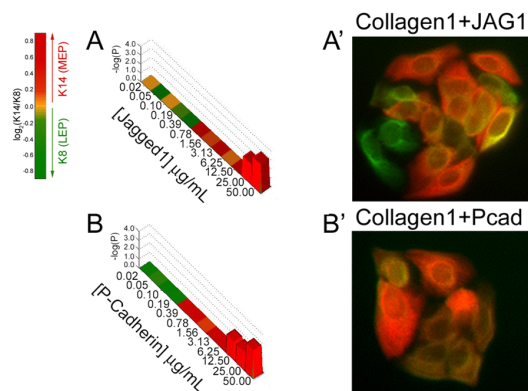


Figure S4 - LaBarge et al

Progenitors, separated from any other cell either exhibit the K14+/K19+ progenitor or K14+/K19- MEP phenotype.

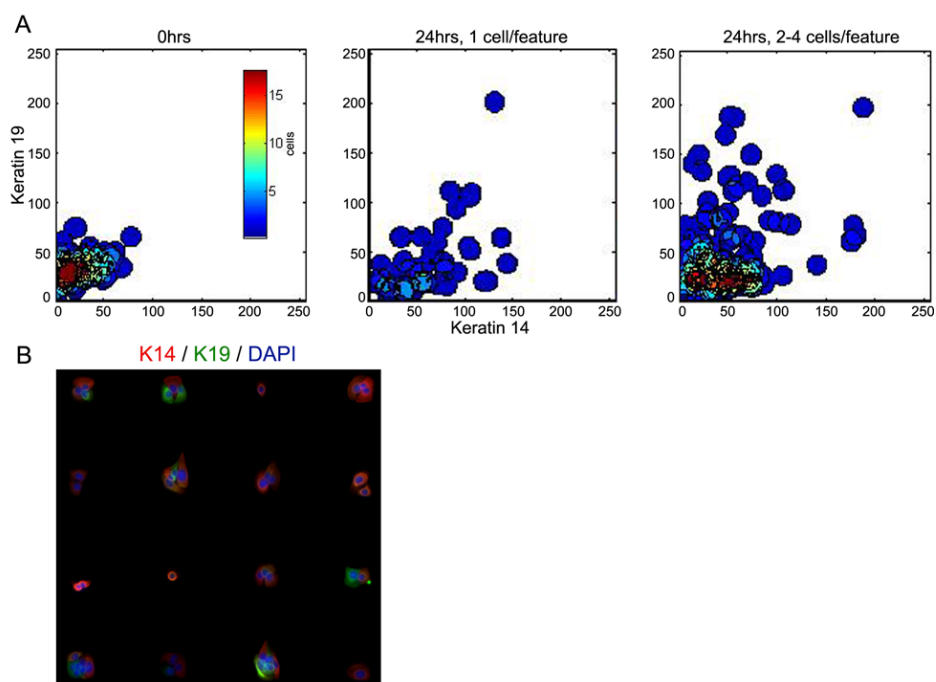
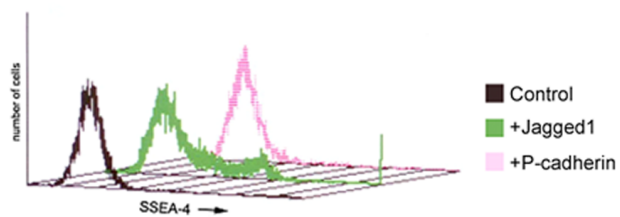


Figure S5 -LaBarge et al

Proteins characteristic of stem cells and MEP are increased upon treatment with Jagged1 or P-cadherin, respectively

A



B

