

## Supporting information

Additional supporting information may be found in the online version of this article.

**Fig S1.** Detailed gene expression of death receptor family in normal B cells, normal and tumor plasma cells and bone marrow environment cells. Histograms show the gene signal intensity determined with Affymetrix microarrays. Each histogram features an individual sample, MBC (6), PPC (7), BMPC (7) and MMC (92). White histograms mean that the gene is not expressed.

**Fig S2.** Detailed gene expression of antiapoptotic Bcl-2 family members in normal B cells, normal and tumor plasma cells.

**Fig S3.** Detailed gene expression of proapoptotic Bcl-2 family members in normal B cells, normal and tumor plasma cells.

**Fig S4.** Detailed gene expression of mitochondrial mediators of apoptosis.

**Fig S5.** Detailed gene expression of caspase family members in normal B cells, normal and tumor plasma cells.

**Fig S6.** Detailed gene expression of IAP family members in normal B cells, normal and tumor plasma cells.

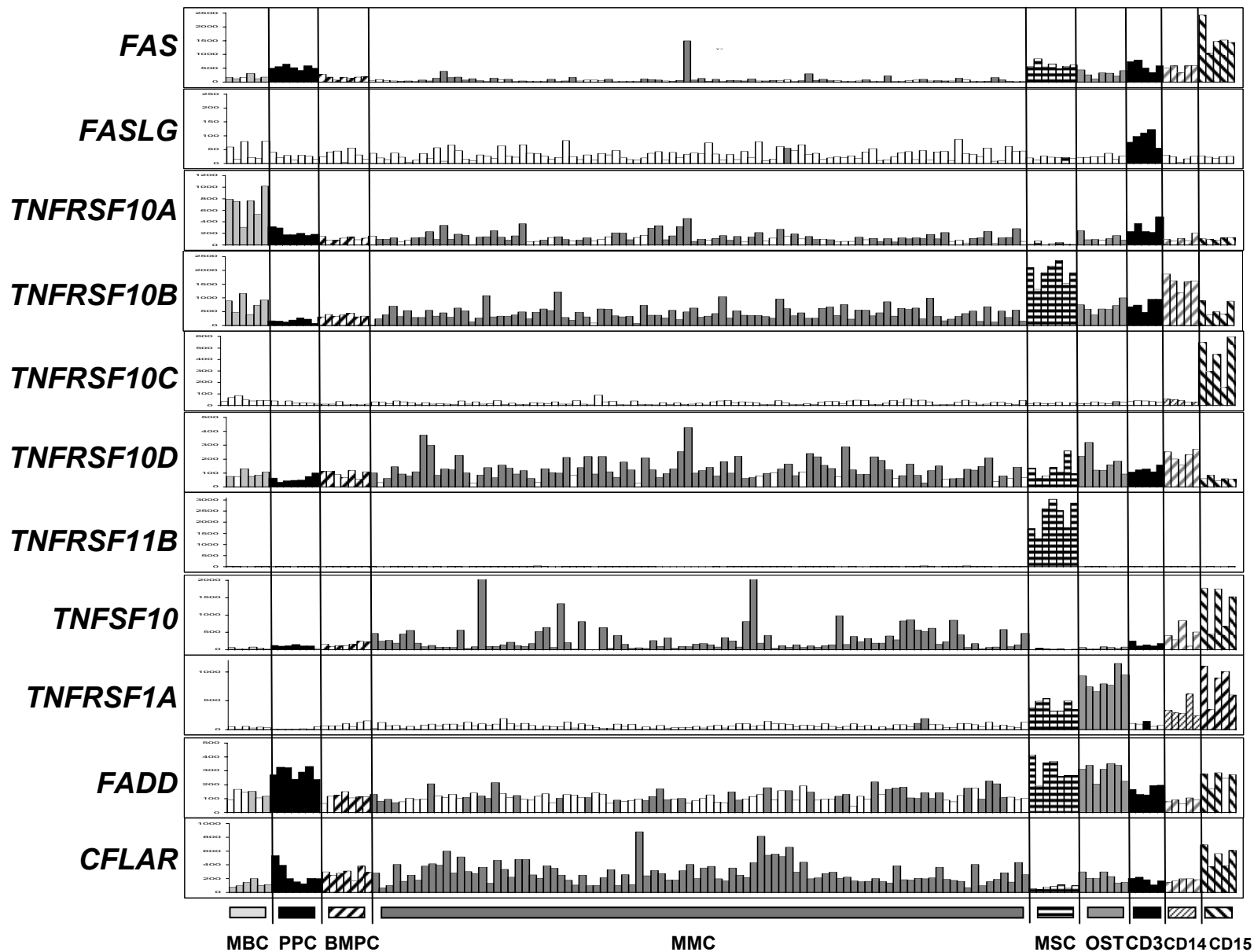


Figure S1

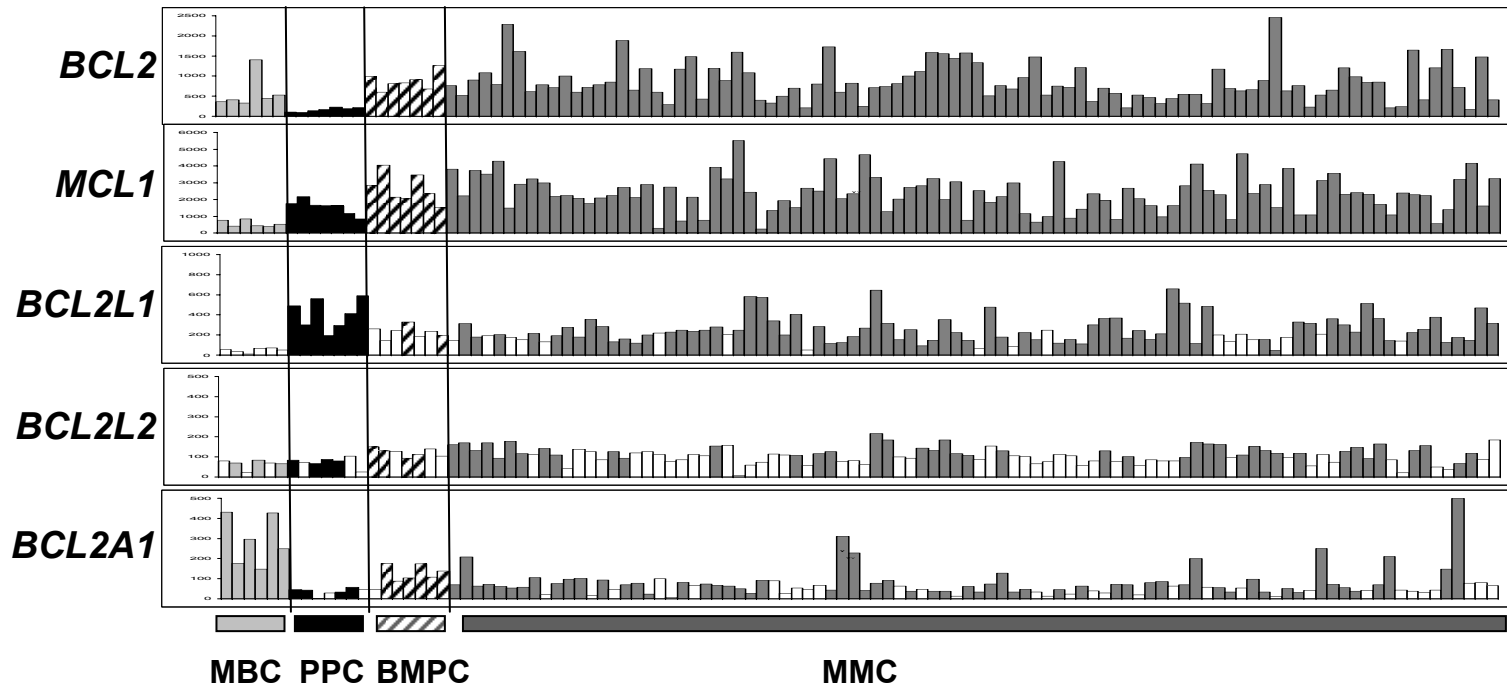


Figure S2

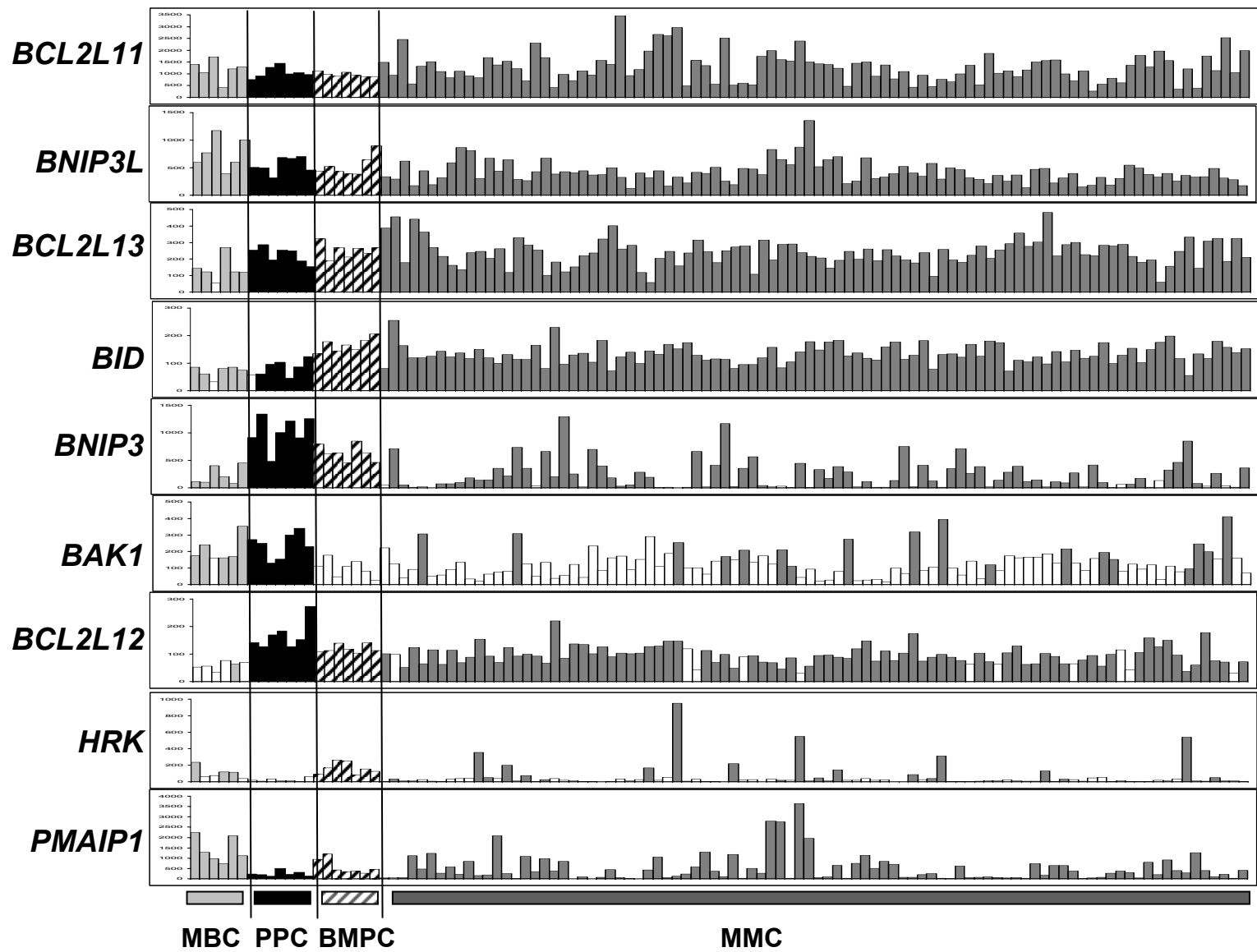


Figure S3

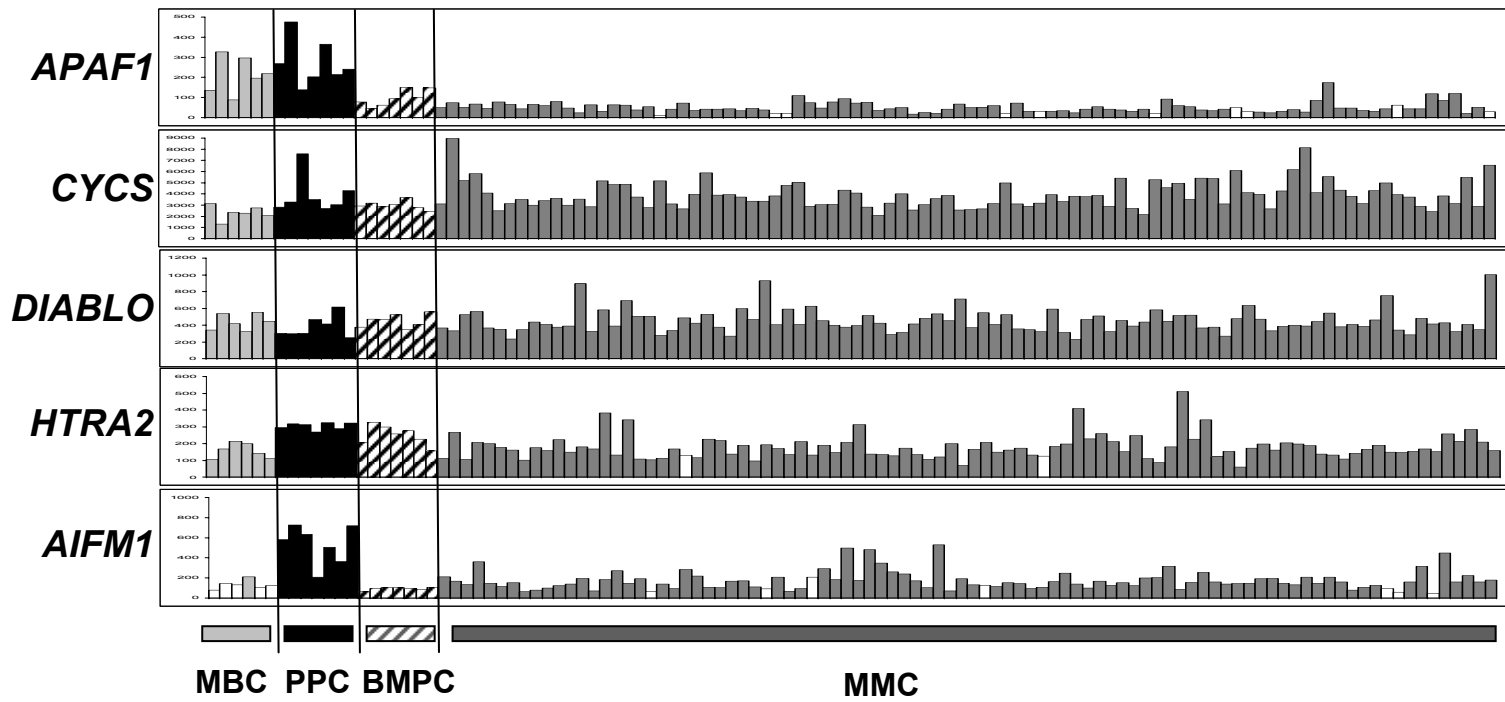


Figure S4

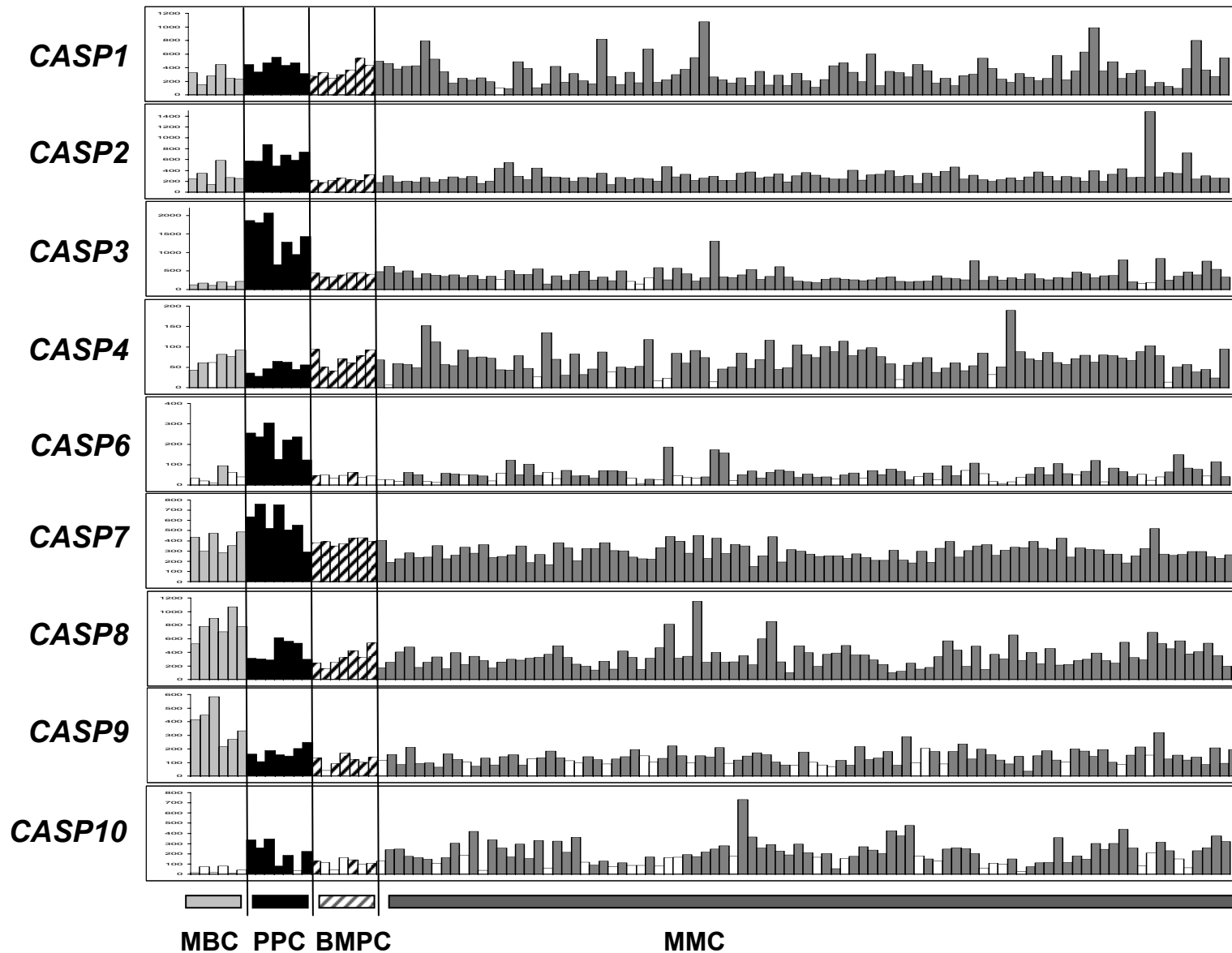


Figure S5

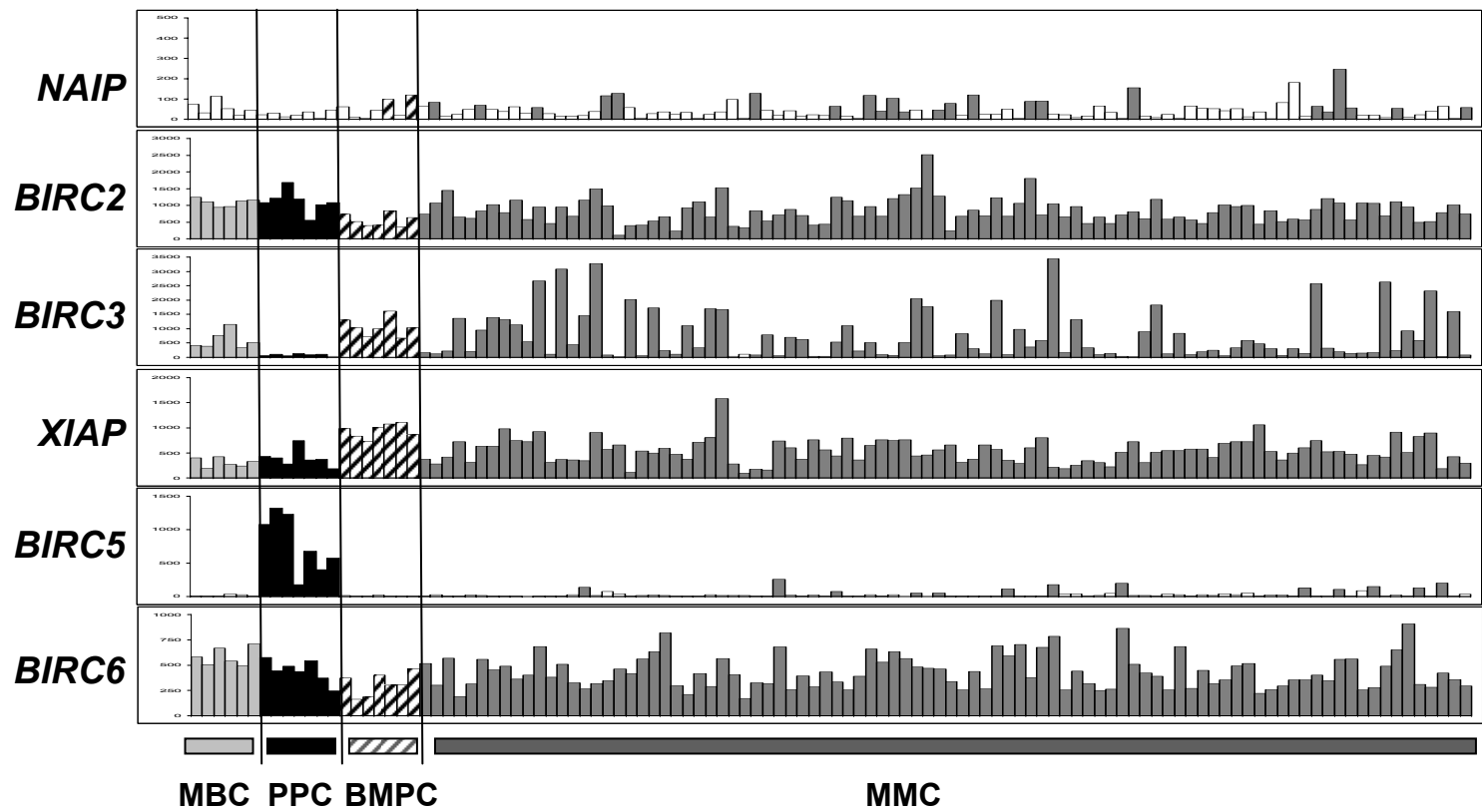


Figure S6