

SUPPLEMENTAL FIGURES AND FIGURE LEGENDS

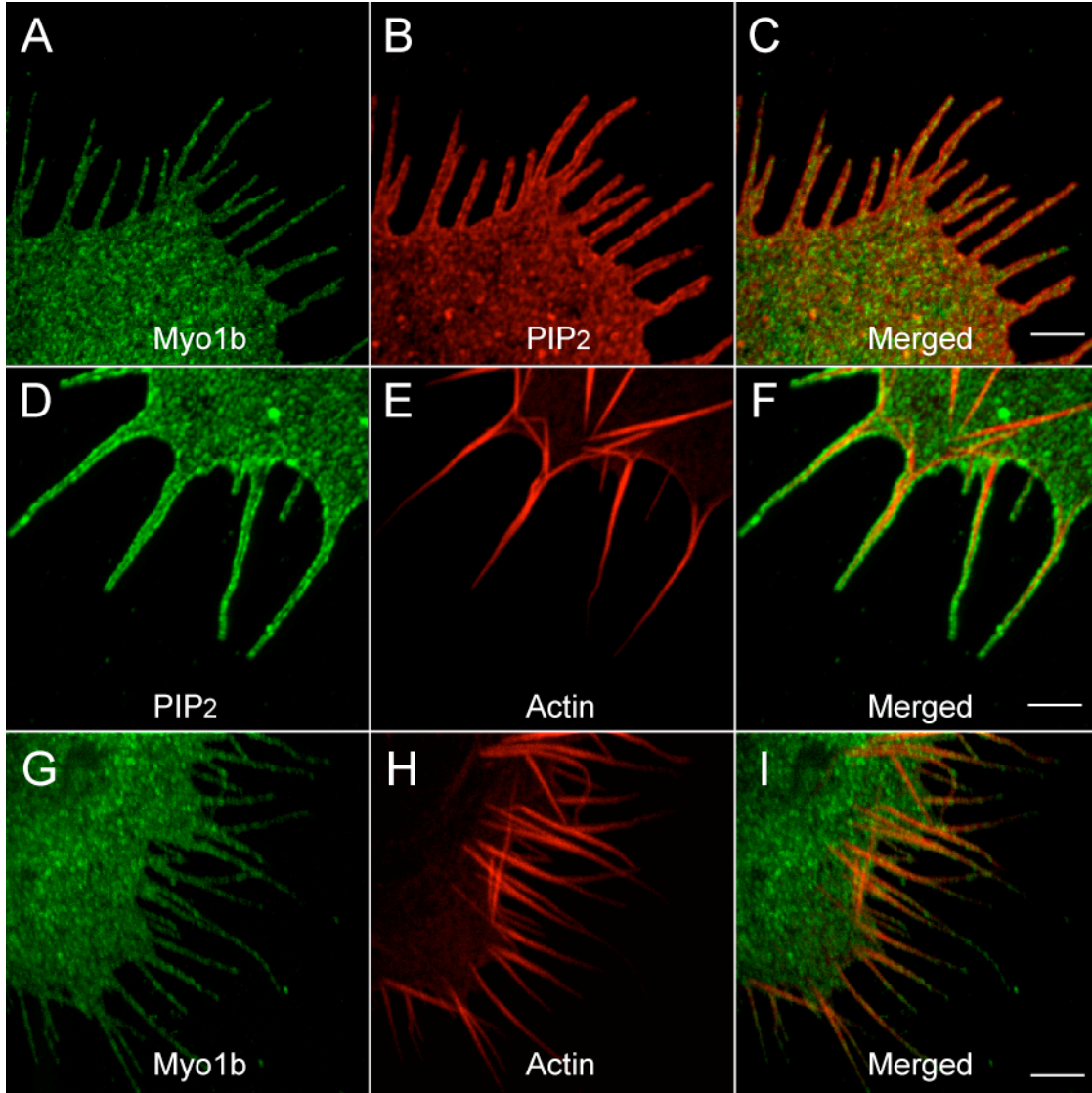


FIGURE S1. Localization of Myo1b, PIP₂ and actin in COS-7 cells with espin-induced filopodia. COS-7 cells were co-transfected with myc-tagged full-length wild-type Myo1b and untagged espin. Transfected cells were stained with anti-myc (*A* and *G*, green), anti-PIP₂ (*B*, red and *D*, green) and rhodamine phalloidin (*E* and *H*, red). Panels *C*, *F* and *I* are merged images of (*A* and *B*), (*D* and *E*), and (*G* and *H*), respectively. Myo1b colocalized with actin within the filopodial membrane containing PIP₂. Bars, 5 μm.

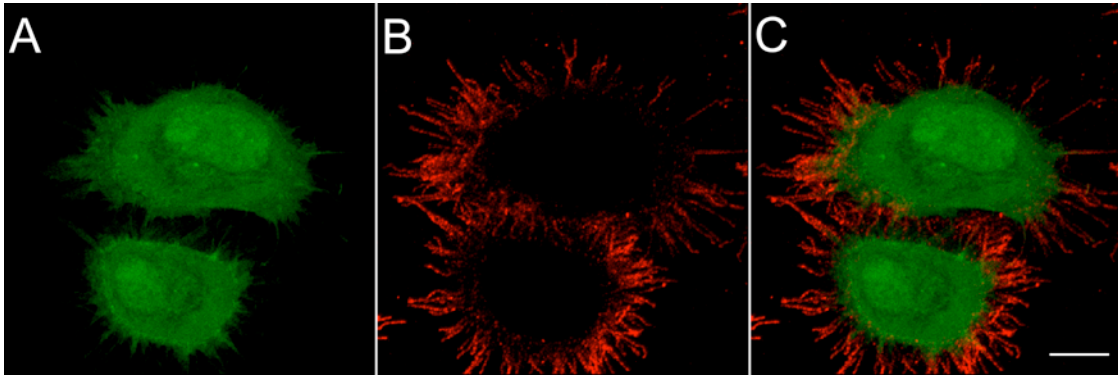


FIGURE S2. Diffuse localization of Btk-PH-GFP in HeLa cells. HeLa cells were transfected with Btk-PH-GFP, a PIP₃-specific binding protein, and stained with anti-PIP₂. Btk-PH-GFP localized throughout the cytoplasm and nucleus, but not in filopodia (*A*), a pattern distinct from that of PIP₂ (*B* and *C*). Bar, 10 μ m.