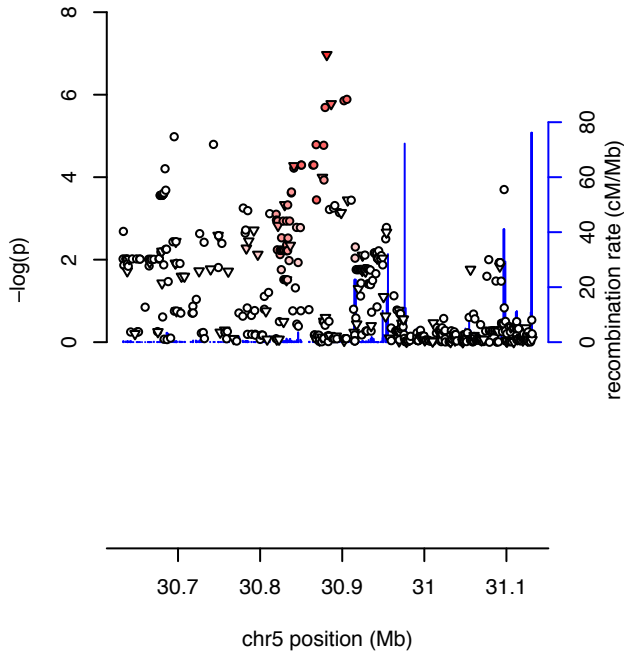
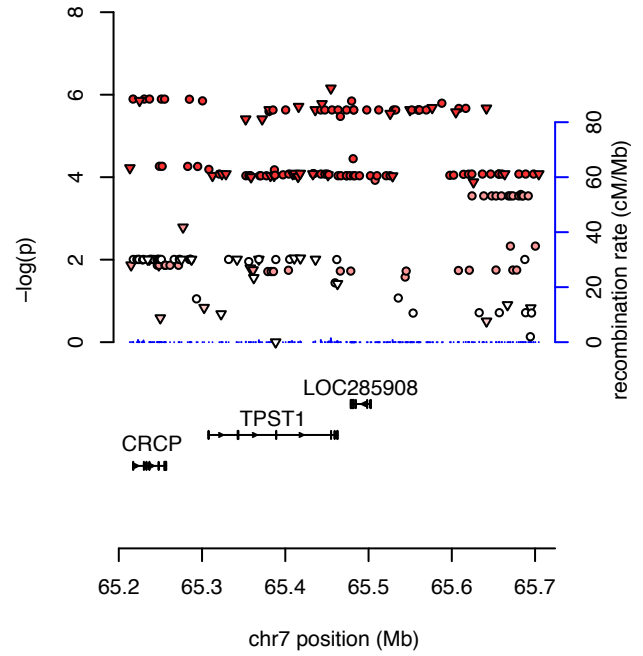


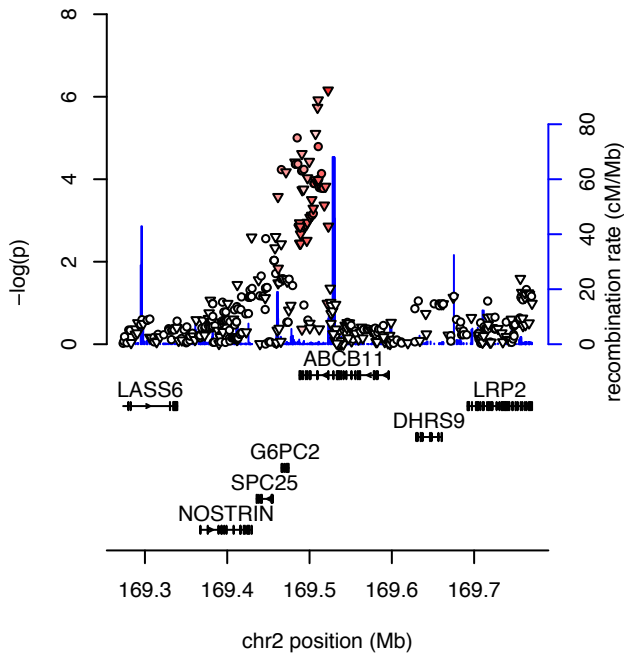
dbp\_corExp\_SNP 5p13.3 rs7704530



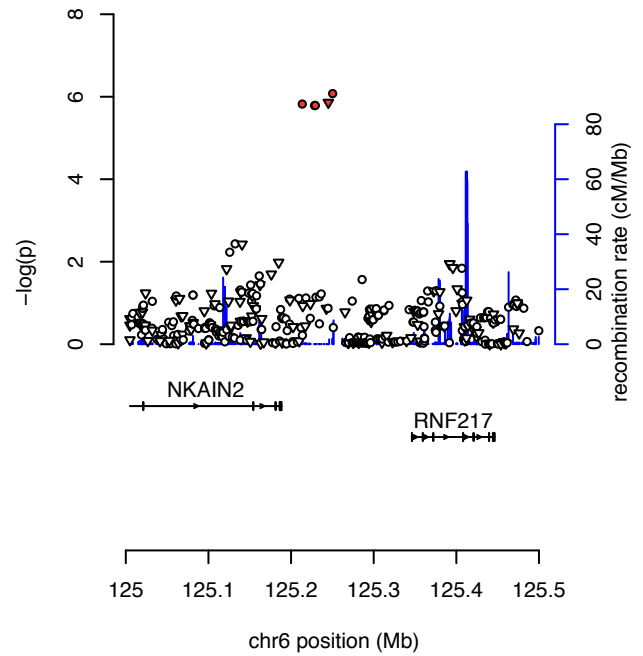
dbp\_corExp\_SNP 7q11.21 rs709595



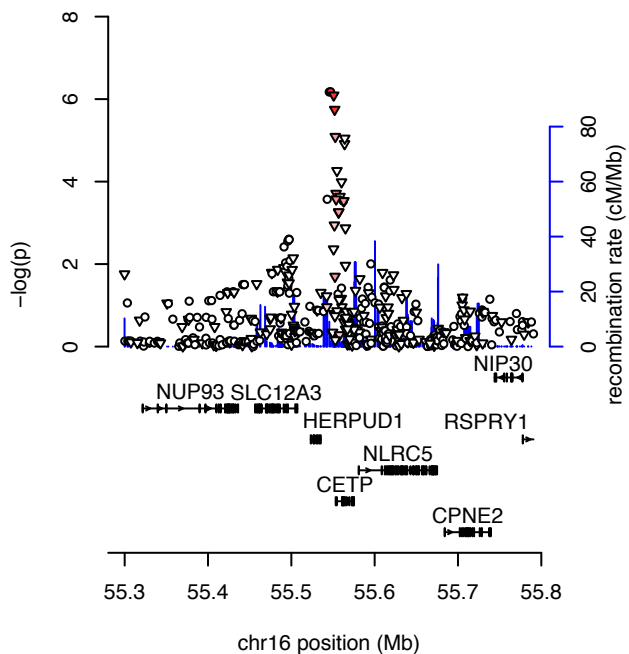
glu\_corRatio\_SNP 2q24.3 rs853773



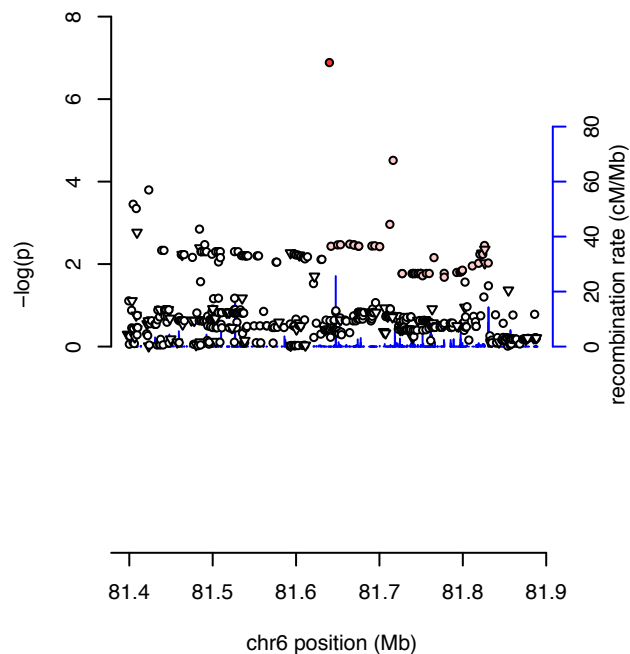
glu\_corRatio\_SNP 6q22.31 rs781718



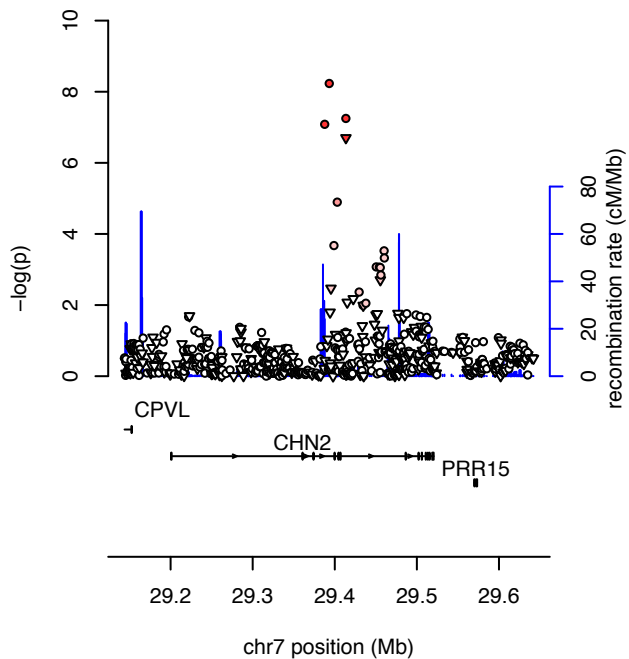
hdlc\_corExp\_SNP 16q12.2 rs247616



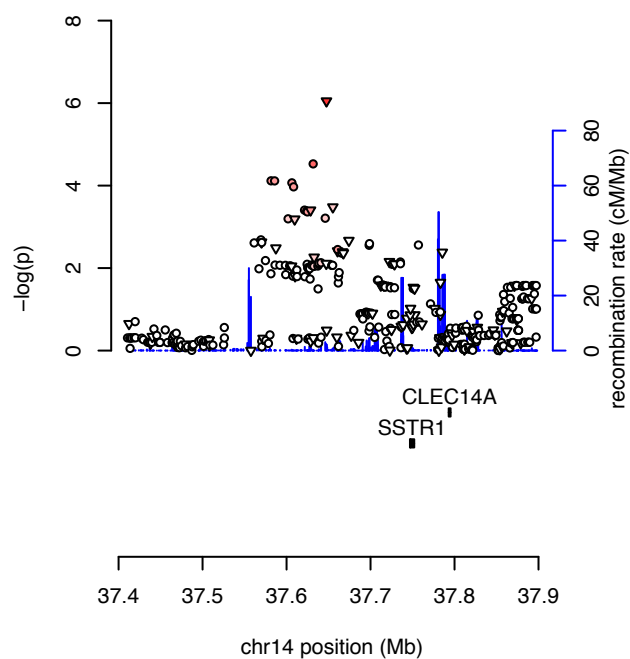
ins\_corRatio\_SNP 6q14.1 rs16892328



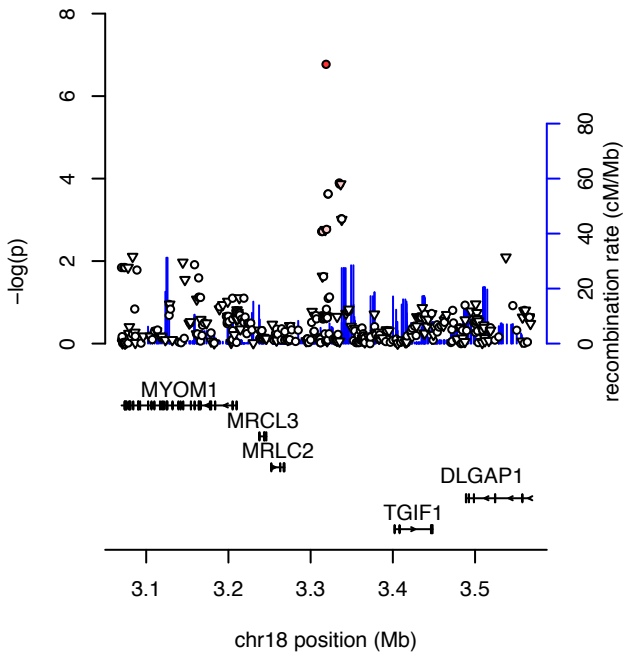
ins\_corRatio\_SNP 7p14.3 rs3793275



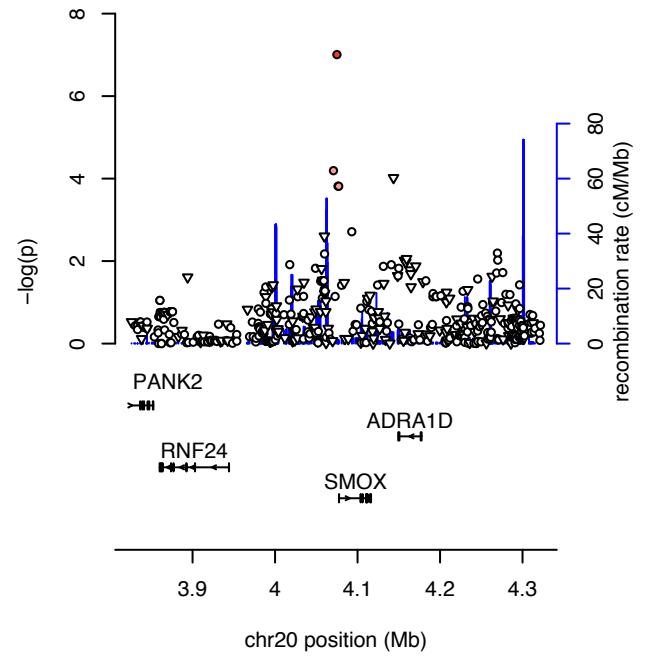
ins\_corRatio\_SNP 14q13.3 rs10498337



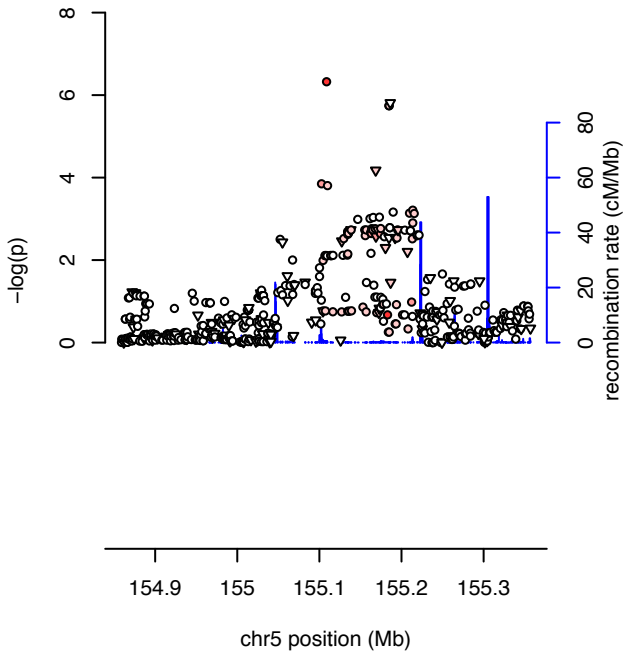
ins\_corRatio\_SNP 18p11.31 rs1613695



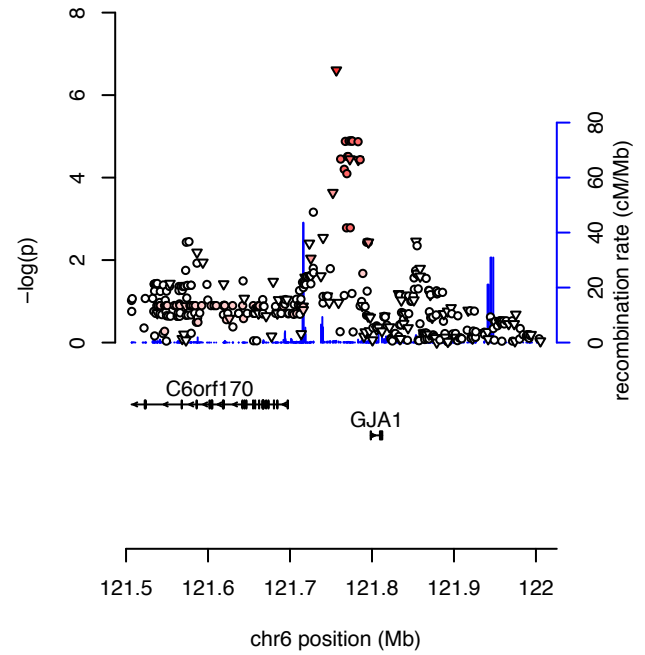
ins\_corRatio\_SNP 20p13 rs6052399



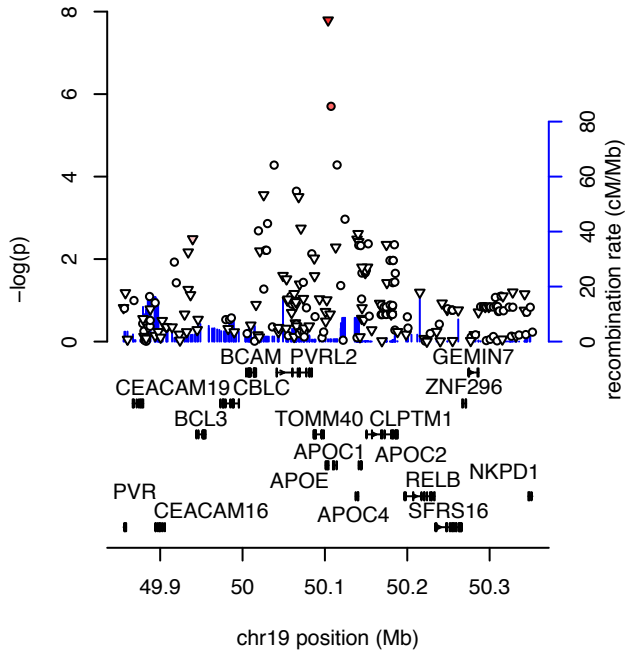
ldlc\_corRatio\_SNP 5q33.2 rs10044666



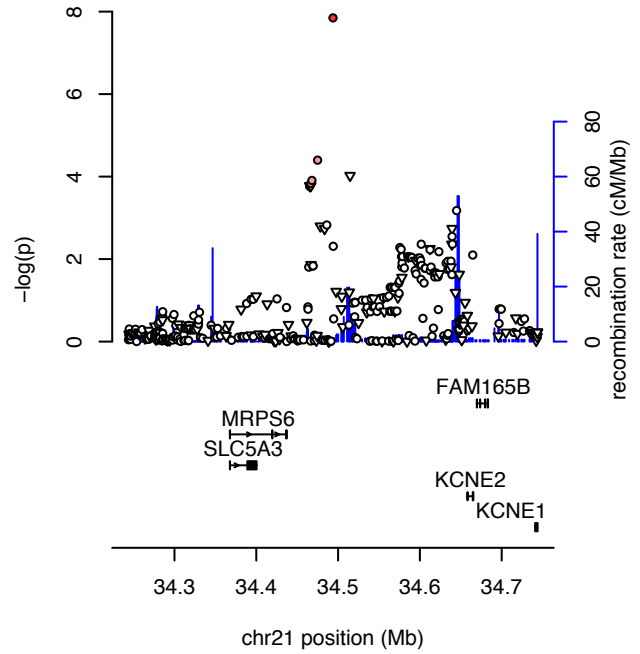
ldlc\_corRatio\_SNP 6q22.31 rs7738656



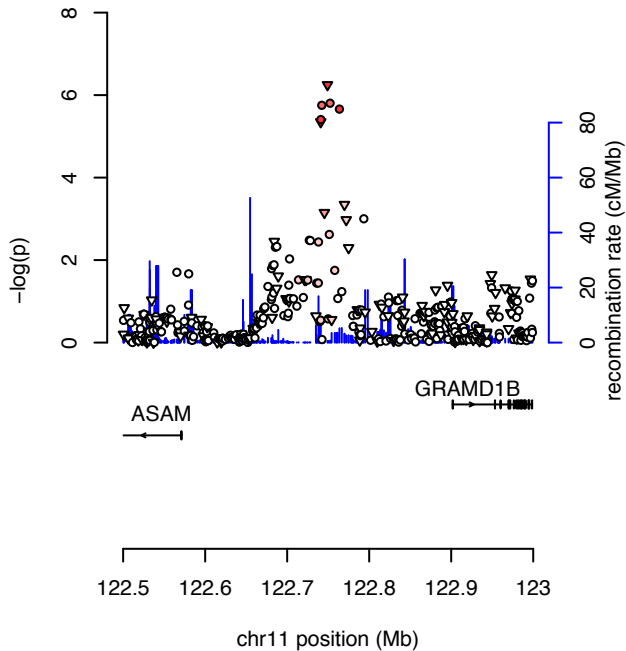
**ldlc\_corRatio\_SNP 19q13.33 rs7412**



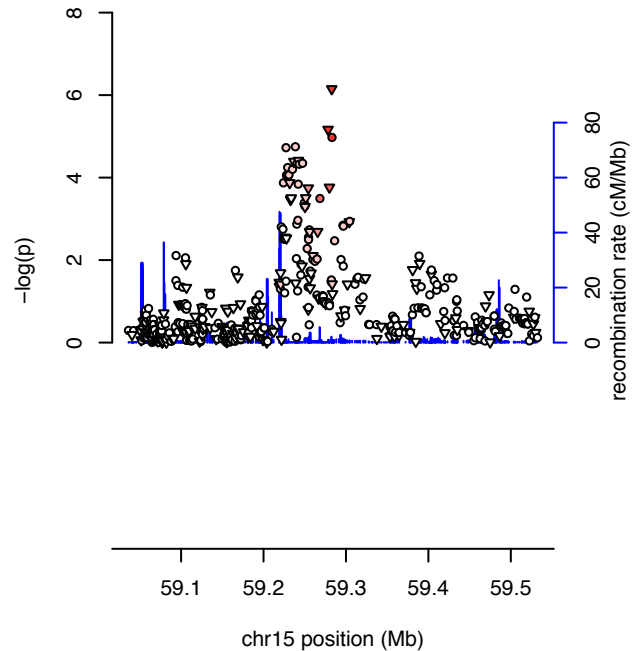
**ldlc\_corRatio\_SNP 21q22.11 rs8131349**



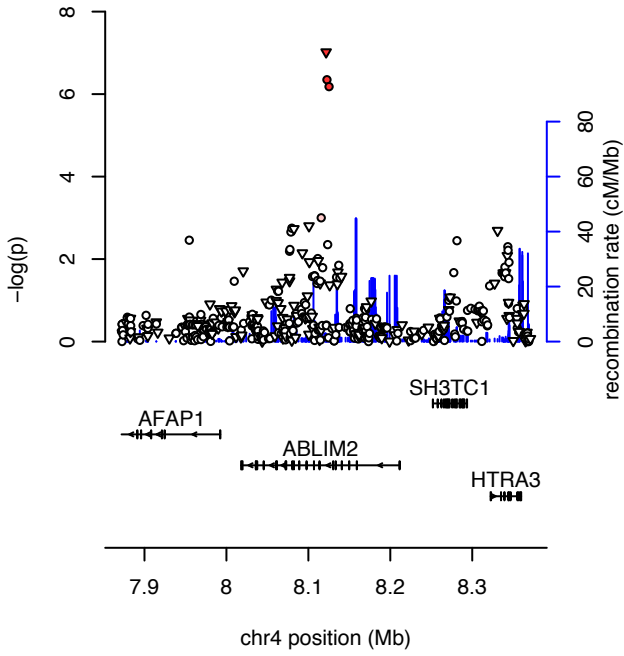
**sbp\_corExp\_SNP 11q24.1 rs11822822**



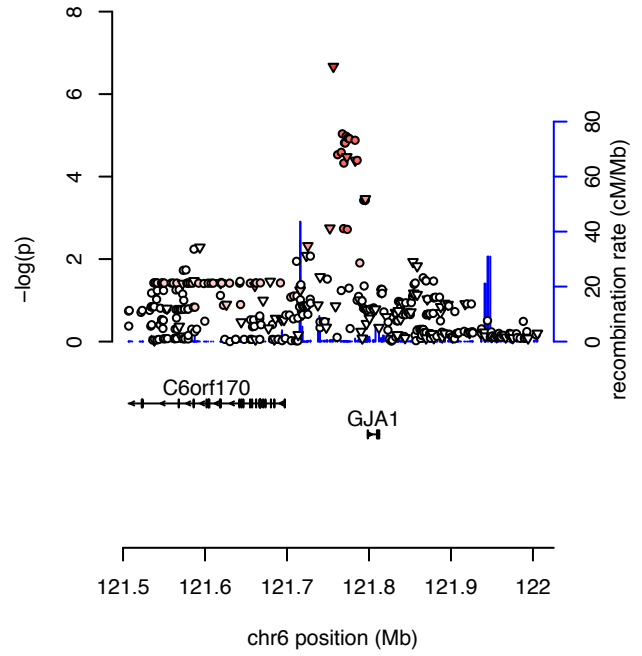
**sbp\_corExp\_SNP 15q22.1 rs726914**



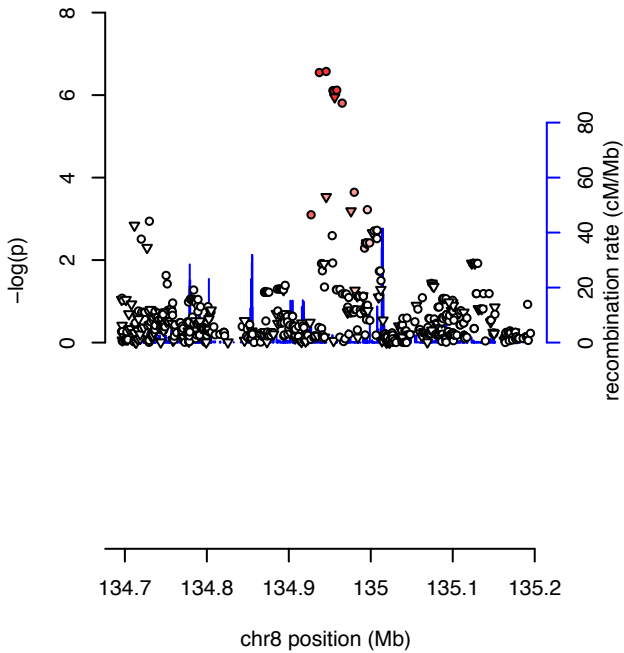
tc\_corRatio\_SNP 4p16.1 rs6829649



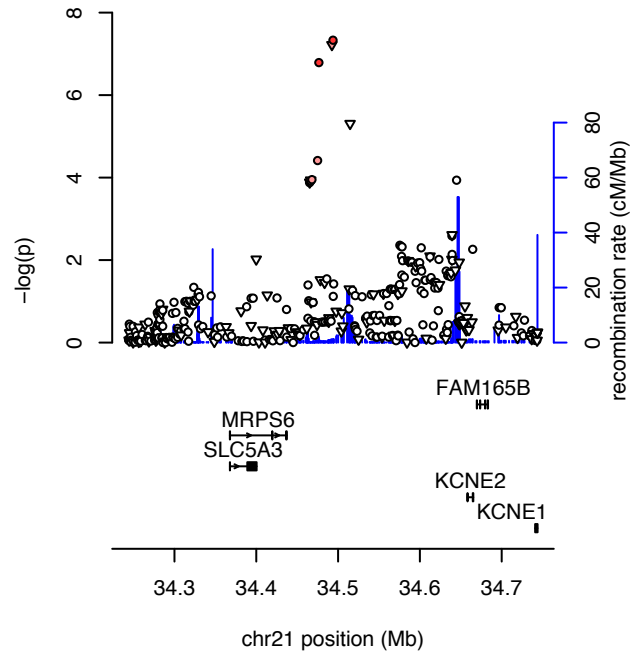
tc\_corRatio\_SNP 6q22.31 rs7738656



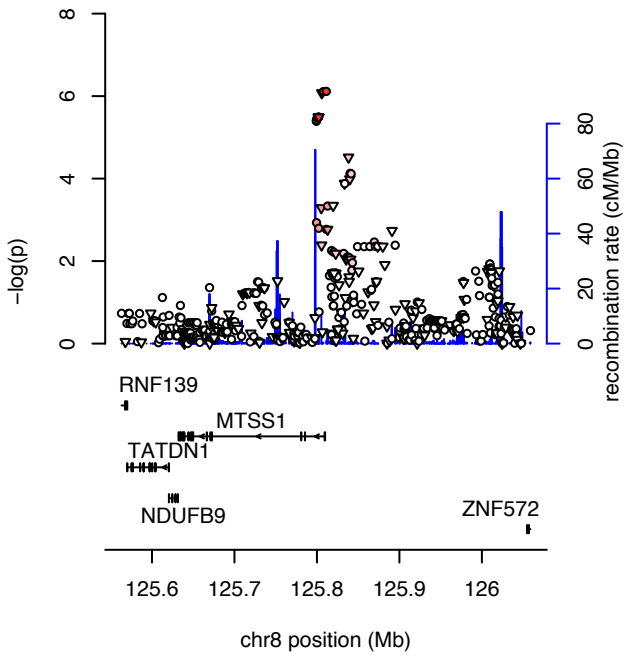
tc\_corRatio\_SNP 8q24.22 rs4897695



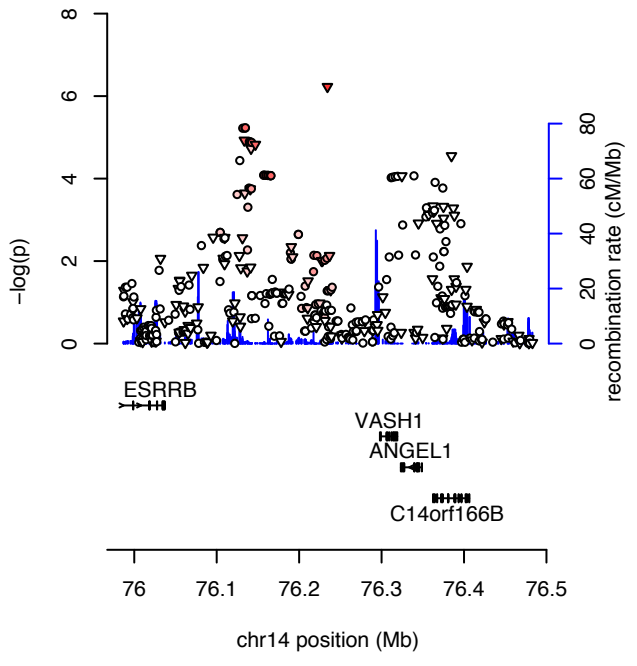
tc\_corRatio\_SNP 21q22.11 rs8131349



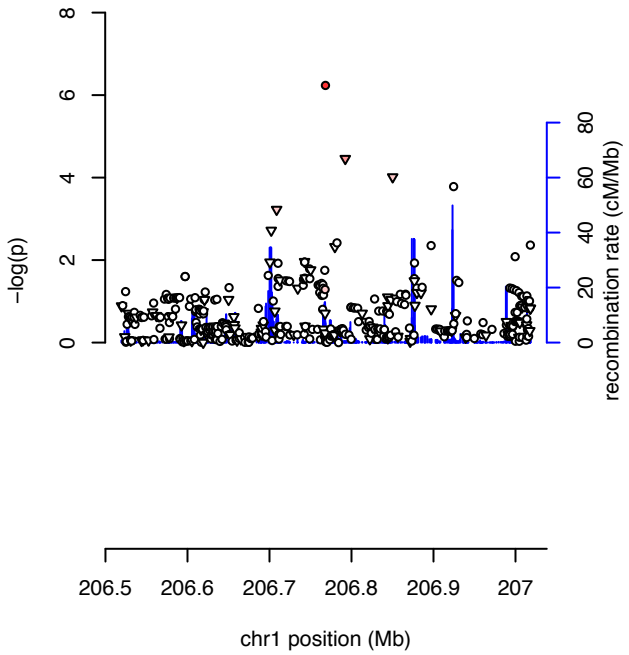
WAIST\_corRatio\_SNP 8q24.13 rs891541



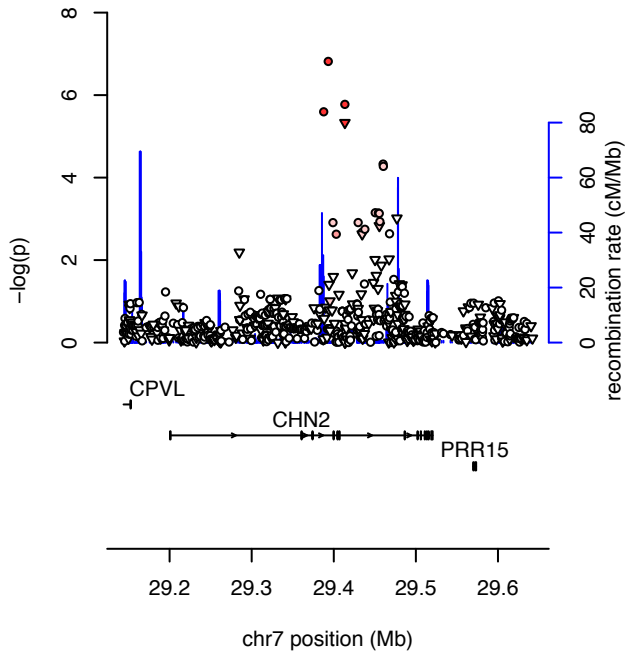
dbp\_corExp\_SNPxAGE 14q24.3 rs17104804



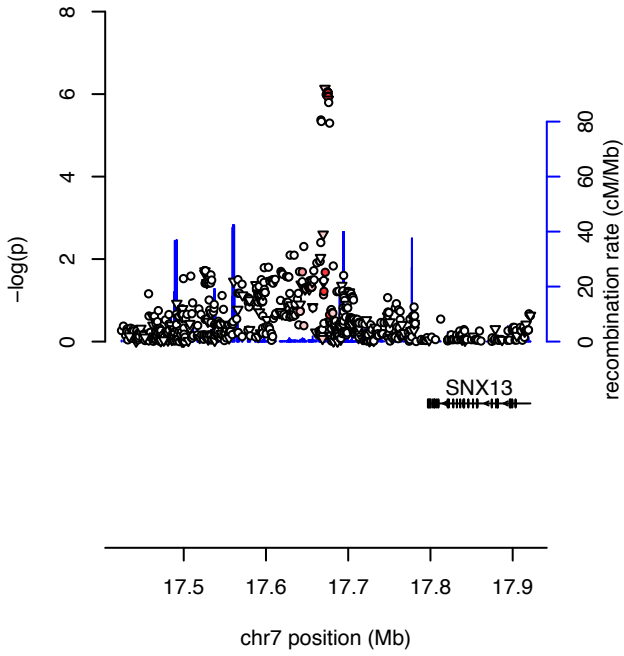
glu\_corRatio\_SNPxAGE 1q32.1 rs12069004



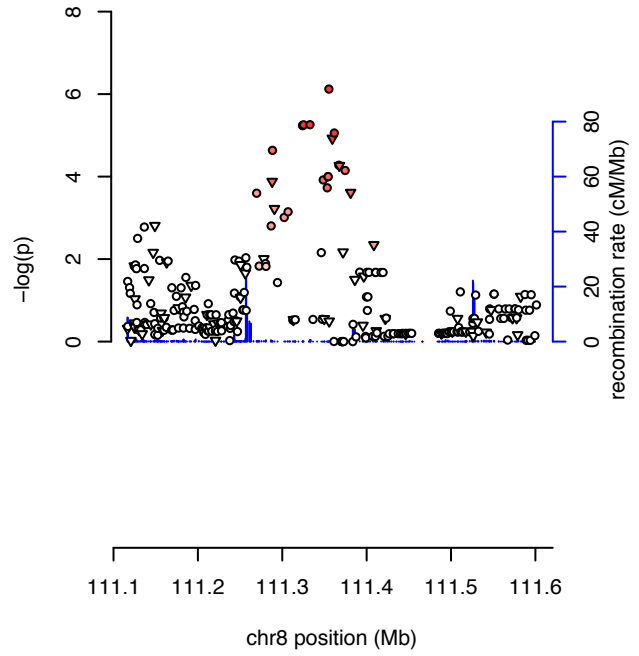
glu\_corRatio\_SNPxAGE 7p14.3 rs3793275



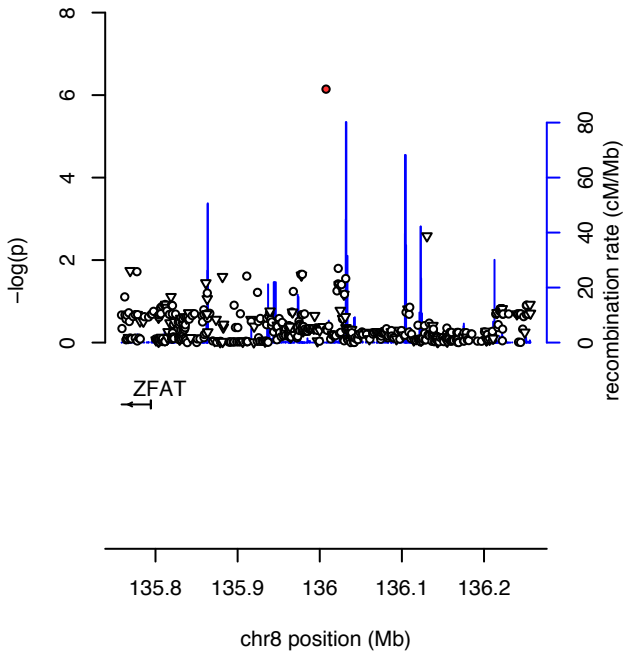
glu\_corRatio\_SNPxAGE 7p21.1 rs10260737



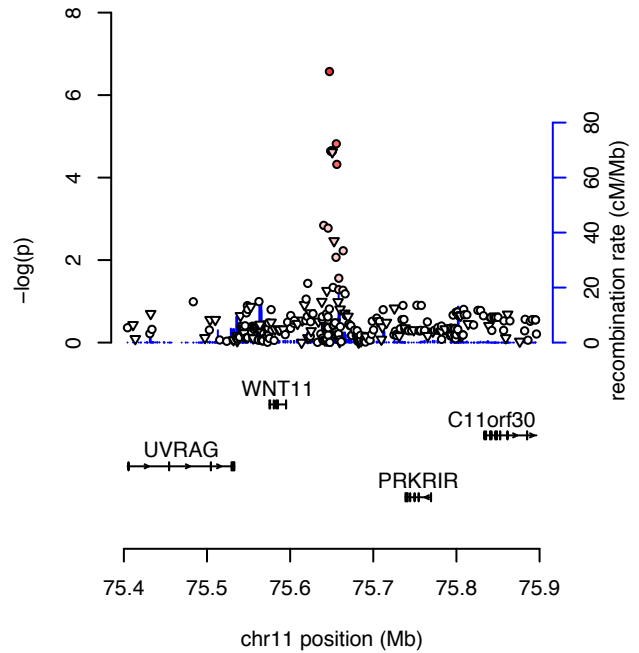
glu\_corRatio\_SNPxAGE 8q23.2 rs3019325



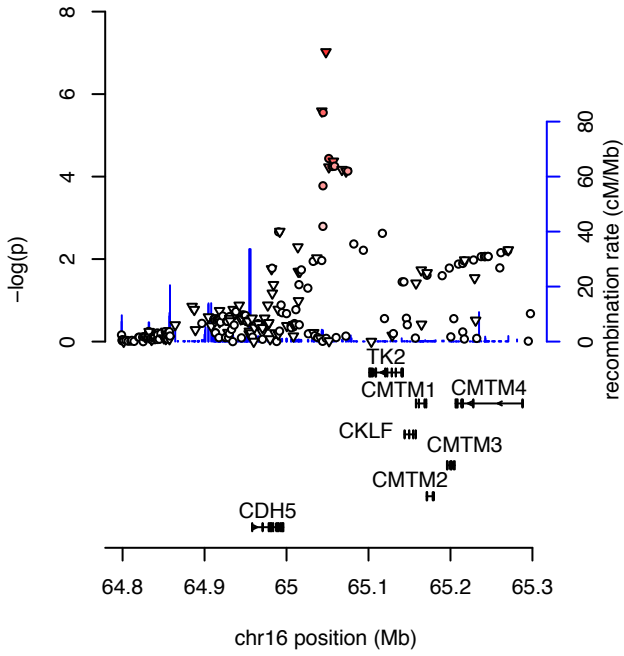
glu\_corRatio\_SNPxAGE 8q24.22 rs12548494



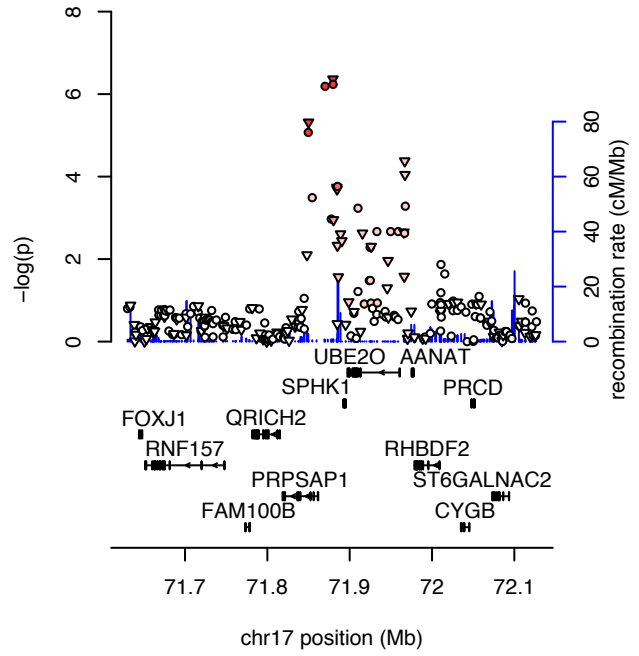
glu\_corRatio\_SNPxAGE 11q13.5 rs12807555



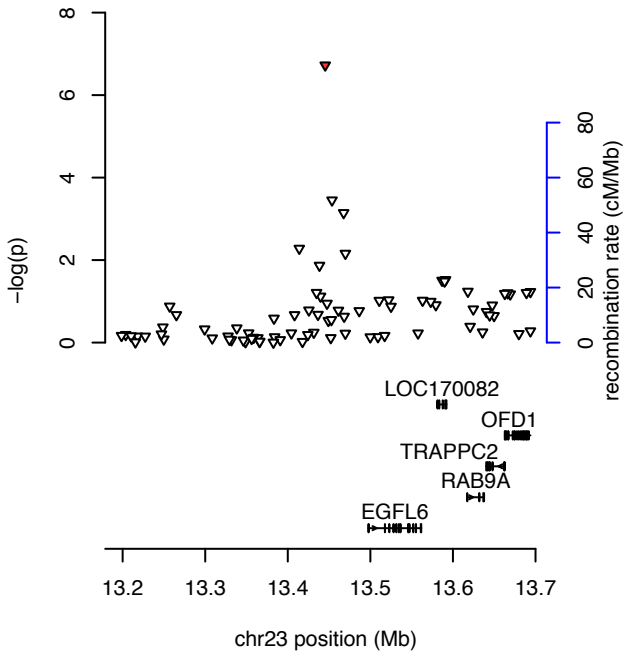
**glu\_corRatio\_SNPxAGE 16q21 rs4783595**



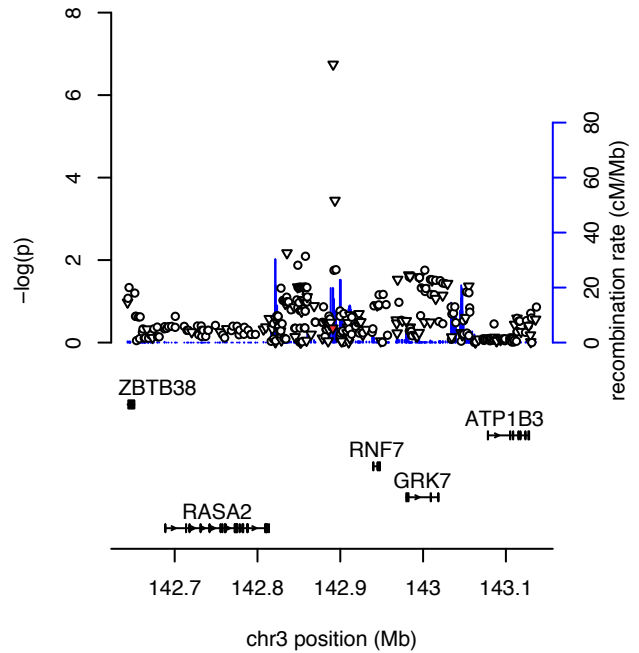
**glu\_corRatio\_SNPxAGE 17q25.1 rs9909931**



**glu\_corRatio\_SNPxAGE Xp22.2 rs5979903**

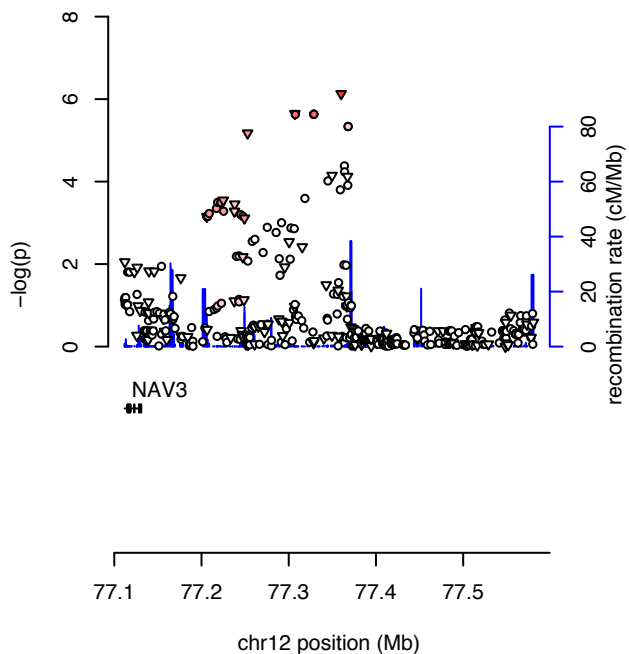


**hr\_corRatio\_SNPxAGE 3q24 rs6440031**

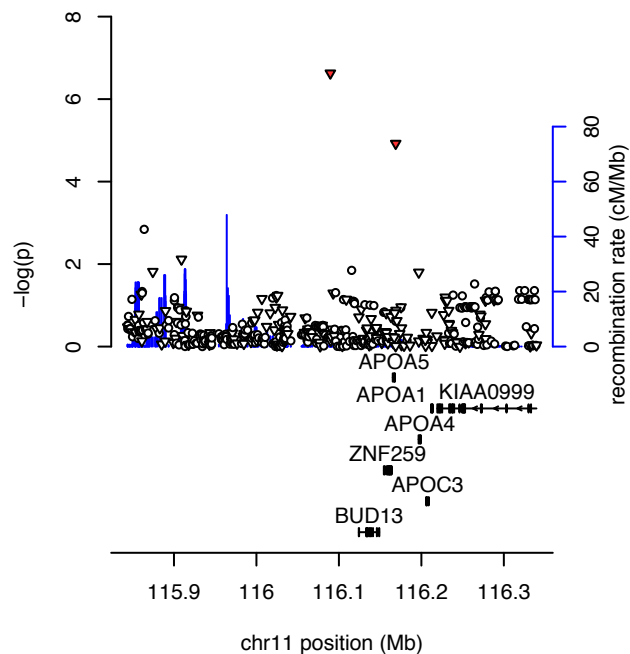




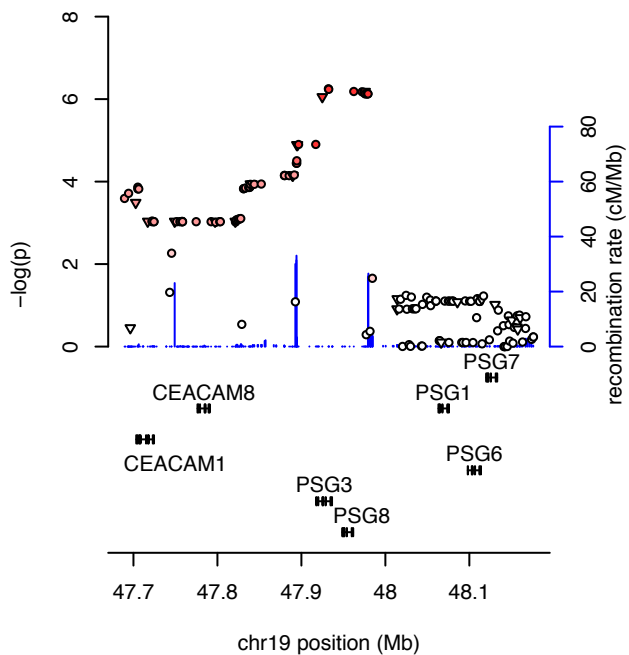
hr\_corRatio\_SNPxAGE 12q21.2 rs1449460



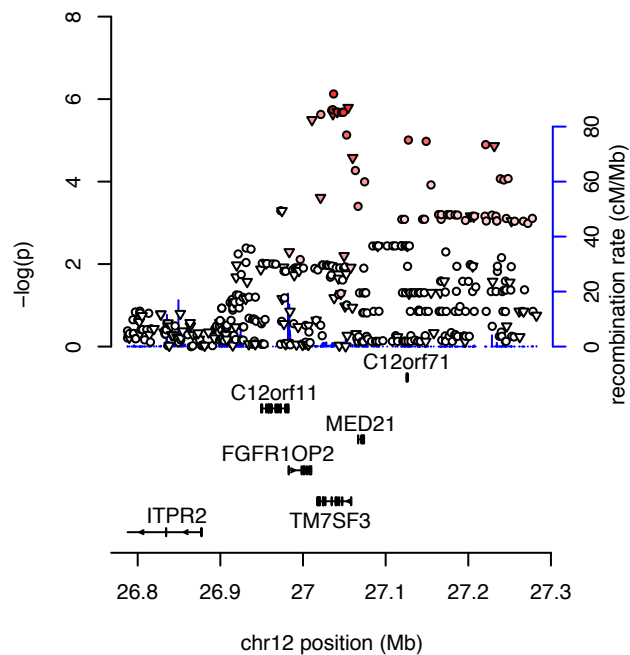
ht\_corLin\_SNPxAGE 11q23.3 rs1144036



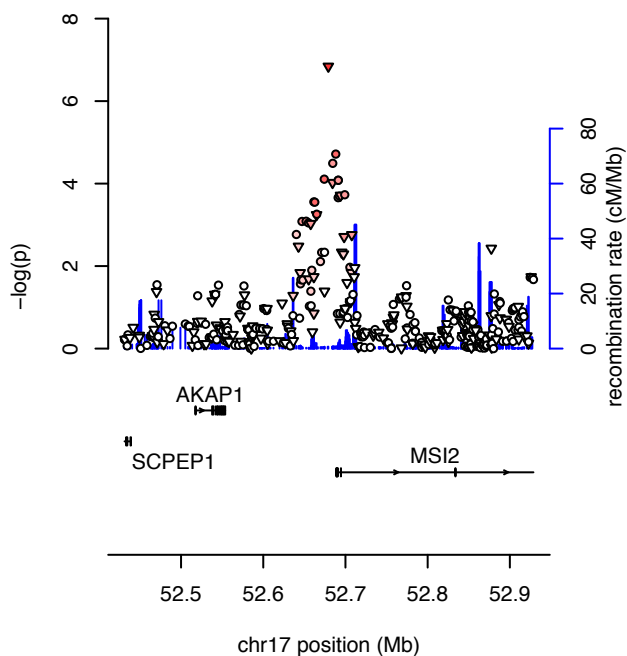
ht\_corLin\_SNPxAGE 19q13.32 rs8103264



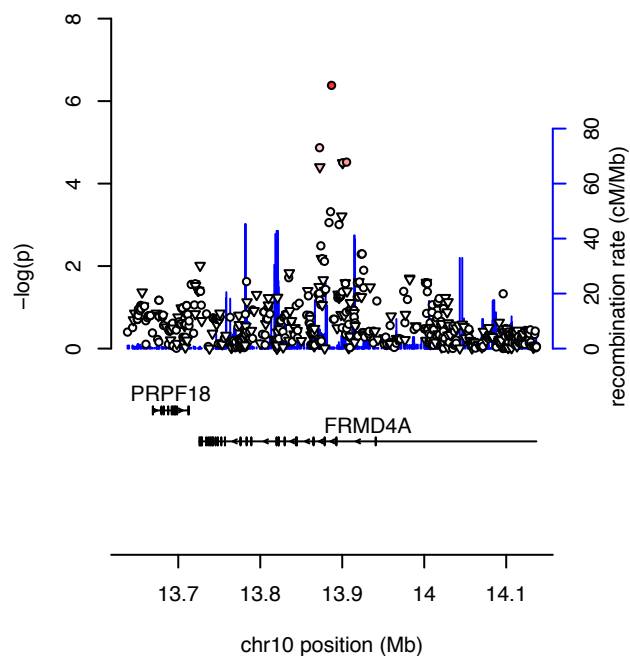
ins\_corRatio\_SNPxAGE 12p11.23 rs1552257



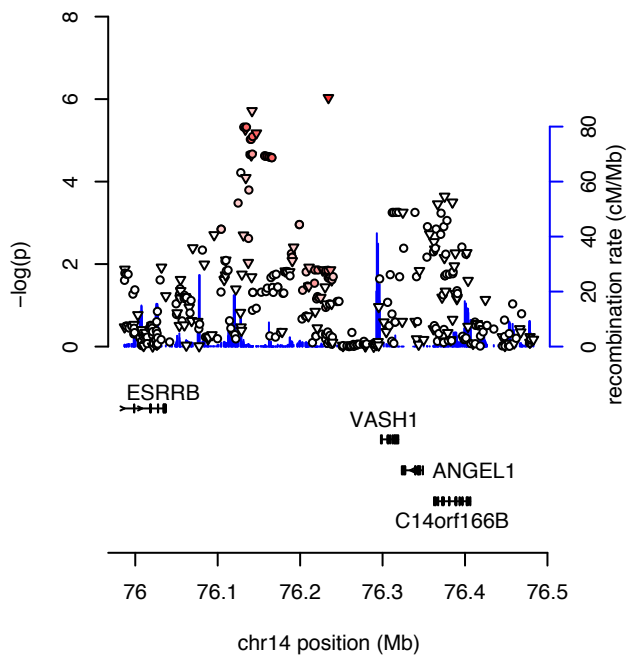
**ldlc\_corRatio\_SNPxAGE 17q22 rs8073909**



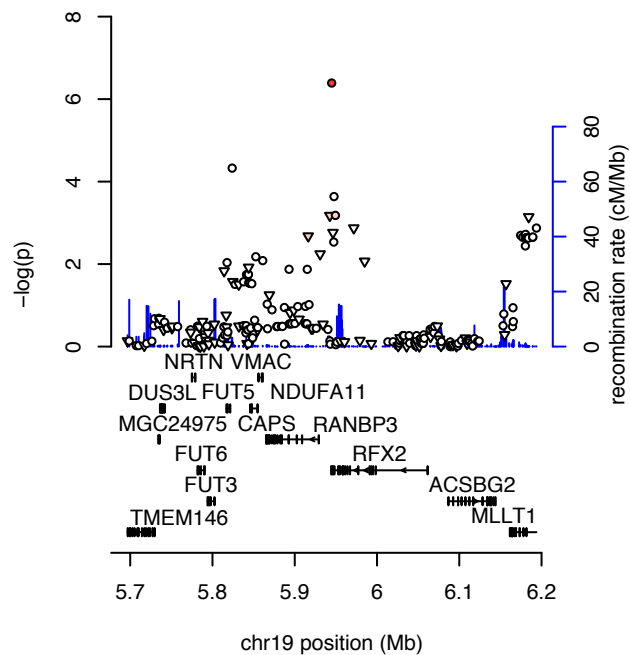
**ldlc\_corRatio\_SNPxAGE 10p13 rs11258628**



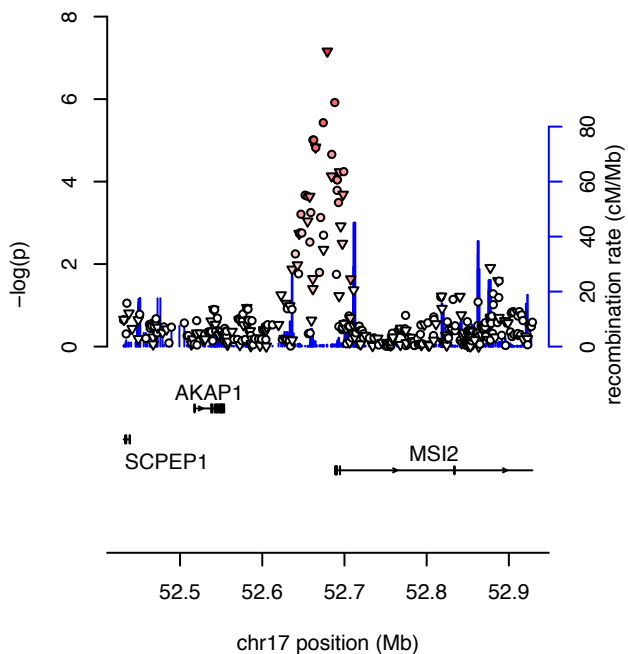
**sbp\_corExp\_SNPxAGE 14q24.3 rs17104804**



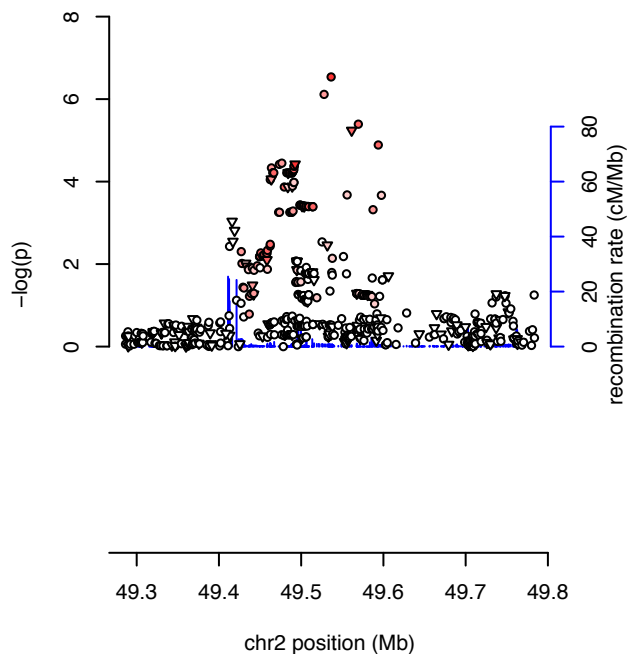
**sbp\_corExp\_SNPxAGE 19p13.3 rs1046391**



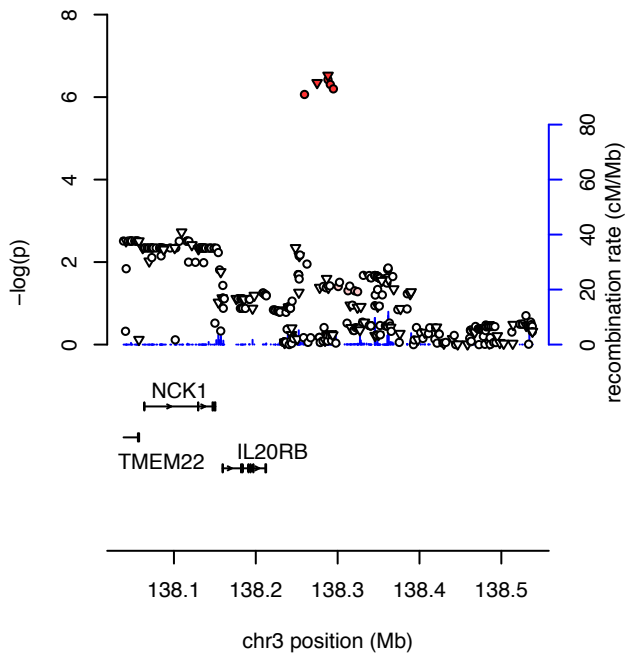
tc\_corRatio\_SNPxAGE 17q22 rs8073909



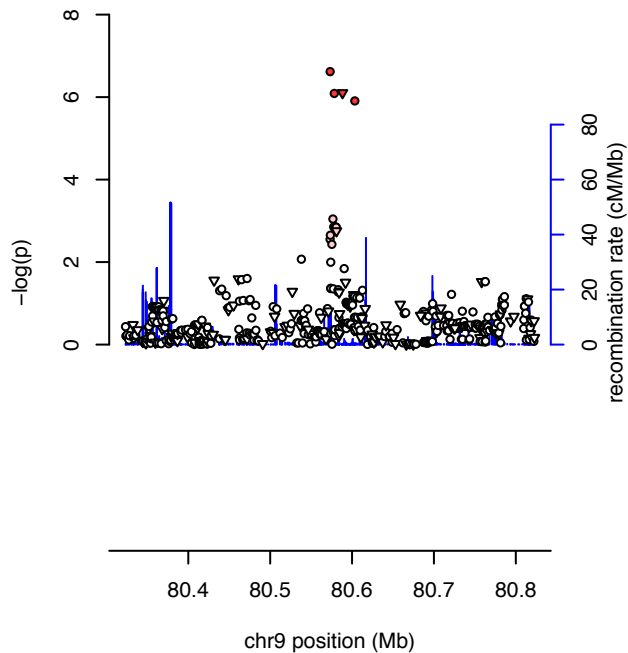
tg\_corRatio\_SNPxAGE 2p16.3 rs6726786



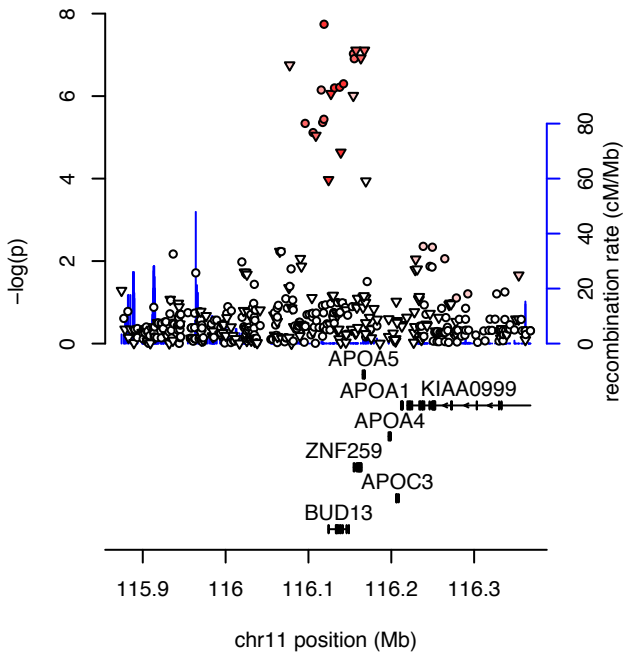
tg\_corRatio\_SNPxAGE 3q22.3 rs12330441



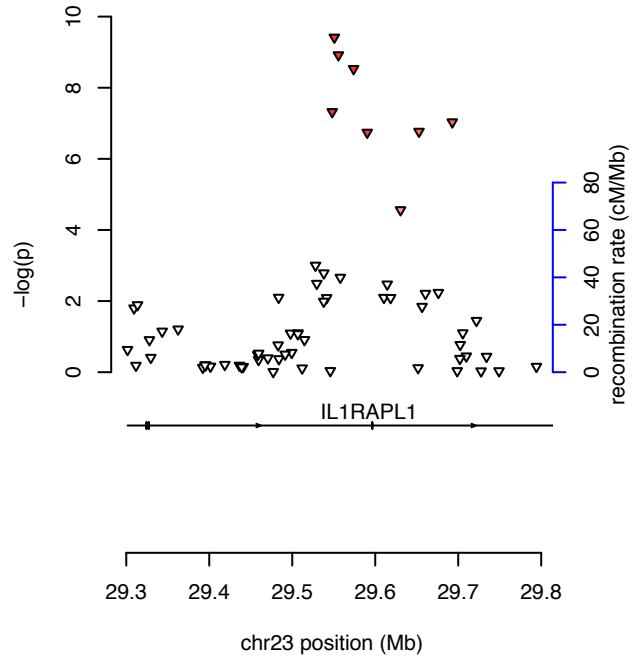
tg\_corRatio\_SNPxAGE 9q21.2 rs13290397



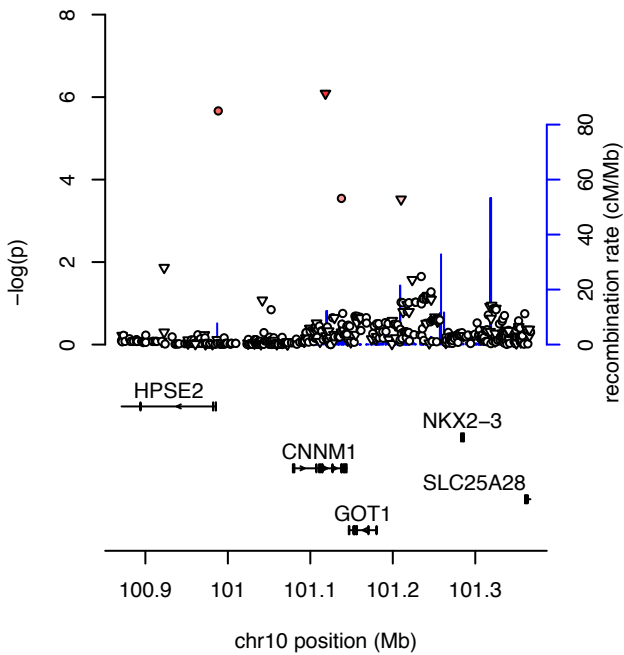
tg\_corRatio\_SNPxAGE 11q23.3 rs12280753



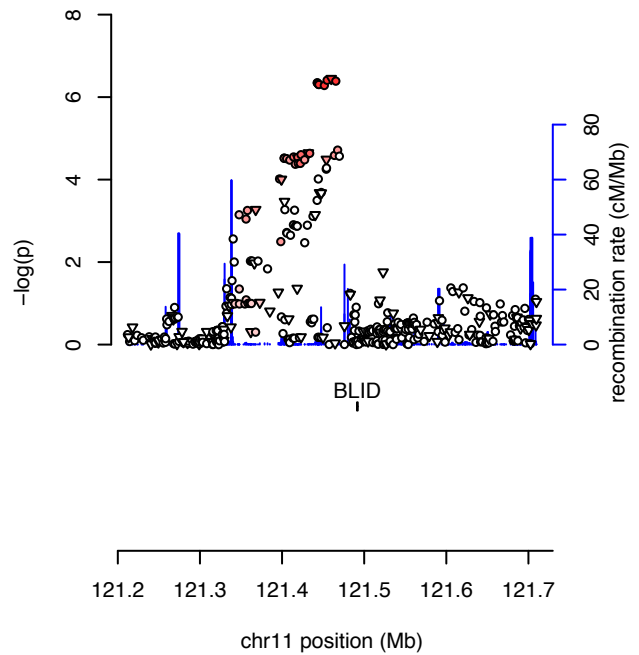
tg\_corRatio\_SNPxAGE Xp21.2 rs7890572



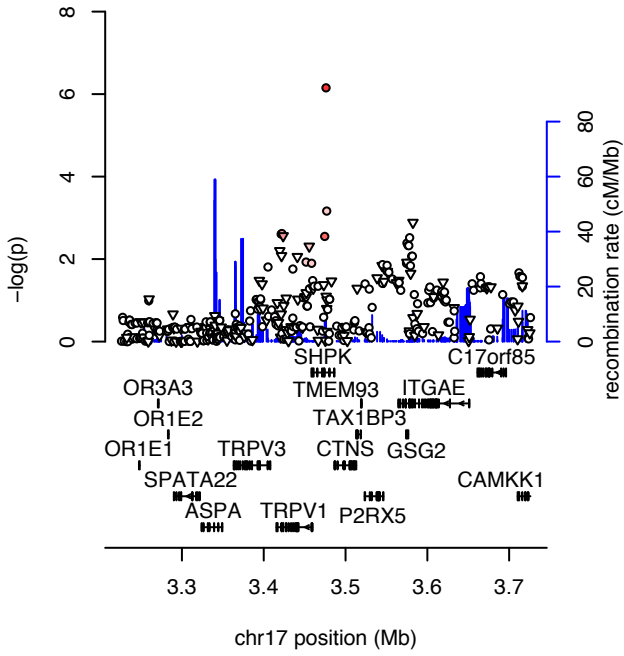
WAIST\_corRatio\_SNPxAGE 10q24.2 rs17568778



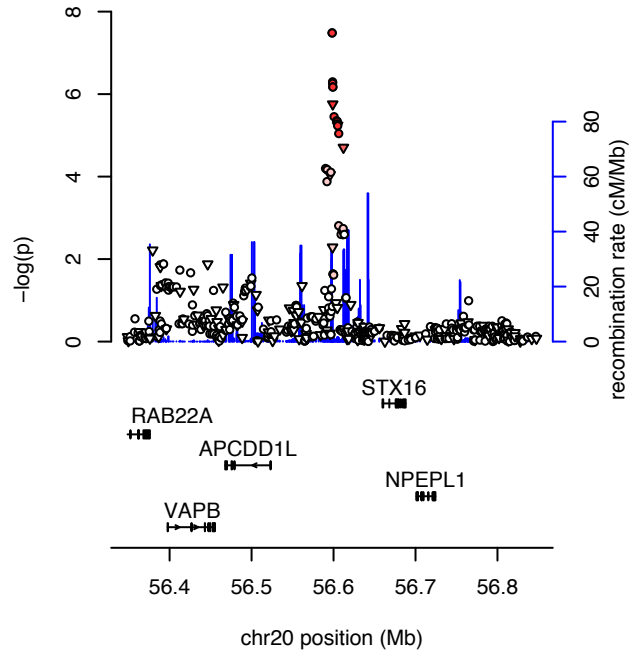
WAIST\_corRatio\_SNPxAGE 11q24.1 rs7121446



WAIST\_corRatio\_SNPxAGE 17p13.2 rs7210277



WAIST\_corRatio\_SNPxAGE 20q13.32 rs127430



WT\_corExp\_SNPxAGE 4q35.1 rs6552560

