

Supplemental material

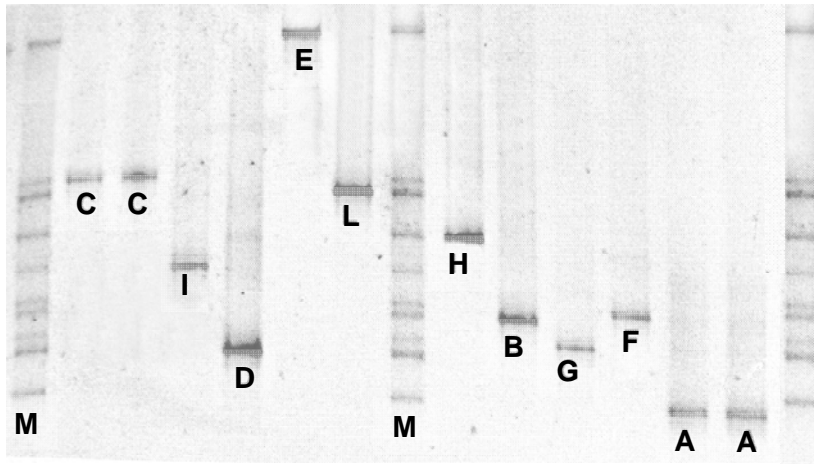


Fig. S1. DGGE migration patterns of *phlD* fragments obtained by amplification with Mir1a/Phl2b1GC primers for the *Pseudomonas* strains: **A.**CHA0, Pf-5 (*phlD*-genotype 9); **B.** Q2-87 (*phlD*-genotype 7); **C.** Q65c-80, CM1'A2 (*phlD*-genotype 5); **D.** F113 (not belonging to any of the defined 9 clusters); **E.** PITR2 (*phlD*-genotype 6); **F.** P97.38 (*phlD*-genotype 8); **G.** F96.27 (*phlD*-genotype 8); **H.** K94.37 (*phlD*-genotype 2); **I.** Q37.87 (*phlD*-genotype 4); **L.** P12 (*phlD*-genotype 1). Genotypes according to cluster analysis of *phlD* sequences by Frapolli *et al.*, (10). **M** = Marker obtained by the mix of all *Pseudomonas* strains.