

1 **Supplementary Table S1**

2 **Demographic characteristics of patients with HCV**

3  
4

**A. Patients receiving IFN therapy during the chronic phase**

Gender M/F	Age Median (Range)	HCV genotype			
		1a	1b	3a	ND
9/4	47 (34-61)	8	5		

**B. Patients receiving IFN therapy during the acute phase**

Gender M/F	Age Median (Range)	HCV genotype			
		1a	1b	3a	ND
9/1	33 (23-47)	4	1	5	

**C. Spontaneously resolved patients**

Gender M/F	Age Median (Range)	HCV genotype			
		1a	1b	3a	ND
8/2	36.5 (20-47)	1		2	7

5

ND: Not done

1 **Supplementary Table S2**

2 **MHC class I tetramers used in screening HCV-specific CD8+ T-cell responses in chronic**  
3 **patients prior to start of therapy**

4

<b>Restricting HLA Allele</b>	<b>HCV Protein</b>	<b>AA</b>	<b>Peptide sequence</b>
<b>A1</b>	NS3	1436-1444	ATDALMTGY
<b>A2</b>	Core	131-140	ADLMGYIPLV
	E2	614-622	RLWHYPCTV
	NS5B	2594-2603	ALYDVVTKL
	NS3	1073-1081	CINGVCWTV
	NS3	1406-1415	KLVALGINAV
	NS4b	1807-1816	LLFNILGGWV
<b>A3</b>	E2	630-639	RMYVGGVEHR
<b>B7</b>	Core	41-49	GPRLGVRAT
<b>B8</b>	NS3	1395-1403	HSKKKCDEL

5

6

7

8

9

10

11

12

13

14

15

16

1 **Supplementary Figure Legend**

2 **Figure S1. Representative flow cytometry for T-cell proliferation.** Proliferation was  
3 measured by CFSE dilution assay. PBMCs were stimulated with HCV peptide pools (C) or non-  
4 stimulated (B). Proliferating cells were gated on CD3+ CFSE+ viable cells then either  
5 CD4+ or CD8+ (A).

6  
7 **Figure S2. Representative flow cytometry for cytokine staining.** Degranulation was  
8 measured for CD8+ T cells by CD107a surface staining and cytokine production was measured  
9 for both CD4+ and CD8+ T cells by intracellular staining for IFN- $\gamma$  and IL-2. PBMCs were  
10 stimulated with HCV peptide pools (B, C bottom row) or non-stimulated (B, C top row). IFN-  
11  $\gamma$ +, IL2+ and CD107a+ cells were gated on CD3+ viable cells then either CD4+ or CD8+.

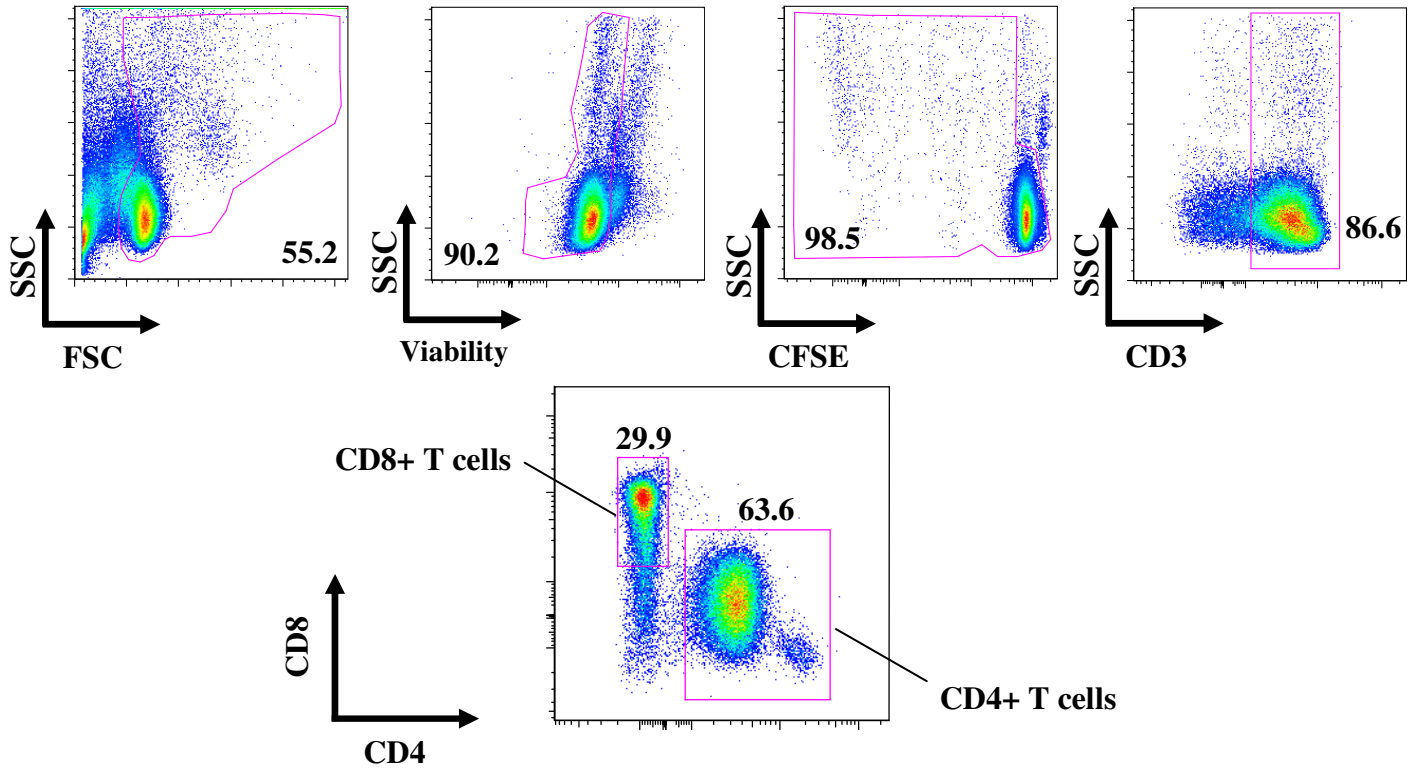
12  
13 **Figure S3. No restoration of immune responses against HCV in patients who resolved after**  
14 **receiving IFN- $\alpha$  therapy in the chronic phase (C-SVRs).**

15 Results are represented as the mean of C-SVR patients' responses (n=8) in an IFN- $\gamma$  ELISpot  
16 assay against the indicated HCV overlapping peptide pools. Each pool consisted of 39-50  
17 overlapping peptides representing the entire HCV polyprotein. Peptides are 18 AA long,  
18 overlapping by 11 AA (Biodefense and Emerging Infections Research Resources Repository  
19 (BEI resources)). No significant difference was observed in the responses between the different  
20 time points tested. The dashed line represents the positivity threshold (50 SFC/  $10^6$  PBMCs).

21

22

**A.**



**B. Non-Stimulated**

**C. HCV-peptide Stimulated**

