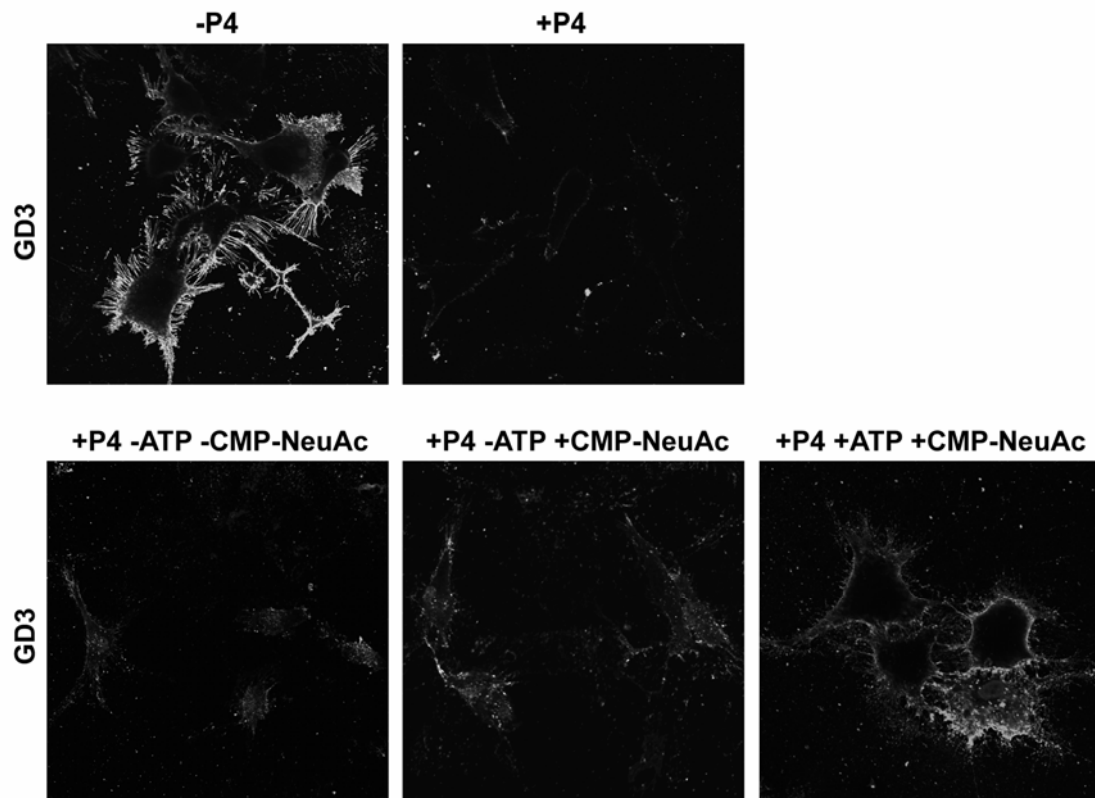


**FIGURE S2**



**Figure S2: ATP depletion reduces GD3 synthesis at the cell surface of SK-Mel 28 cells.** SK-Mel 28 cells were grown with P4 (+P4) or without P4 (-P4) for 4 days. Then, cells were fixed and processed for GD3 immunodetection (first row) or treated with 100  $\mu$ M GM3 for 3 h, washed and incubated for 1 h in PBS containing 5 mM  $\text{NaN}_3$  and 50 mM 2-deoxy-d-glucose (-ATP), or complete DMEM (+ATP) (second row). Finally, cells were incubated for 2 h at 37°C in a medium containing P4,  $\text{Mn}^{+2}$ , and  $\text{Mg}^{+2}$ , both in the presence (+CMP-NeuAc, 2<sup>nd</sup> and 3<sup>rd</sup> panels) or in the absence of CMP-NeuAc (-CMP-NeuAc, 1<sup>st</sup> panel). Then, cells were washed and immunostained with R24 antibody to GD3. Single confocal sections were taken every 0.7  $\mu$ m parallel to the coverslip.