

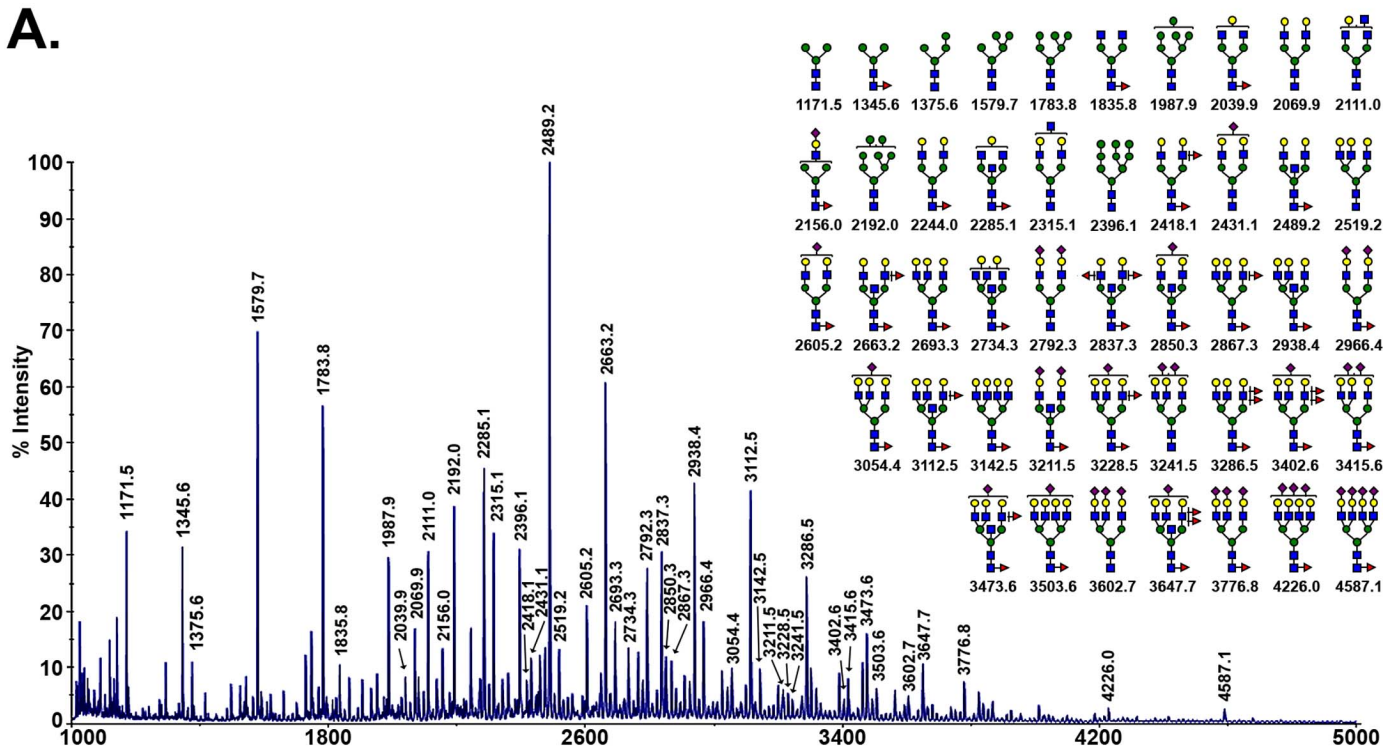
West *et al.* Supplemental Figures

Supplemental Figure 1. MALDI-TOF-MS glycomic profile of permethylated N-glycans derived by PNGase F digestion of a soluble detergent extract of membranes isolated from either the cortex of human kidney #1 (A) or human kidney #2 (B). Symbols: ■, *N*-acetylglucosamine; ●, mannose; ●, galactose; ●, hexose (galactose or mannose); ▲, fucose; ◆, *N*-acetylneuraminic acid. A third human kidney was also analyzed in this manner and exhibited the same N-glycomic profile observed in (A) and (B).

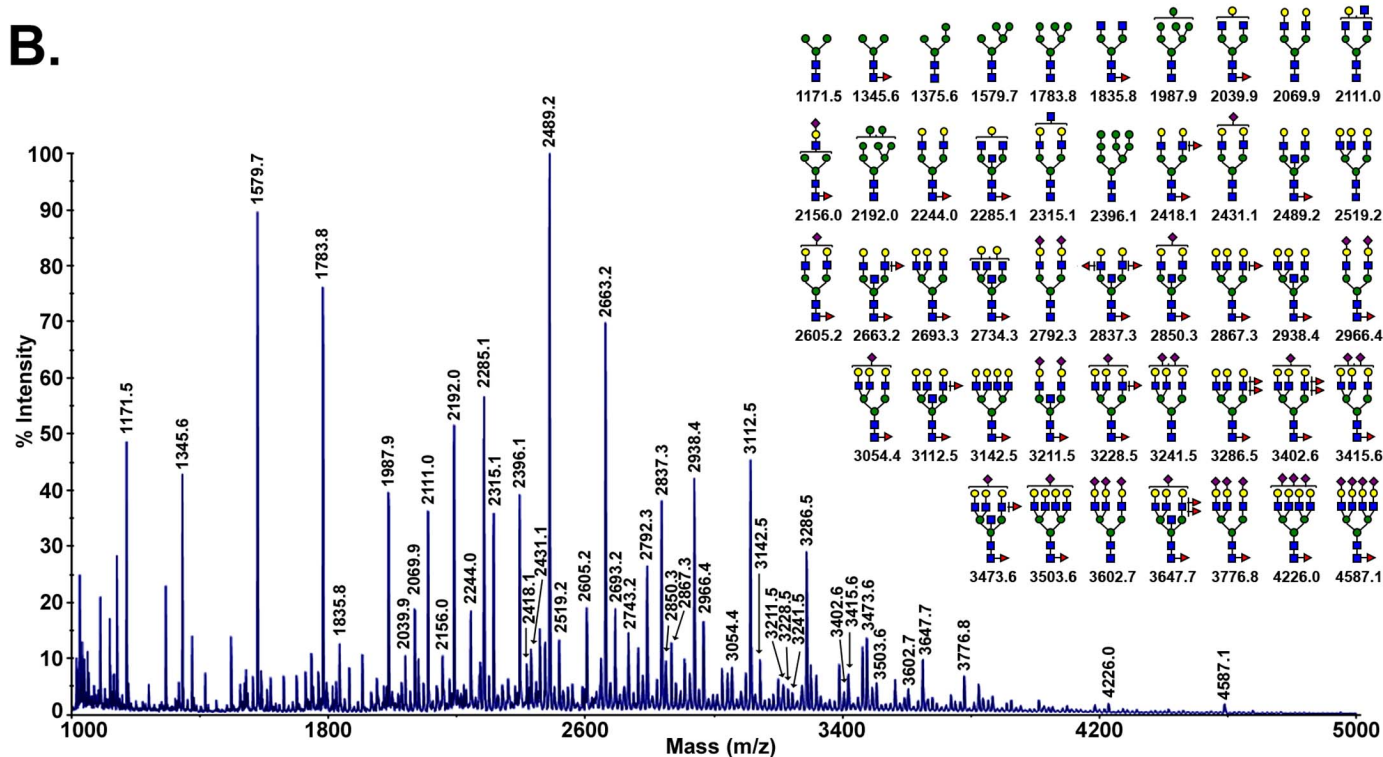
Supplemental Figure 2. MALDI-TOF-MS glycomic profile of permethylated N-glycans derived by PNGase F digestion of a soluble detergent extract of membranes isolated from either human liver #1 (A) or human liver #2 (B). Symbols: See Supplementary Figure 1.

Supplemental Figure 1

A.



B.



Supplemental Figure 2

