

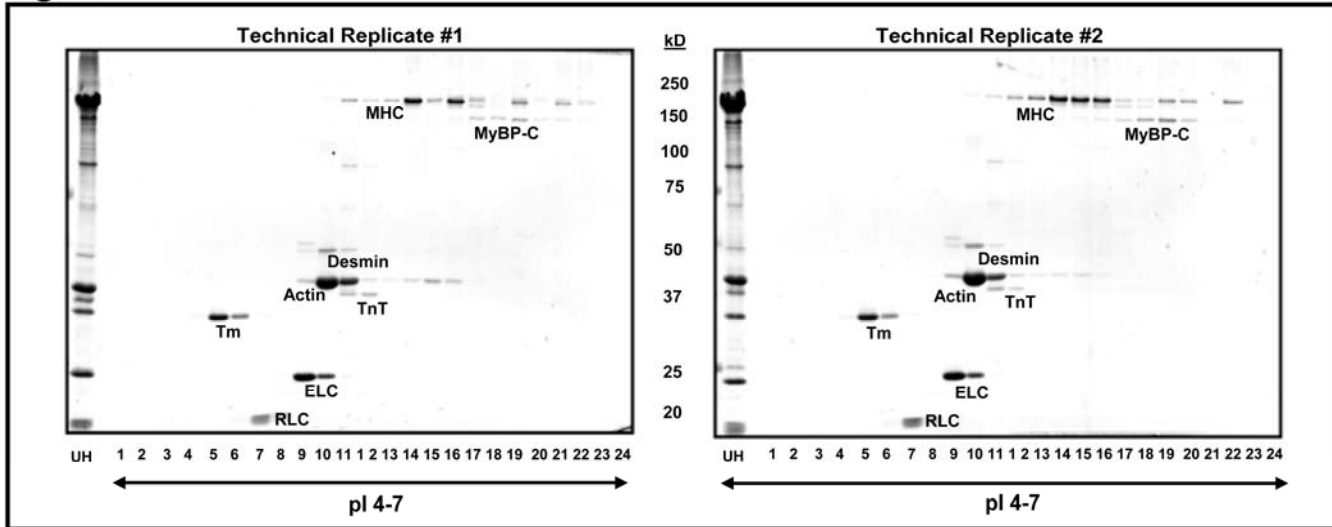
Figure S1

Figure S1: Technical replicates of OGE demonstrating the reproducibility of separation. Myofibrils extracted from the same mouse heart (4.0 mg) were divided into 2 samples (2 mg each), and technical replicate runs were performed using OGE over a narrow pH range 4-7, 24 cm separating distance. OGE fractions (2 μ l) were run on 12% SDS-PAGE gels and stained with Coomassie G250.