

Legend to Supplemental Figures

Figure 1. Confocal projections (x10; 1 μ m optical sections) of single immunofluorescence images of hemi-sections taken at the level of the arcuate nucleus from the same full coronal section of monkey MBH immunostained for NKB with the unadsorbed primary antibody, IS681 (*left panel*), or the same primary antibody preadsorbed with the immunogen (haptene-glutaraldehyde-carrier) (*right panel*), both as a cocktail with GQ2, the primary antibody for kisspeptin (not shown). *Scale bar*, 100 μ m.

Figure 2. Confocal projections (x10; 1 μ m optical sections) of dual immunofluorescence images of hemi-sections taken at the level of the arcuate nucleus from the same full coronal section of monkey MBH immunostained for GnRH (*green*) and NKB (*red*), respectively, with unadsorbed primary antibodies HU4H and IS681 (*left panel*), or the same primary antibody cocktail in which HU4H was preadsorbed with the synthetic decapeptide (*right panel*). *Scale bar*, 100 μ m.

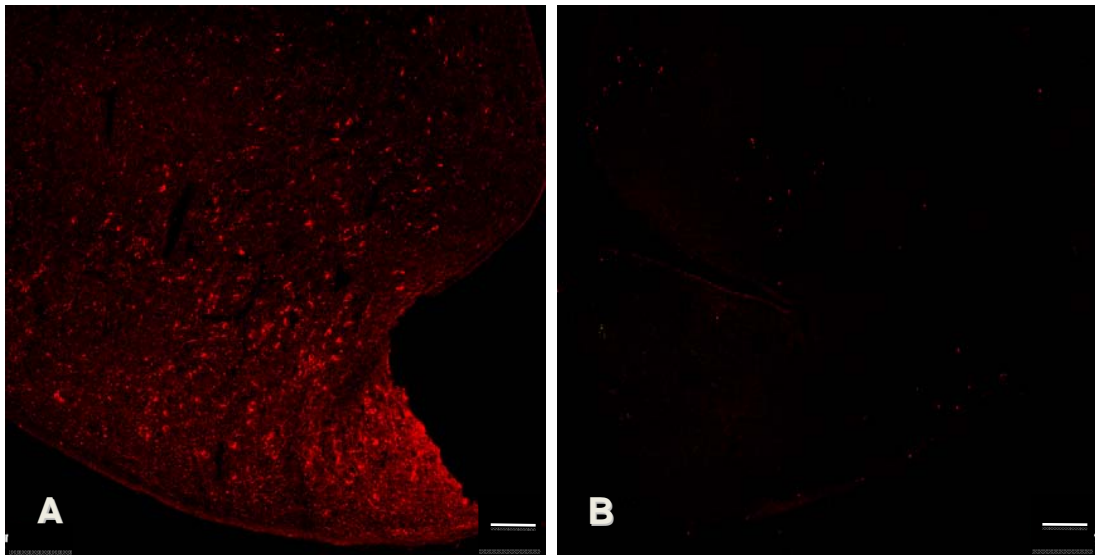


Figure 1

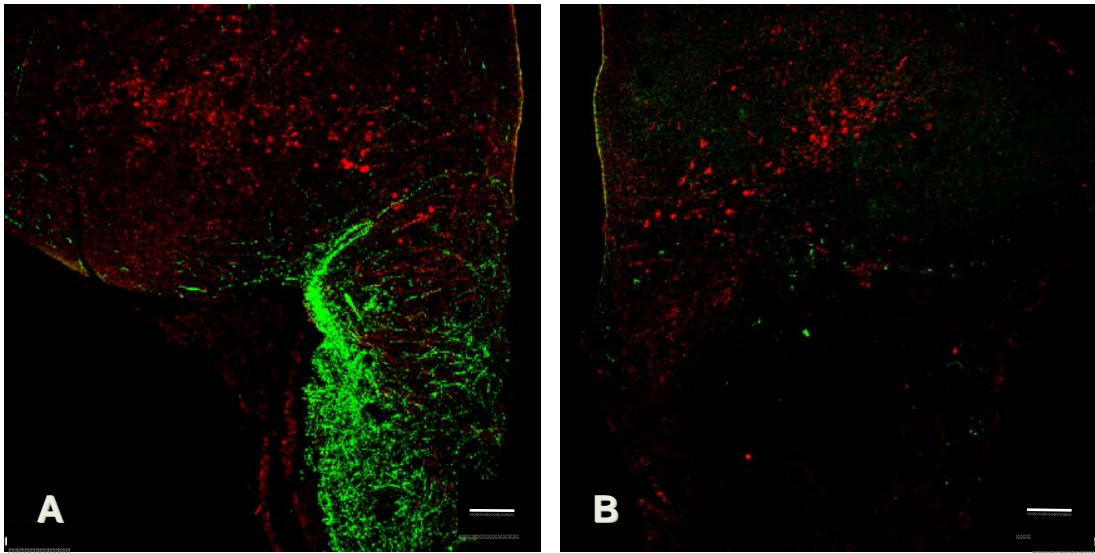


Figure 2