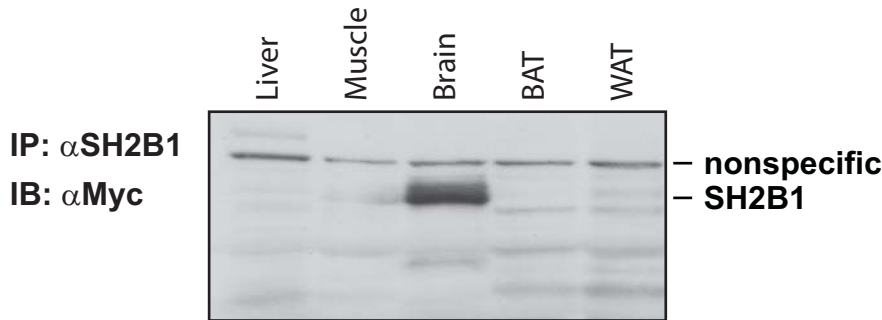


Supplemental Figure Legends

Fig. 1. Recombinant SH2B1 and R555E are specifically expressed in neurons in SH2B1 and R555E transgenic mice. (A) Tissue extracts were prepared from a SH2B1 transgenic male (2 month), immunoprecipitated with α SH2B1 and immunoblotted with α Myc. WAT: white adipose tissue; BAT: brown adipose tissue. (B) Tissue extracts were prepared from a KO/R555E male, immunoprecipitated with α SH2B1, and immunoblotted with α SH2B1.

Fig. 2. Neuron-specific expression of the SH2 domain alone does not alter body weight or glucose metabolism in WT mice. (A) Growth curves for WT and Δ N503 male littermates. (B) Whole body fat content in WT and Δ N503 male mice (15-17 weeks of age). (C) Fasting (16 h) blood glucose in WT and Δ N503 male mice (17-18 weeks of age). (D) Glucose tolerance tests (GTT) performed on WT and Δ N503 male mice (18-19 weeks of age; 2 g/kg body weight). (E) Insulin tolerance tests (ITT) in male mice (18-19 weeks of age; 1 U/kg body weight). The number in parenthesis indicates the number of mice per group.

A SH2B1 Transgenic Mice



B KO/R555E Mice

